

10 9 8 7 6 5 4 3 2 1

F

E

D

C

B

A

F

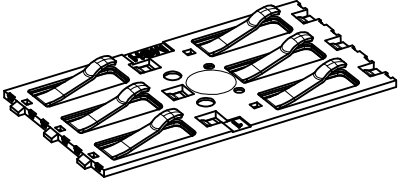
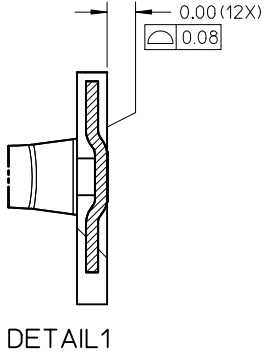
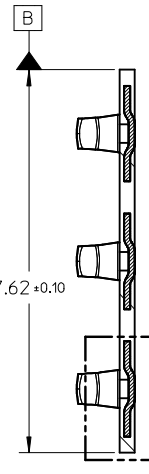
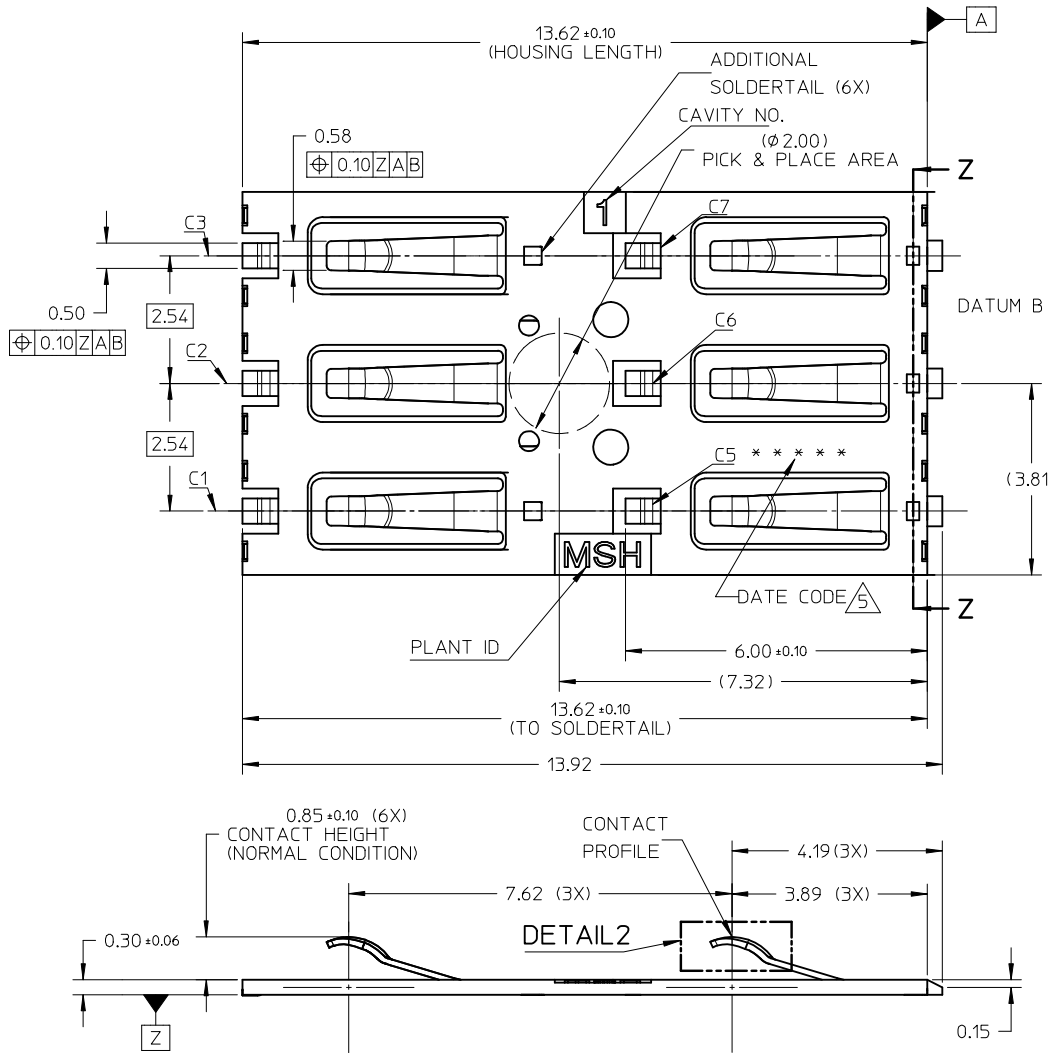
E

D

C

B

A

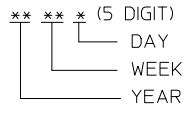


NOTE:

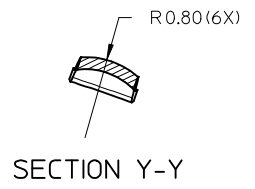
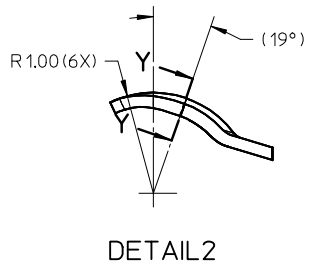
1. MATERIAL: HOUSING : LCP, GLASS FILLED, UL94-V0, COLOR: BLACK  
TERMINAL : COPPER ALLOY
2. FINISH: TERMINAL: SEE TABLE

CONTACT AREA	SOLDER TAIL AREA	OTHERS AREA
GOLD (0.38μm MIN)	GOLD FLASH (0.05μm MIN)	NICKEL PLATING
OVER NICKEL UNDERPLATE (2.00μm MIN)		

3. PRODUCT SPECIFICATION: PS-78545-003
4. PACKAGING SPECIFICATION: PK-78545-001
5. DATE CODE:



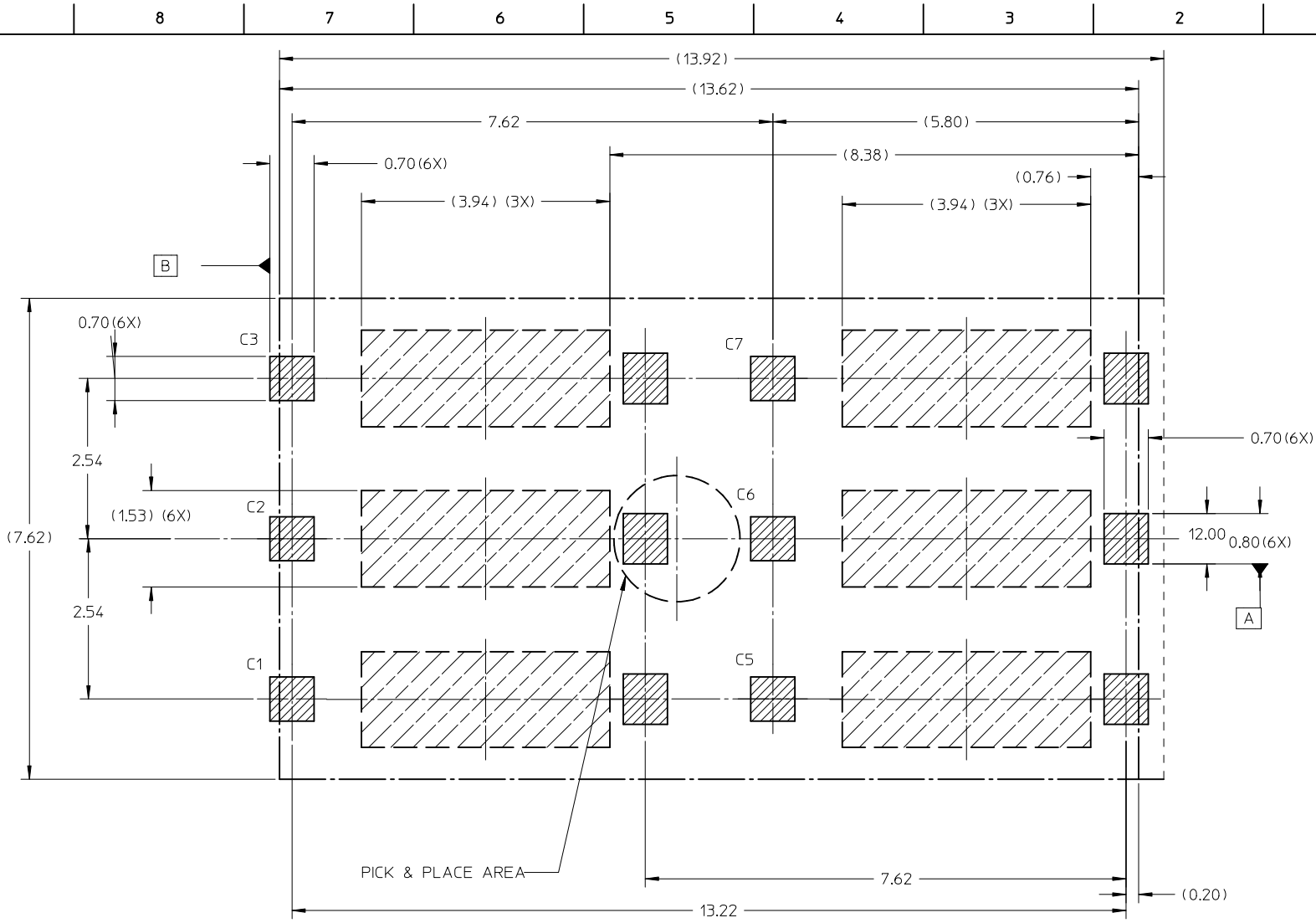
6. COMPLIANT TO RoHS DIRECTIVE 2002/95/EC AND ELV DIRECTIVE 2000/53/EC



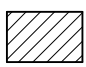
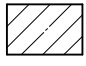

NEW PRODUCT EC NO: SZ013-0374 DRWN: JZENG 2012/11/26 CHKD: JTAN02 2012/12/20 APPR: KHLIM 2013/01/04	QUALITY SYMBOLS	GENERAL TOLERANCES (UNLESS SPECIFIED)	DIMENSION STYLE	SCALE	DESIGN UNITS	THIRD ANGLE PROJECTION
	▽=0	mm INCH	MM ONLY	10:1	METRIC	
	▽=0	4 PLACES ± --- ± ---	DRAWN BY DATE	TITLE		
	▽=0	3 PLACES ± --- ± ---	CHECKED BY DATE	SIM CARD CONNECTOR BLOCK SIM CONNECTOR 0.3MM MEIGHT		
	2 PLACES ± 0.15 ± ---	APPROVED BY DATE	molex			
	1 PLACE ± --- ± ---	MATERIAL NO. DOCUMENT NO.	78545-1010 SD-78545-004			
	0 PLACE ± --- ± ---	ANGULAR ± 3°	SHEET NO.			
	DRAFT WHERE APPLICABLE MUST REMAIN WITHIN DIMENSIONS		1 OF 2			


SIZE	THIS DRAWING CONTAINS INFORMATION THAT IS PROPRIETARY TO MOLEX INCORPORATED AND SHOULD NOT BE USED WITHOUT WRITTEN PERMISSION	
A3		

9 8 7 6 5 4 3 2 1



RECOMMENDED PCB LAYOUT  
PCB TOLERANCE: ±0.05mm

-  SOLDERING AREA
-  NO WIRING AREA
-  CONNECTOR BOUNDARY

<b>NEW PRODUCT</b> EC NO: SZ013-0374 DRWN: JZENG 2012/11/26 CHKD: JTAN02 2012/12/20 APPR: KHLIM 2013/01/04	QUALITY SYMBOLS $\nabla_F = 0$ $\nabla_E = 0$ $\nabla_D = 0$	GENERAL TOLERANCES (UNLESS SPECIFIED)		DIMENSION STYLE	SCALE	DESIGN UNITS	THIRD ANGLE PROJECTION		
			mm	INCH	MM ONLY	10:1	METRIC		
		4 PLACES	± ---	± ---	DRAWN BY	DATE	TITLE		
		3 PLACES	± ---	± ---	JZENG	2012/11/26	SIM CARD CONNECTOR BLOCK SIM CONNECTOR 0.3MM MEIGHT		
2 PLACES	± 0.15	± ---	CHECKED BY	DATE					
1 PLACE	± ---	± ---	JTAN02	2012/12/20					
0 PLACE	± ---	± ---	APPROVED BY	DATE	DOCUMENT NO.				
			KHLIM	2013/01/04	SD-78545-004				
			MATERIAL NO.		SHEET NO.				
			78545-1010		2 OF 2				
DRAFT WHERE APPLICABLE MUST REMAIN WITHIN DIMENSIONS				SIZE	THIS DRAWING CONTAINS INFORMATION THAT IS PROPRIETARY TO MOLEX INCORPORATED AND SHOULD NOT BE USED WITHOUT WRITTEN PERMISSION				
				A3					

10 9 8 7 6 5 4 3 2 1

F

E

D

C

B

A

F

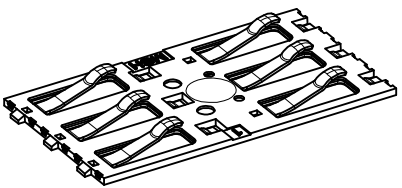
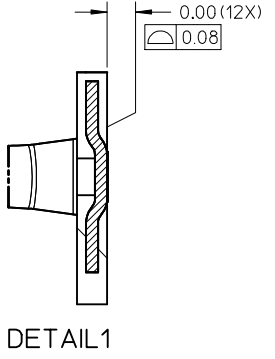
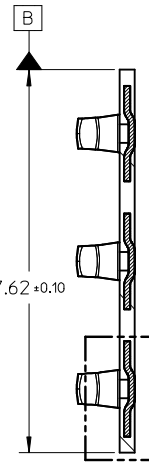
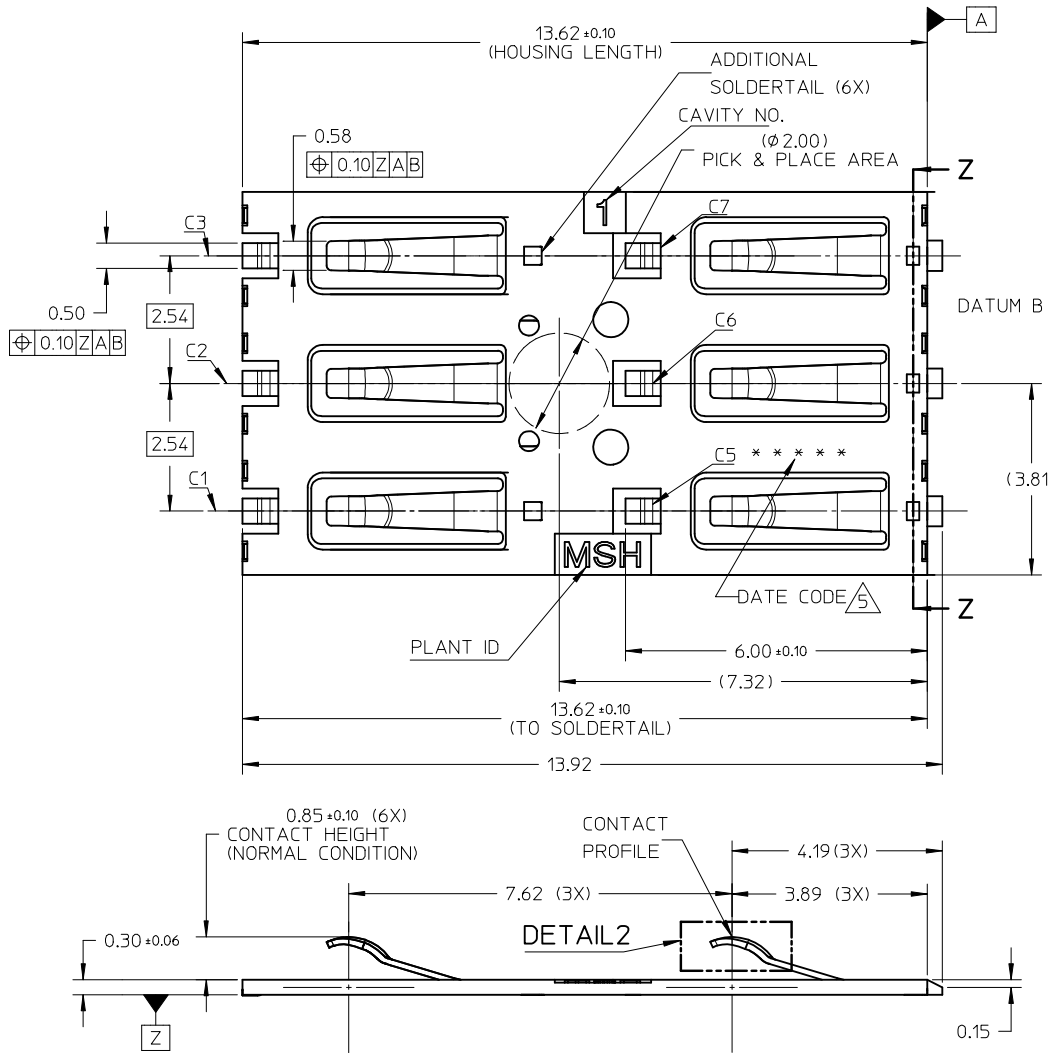
E

D

C

B

A

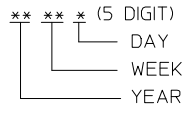


NOTE:

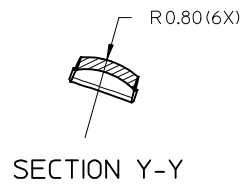
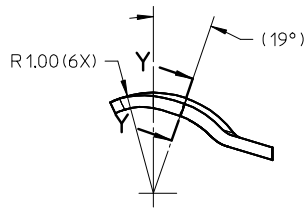
1. MATERIAL: HOUSING : LCP, GLASS FILLED, UL94-V0, COLOR: BLACK  
TERMINAL : COPPER ALLOY
2. FINISH: TERMINAL: SEE TABLE

CONTACT AREA	SOLDERTAIL AREA	OTHERS AREA
GOLD (0.38 $\mu$ m MIN)	GOLD FLASH (0.05 $\mu$ m MIN)	NICKEL PLATING
OVER NICKEL UNDERPLATE (2.00 $\mu$ m MIN)		

3. PRODUCT SPECIFICATION: PS-78545-003
4. PACKAGING SPECIFICATION: PK-78545-001
5. DATE CODE:



6. COMPLIANT TO RoHS DIRECTIVE 2002/95/EC AND ELV DIRECTIVE 2000/53/EC



NEW PRODUCT  
EC NO: SZ013-0374  
DRWN: JZENG 2012/11/26  
CHKD: JTAN02 2012/12/20  
APPR: KHLIM 2013/01/04

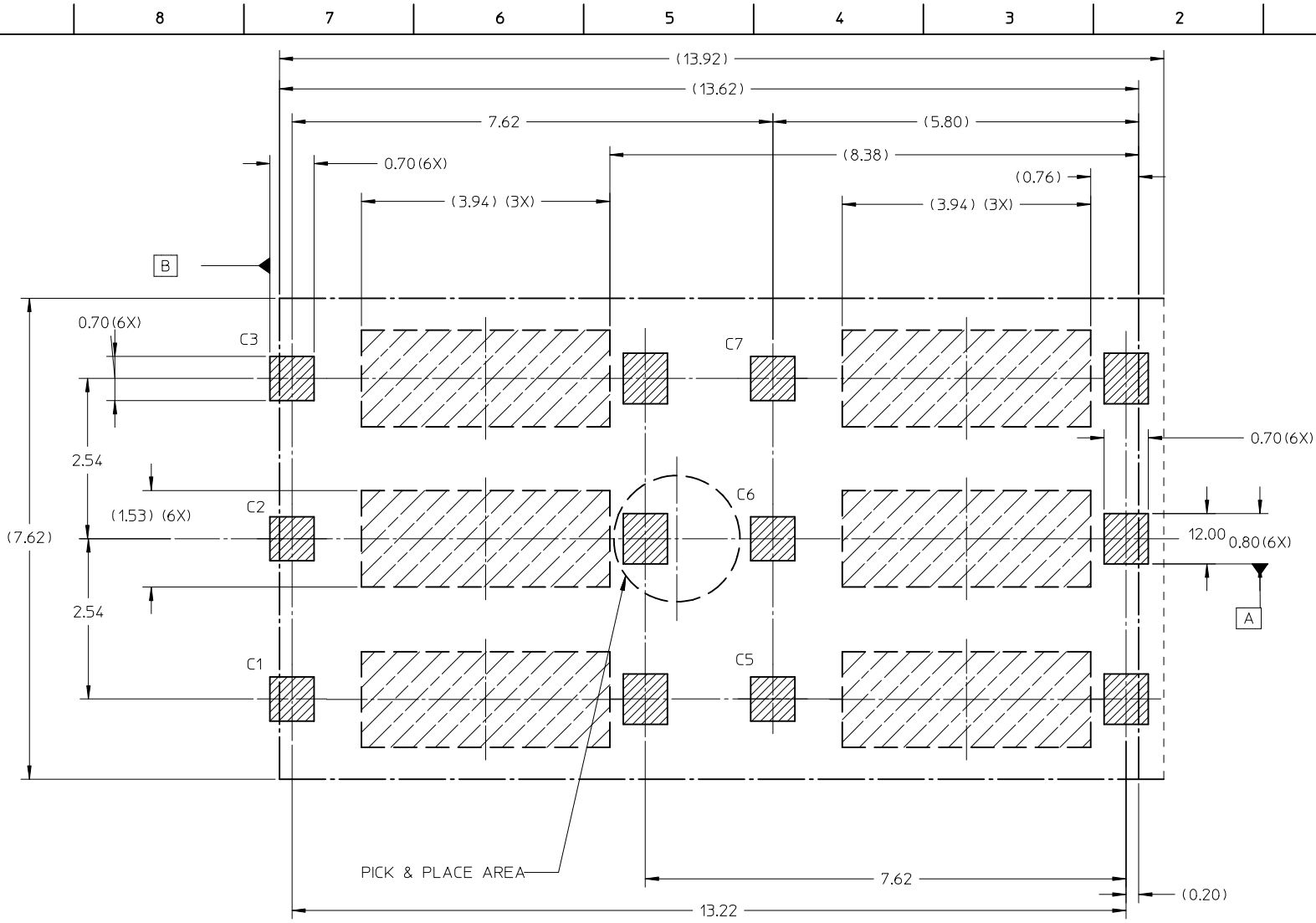
QUALITY SYMBOLS  
 $\nabla$ F=0  
 $\nabla$ F=0  
 $\nabla$ F=0

	GENERAL TOLERANCES (UNLESS SPECIFIED)	
	mm	INCH
4 PLACES	$\pm$ ---	$\pm$ ---
3 PLACES	$\pm$ ---	$\pm$ ---
2 PLACES	$\pm$ 0.15	$\pm$ ---
1 PLACE	$\pm$ ---	$\pm$ ---
0 PLACE	$\pm$ ---	$\pm$ ---
ANGULAR $\pm$ 3°		
DRAFT WHERE APPLICABLE MUST REMAIN WITHIN DIMENSIONS		

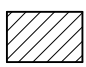
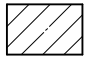

DIMENSION STYLE		SCALE	DESIGN UNITS	THIRD ANGLE PROJECTION
MM ONLY		10:1	METRIC	
DRAWN BY	DATE	TITLE		
JZENG	2012/11/26	SIM CARD CONNECTOR		
CHECKED BY	DATE	BLOCK SIM CONNECTOR		
JTAN02	2012/12/20	0.3MM MEIGHT		
APPROVED BY	DATE	<b>molex</b>		
KHLIM	2013/01/04			
MATERIAL NO.	DOCUMENT NO.	SHEET NO.		
78545-1010	SD-78545-004	1 OF 2		

9 8 7 6 5 4 3 2 1

THIS DRAWING CONTAINS INFORMATION THAT IS PROPRIETARY TO MOLEX INCORPORATED AND SHOULD NOT BE USED WITHOUT WRITTEN PERMISSION

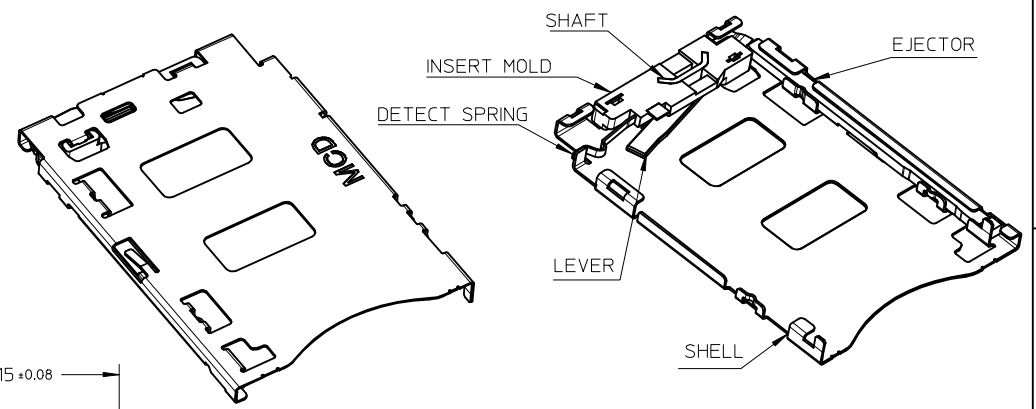
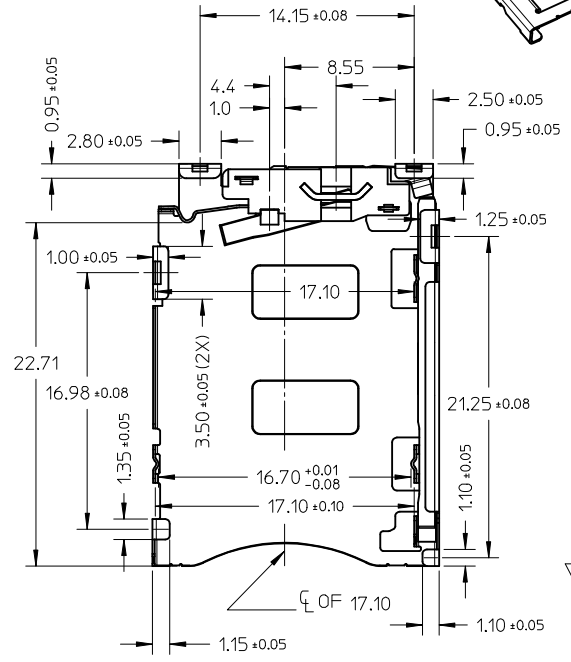
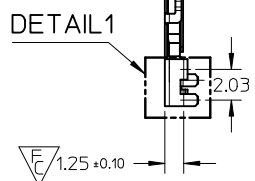
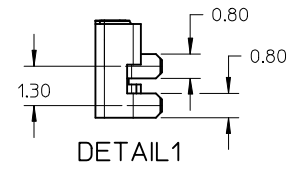
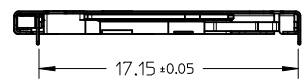
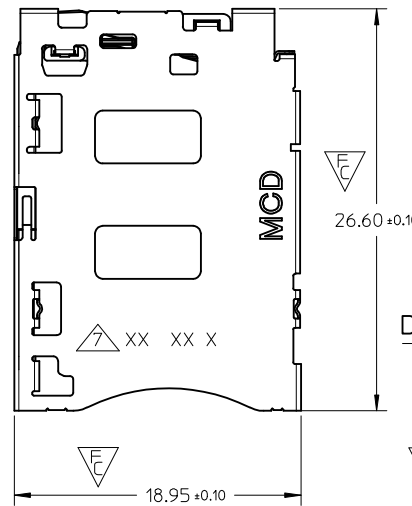
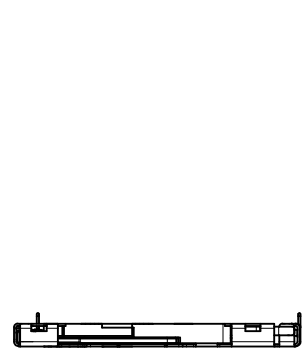


RECOMMENDED PCB LAYOUT  
PCB TOLERANCE: ±0.05mm

-  SOLDERING AREA
-  NO WIRING AREA
-  CONNECTOR BOUNDARY

<b>NEW PRODUCT</b> EC NO: SZ013-0374 DRWN: JZENG 2012/11/26 CHKD: JTAN02 2012/12/20 APPR: KHLIM 2013/01/04	QUALITY SYMBOLS $\nabla_F = 0$ $\nabla_E = 0$ $\nabla_D = 0$	GENERAL TOLERANCES (UNLESS SPECIFIED)		DIMENSION STYLE	SCALE	DESIGN UNITS	THIRD ANGLE PROJECTION		
			mm	INCH	MM ONLY	10:1	METRIC		
		4 PLACES	±---	±---	DRAWN BY	DATE	TITLE		
		3 PLACES	±---	±---	JZENG	2012/11/26	SIM CARD CONNECTOR BLOCK SIM CONNECTOR 0.3MM MEIGHT		
	2 PLACES	±0.15	±---	CHECKED BY	DATE				
	1 PLACE	±---	±---	JTAN02	2012/12/20				
	0 PLACE	±---	±---	APPROVED BY	DATE				
		±---	±---	KHLIM	2013/01/04				
		ANGULAR ± 3°		MATERIAL NO.	DOCUMENT NO.				
		DRAFT WHERE APPLICABLE MUST REMAIN WITHIN DIMENSIONS		78545-1010	SD-78545-004	SHEET NO. 2 OF 2			
				SIZE A3	THIS DRAWING CONTAINS INFORMATION THAT IS PROPRIETARY TO MOLEX INCORPORATED AND SHOULD NOT BE USED WITHOUT WRITTEN PERMISSION				

10 9 8 7 6 5 4 3 2 1



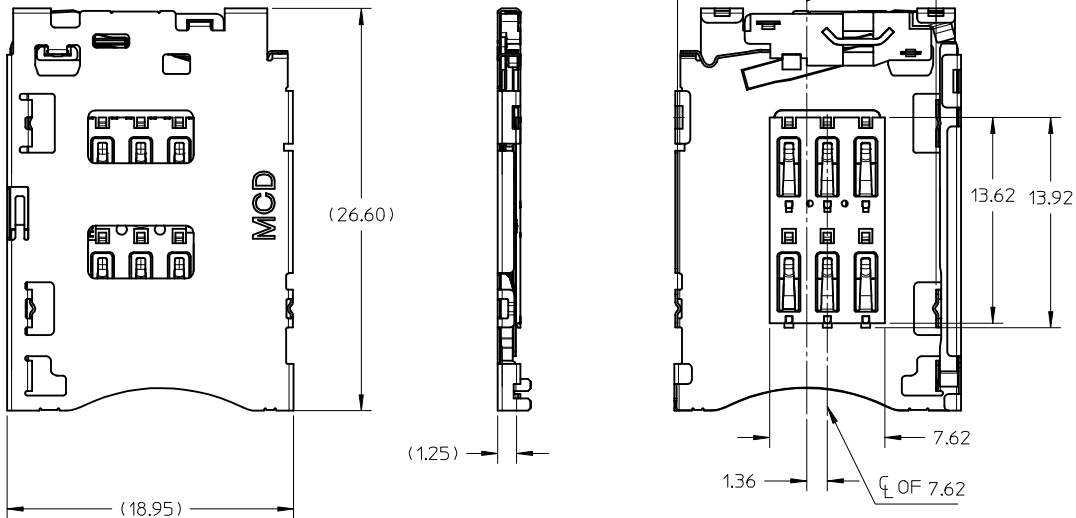
NOTES:  
 1. MATERIALS:  
 INSERT MOLD HOUSING: LCP, UL94V-0;  
 LEVER, SHAFT, EJECTOR, SHELL: STAINLESS STEEL;  
 DETECT SPRING: COPPER ALLOY;  
 2. FINISHES:  
 DETECT SPRING:  
 1.27um MIN. NICKEL UNDERPLATING OVERALL;  
 0.127um MIN. GOLD PLATING ON CONTACT AREA;  
 1.27 um MIN. TIN PLATING ON SOLDERING TAIL;  
 SHELL:  
 1.27um MIN NICKEL UNDERPLATING OVERALL;  
 0.025um MIN GOLD PLATING ON CONTACT AREA AND SOLDERING AREA;  
 SHAFT: 1.27um MIN TIN ON SOLDERING TAIL;  
 3. PRODUCT SPECIFICATION: PS-78799-001;  
 4. PACKAGING SPECIFICATION: PK-78799-001;  
 5. SOLDER TAIL COPLANARITY: 0.08 MM MAX;  
 6. THIS PART IS A FRAME ONLY, IT SHOULD BE USED TOGETHER WITH  
 0.3MM BLOCK SIM 78545 FOR AN ENTIRE SIM POP OUT SYSTEM;  
 DATE CODE PRINTED: XX XX X  
 DAY  
 WEEK  
 YEAR

UPDATED DRAWING EC NO: S2014-0574 DRWN: JZENG 2013/10/17 CHKD: JTAN02 2014/01/13 APPR: KHL IM 2014/01/18	QUALITY SYMBOLS	GENERAL TOLERANCES (UNLESS SPECIFIED)	DIMENSION STYLE	SCALE	DESIGN UNITS	THIRD ANGLE PROJECTION
	$\nabla_A = 0$ $\nabla_C = 4$ $\nabla_P = 0$	mm INCH 4 PLACES ± --- ± --- 3 PLACES ± --- ± --- 2 PLACES ± 0.2 ± --- 1 PLACE ± 0.2 ± --- 0 PLACE ± --- ± ---	MM ONLY	NTS	METRIC	
	DESCRIPTION	ANGULAR ± 3 °	DRAWN BY	DATE	TITLE	
	DRAFT WHERE APPLICABLE MUST REMAIN WITHIN DIMENSIONS		JZENG	2012/11/12	POP OUT SIM FRAME SIM CONNECTOR 1.50H	
REV			CHECKED BY	DATE		
11			JTAN02	2012/12/31		
			APPROVED BY	DATE		
			KHL IM	2013/01/04		
			MATERIAL NO.	DOCUMENT NO.		
			787990001	SD-78799-001		
			SIZE	THIS DRAWING CONTAINS INFORMATION THAT IS PROPRIETARY TO MOLEX INCORPORATED AND SHOULD NOT BE USED WITHOUT WRITTEN PERMISSION		
			A3			
						SHEET NO. 1 OF 3

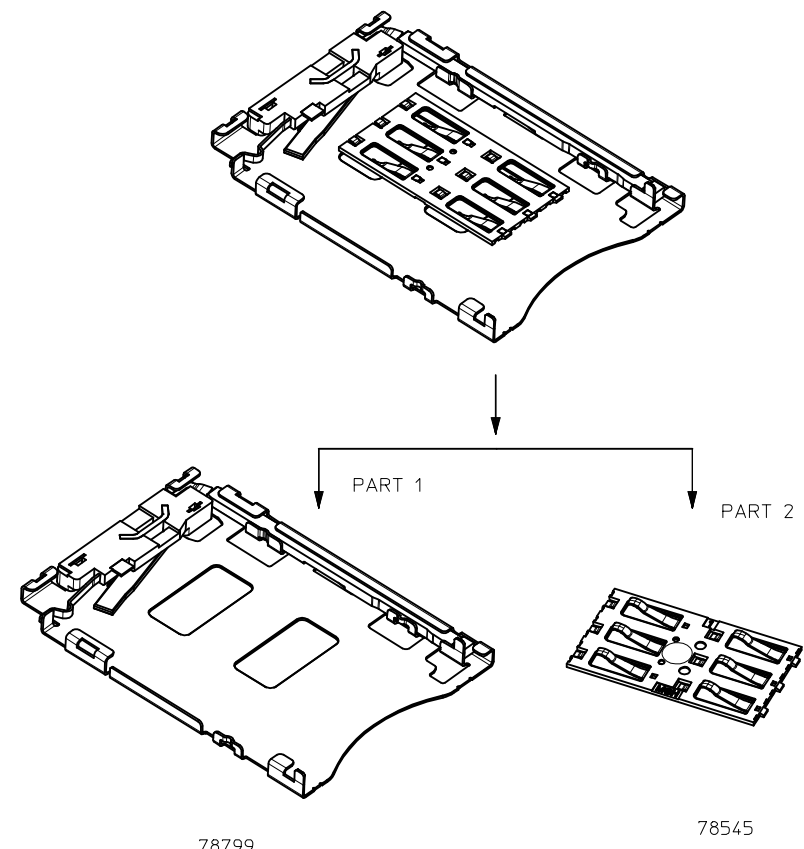
9 8 7 6 5 4 3 2 1

10 9 8 7 6 5 4 3 2 1

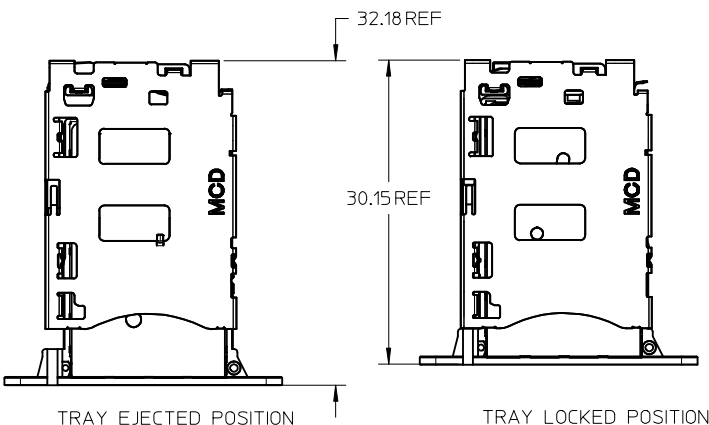
SIM CONNECTOR  
(WITH BLOCK SIM CONNECTOR)



SIM CONNECTOR BOM



SIM CONNECTOR FRAME AND TRAY



SEE SHEET 1 EC NO: S2014-0574 DRWN: JZENG CHKD: JTAN02 APPR: KHL IM 11	DESCRIPTION 2013/10/17 2014/01/13 2014/01/18	QUALITY SYMBOLS	GENERAL TOLERANCES (UNLESS SPECIFIED)	DIMENSION STYLE	SCALE	DESIGN UNITS	THIRD ANGLE PROJECTION
		$F_A = 0$ $F_G = 0$ $F_P = 0$	mm INCH 4 PLACES ± --- ± --- 3 PLACES ± --- ± --- 2 PLACES ± 0.2 ± --- 1 PLACE ± 0.2 ± --- 0 PLACE ± --- ± --- ANGULAR ± 3 °	MM ONLY	NTS	METRIC	
			DRAFT WHERE APPLICABLE MUST REMAIN WITHIN DIMENSIONS	DRAWN BY	DATE	TITLE	
				CHECKED BY	DATE		
				APPROVED BY	DATE		
				KHL IM	2013/01/04		
				MATERIAL NO.	DOCUMENT NO.		
				787990001	SD-78799-001		
				SIZE	THIS DRAWING CONTAINS INFORMATION THAT IS PROPRIETARY TO MOLEX INCORPORATED AND SHOULD NOT BE USED WITHOUT WRITTEN PERMISSION		
				A3			



POP OUT SIM FRAME  
SIM CONNECTOR  
1.50H

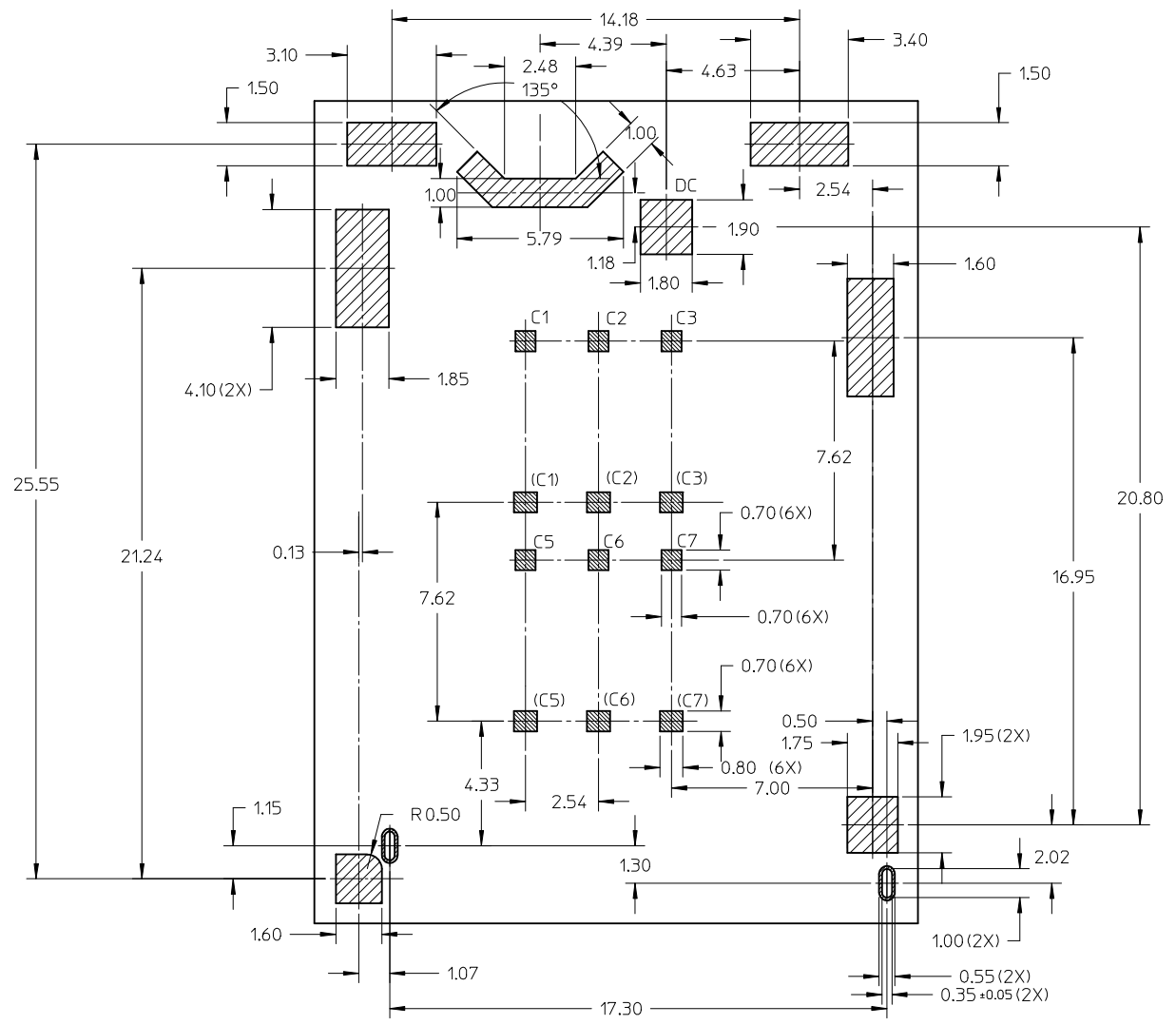
**molex**

SHEET NO.  
2 OF 3


9 8 7 6 5 4 3 2 1

10 9 8 7 6 5 4 3 2 1

78799 SOLDERING AREA:   
 78545 SOLDERING AREA: 

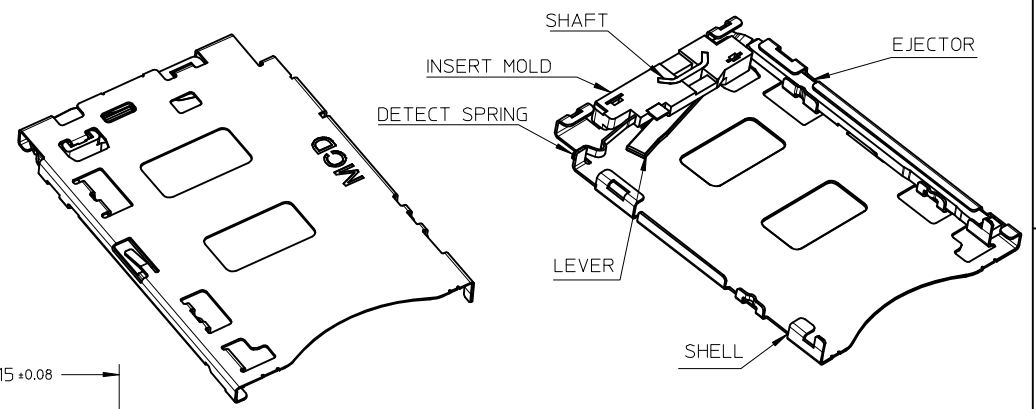
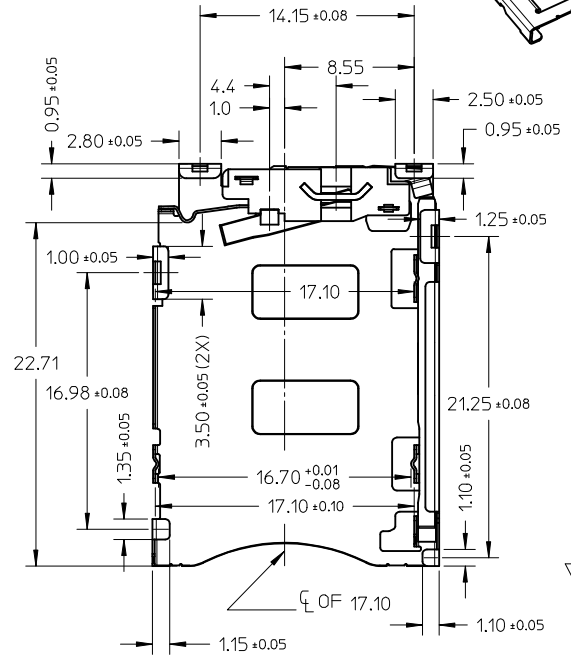
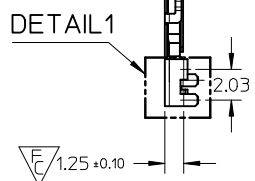
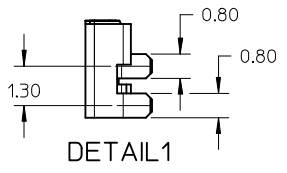
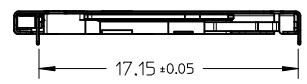
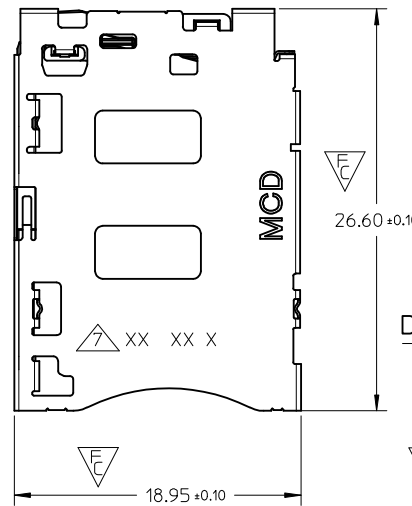
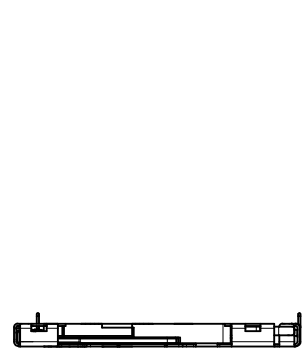


RECOMMENDED PCB LAYOUT  
 TOLERANCE ±0.05 MM  
 RECOMMENDED PCB THICKNESS: 1.00MM

SEE SHEET 1 EC NO: S2014-0574 DRWN: JZENG CHKD: JTAN02 APPR: KHL IM	2013/10/17 2014/01/13 2014/01/18	DESCRIPTION 11	QUALITY SYMBOLS	GENERAL TOLERANCES (UNLESS SPECIFIED)	DIMENSION STYLE	SCALE	DESIGN UNITS	THIRD ANGLE PROJECTION
			$F_A=0$ $F_G=0$ $F_P=0$	mm INCH 4 PLACES ± --- ± --- 3 PLACES ± --- ± --- 2 PLACES ± 0.2 ± --- 1 PLACE ± 0.2 ± --- 0 PLACE ± --- ± ---	MM ONLY	NTS	METRIC	
			ANGULAR ± 3 ° DRAFT WHERE APPLICABLE MUST REMAIN WITHIN DIMENSIONS	DRAWN BY: JZENG CHECKED BY: JTAN02 APPROVED BY: KHL IM MATERIAL NO: 787990001	DATE: 2012/11/12 DATE: 2012/12/31 DATE: 2013/01/04	TITLE	POP OUT SIM FRAME SIM CONNECTOR 1.50H	
						DOCUMENT NO: SD-78799-001 SHEET NO: 3 OF 3		

9 8 7 6 5 4 3 2 1

10 9 8 7 6 5 4 3 2 1



NOTES:  
 1. MATERIALS:  
 INSERT MOLD HOUSING: LCP, UL94V-0;  
 LEVER, SHAFT, EJECTOR, SHELL: STAINLESS STEEL;  
 DETECT SPRING: COPPER ALLOY;  
 2. FINISHES:  
 DETECT SPRING:  
 1.27um MIN. NICKEL UNDERPLATING OVERALL;  
 0.127um MIN. GOLD PLATING ON CONTACT AREA;  
 1.27 um MIN. TIN PLATING ON SOLDERING TAIL;  
 SHELL:  
 1.27um MIN NICKEL UNDERPLATING OVERALL;  
 0.025um MIN GOLD PLATING ON CONTACT AREA AND SOLDERING AREA;  
 SHAFT: 1.27um MIN TIN ON SOLDERING TAIL;  
 3. PRODUCT SPECIFICATION: PS-78799-001;  
 4. PACKAGING SPECIFICATION: PK-78799-001;  
 5. SOLDER TAIL COPLANARITY: 0.08 MM MAX;  
 6. THIS PART IS A FRAME ONLY, IT SHOULD BE USED TOGETHER WITH 0.3MM BLOCK SIM 78545 FOR AN ENTIRE SIM POP OUT SYSTEM;  
 DATE CODE PRINTED: XX XX X  
 DAY  
 WEEK  
 YEAR

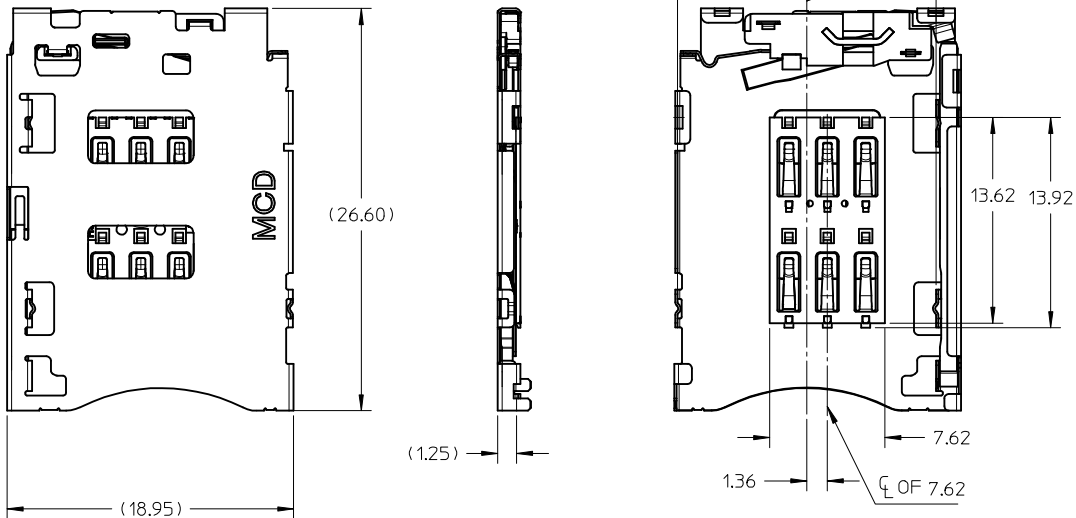
UPDATED DRAWING EC NO: S2014-0574 DRWN: JZENG 2013/10/17 CHKD: JTAN02 2014/01/13 APPR: KHL IM 2014/01/18	QUALITY SYMBOLS	GENERAL TOLERANCES (UNLESS SPECIFIED)	DIMENSION STYLE	SCALE	DESIGN UNITS	THIRD ANGLE PROJECTION
	$\nabla_A = 0$ $\nabla_C = 4$ $\nabla_P = 0$	mm INCH 4 PLACES ± --- ± --- 3 PLACES ± --- ± --- 2 PLACES ± 0.2 ± --- 1 PLACE ± 0.2 ± --- 0 PLACE ± --- ± ---	MM ONLY	NTS	METRIC	
	DESCRIPTION	ANGULAR ± 3 °	DRAWN BY	DATE	TITLE	
	DRAFT WHERE APPLICABLE MUST REMAIN WITHIN DIMENSIONS		JZENG	2012/11/12	POP OUT SIM FRAME SIM CONNECTOR 1.50H	
REV			CHECKED BY	DATE		
11			JTAN02	2012/12/31		
			APPROVED BY	DATE		
			KHL IM	2013/01/04		
			MATERIAL NO.	DOCUMENT NO.		
			787990001	SD-78799-001		
			SIZE	THIS DRAWING CONTAINS INFORMATION THAT IS PROPRIETARY TO MOLEX INCORPORATED AND SHOULD NOT BE USED WITHOUT WRITTEN PERMISSION		
			A3			
						SHEET NO. 1 OF 3

9 8 7 6 5 4 3 2 1

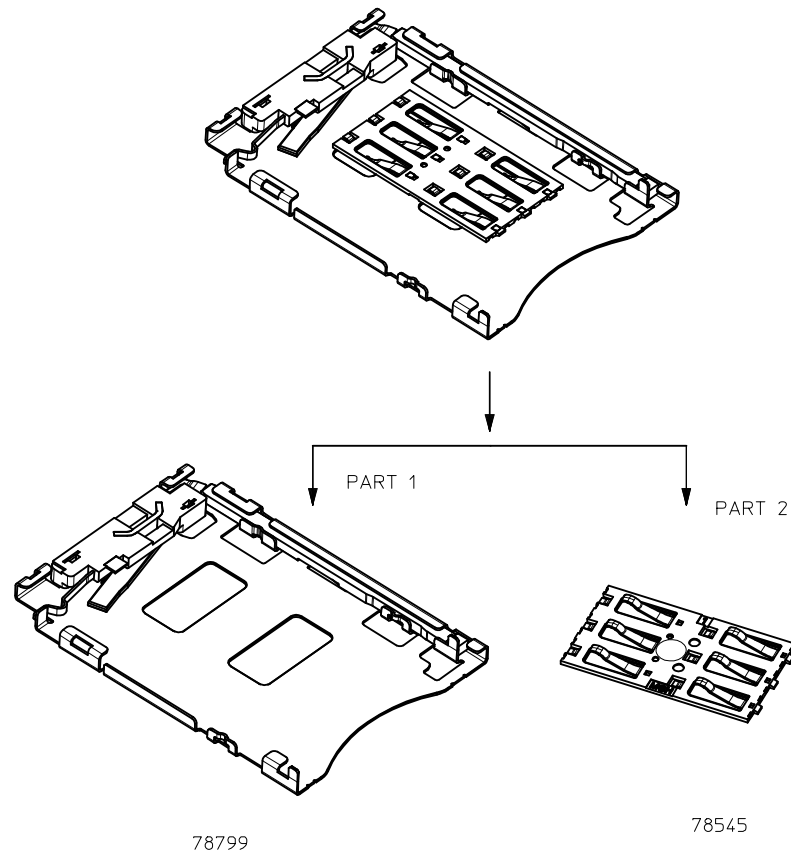


10 9 8 7 6 5 4 3 2 1

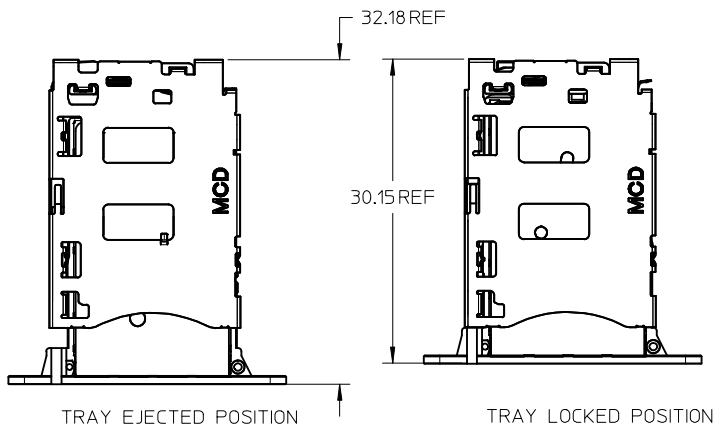
SIM CONNECTOR  
(WITH BLOCK SIM CONNECTOR)



SIM CONNECTOR BOM





SIM CONNECTOR FRAME AND TRAY

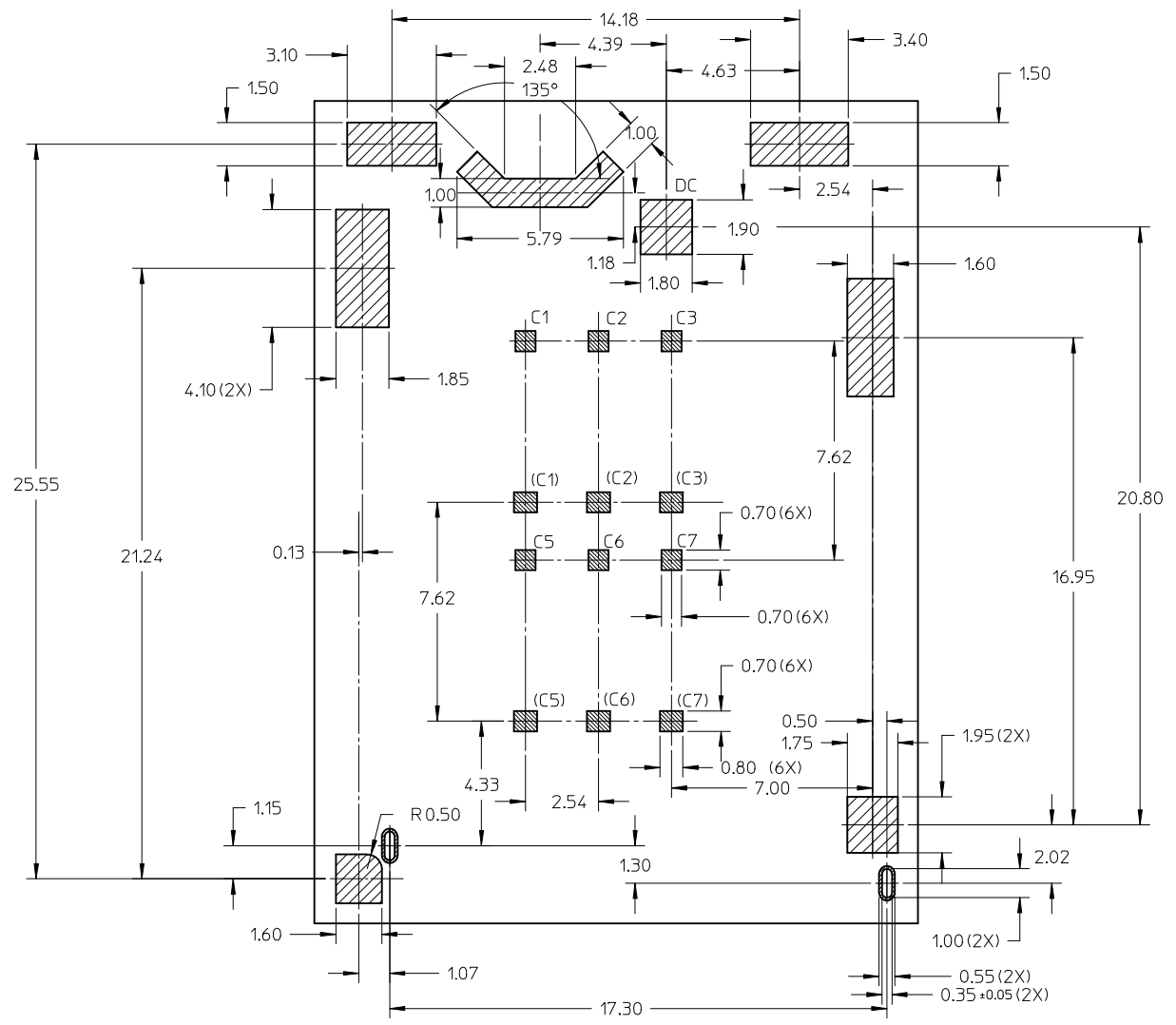


SEE SHEET 1 EC NO: S2014-0574 DRWN: JZENG CHKD: JTAN02 APPR: KHL IM 11	2013/10/17 2014/01/13 2014/01/18	DESCRIPTION QUALITY SYMBOLS $\nabla_A = 0$ $\nabla_C = 0$ $\nabla_P = 0$	GENERAL TOLERANCES (UNLESS SPECIFIED)		DIMENSION STYLE		SCALE	DESIGN UNITS	THIRD ANGLE PROJECTION	
					MM ONLY		NTS	METRIC		
				mm	INCH	DRAWN BY	DATE	TITLE		
			4 PLACES	± ---	± ---	JZENG	2012/11/12	POP OUT SIM FRAME SIM CONNECTOR 1.50H		
3 PLACES	± ---	± ---	CHECKED BY	DATE	<b>molex</b>		MATERIAL NO. 787990001	DOCUMENT NO. SD-78799-001	SHEET NO. 2 OF 3	
2 PLACES	± 0.2	± ---	JTAN02	2012/12/31						
1 PLACE	± 0.2	± ---	APPROVED BY	DATE						
0 PLACE	± ---	± ---	KHL IM	2013/01/04						
			ANGULAR ± 3 °							
			DRAFT WHERE APPLICABLE MUST REMAIN WITHIN DIMENSIONS							


9 8 7 6 5 4 3 2 1

10 9 8 7 6 5 4 3 2 1

78799 SOLDERING AREA:   
 78545 SOLDERING AREA: 



RECOMMENDED PCB LAYOUT  
 TOLERANCE ±0.05 MM  
 RECOMMENDED PCB THICKNESS: 1.00MM

SEE SHEET 1 EC NO: S2014-0574 DRWN: JZENG CHKD: JTAN02 APPR: KHL IM	2013/10/17 2014/01/13 2014/01/18	DESCRIPTION 11	QUALITY SYMBOLS	GENERAL TOLERANCES (UNLESS SPECIFIED)	DIMENSION STYLE	SCALE	DESIGN UNITS	THIRD ANGLE PROJECTION
			$F_A=0$ $F_C=0$ $F_P=0$	mm INCH 4 PLACES ± --- ± --- 3 PLACES ± --- ± --- 2 PLACES ± 0.2 ± --- 1 PLACE ± 0.2 ± --- 0 PLACE ± --- ± ---	MM ONLY	NTS	METRIC	
			ANGULAR ± 3 ° DRAFT WHERE APPLICABLE MUST REMAIN WITHIN DIMENSIONS	DRAWN BY: JZENG CHECKED BY: JTAN02 APPROVED BY: KHL IM MATERIAL NO. 787990001	DATE: 2012/11/12 DATE: 2012/12/31 DATE: 2013/01/04	TITLE	POP OUT SIM FRAME SIM CONNECTOR 1.50H	
							DOCUMENT NO. SD-78799-001 SHEET NO. 3 OF 3	

9 8 7 6 5 4 3 2 1