

PLEASE CHECK WWW.MOLEX.COM FOR LATEST PART INFORMATION

Part Number: [0936010952](#)
Status: **Active**
Overview: GWconnect Heavy Duty Connectors (HDC)
Description: GWconnect STD - Standard, Single Lever Surface Mount Housing, Die-cast Aluminum, with 1 Lever, with Gasket, Size 6B «44X27», M40 Thread, High Construction, Grey

Documents:

[Drawing \(PDF\)](#) [RoHS Certificate of Compliance \(PDF\)](#)

Agency Certification

CSA 256883
 UL E249674

General

Product Family Industrial Connectors / Enclosures
 Series [93601](#)
 Component Size 6B «44x27»
 Component Type Single Lever SMT Housing
 IP Rating IP66
 Overview [GWconnect Heavy Duty Connectors \(HDC\)](#)
 Product Category Heavy Duty Connectors
 Product Name GWconnect
 Standard ANSI/UL 50, ANSI/UL 50 E, CSA C22.2 No.94-1-2, EN 61984
 Taxonomy Heavy-Duty Connectors
 Type STD
 UPC 887191860992

Physical

Housing Coating Polyester Powder
 Housing Color Grey RAL 7037
 Lock to Mating Part Yes
 Material - Gasket NBR
 Material - Housing Die-cast Aluminum
 Material - Lever Galvanized Steel
 Mounting Style Surface Mount
 Net Weight 261.000/g
 Number of Levers 1
 Packaging Type Bag
 Thread Size M40
 Thread Type (M) Metric

Electrical

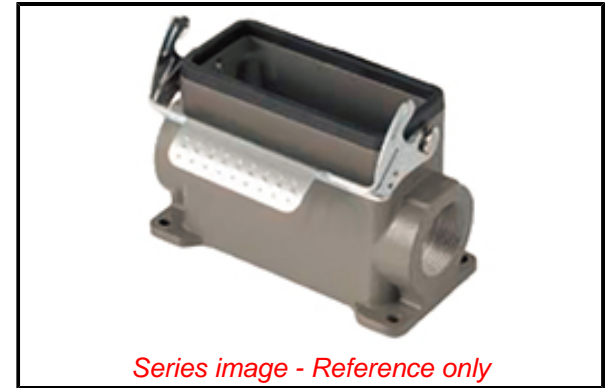
Voltage - Maximum 500V

Material Info

Engineering Number 7806.7153.0

Reference - Drawing Numbers

Sales Drawing 936010944-000



EU ELV

Not Relevant

EU RoHS

Compliant

REACH SVHC

Not Contained Per - ED/71/2019 (16 July 2019)

Halogen-Free

Status

Not Reviewed

For more information, please visit [Contact US](#)

China ROHS

ELV

RoHS Phthalates

ZZCERT_CE -

Declaration of

Conformity

China RoHS

Green Image

Not Relevant

Not Contained

CER_4000400719_00_000.pdf

Search Parts in this Series

[93601 Series](#)

Use With

Size 6B «44x27» S-D, S-DD, S-E, S-EE, S-EP, S-ES, S-HSB, S-ESHV, S-K, S-M, and S-EHV Inserts