

PLEASE CHECK WWW.MOLEX.COM FOR LATEST PART INFORMATION

Part Number: [0765001128](#)
Status: **Active**
Overview: [Impact Backplane Connector and Cable Assembly System](#)
Description: Impact 100 Ohm 4 Pair RAM Right-Angle Header, Unguided, Dual Endwall, 10 Columns, 120 Circuits, Pin Length 5.50mm, Plated Through Hole Dimension 0.39mm, Lead-Free

Documents:

3D Model	Application Specification AS-76060-994-001 (PDF)
Drawing (PDF)	Application Specification AS-76060-9999-001 (PDF)
3D Model (PDF)	Packaging Specification PK-70873-041-001 (PDF)
Product Specification PS-76060-999-001 (PDF)	Symbol Footprint Data SYM-76500-1128 (PDF)
Application Specification AS-76060-990-001 (PDF)	RoHS Certificate of Compliance (PDF)

Agency Certification

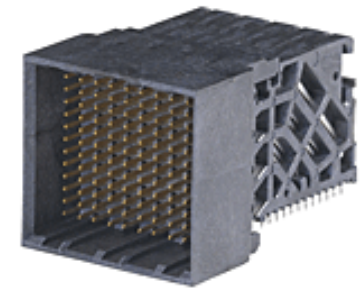
UL E29179

General

Product Family	Backplane Connectors
Series	76500
Application	Coplanar
Application Tooling Documents	TM-622018799
Component Type	PCB Header
Electrical Model	Yes
Overview	Impact Backplane Connector and Cable Assembly System
Product Name	Impact
UPC	884982381278

Physical

Circuits (Loaded)	120
Circuits (maximum)	120
Color - Resin	Black
Durability (mating cycles max)	200
First Mate / Last Break	No
Flammability	94V-0
Guide to Mating Part	No
Keying to Mating Part	None
Material - Metal	High Performance Alloy (HPA)
Material - Plating Mating	Gold
Material - Plating Termination	Tin
Material - Resin	High Temperature Thermoplastic
Net Weight	12.420/g
Number of Columns	10
Number of Pairs	4
Number of Rows	12
Orientation	Right Angle
PC Tail Length	1.20mm
PCB Locator	No
PCB Retention	Yes
PCB Thickness - Recommended	1.00mm
Packaging Type	Tray
Pitch - Mating Interface	1.90mm
Pitch - Termination Interface	1.90mm
Plating min - Mating	0.762µm
Polarized to PCB	No
Stackable	No



Series image - Reference only

EU ELV

Not Relevant

EU RoHS

Compliant

REACH SVHC

Not Contained Per -
D(2020)9139-DC (19
Jan 2021)

Halogen-Free

Status

Low-Halogen

For more information, please visit [Contact US](#)

China ROHS

ELV

RoHS Phthalates

China RoHS

Green Image

Not Relevant

Not Contained

Search Parts in this Series

[76500 Series](#)

Mates With

[76160 Impact 100 Ohm Daughtercard](#)

Temperature Range - Operating -55° to +85°C
Termination Interface: Style Through Hole - Compliant Pin

Electrical

Current - Maximum per Contact 0.75A
Data Rate 25.0 Gbps
Impedance 100Ω
Shield Type N/A
Shielded No
Voltage - Maximum 30V AC (RMS)/DC

Material Info

Reference - Drawing Numbers

Application Specification AS-76060-990-001, AS-76060-994-001,
AS-76060-9999-001
Electrical Model Document EE-76500-002
Packaging Specification PK-70873-041-001
Product Specification PS-76060-999-001
S-Parameter Model SP-76500-002
Sales Drawing SD-76500-001
Symbol/Footprint Data SYM-76500-1128

This document was generated on 05/17/2021

PLEASE CHECK WWW.MOLEX.COM FOR LATEST PART INFORMATION