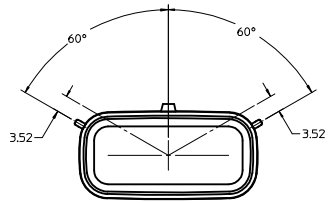


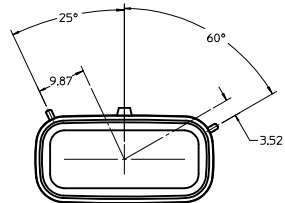
# CUSTOMER SHROUD DESIGN DETAILS

**NOTES:**

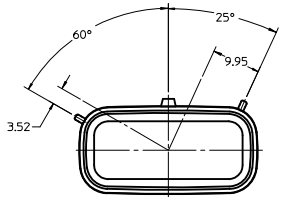
- REFER TO MOLEX SALES DRAWING SD-75900-001 FOR THE R/A HEADER ASSEMBLY PRODUCT DETAILS AND RECOMMENDED PCB LAYOUT.
- KEYING OPTIONS A-D AND SUGGESTED COLORS COMPLY TO THE POLARIZATION STANDARDS ESTABLISHED FOR MATING WITH A MX150 FEMALE CONNECTOR.
- INTERIOR SHROUD SURFACE MUST BE FREE OF DEFECTS AND PARTING LINES ALL AROUND TO ENSURE PROPER SEALING OF THE MATING MX150 FEMALE CONNECTOR.
- A FULL SHROUD ON THE MATING CONNECTOR IS REQUIRED TO INSURE THE HEADER SHROUD POLARIZATION FEATURES (OPTIONS A-D) WILL FUNCTION PROPERLY. THE FULL SHROUD ALSO PREVENTS SCOOP DAMAGE TO THE HEADER CONTACTS.
- PERMISSIBLE DRAFT ANGLE 0.25\014\048\015 MAXIMUM.
- RADIII ON ALL CORNERS SHOWN SHARP OR ALL UNSPECIFIED RADIII 0.25 EXCEPT AS NOTED.
- DIMENSIONS SHOWN ABOUT A CENTERLINE ARE SYMMETRICAL ABOUT THAT CENTERLINE WITHIN HALF THE SPECIFIED TOLERANCE.



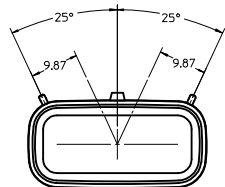
**KEYING OPTION 'A'**  
SUGGESTED COLOR BLACK



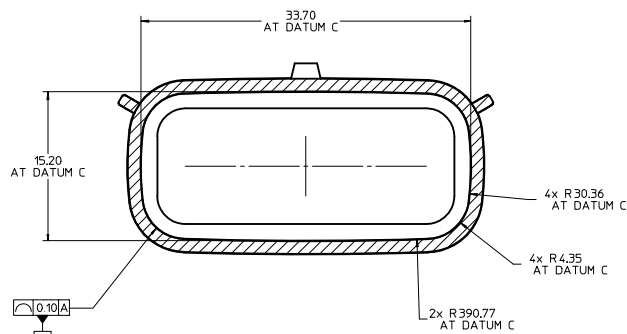
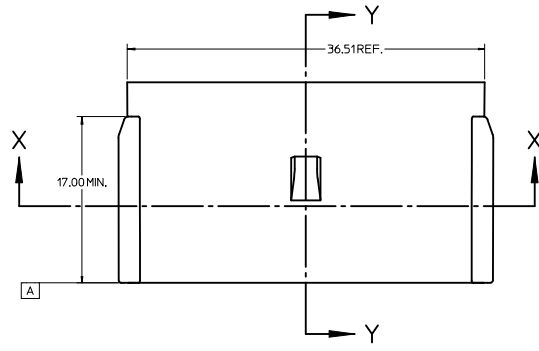
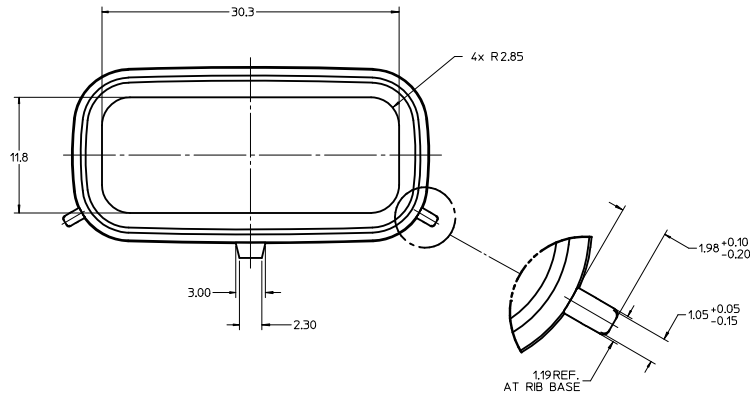
**KEYING OPTION 'B'**  
SUGGESTED COLOR GREY



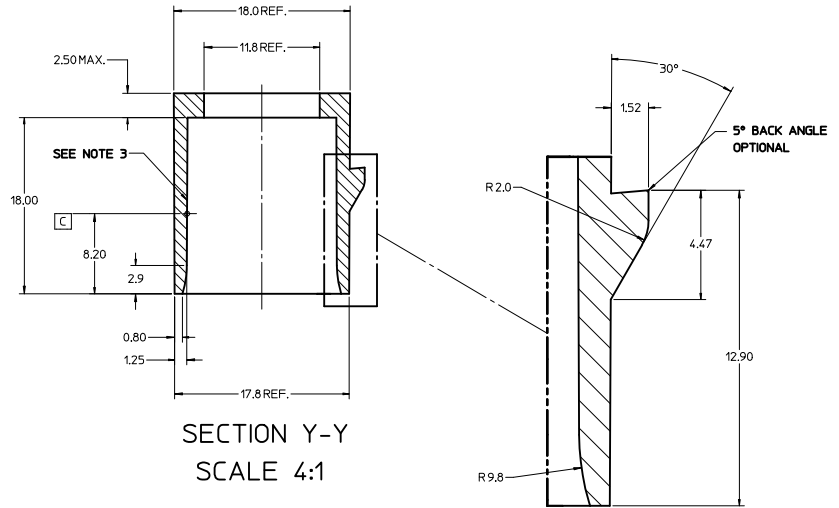
**KEYING OPTION 'C'**  
SUGGESTED COLOR BROWN



**KEYING OPTION 'D'**  
SUGGESTED COLOR GREEN

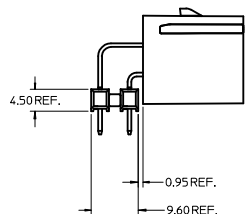
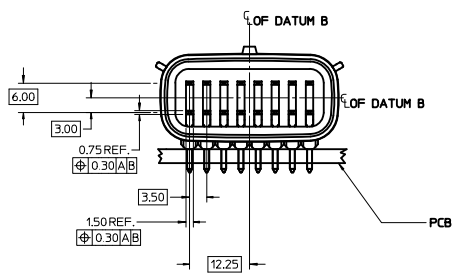
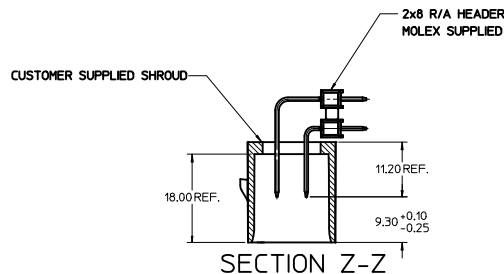
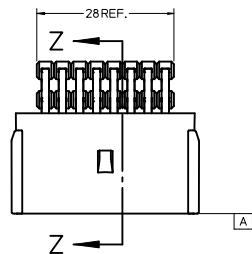


**SECTION X-X**  
SCALE 4:1



**SECTION Y-Y**  
SCALE 4:1

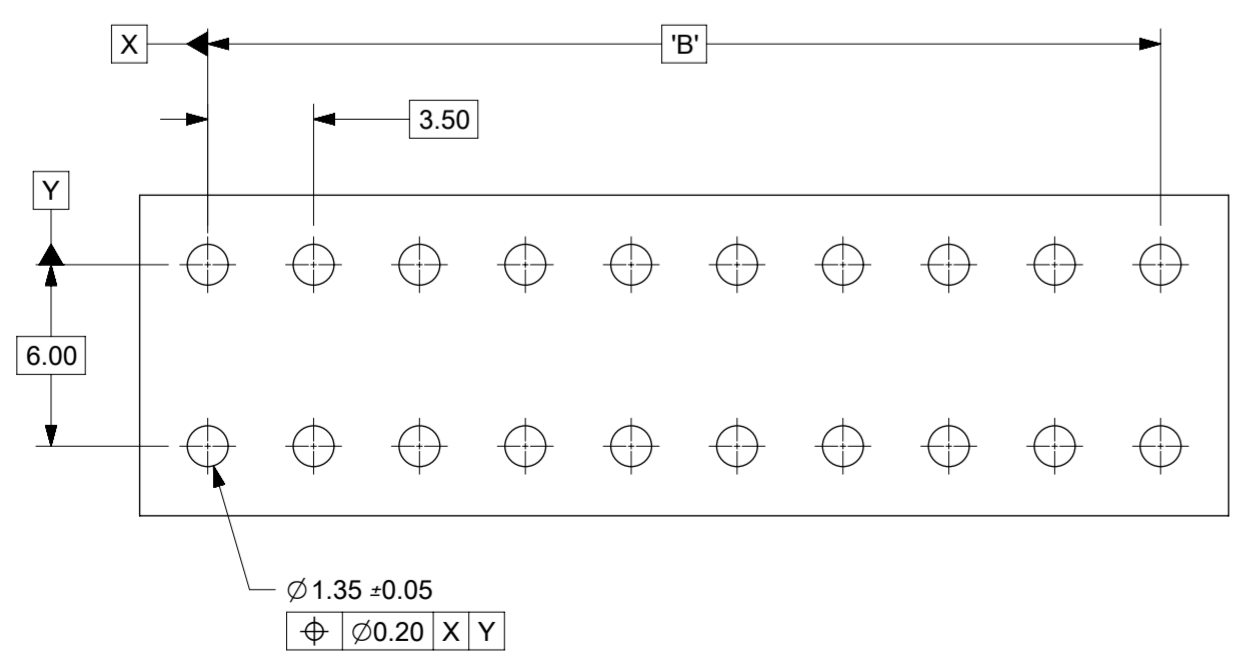
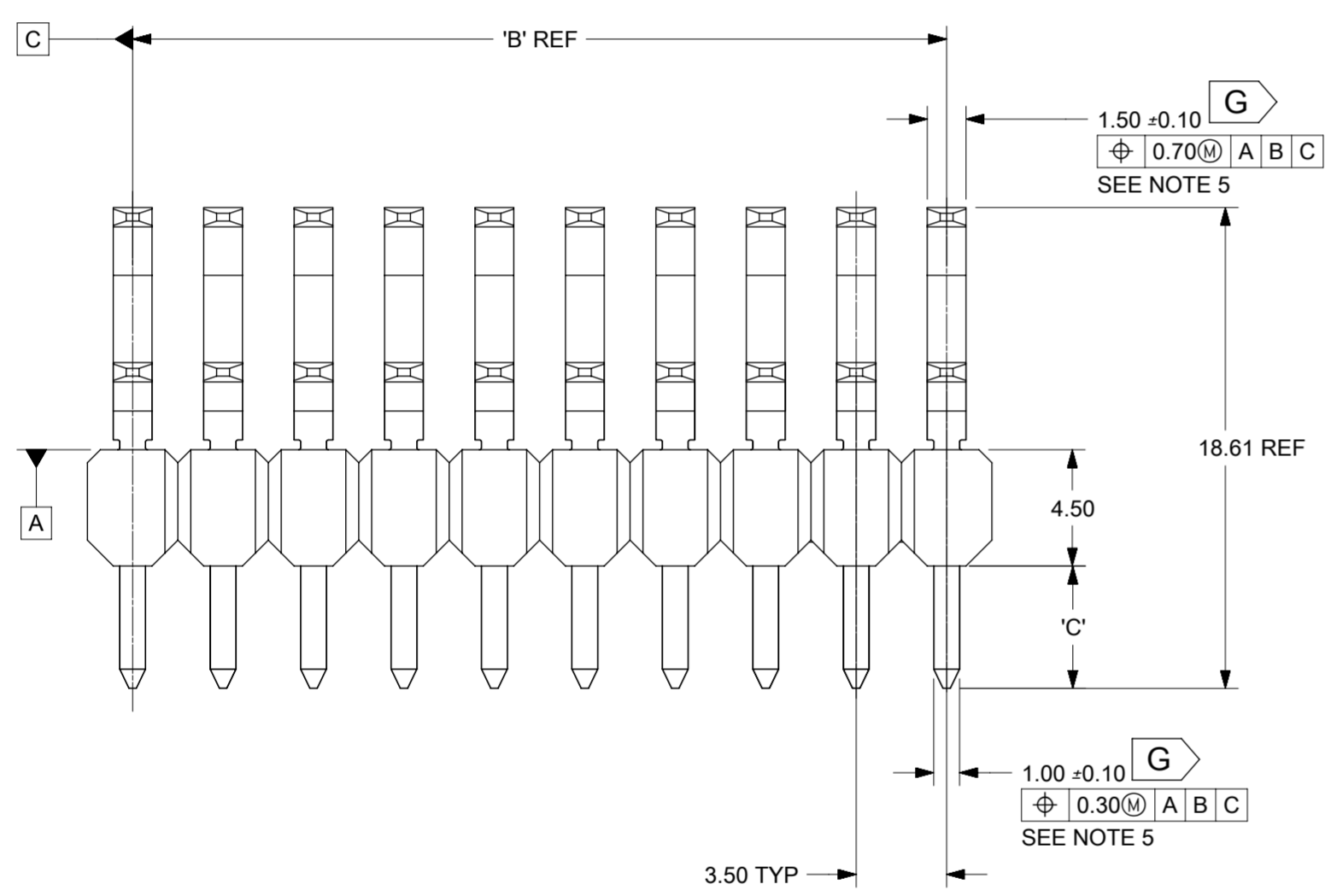
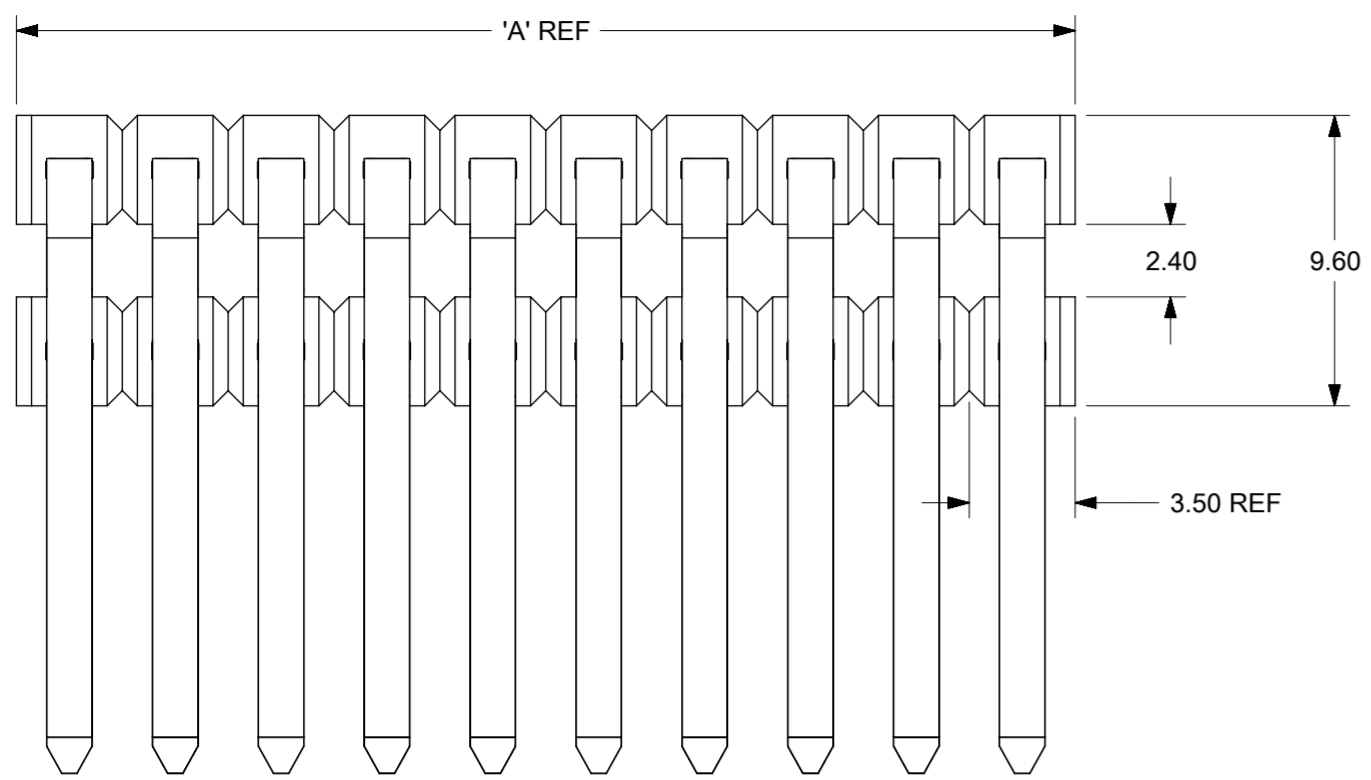
<b>CHANGE CLASS</b> IEC NO: UCP2012-0866 CHKD: DRWN:DROSCA APPR: JCOMERCI REV:	QUALITY SYMBOLS ▽=0 ▽=0	GENERAL TOLERANCES (UNLESS SPECIFIED) mm INCH 4 PLACES ±--- ±--- 3 PLACES ±--- ±--- 2 PLACES ±0.10 ±--- 1 PLACE ±0.2 ±--- ANGULAR ±1/2°	DIMENSION STYLE MM ONLY	SCALE 2:1	DESIGN UNITS METRIC	THIRD ANGLE PROJECTION	
	DRAWN BY: DROSCA CHECKED BY: JCOMERCI APPROVED BY: JCOMERCI	DATE: 04/26/07 DATE: 04/26/07 DATE: 04/26/07	MATERIAL NO: 75900-2080	DOCUMENT NO: AS-75900-208	APPLICATION SPEC 2X8 MX150 R/A HEADER SHROUD DETAILS	MOLEX INCORPORATED	SHEET NO: 1 OF 2
	DRAFT WHERE APPLICABLE MUST REMAIN WITHIN DIMENSIONS						
	THIS DRAWING CONTAINS INFORMATION THAT IS PROPRIETARY TO MOLEX INCORPORATED AND SHOULD NOT BE USED WITHOUT WRITTEN PERMISSION						



HEADER APPLICATION DETAILS

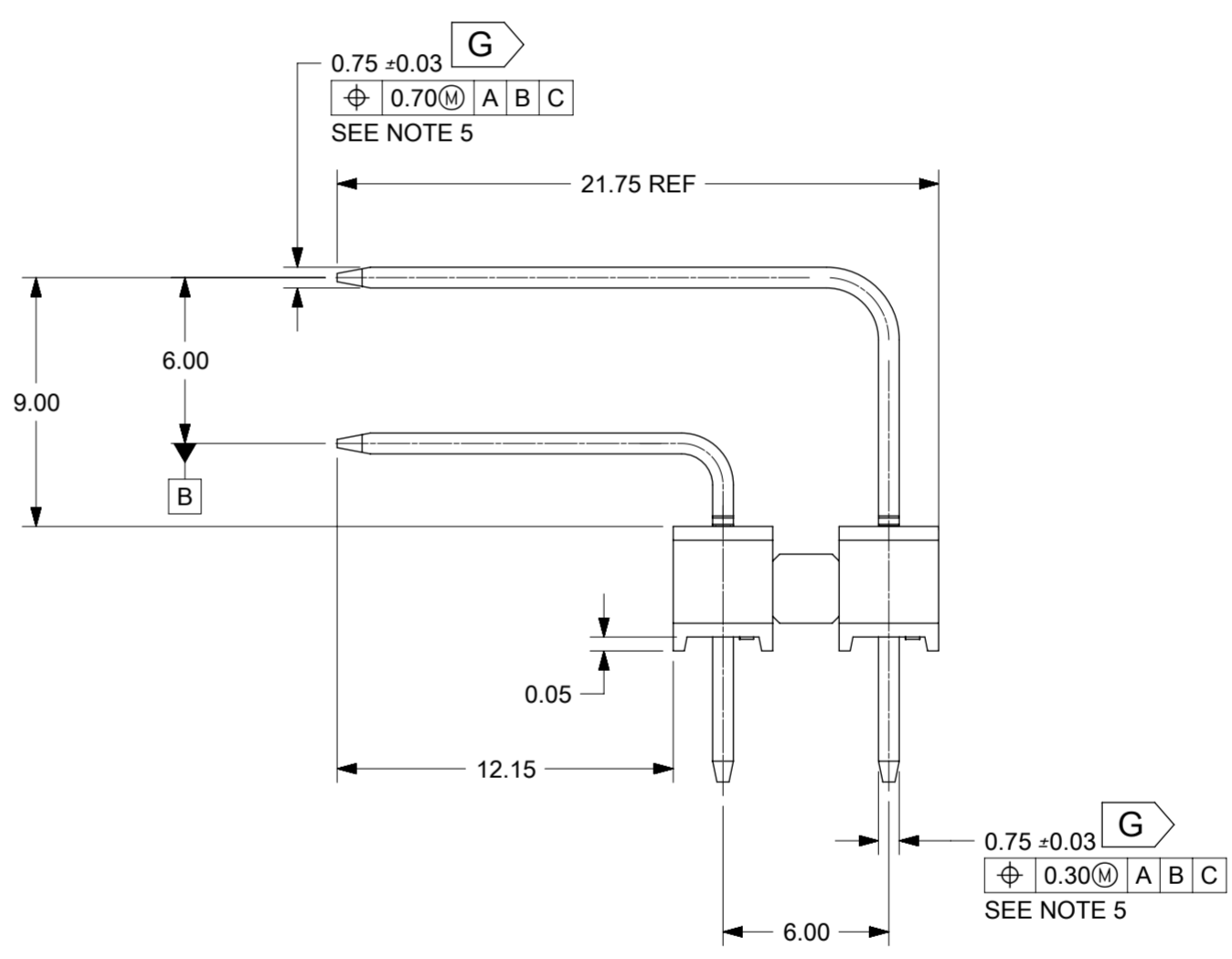
NOTES:  
 1. ADHERENCE TO THE HEADER APPLICATION DETAILS IS IMPERATIVE TO ENSURE PROPOER SHROUD SEALING AND CONTACT ALIGNMENT WHEN MATED WITH A MX150 FEMALE CONNECTOR.

ENTER DESCRIPTION IEC NO. UCF2012-0866 DRAWN BY: DROS CHYD: APPR: JCOMERCI 2011/09/16	QUALITY SYMBOLS	GENERAL TOLERANCES (UNLESS SPECIFIED)	DIMENSION STYLE	SCALE	DESIGN UNITS	THIRD ANGLE PROJECTION
	▽=0 ▽=0	mm INCH 4 PLACES ± --- ± --- 3 PLACES ± --- ± --- 2 PLACES ± 0.10 ± --- 1 PLACE ± 0.2 ± --- ANGULAR ± 1/2°	MM ONLY	2:1	METRIC	TITLE: APPLICATION SPEC 2X8 MX150 R/A HEADER SHROUD DETAILS MOLEX INCORPORATED
	MATERIAL NO. 75900-2080	DATE 04/26/07	DATE 04/26/07	DATE 04/26/07	DATE 04/26/07	SHEET NO. 2 OF 2
	DRAFT WHERE APPLICABLE MUST REMAIN WITHIN DIMENSIONS		WATER NO. 75900-2080		DOCUMENT NO. AS-75900-208	



NOTES:

1. TERMINAL MAT'L: ALLOY C26000, CARTRIDGE BRASS
2. WAFER MAT'L: 30% GLASS FILLED LCP, 94V-0, COLOR BLACK.
3. TERMINAL PLATING:
  - OPTION 4 - 1.5µm MIN MATTE TIN OVERALL OVER 1.25µm NICKEL OVERALL
  - OPTION 1 - 2.5µm MIN MATTE TIN OVERALL OVER 1.25µm NICKEL OVERALL
  - OPTION 2 - 1.25µm NICKEL OVERALL 2.5µm MIN SELECT MATTE TIN PC TAIL  
AREA 0.05-0.25µm SELECT GOLD CONTACT AREA
  - OPTION 3 - 1.25µm NICKEL OVERALL 2.5µm MIN SELECT MATTE TIN PC TAIL  
AREA 0.75µm SELECT GOLD CONTACT AREA
4. HEADER ASSEMBLIES ARE TUBE PACKAGED PER PK-36518-351.
5. ALL THE POSITIONAL TOLERANCES SHOULD BE MEASURED AT TIP OF THE TERMINALS.
6. DATUM SHOULD BE CONSIDERED FROM THE EDGES OF THE HOUSING.
7. POSITION TOLERANCES OF THE PIN AT MATING SIDE SHOULD BE MAINTAINED AT 0.3 MM IN THE FINAL MODULE BY CUSTOMER.
8. **G** DENOTES DIMENSIONS THAT CAN BE QUALIFIED WITH A GAUGE.
9. BLADE GEOMETRY DOES NOT CONFORM TO USCAR SPECIFICATIONS.



QUALITY SYMBOLS	THIS DRAWING CONTAINS INFORMATION THAT IS PROPRIETARY TO MOLEX ELECTRONIC TECHNOLOGIES, LLC AND SHOULD NOT BE USED WITHOUT WRITTEN PERMISSION			
	DRWN BY	DATE	DIMENSION UNITS	SCALE
▽ = 0	2017/06/12	2017/06/30	MM	4:1
▽ = 0	GENERAL TOLERANCES (UNLESS SPECIFIED)		TMCCLELL 2006/02/02	
▽ = 0	ANGULAR TOL ± 0.5 °		CHK'D BY DATE	
▼ = 0	4 PLACES ±		TMCCLELL 2006/02/03	
▽ = 0	3 PLACES ±		APPR BY DATE	
▽ = 0	2 PLACES ± 0.13		MBANAKIS 2006/02/08	
▽ = 0	1 PLACE ± 0.25		DRAWING SIZE THIRD ANGLE PROJECTION	
⊠ = 0	0 PLACES ±		A2	
■ = 0	DRAFT WHERE APPLICABLE MUST REMAIN WITHIN DIMENSIONS			
▽ = 0	EC NO: 118009	DRWN: RGV	CHKD: VUTTARKAR	APP: VUTTARKAR
	REV: C1			
RELEASE STATUS P1			RELEASE DATE 30.06.2017	13:31:06
75900		SEE CHART	GENERAL MARKET	
SD-75900-001		PSD	DOC PART 001	SHEET NUMBER 1 OF 2

2 x 2	1	75900-1121	7.0	3.50 REF	3.05	75900-1122	7.0	3.50 REF	4.75
	2	75900-1221				75900-1222			
	3	75900-1321				75900-1322			
	4	75900-1421				75900-1422			
2 x 3	1	75900-1131	10.5	7.00	3.05	75900-1132	10.5	7.00	4.75
	2	75900-1231				75900-1232			
	3	75900-1331				75900-1332			
	4	75900-1431				75900-1432			
2 x 4	1	75900-1141	14.0	10.50	3.05	75900-1142	14.0	10.50	4.75
	2	75900-1241				75900-1242			
	3	75900-1341				75900-1342			
	4	75900-1441				75900-1442			
2 x 5	1	75900-1151	17.5	14.00	3.05	75900-1152	17.5	14.00	4.75
	2	75900-1251				75900-1252			
	3	75900-1351				75900-1352			
	4	75900-1451				75900-1452			
2 x 6	1	75900-1161	21.0	17.50	3.05	75900-1162	21.0	17.50	4.75
	2	75900-1261				75900-1262			
	3	75900-1361				75900-1362			
	4	75900-1461				75900-1462			
2 x 8	1	75900-1181	28.0	24.50	3.05	75900-1182	28.0	24.50	4.75
	2	75900-1281				75900-1282			
	3	75900-1381				75900-1382			
	4	75900-1481				75900-1482			
2 x 10	1	75900-1101	35.0	31.50	3.05	75900-1102	35.0	31.50	4.75
	2	75900-1201				75900-1202			
	3	75900-1301				75900-1302			
	4	75900-1401				75900-1402			
CKT SIZE	PLATING OPTION	MATERIAL NUMBER	"A" DIM	"B" DIM	"C" DIM	MATERIAL NUMBER	"A" DIM	"B" DIM	"C" DIM

QUALITY SYMBOLS	THIS DRAWING CONTAINS INFORMATION THAT IS PROPRIETARY TO MOLEX ELECTRONIC TECHNOLOGIES, LLC AND SHOULD NOT BE USED WITHOUT WRITTEN PERMISSION												
▽ = 0	EC NO: 118009 DRWN: RGV CHKD: VUTTARKAR APP: VUTTARKAR	2017/06/12	2017/06/30	GENERAL TOLERANCES (UNLESS SPECIFIED)		DIMENSION UNITS	SCALE	<b>molex</b> <sup>®</sup>					
▽ = 0				ANGULAR TOL ± 0.5 °		MM	1:1						
▽ = 0				4 PLACES ±		DRWN BY	DATE	TMCCLELL		2006/02/02		MX150 RIGHT ANGLE DUAL ROW UNSHROUDED HEADER ASSEMBLY	
▼ = 0				3 PLACES ±		CHK'D BY	DATE	TMCCLELL		2006/02/03			
▽ = 0				2 PLACES ± 0.13		APPR BY	DATE	MBANAKIS		2006/02/08		PRODUCT CUSTOMER DRAWING	
☒ = 0				1 PLACE ± 0.25		DRAWING SIZE		THIRD ANGLE PROJECTION		SERIES	MATERIAL NUMBER	CUSTOMER	
■ = 0				0 PLACES ±		A2		THIRD ANGLE PROJECTION		75900	SEE CHART	GENERAL MARKET	
▽ = 0				DRAFT WHERE APPLICABLE MUST REMAIN WITHIN DIMENSIONS		A2		THIRD ANGLE PROJECTION		DOCUMENT NUMBER	DOC TYPE	DOC PART	SHEET NUMBER
▽ = 0				C1						SD-75900-001	PSD	001	2 OF 2