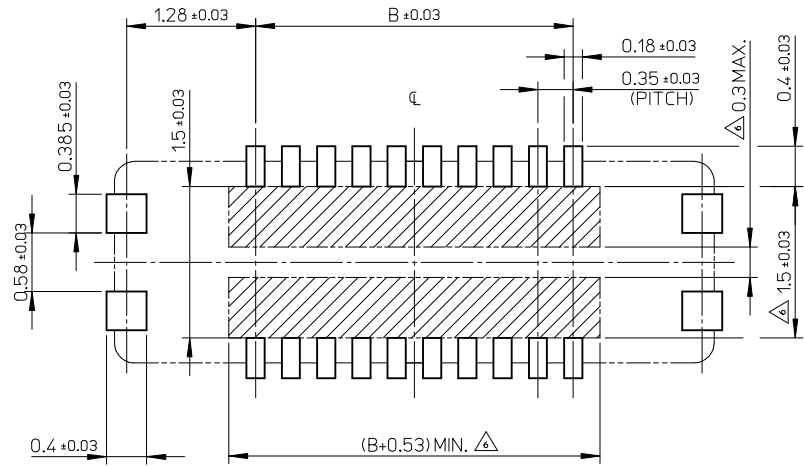


11.90	14.70	505066-7010	---	---	70
10.85	13.65	505066-6410	---	---	64
10.15	12.95	505066-6010	---	---	60
9.80	12.60	505066-5810	---	---	58
9.10	11.90	505066-5410	---	---	54
8.40	11.20	505066-5010	---	---	50
8.05	10.85	505066-4810	o	---	48
7.70	10.50	505066-4610	---	---	46
7.00	9.80	505066-4210	---	---	42
6.65	9.45	505066-4010	o	---	40
6.30	9.10	505066-3810	---	---	38
5.60	8.40	505066-3410	o	---	34
4.90	7.70	505066-3010	o	---	30
3.85	6.65	505066-2410	o	---	24
3.50	6.30	505066-2210	---	---	22
3.15	5.95	505066-2010	---	---	20
2.80	5.60	505066-1810	---	---	18
2.45	5.25	505066-1610	o	---	16
2.10	4.90	505066-1410	---	---	14
1.75	4.55	505066-1210	o	---	12
1.40	4.20	505066-1010	---	---	10
0.70	3.50	505066-0610	o	---	6

NOTES

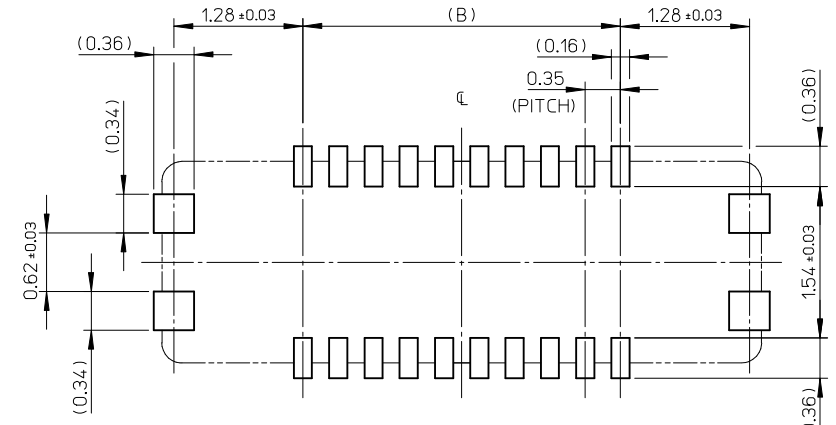
- MATERIAL
HOUSING : LIQUID CRYSTAL POLYMER UL94V-0(COLOR : BLACK)
TERMINAL : COPPER ALLOY
FITTING NAIL : COPPER ALLOY
- PLATING
TERMINAL :
GOLD
UNDER PLATING : NICKEL
*DIVIDE INTO PARTS THE GOLD PLATING OF THE CONTACT AND THE TAIL PART BY THE NICKEL PLATING.
FITTING NAIL :
GOLD
UNDER PLATING : NICKEL
*DIVIDE INTO PARTS THE GOLD PLATING OF THE CONTACT AND THE TAIL PART BY THE NICKEL PLATING.
- APPLY FOR (CIRCUIT/2)=EVEN.
- MATE WITH : 505070-***10
- TAIL AND FITTING NAIL COPLANARITY TO BE 0.08MAXIMUM.
- PROHIBITED AREA OF PATTERN WIRING AND SOLDER.
(FOR EACH AREA, THE WIRING THAT TOUCHES ON THE SOLDER CAN BE ATTACHED, THEN COVERED WITH A FILM TO KEEP SOLDER OUT.)
- ELV and RoHS COMPLIANT.

REVISED EC NO: J2016-0051 DRWN:TSOMEYA 2015/07/15 CHKD:KTANAKA03 2015/07/15 APPR:KMORIKAWA 2015/07/15	DESCRIPTION	GENERAL TOLERANCES (UNLESS SPECIFIED)	DIMENSION STYLE MM ONLY	SCALE 20:1	DESIGN UNITS METRIC	THIRD ANGLE PROJECTION
		0.25 UNDER ±0.03	DRAWN BY DATE KSASAKI 2014/04/07	TITLE	0.35 BB CONN. H=0.6 SSB6 RP REC. ASSY	
		0.25 OVER 0.5 UNDER ±0.05	CHECKED BY DATE KTANAKA03 2014/04/07			
		0.5 OVER 1.0 UNDER ±0.1	APPROVED BY DATE KMORIKAWA 2014/04/08			
	1.0 OVER 10 UNDER ±0.2	MATERIAL NO.	SEE CHART	DOCUMENT NO.	SD-505066-001	
	10 OVER 30 UNDER ±0.25	DRAFT WHERE APPLICABLE MUST REMAIN WITHIN DIMENSIONS		SIZE A3	THIS DRAWING CONTAINS INFORMATION THAT IS PROPRIETARY TO MOLEX INCORPORATED AND SHOULD NOT BE USED WITHOUT WRITTEN PERMISSION	
	30 OVER ±0.3			SHEET NO. 1 OF 2		



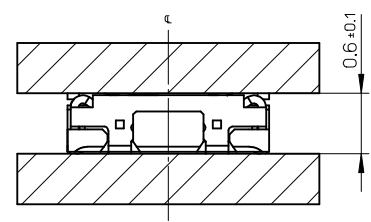
RECOMMENDED P.W.BOARD PATTERN LAYOUT (REFERENCE)

△ PROHIBITED AREA OF PATTERN WIRING AND SOLDER.
 (FOR EACH AREA, THE WIRING THAT TOUCHES ON THE SOLDER
 CAN BE ATTACHED, THEN COVERED WITH A FILM TO KEEP SOLDER OUT.)



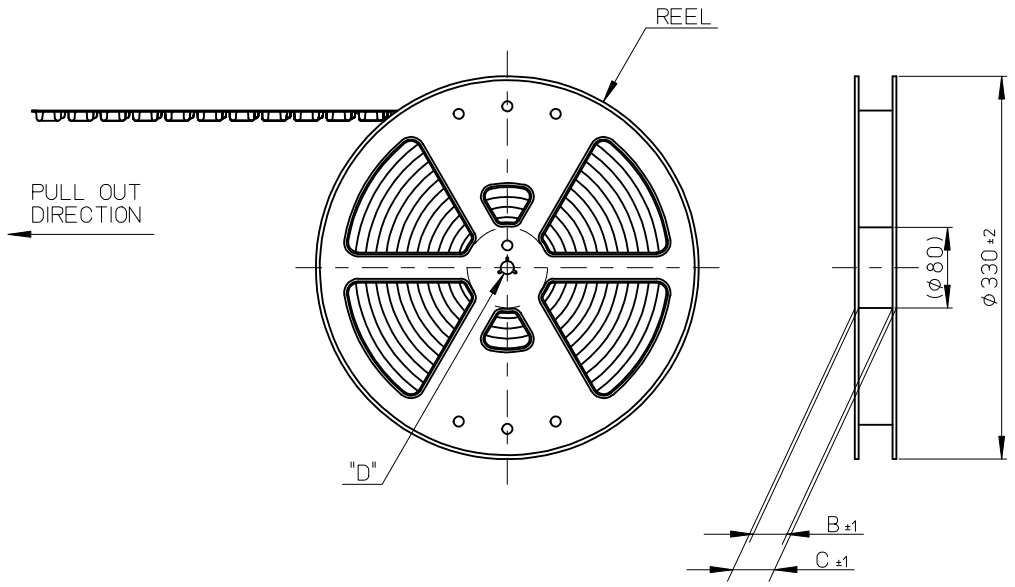
RECOMMENDED METAL MASK LAYOUT (REFERENCE)

RECOMMENDED THICKNESS OF METAL MASK : t=0.08mm
 RECOMMENDED OPEN APERTURE RATIO OF METAL MASK : 80%

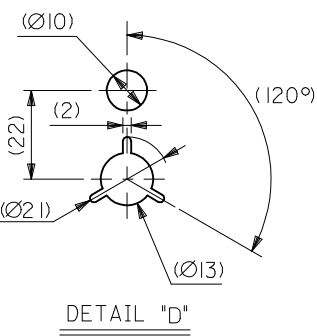


MATED CONDITION

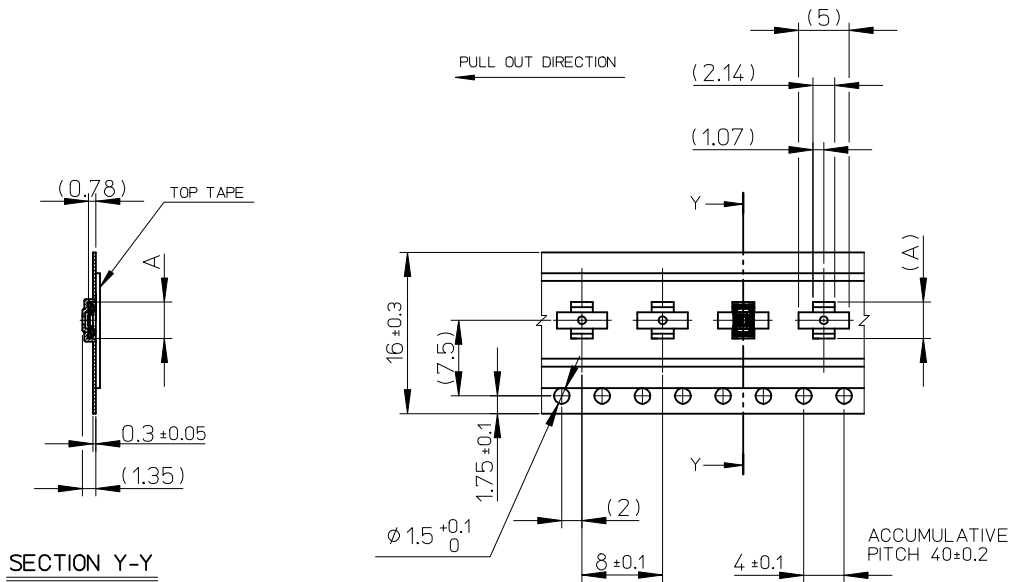
ENTER DESCRIPTION EC NO: J2016-0051 DRWN: TSOMEYA 2015/07/15 CHKD: KTANAKA03 2015/07/15 APPR: KMORIKAWA 2015/07/15	GENERAL TOLERANCES (UNLESS SPECIFIED)		DIMENSION STYLE MM ONLY		SCALE 20:1	DESIGN UNITS METRIC	THIRD ANGLE PROJECTION	
	0.25 UNDER	± 0.03	DRAWN BY	DATE	TITLE			
	0.25 OVER	0.5 UNDER	± 0.05	KSASAKI	2014/04/07	0.35 BB CONN. H=0.6		
	0.5 OVER	1.0 UNDER	± 0.1	CHECKED BY	DATE	SSB6 RP		
	1.0 OVER	10 UNDER	± 0.2	KTANAKA03	2014/04/07	REC. ASSY		
10 OVER	30 UNDER	± 0.25	APPROVED BY	DATE	molex DOCUMENT NO. SD-505066-001 SHEET NO. 2 OF 2			
30 OVER	± 0.3	APPROVED BY	DATE					
ANGULAR	± 1 °	MATERIAL NO.		9999999999				
DRAFT WHERE APPLICABLE MUST REMAIN WITHIN DIMENSIONS				SIZE A3	THIS DRAWING CONTAINS INFORMATION THAT IS PROPRIETARY TO MOLEX INCORPORATED AND SHOULD NOT BE USED WITHOUT WRITTEN PERMISSION			



- NOTES**
- RE DETAILED DIMENSION, SEE PRODUCT DRAWING.
 - NUMBER OF CONNECTORS : 3000PCS/REEL
 - LEAD TAPE LENGTH
-
- TOP TAPE PEEL FORCE IS DEFINED BY IEC60286-3.
 - MATERIAL
 CARRIER TAPE : POLYSTYRENE
 TOP TAPE : PET , OTHER
 REEL : POLYSTYRENE (PS) <RECYCLE MATERIAL CONTAINED>
 - ELV AND RoHS COMPLIANT

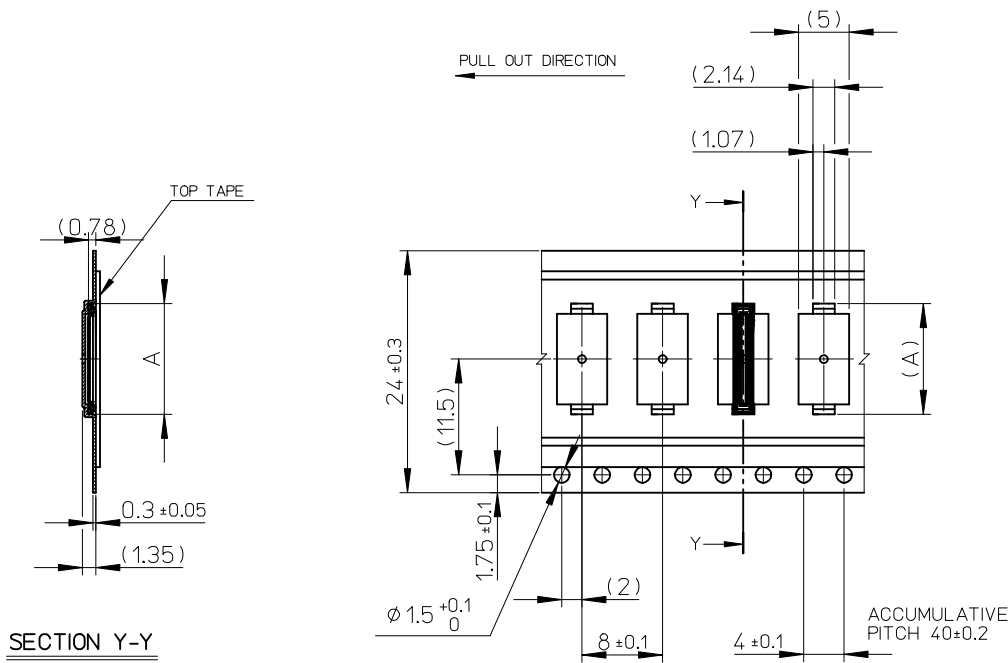


REVISED EC NO: J2016-0051 DRWN:TSOMEYA 2015/07/15 CHK'D:KTANAKA03 2015/07/15 APPR:KMORIKAWA 2015/07/15	GENERAL TOLERANCES (UNLESS SPECIFIED)		DIMENSION STYLE		MODEL NO.	505066-**10
	0.25 UNDER ±0.03		MM ONLY		DESIGN UNITS	METRIC
	0.25 OVER 0.5 UNDER ±0.05		DRAWN BY DATE		0.35 BB CONN. H=0.6 SSB6 RP REC. ASSY EMBSTP PKG	
	0.5 OVER 1.0 UNDER ±0.1		KSASAKI 2014/04/07			
	1.0 OVER 10 UNDER ±0.2		CHECKED BY DATE			
10 OVER 30 UNDER ±0.25		KTANAKA03 2014/04/07				
30 OVER ±0.3		APPROVED BY DATE		DOCUMENT NO.	SD-505066-002	
ANGULAR ±1 °		KMORIKAWA 2014/04/08		MATERIAL NO.	SEE CHART	
DRAFT WHERE APPLICABLE MUST REMAIN WITHIN DIMENSIONS		MATERIAL NO.		SHEET NO.		
		SIZE		1 OF 3		
		A3		THIS DRAWING CONTAINS INFORMATION THAT IS PROPRIETARY TO MOLEX INCORPORATED AND SHOULD NOT BE USED WITHOUT WRITTEN PERMISSION		



16	21.4	17.4	7.82	505066-3010	o	---	30		
			6.77	505066-2410	o	---	24		
			6.42	505066-2210	---	---	22		
			6.07	505066-2010	---	---	20		
			5.72	505066-1810	---	---	18		
			5.37	505066-1610	o	---	16		
			5.02	505066-1410	---	---	14		
			4.67	505066-1210	o	---	12		
			4.32	505066-1010	---	---	10		
			3.62	505066-0610	o	---	6		
キャリアテープ幅 CARRIER TAPE WIDTH			C	B	(A)	MATERIAL No.	HIGH VOL. TOOL	LOW VOL. TOOL	CIRCUIT
							SAMPLE PREPARATION		

SEE SHEET 1 OF 3 EC NO: J2016-0051 DRWN: ISOMEYA 2015/07/15 CHKD: KTANAKA03 2015/07/15 APPR: KMORIKAWA 2015/07/15	GENERAL TOLERANCES (UNLESS SPECIFIED)		DIMENSION STYLE		SCALE	DESIGN UNITS	THIRD ANGLE PROJECTION		
	0.25 UNDER ±0.03		MM ONLY		2:1	METRIC	CIRCUIT		
	0.25 OVER 0.5 UNDER ±0.05		DRAWN BY DATE		TITLE				
	0.5 OVER 1.0 UNDER ±0.1		KSASAKI 2014/04/07		0.35 BB CONN. H=0.6				
	1.0 OVER 10 UNDER ±0.2		CHECKED BY DATE		SSB6 RP REC. ASSY				
10 OVER 30 UNDER ±0.25		KTANAKA03 2014/04/07		EMBSTP PKG					
30 OVER ±0.3		APPROVED BY DATE		molex					
ANGULAR ±1 °		KMORIKAWA 2014/04/08		MATERIAL NO.		DOCUMENT NO.		SHEET NO.	
DRAFT WHERE APPLICABLE MUST REMAIN WITHIN DIMENSIONS		SEE CHART		SD-505066-002		2 OF 3			
		SIZE A3		THIS DRAWING CONTAINS INFORMATION THAT IS PROPRIETARY TO MOLEX INCORPORATED AND SHOULD NOT BE USED WITHOUT WRITTEN PERMISSION					



24	29.4	25.4	13.77	505066-6410	---	---	64		
			13.07	505066-6010	---	---	60		
			12.02	505066-5410	---	---	54		
			11.32	505066-5010	---	---	50		
			10.99	505066-4810	o	---	48		
			10.62	505066-4610	---	---	46		
			9.92	505066-4210	---	---	42		
			9.57	505066-4010	o	---	40		
8.52	505066-3410	o	---	34					
キャリアテープ幅 CARRIER TAPE WIDTH			C	B	(A)	MATERIAL No.	HIGH VOL. TOOL	LOW VOL. TOOL	CIRCUIT
SAMPLE PREPARATION									

SEE SHEET 1 OF 3 EC NO: J2016-0051 DRWN: ISOMEYA 2015/07/15 CHKD: KTANAKA03 2015/07/15 APPR: KMORIKAWA 2015/07/15	GENERAL TOLERANCES (UNLESS SPECIFIED)		DIMENSION STYLE MM ONLY		SCALE 2:1	DESIGN UNITS METRIC	THIRD ANGLE PROJECTION		
	0.25 UNDER	±0.03	DRAWN BY	DATE	TITLE				
	0.25 OVER 0.5 UNDER	±0.05	KSASAKI	2014/04/07	0.35 BB CONN. H=0.6 SSB6 RP REC. ASSY EMBSTP PKG				
	0.5 OVER 1.0 UNDER	±0.1	CHECKED BY	DATE	molex				
	1.0 OVER 10 UNDER	±0.2	KTANAKA03	2014/04/07					
10 OVER 30 UNDER	±0.25	APPROVED BY	DATE	DOCUMENT NO.		SHEET NO.			
30 OVER	±0.3	KMORIKAWA	2014/04/08	SD-505066-002		3 OF 3			
ANGULAR	±1 °	MATERIAL NO.		SEE CHART					
DRAFT WHERE APPLICABLE MUST REMAIN WITHIN DIMENSIONS			SIZE A3	THIS DRAWING CONTAINS INFORMATION THAT IS PROPRIETARY TO MOLEX INCORPORATED AND SHOULD NOT BE USED WITHOUT WRITTEN PERMISSION					