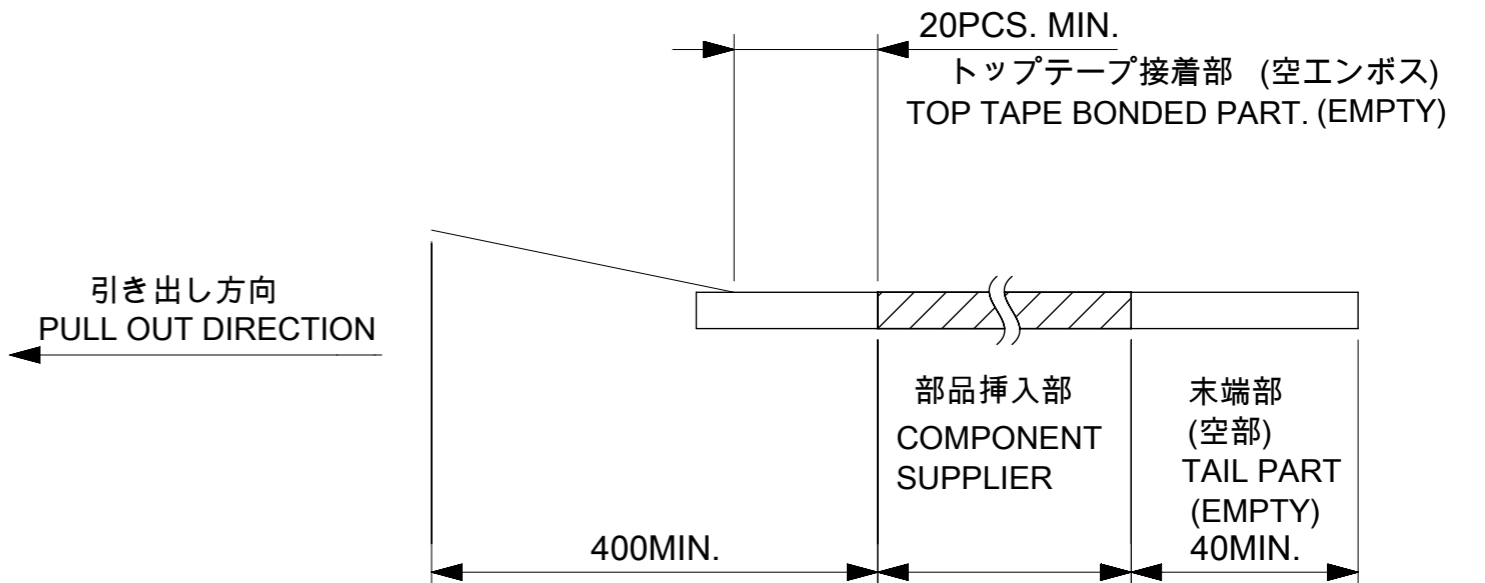
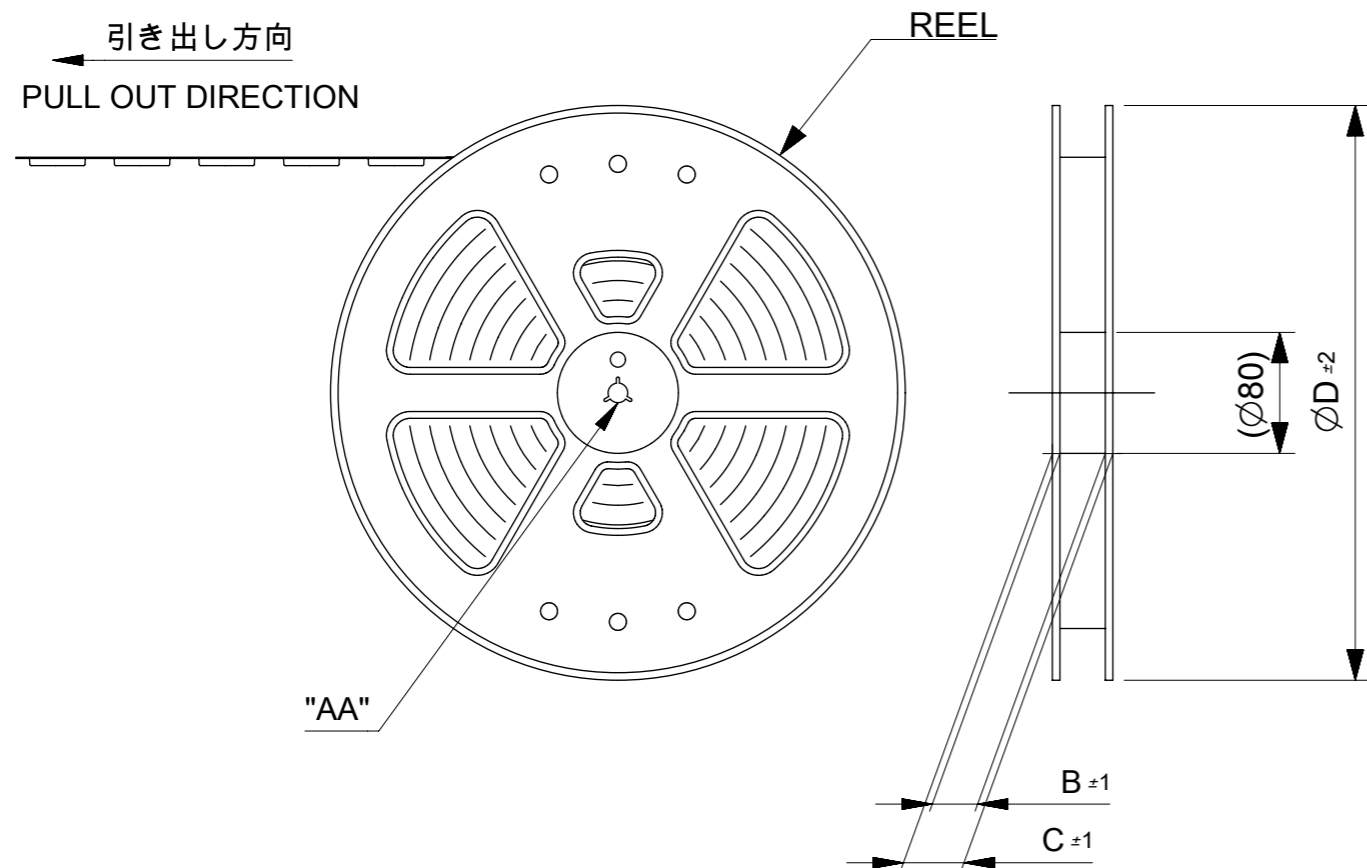
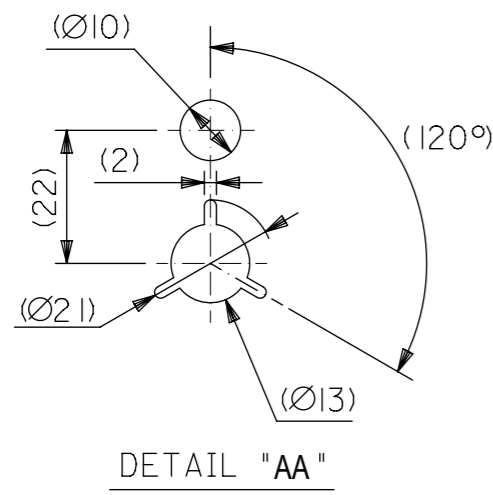


NOTES

- 製品詳細寸法については製品単体図面を参照下さい。
FOR DETAILED DIMENSION, SEE PRODUCT DRAWING.
- 梱包数量：シート2,3の表をご確認ください。
NUMBER OF CONNECTORS : SEE CHART ON SHEET2,3
- リードテープ長さ LEAD TAPE LENGTH

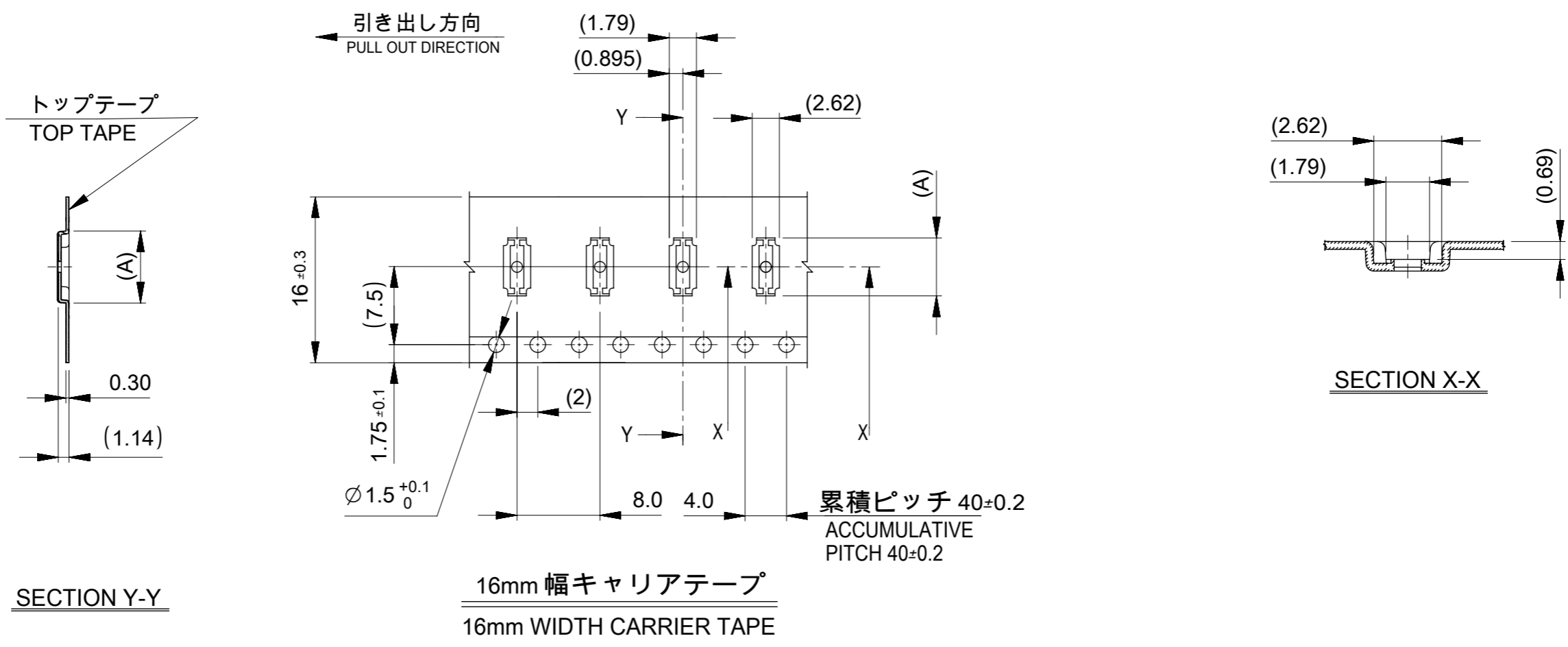


- カバーテープの剥離強度については、IEC-60286-3に準拠
COVER TAPE PEEL FORCE IS DEFINED BY IEC-60286-3.
- 材料 MATERIAL
キャリアテープ(CARRIER TAPE) : ポリスチレン(POLYSTYRENE)
トップテープ(TOP TAPE) : PET , OTHER
リール(REEL) : ポリスチレン(PS) (リサイクル材を含む)
POLYSTYRENE (PS) (RECYCLE MATERIAL CONTAINED)
- ELV 及び RoHS適合品
ELV AND RoHS COMPLIANT



THIS DRAWING CONTAINS INFORMATION THAT IS PROPRIETARY TO MOLEX ELECTRONIC TECHNOLOGIES, LLC AND SHOULD NOT BE USED WITHOUT WRITTEN PERMISSION

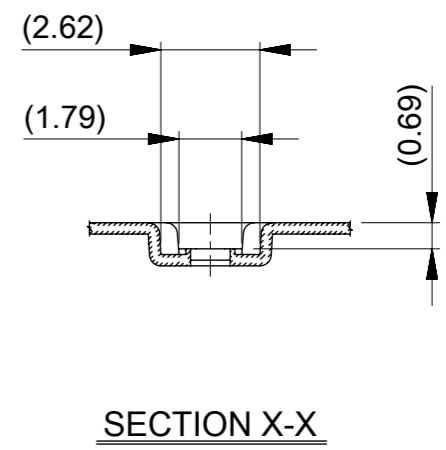
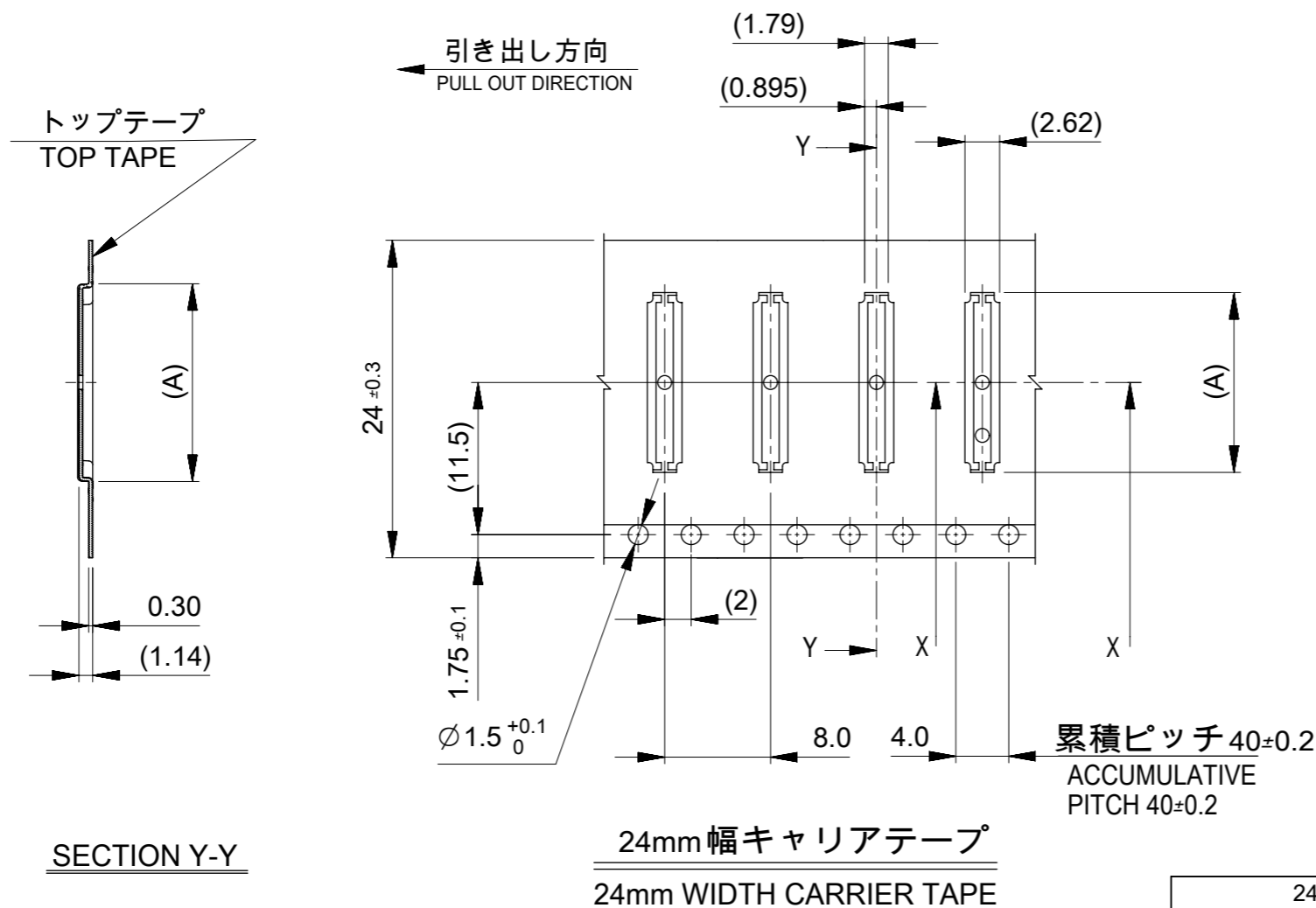
REVISED	EC NO: 111268	2016/11/24	GENERAL TOLERANCES (UNLESS SPECIFIED)	DIMENSION UNITS	SCALE	molex®				
	DRWN: RSHIBUYA01	2016/12/08	ANGULAR TOL ± 3.0 °	MM	1:1					0.4 BB CONN. HGT=0.7 PLUG ASSY EMBSTP PKG
	CHK'D: KTAKAHASHI	2016/12/11	4 PLACES ± 0.03	DRWN BY	DATE	PRODUCT CUSTOMER DRAWING				
	APPR: MSASAO		3 PLACES ± 0.03	TNISHIDA02	2016/02/24					SERIES
		2 PLACES ± 0.05	CHK'D BY	DATE	503308		GENERAL			
		1 PLACE ± 0.1	APPR BY	DATE						
		0 PLACES ± 0.2	KMORIKAWA	2016/02/29						
		DRAFT WHERE APPLICABLE MUST REMAIN WITHIN DIMENSIONS	DRAWING SIZE	THIRD ANGLE PROJECTION						
D	REV		A3				DOCUMENT NUMBER	DOC TYPE	DOC PART	SHEET NUMBER
							5033080000	PSD	000	1 OF 3



16	380	21.4	17.4	6.79	9000	503308-2652	26		
				6.39	9000	503308-2452	24		
				5.59	9000	503308-2052	20		
				5.19	9000	503308-1852	18		
				4.79	9000	503308-1652	16		
				3.99	9000	503308-1252	12		
キャリアテープ幅 CARRIER TAPE WIDTH			D	C	B	(A)	NUMBER OF CONNECTORS [PCS/REEL]	MATERIAL No. MODEL No.	CKT. 503308-**52

THIS DRAWING CONTAINS INFORMATION THAT IS PROPRIETARY TO MOLEX ELECTRONIC TECHNOLOGIES, LLC AND SHOULD NOT BE USED WITHOUT WRITTEN PERMISSION

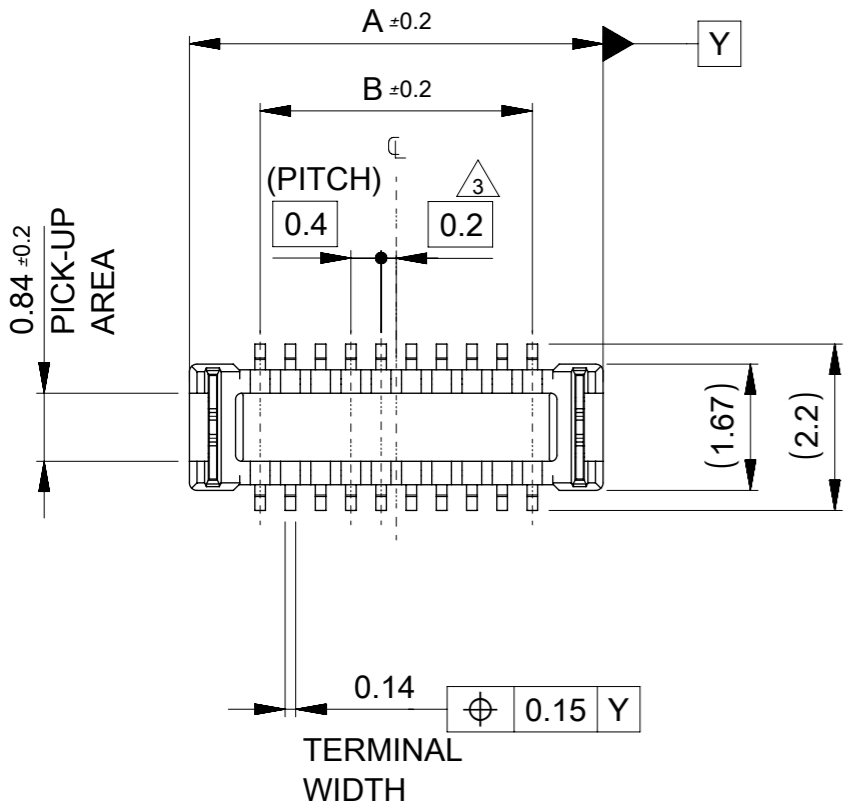
EC NO: 111268 DRWN: RSHIBUYA01 CHK'D: KTAKAHASHI APPR: MSASAO	2016/11/24 2016/12/08 2016/12/11	GENERAL TOLERANCES (UNLESS SPECIFIED) ANGULAR TOL ± 3.0 °	DIMENSION UNITS: MM SCALE: 1:1	
	4 PLACES ± 0.03 3 PLACES ± 0.03 2 PLACES ± 0.05 1 PLACE ± 0.1 0 PLACES ± 0.2	DRWN BY: TNISHIDA02 DATE: 2016/02/24	PRODUCT CUSTOMER DRAWING	
	DRAFT WHERE APPLICABLE MUST REMAIN WITHIN DIMENSIONS	CHK'D BY: TASAKAWA DATE: 2016/02/29	SERIES: 503308 MATERIAL NUMBER: [blank] CUSTOMER: GENERAL	
		APPR BY: KMORIKAWA DATE: 2016/02/29	DOCUMENT NUMBER: 5033080000 DOC TYPE: PSD DOC PART: 000 SHEET NUMBER: 2 OF 3	
		DRAWING SIZE: A3 THIRD ANGLE PROJECTION		



キャリアテープ幅 CARRIER TAPE WIDTH	D	C	B	(A)	NUMBER OF CONNECTORS [PCS/REEL]	MATERIAL No. MODEL No.	CKT.
24	380	29.4	25.4	7.59	9000	503308-3053	30
24	380	29.4	25.4	13.59	9000	503308-6052	60
				11.59	9000	503308-5052	50
				10.39	9000	503308-4452	44
				9.99	9000	503308-4252	42
				9.59	9000	503308-4052	40
				7.59	3000	503308-3052 Planned Obsolete	30
キャリアテープ幅 CARRIER TAPE WIDTH	D	C	B	(A)	NUMBER OF CONNECTORS [PCS/REEL]	MATERIAL No. MODEL No.	CKT.
24	380	29.4	25.4	7.59	9000	503308-3053	30

THIS DRAWING CONTAINS INFORMATION THAT IS PROPRIETARY TO MOLEX ELECTRONIC TECHNOLOGIES, LLC AND SHOULD NOT BE USED WITHOUT WRITTEN PERMISSION

EC NO: 111268 DRWN: RSHIBUYA01 CHK'D: KTAKAHASHI APPR: MSASAO	2016/11/24	GENERAL TOLERANCES (UNLESS SPECIFIED)		DIMENSION UNITS	SCALE		
	2016/12/08	ANGULAR TOL ± 3.0 °		MM	1:1		
	2016/12/11	4 PLACES ± 0.03	DRWN BY	TNISHIDA02	DATE		2016/02/24
		3 PLACES ± 0.03	CHK'D BY	TASAKAWA	DATE		2016/02/29
		2 PLACES ± 0.05	APPR BY	KMORIKAWA	DATE		2016/02/29
	1 PLACE ± 0.1	DRAFT WHERE APPLICABLE MUST REMAIN WITHIN DIMENSIONS		DRAWING SIZE	THIRD ANGLE PROJECTION	PRODUCT CUSTOMER DRAWING SERIES: 503308 MATERIAL NUMBER: 5033080000 CUSTOMER: GENERAL DOC TYPE: PSD DOC PART: 000 SHEET NUMBER: 3 OF 3	
	0 PLACES ± 0.2	A3					



注記 NOTES

1. 使用材料 MATERIAL

ハウジング : 液晶ポリマー(LCP) UL94V-0 (黒)
HOUSING: LIQUID CRYSTAL POLYMER UL94V-0 (COLOR: BLACK)

ターミナル : 銅合金
TERMINAL: COPPER ALLOY

金具 : 銅合金
FITTING NAIL: COPPER ALLOY

2. メッキ仕様 PLATING

ターミナル TERMINAL

コンタクト部: 部分金メッキ(0.1マイクロメートル以上)
CONTACT AREA: SEPARATED GOLD PLATING (0.1 MICROMETER MINIMUM)

テール部: 部分金メッキ
SOLDER TAIL AREA: SEPARATED GOLD PLATING

下地: ニッケルメッキ(1.0マイクロメートル以上)
UNDERPLATE: NICKEL OVERALL (1.0 MICROMETER MINIMUM)

※コンタクト部とテール部はニッケルメッキによって分断されている金メッキです。
DIVIDE INTO PARTS THE GOLD PLATING OF THE CONTACT AND THE TAIL PART BY THE NICKEL PLATING.

金具 FITTING NAIL

テール部: 錫メッキ(1.0マイクロメートル以上)
SOLDER TAIL AREA: TIN PLATING (1.0 MICROMETER MINIMUM)

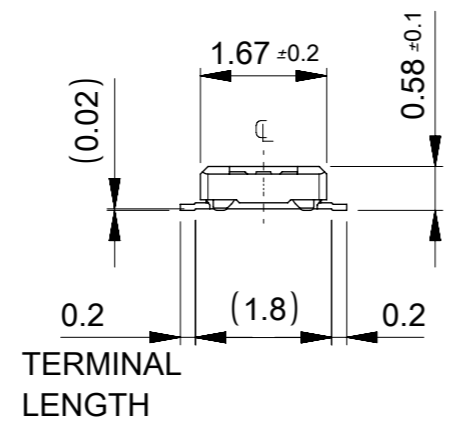
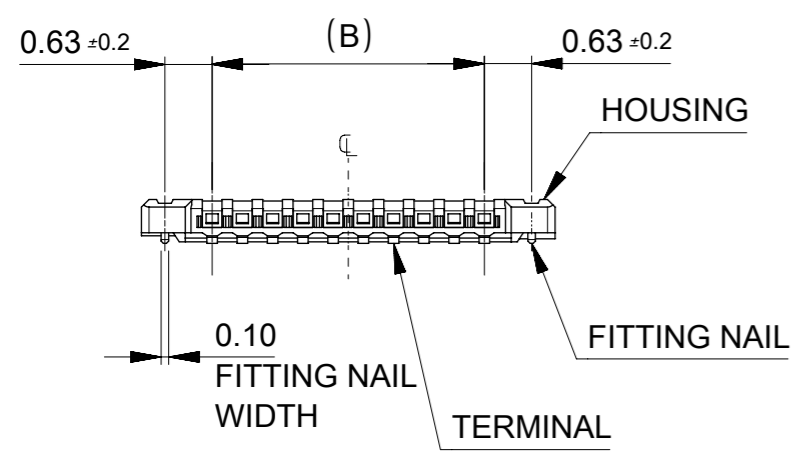
下地: ニッケルメッキ(1.0マイクロメートル以上)
UNDERPLATE: NICKEL OVERALL (1.0 MICROMETER MINIMUM)

△₃ (全極数/2)=偶数の場合に適用。
APPLY FOR (CIRCUIT/2)=EVEN.

4. 嵌合相手: 503304シリーズ
MATE WITH: 503304 SERIES.

5. テール及び金具の平坦度は、0.1以下
TAIL AND FITTING NAIL COPLANARITY TO BE 0.1 MAXIMUM.

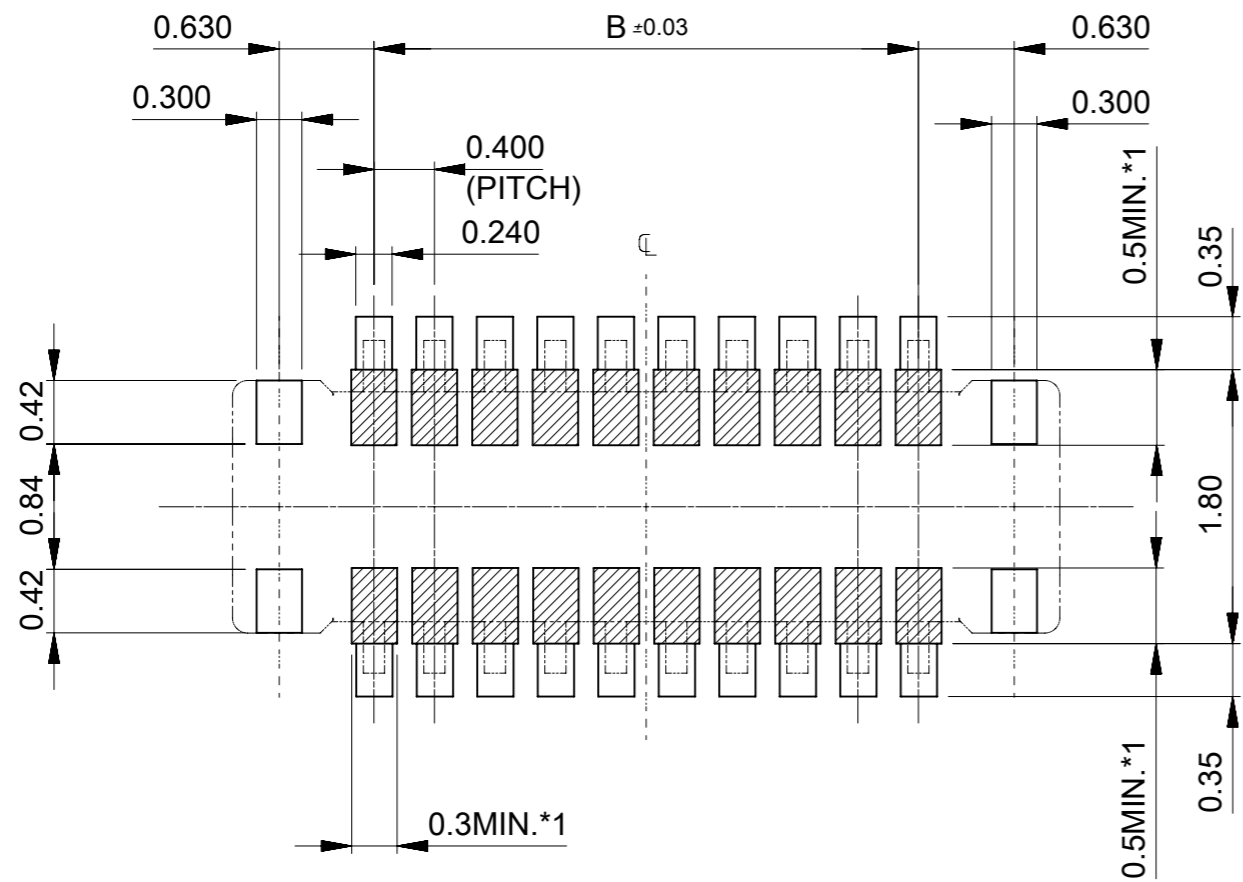
6. ELV及びRoHS適合品
ELV and RoHS COMPLIANT.



11.6	13.47	503308-6052	60
9.6	11.47	503308-5052	50
8.4	10.27	503308-4452	44
8.0	9.87	503308-4252	42
7.6	9.47	503308-4052	40
5.6	7.47	503308-3053	30
		503308-3052 Planned Obsolete(3000pcs/reel)	
4.8	6.67	503308-2652	26
4.4	6.27	503308-2452	24
3.6	5.47	503308-2052	20
3.2	5.07	503308-1852	18
2.8	4.67	503308-1652	16
2.0	3.87	503308-1252	12
B	A	EMBOSSED PACKAGE	極数 CIRCUITS
		オーダー番号 ORDER No.	
		CONNECTOR SERIES No.: 503308-**58	

THIS DRAWING CONTAINS INFORMATION THAT IS PROPRIETARY TO MOLEX ELECTRONIC TECHNOLOGIES, LLC AND SHOULD NOT BE USED WITHOUT WRITTEN PERMISSION

REVISED	2016/11/24	GENERAL TOLERANCES (UNLESS SPECIFIED)	DIMENSION UNITS	SCALE				
	2016/12/08		MM	10:1				
	2016/12/11		ANGULAR TOL ± 3.0 °	DRWN BY		DATE		
	4 PLACES ± 0.03		TNISHIDA02	2016/02/24				
	3 PLACES ± 0.03		CHK'D BY	DATE				
2 PLACES ± 0.05	TASAKAWA	2016/02/29						
1 PLACE ± 0.1	APPR BY	DATE	PRODUCT CUSTOMER DRAWING					
0 PLACES ± 0.2	KMORIKAWA	2016/02/29	SERIES	MATERIAL NUMBER	CUSTOMER			
DRAFT WHERE APPLICABLE MUST REMAIN WITHIN DIMENSIONS			DRAWING SIZE	THIRD ANGLE PROJECTION	503308	SEE CHART	GENERAL	
D	REV		A3		DOCUMENT NUMBER	DOC TYPE	DOC PART	SHEET NUMBER
					5033081000	PSD	000	1 OF 2



RECOMMENDED P.W.BOARD PATTERN LAYOUT(REFERENCE)

THICKNESS OF METAL MASK FOR REFERENCE : t=0.1mm
 OPEN APERTURE RATIO OF METAL MASK FOR REFERENCE : 100%

- *1 パターン引き回し、および半田禁止エリア
 (当該箇所においては、これと接する回路以外の配線を禁止する。
 また、接する回路を配線する場合はレジストを施し、この部分に
 半田は無きこととする。)
- *1 PROHIBITED AREA OF PATTERN WIRING AND SOLDER.
 (FOR EACH AREA, THE WIRING THAT TOUCHES ON THE SOLDER
 CAN BE ATTACHED, THEN COVERED WITH A FILM TO KEEP SOLDER OUT.)

THIS DRAWING CONTAINS INFORMATION THAT IS PROPRIETARY TO MOLEX ELECTRONIC TECHNOLOGIES, LLC AND SHOULD NOT BE USED WITHOUT WRITTEN PERMISSION

EC NO: 111268 DRWN: RSHIBUYA01 CHK'D: KTAKAHASHI APPR: MSASAO	2016/11/24 2016/12/08 2016/12/11	GENERAL TOLERANCES (UNLESS SPECIFIED)		DIMENSION UNITS MM	SCALE 10:1					
	ANGULAR TOL ± 3.0 °		DRWN BY TNISHIDA02	DATE 2016/02/24	0.4 BB CONN.HGT=0.7 W=2.6 PLUG ASS'Y					
	4 PLACES ± 0.03	3 PLACES ± 0.03	CHK'D BY TASAKAWA	DATE 2016/02/29					PRODUCT CUSTOMER DRAWING	
	2 PLACES ± 0.05	1 PLACE ± 0.1	APPR BY KMORIKAWA	DATE 2016/02/29	SERIES 503308	MATERIAL NUMBER SEE CHART	CUSTOMER GENERAL			
	0 PLACES ± 0.2	DRAFT WHERE APPLICABLE MUST REMAIN WITHIN DIMENSIONS		DRAWING SIZE A3	THIRD ANGLE PROJECTION 		DOCUMENT NUMBER 5033081000	DOC TYPE PSD	DOC PART 000	SHEET NUMBER 2 OF 2
	RELEASE STATUS P1 RELEASE DATE 11.12.2016 23:39:55									