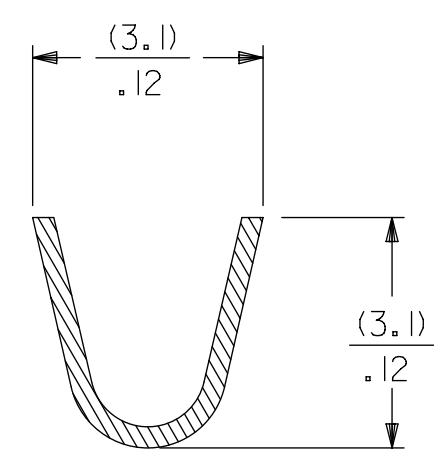
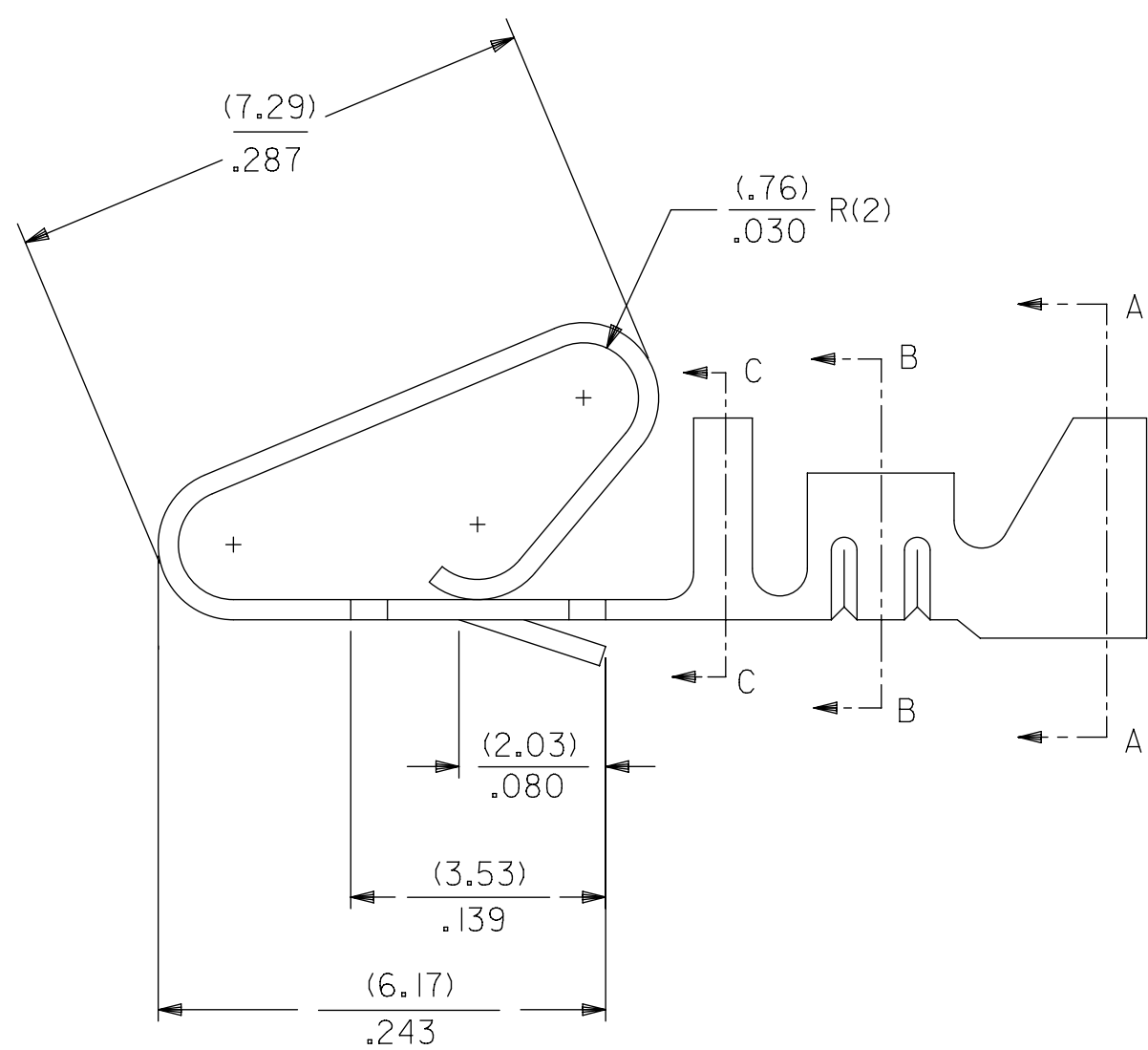
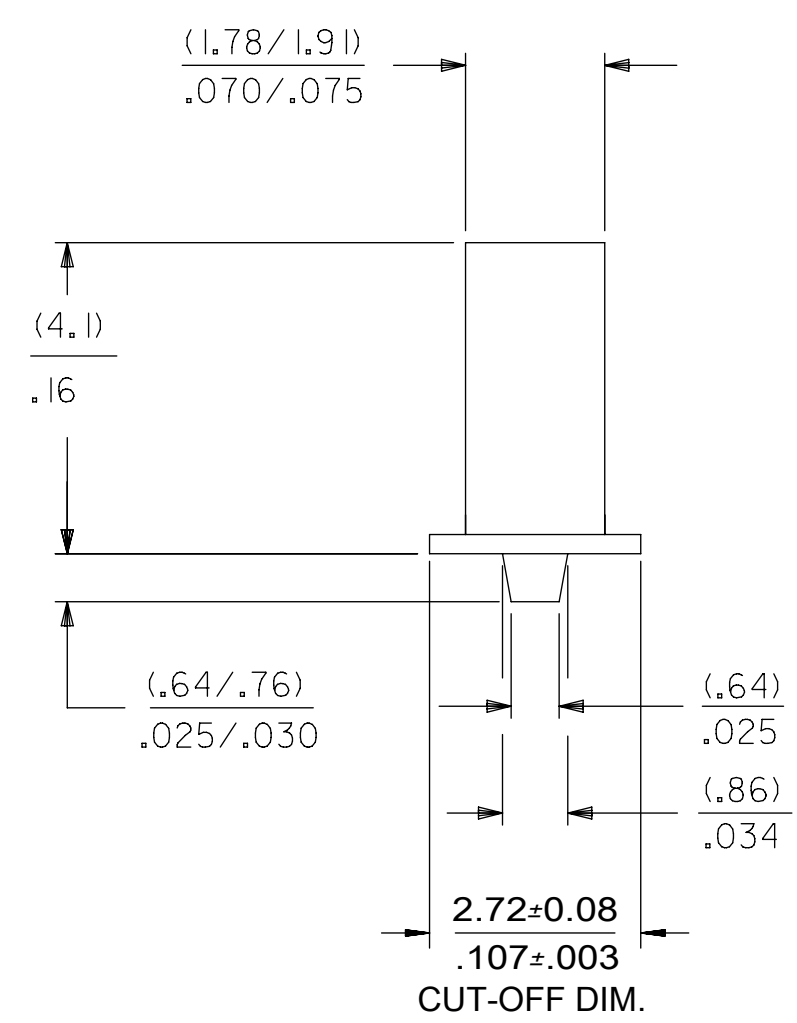
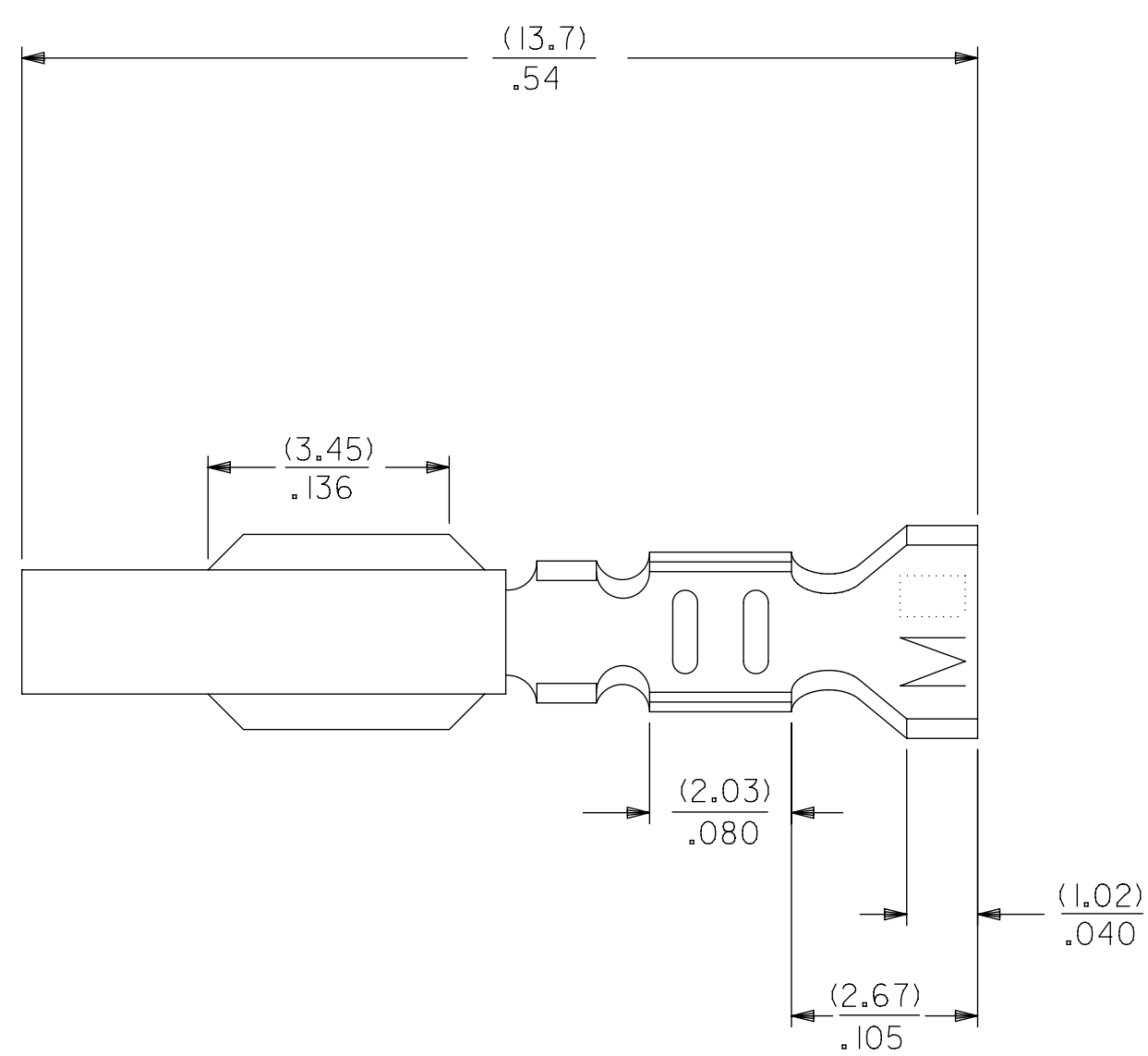
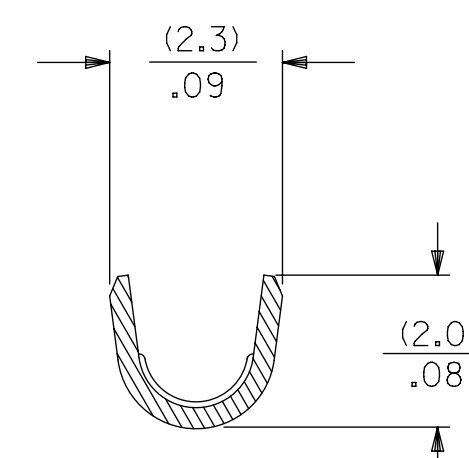


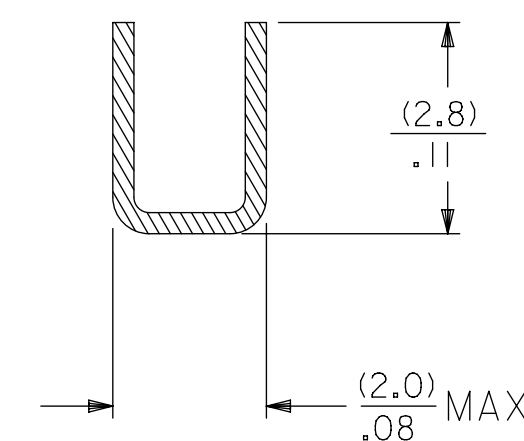
CHAIN FORM
SCALE 5:1



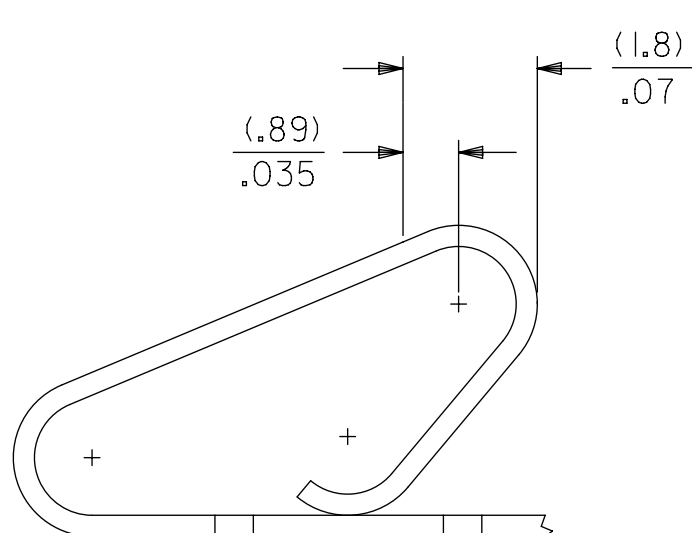
SECTION A-A



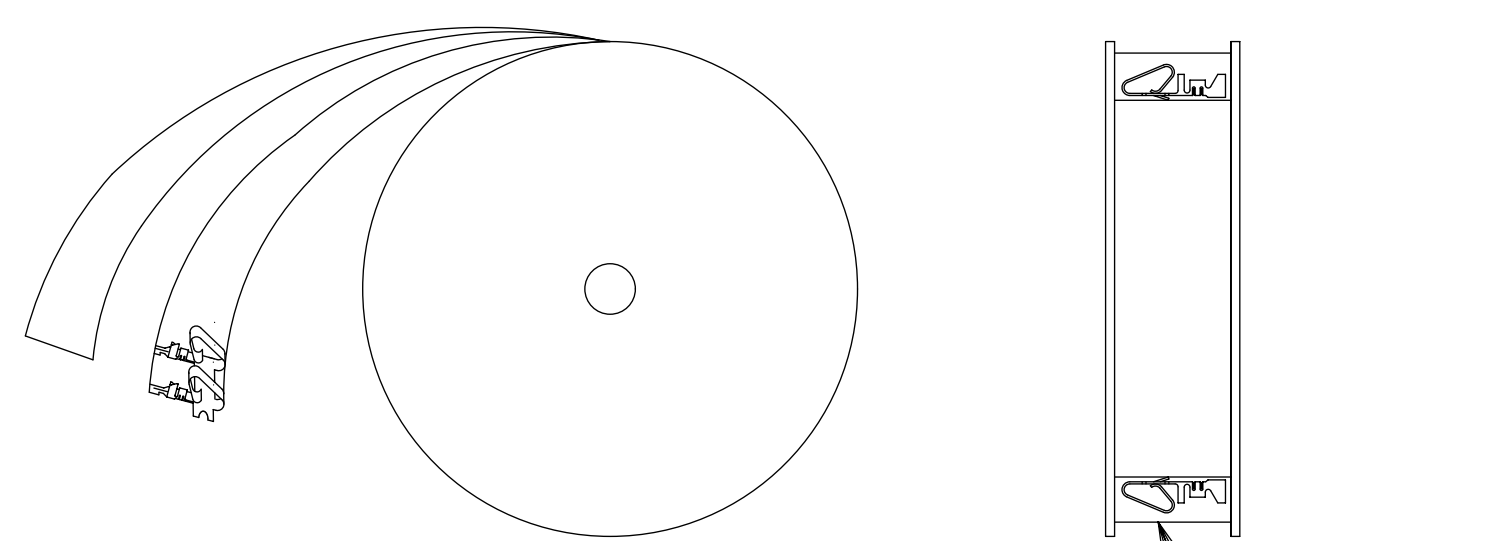
SECTION B-B



SECTION C-C



POST-PLATED SELECT GOLD LOCATION



WINDING DETAIL "B"

LEGEND

8818-* *-(*) *
 MATERIAL
 (.27)/.0106 THK.
 BLANK= BRASS
 A= PHOS BRONZE
 OPTION CODE
 BLANK=AS SHOWN
 WINDING SPEC
 BLANK=CHAIN, PER WINDING DETAIL "B"
 L=LOOSE
 PLATING
 SEE NOTE 2

EDP NO.	ENGINEERING NO.
	8818-(555)
	8818-(555)L
08-50-0008	8818-(P909)
08-50-0023	8818-(P909)L
40-01-1181	8818-(999)
40-01-1182	8818-A(999)
08-65-0128	8818-A(555)
08-65-0129	8818-A(555)L
08-52-0131	8818-A(P909)
08-52-0132	8818-A(P909)L
08-58-0135	8818-A(550)
08-58-0136	8818-A(550)L

- NOTES:
- MATERIAL: SEE LEGEND
 - FINISH:
 - (P909) OVERALL HOT TIN DIP: (0.00254)/.000100 MIN.
 - (550) SELECT GOLD: (0.00038)/.000015 MIN.
 - OVERALL GOLD FLASH: (0.00005)/.000002 MIN.
 - OVERALL NICKEL UNDERPLATE: (0.00076)/.000030 MIN.
 - (555) SELECT GOLD: (0.00038)/.000015 MIN.
 - OVERALL NICKEL UNDERPLATE: (0.00076)/.000030 MIN.
 - PRODUCT SPECIFICATION: PS-08-50
 - PACKAGING SPECIFICATION:
 - LOOSE TERMINALS: PER PK-2759-001
 - CHAIN FORM TERMINALS: PER PK-2759-002
 - CRIMP ACCEPTS 18-22 GA. WIRE WITH (2.79)/.110 MAX. INSULATION DIA.
 - DIMENSIONS GIVEN ACROSS CENTERLINES ARE SYMMETRICAL ABOUT THOSE CENTERLINES WITHIN HALF THE TOTAL TOLERANCE
 - TERMINAL FOR USE IN 41695 SERIES HOUSINGS
 - THIS PART CONFORMS TO CLASS B REQUIREMENTS OF COSMETIC SPECIFICATION PS-45499-002

THIS DRAWING CONTAINS INFORMATION THAT IS PROPRIETARY TO MOLEX ELECTRONIC TECHNOLOGIES, LLC AND SHOULD NOT BE USED WITHOUT WRITTEN PERMISSION									
SYMBOLS		DIMENSION UNITS		SCALE		CURRENT REV DESC: NOTE 4 UPDATED			
▽ = 0	MM/IN	1:1		EC NO: 605479 DRWN: SS06 2018/09/12 CHK'D: ISHWARG 2018/10/05 APPR: ISHWARG 2018/10/05 INITIAL REVISION: DRWN: JJS 1993/02/02 APPR: LENZ 1993/02/02					
▽ = 0	GENERAL TOLERANCES (UNLESS SPECIFIED)								
▽ = 0		MM	INCH						
▽ = 0	4 PLACES	±	±						
▽ = 0	3 PLACES	±	± 0.01						
▽ = 0	2 PLACES	± 0.25	± 0.014						
▽ = 0	1 PLACE	± 0.36	±						
▽ = 0	0 PLACES	±	±						
▽ = 0	ANGULAR TOL ± 0.5°			DRAFT WHERE APPLICABLE MUST REMAIN WITHIN DIMENSIONS THIRD ANGLE PROJECTION DRAWING SERIES D-SIZE 8818					
DOCUMENT NUMBER		DOC TYPE		DOC PART		REVISION			
SD-8818		PSD		001		H2			
MATERIAL NUMBER		CUSTOMER		SHEET NUMBER					
SEE CHART		GENERAL MARKET		1 OF 1					