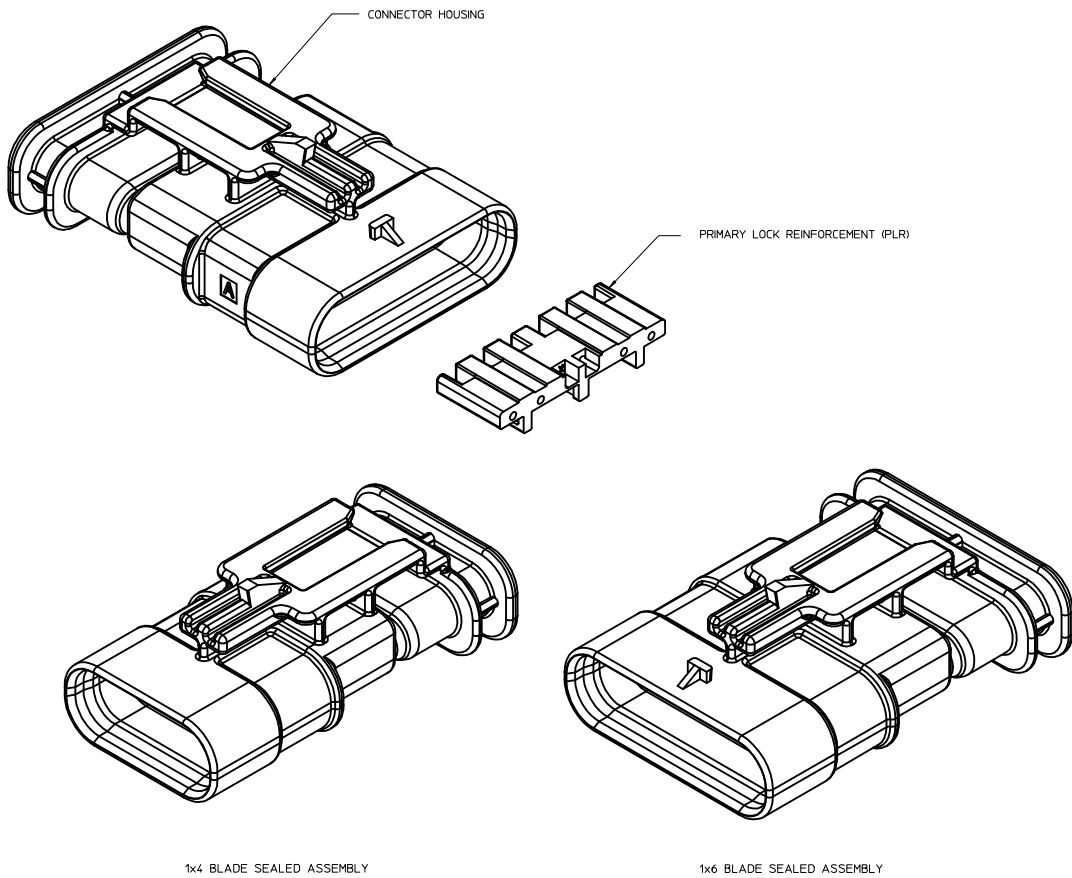


**TABLE OF CONTENTS**

SHEET NO.	SHEET DESCRIPTION
1	NOTES
2	1x4 BLADE SEALED ASSEMBLY KEYING CONFIGURATIONS
3	1x6 BLADE SEALED ASSEMBLY KEYING CONFIGURATIONS
4	CLIP SLOT CONFIGURATIONS
5	BLADE SEALED ASSEMBLY
6	CONNECTION SYSTEM PACKAGING
7	WIRE DRESS COVER INTERFACE OPTIONS
8	1x4 BLADE SEALED ASSEMBLY BOM INTERFACE OPTION 1
9	1x4 BLADE SEALED ASSEMBLY BOM INTERFACE OPTION 2
10	1x6 BLADE SEALED ASSEMBLY BOM INTERFACE OPTION 1
11	1x6 BLADE SEALED ASSEMBLY BOM INTERFACE OPTION 2



NOTES: VALID UNLESS OTHERWISE SPECIFIED

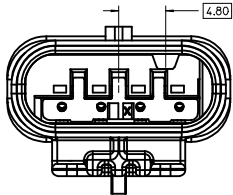
1. GENERAL:
  - a. APPLICATION SPECIFICATION SEE: AS-34900-0001  
CONTAINS: PRODUCT INTRODUCTION, PRODUCT SUMMARY, CONNECTOR ASSEMBLY, PACKAGING INFORMATION, CONNECTOR MATING, SERVICE INSTRUCTIONS, ELECTRICAL CONTINUITY CHECKING, CRIMPING, AND TROUBLESHOOTING.
  - b. PRODUCT SPECIFICATION SEE: PS-34900-0001  
CONTAINS: PRODUCT INTRODUCTION, PRODUCT SUMMARY, RATINGS (CURRENT, TEMPERATURE, SEALING, AND FLAMMABILITY), AND PRODUCT VALIDATION.
  - c. PACKAGING SPECIFICATION PER MOLEX DRAWING: PK-31301-898
  - d. PARTS MUST BE IN COMPLIANCE TO MOLEX CHEMICAL SUBSTANCES FOR PRODUCTS AND PACKAGING SPECIFICATION: QEHS-699000-301
  - e. DATA MUST BE SUBMITTED UNDER THE MOLEX PART NUMBER TO IMDS (COMPANY ID#13255)
2. DESIGN - MATERIALS:
  - a. SEE BOM TABLE
3. DESIGN - GEOMETRY:
  - a. THIS IS A 100% CAD GENERATED PART. THE CAD MATHEMATICAL DATA IS THE MASTER FOR THIS PART. FOR DIMENSIONAL OR ANY INFORMATION NOT SHOWN ON THIS DRAWING, ANALYZE THE CAD MODEL.
  - b. GEOMETRIC DIMENSIONS AND TOLERANCES PER ASME Y14.5M - 1994
  - c. EDGES AND UNDIMENSIONED DETAILS PER ISO13715
  - d. CORNERS SHOWN AS SHARP TO BE R 0.2 MAX.
  - e. LETTERING SHALL BE 0.15 MAX RAISED IN 0.25 MAX RECESS PAD. THIS INCLUDES RECYCLING CODE, CAVITY ID, VENDOR IDENTIFICATION, AND CUSTOMER MATERIAL NUMBER.
  - f. VISUAL DEFECTS SHALL MEET COSMETIC STANDARD PS-45499-002 (Class B)
- g. LASER MARKING:
  1. PART NUMBER
  2. DAY OF THE YEAR
  3. SHIFT
  4. YEAR

INSPECTION BALLOON NUMBER LOG  
 PER DRAWING REVISION: B12  
 LAST BALLOON NUMBER USED: WDC2-10  
 ADDED BALLOON NUMBERS: WDC2-1 - WDC2-10  
 REMOVED BALLOON NUMBERS:

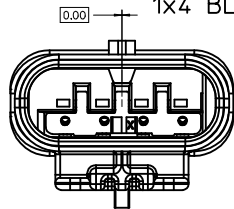
ENTER DESCRIPTION EC NO: UAU2016-1803 DRAWN: KOWALSKI CHKD: APPR: KOWALSKI DATE: 2016/06/01 2016/06/15 B15	QUALITY SYMBOLS ∇=0 ∇=0 ∇=0	GENERAL TOLERANCES (UNLESS SPECIFIED): mm INCH 4 PLACES ±--- ±--- 3 PLACES ±--- ±--- 2 PLACES ±0.10 ±--- 1 PLACE ±0.20 ±--- 0 PLACE ±0.50 ±--- ANGULAR ± 3 ° DRAFT WHERE APPLICABLE MUST REMAIN WITHIN DIMENSIONS	DIMENSION STYLE MM ONLY DRAWN BY: MYANSLAMBROU DATE: 2012/07/13 CHECKED BY: YKOSHY DATE: 2012/07/19 APPROVED BY: YKOSHY DATE: 2012/07/124	SCALE: 4:1 DESIGN UNITS: METRIC THIRD ANGLE PROJECTION	TITLE: 12MM 1X4, 1X6 BLADE SEALED ASSEMBLY CABLE SEAL <b>molex</b> DOCUMENT NO.: SD-34899-6001 SHEET NO.: 1 OF 11
	THIS DRAWING CONTAINS INFORMATION THAT IS PROPRIETARY TO MOLEX INCORPORATED AND SHOULD NOT BE USED WITHOUT WRITTEN PERMISSION				
	REV DESCRIPTION				
	REV B15				

B15	UPDATED BALLOONS 2-1 & 2-2 ON SHEET 7
B14	UPDATED PARTS TO SALEABLE
B13	RELEASED PRIMARY KEYS NON-SIR SALEABLE
B12	UPDATED PLR LOCK UP GEOMETRY
B11	UPDATED WDC INTERFACE PART# TO TOOLED BUT NOT VALIDATED
B10	UPDATED TOLERANCES WDC FEATURES
B9	1X4, 1X6 PART # WIRE DRESS COVER INTERFACE FEATURES OK TO TOOL
B8	1X4 40G CLIP-SLOT OK TO TOOL
B7	1X4 PART # UPDATED TO 'TOOLED BUT NOT VALIDATED'
B6	ADDED 40G CLIP-SLOT PART NUMBERS
B5	BOM CORRECTIONS AND UPDATES
B4	BOM CORRECTIONS AND UPDATES
B3	1x4, 1x6 NON-SIR PART# OK TO TOOL
B2	1x6 11mm CLIP SLOT PART # OK TO TOOL
B1	1x6 11mm CLIP SLOT PART NUMBERS ADDED
B	ADDED 1x4 INFORMATION
A	OK TO TOOL

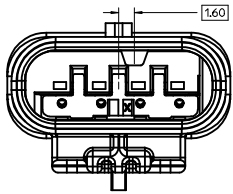
1x4 BLADE SEALED ASSEMBLY KEYING CONFIGURATIONS. FOR PART NUMBERS REFER TO BOM SHEET.



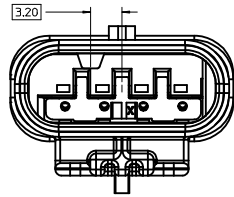
KEYING OPTION A



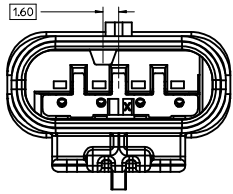
KEYING OPTION F



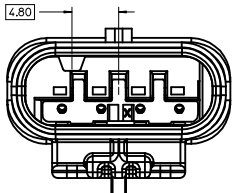
KEYING OPTION B



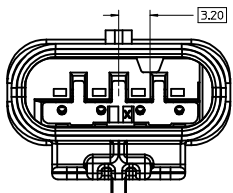
KEYING OPTION G



KEYING OPTION C



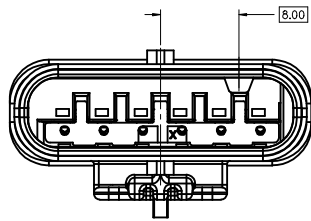
KEYING OPTION D



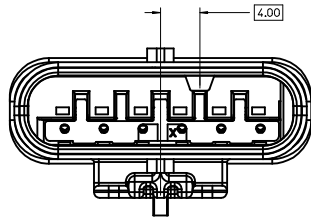
KEYING OPTION E

<b>ENTER DESCRIPTION</b> EC NO: UAU2016-1803 DRAWN: KOWALSKI 2016/06/01 CHKD: CHYD APPR: KOJEKSKI 2016/06/15 REVISIONS 1 2 3 4 5 6 7 8 9 10 11 12 13 14 15 16 17 18 19 20	QUALITY SYMBOLS ▽=0 ▽=0 ▽=0	GENERAL TOLERANCES (UNLESS SPECIFIED) mm INCH 4 PLACES ± --- ± --- 3 PLACES ± --- ± --- 2 PLACES ± 0.10 ± --- 1 PLACE ± 0.20 ± --- 0 PLACE ± 0.50 ± --- ANGULAR ± 3 ° DRAFT WHERE APPLICABLE MUST REMAIN WITHIN DIMENSIONS	DIMENSION STYLE MM ONLY DRAWN BY DATE MYANSLAMBROU 2012/07/13 CHECKED BY DATE VKOSHY 2012/07/19 APPROVED BY DATE VKOSHY 2012/07/24 MATERIAL NO. SEE BOM	SCALE 4:1 DESIGN UNITS METRIC THIRD ANGLE PROJECTION TITLE 1.2MM 1X4, 1X6 BLADE SEALED ASSEMBLY CABLE SEAL molex DOCUMENT NO. SD-34899-6001	SHEET NO. 2 OF 11
	THIS DRAWING CONTAINS INFORMATION THAT IS PROPRIETARY TO MOLEX INCORPORATED AND SHOULD NOT BE USED WITHOUT WRITTEN PERMISSION				
	SIZE D				
	INCORPORATED AND SHOULD NOT BE USED WITHOUT WRITTEN PERMISSION				

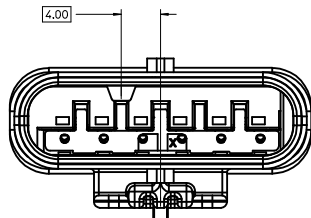
1x6 BLADE SEALED ASSEMBLY KEYING CONFIGURATIONS. FOR PART NUMBERS REFER TO BOM SHEET.



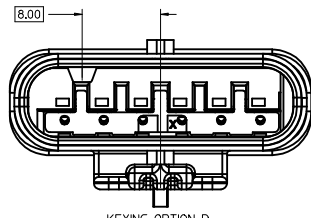
KEYING OPTION A



KEYING OPTION B



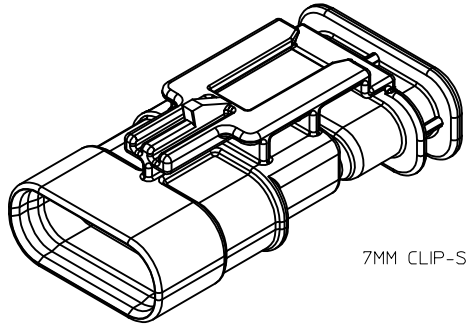
KEYING OPTION C



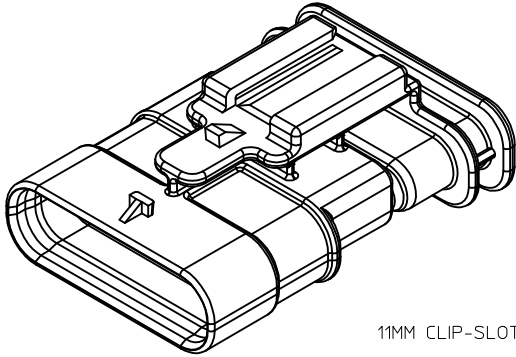
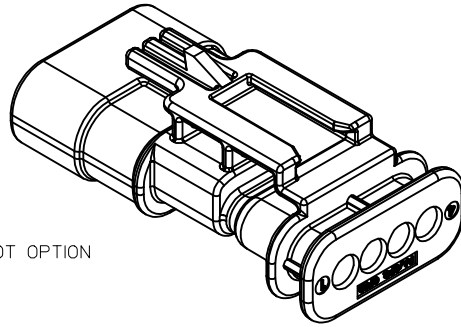
KEYING OPTION D

<b>ENTER DESCRIPTION</b> EC NO: UAU2016-1803 DRAWN: KOKOMALSKY 2016/06/07 CHKD: CHYD APPR: KOKOSKI 2016/06/15 REV: DESCRIPTION	QUALITY SYMBOLS ▽=0 ▽=0 ▽=0		GENERAL TOLERANCES (UNLESS SPECIFIED) mm INCH 4 PLACES ± --- ± --- 3 PLACES ± --- ± --- 2 PLACES ± 0.10 ± --- 1 PLACE ± 0.20 ± --- 0 PLACE ± 0.50 ±		DIMENSION STYLE MM ONLY		SCALE 4:1	DESIGN UNITS METRIC	THIRD ANGLE PROJECTION
	DRAFT WHERE APPLICABLE MUST REMAIN WITHIN DIMENSIONS		ANGULAR ± 3 °		DRAWN BY DATE MYANSLAMBROU 2012/07/13		TITLE 12MM 1X4, 1X6 BLADE SEALED ASSEMBLY CABLE SEAL		
	MATERIAL NO. SEE BOM		APPROVED BY DATE VKOSHY 2012/07/19		APPROVED BY DATE VKOSHY 2012/07/24		DOCUMENT NO. SD-34899-6001		
	SIZE D		THIS DRAWING CONTAINS INFORMATION THAT IS PROPRIETARY TO MOLEX INCORPORATED AND SHOULD NOT BE USED WITHOUT WRITTEN PERMISSION						

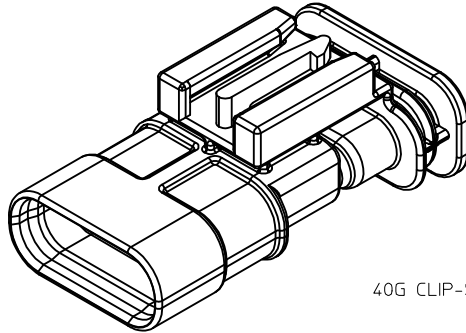
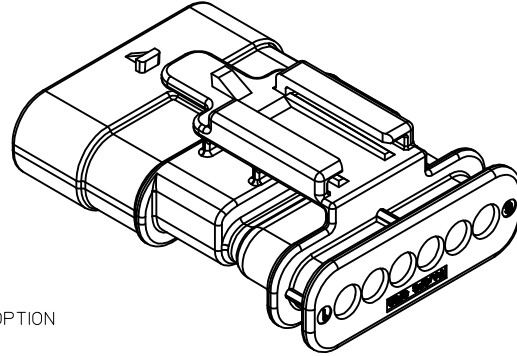
CLIP-SLOT CONFIGURATIONS. FOR PART NUMBERS REFER TO BOM SHEET.



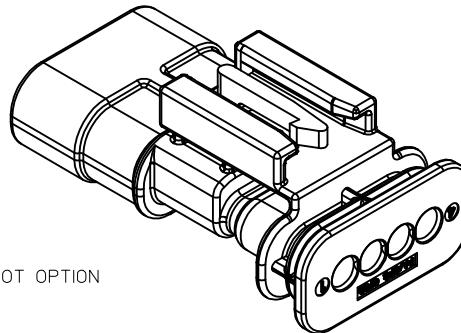
7MM CLIP-SLOT OPTION



11MM CLIP-SLOT OPTION

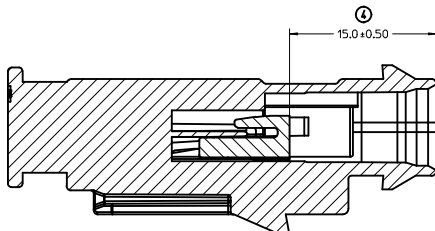
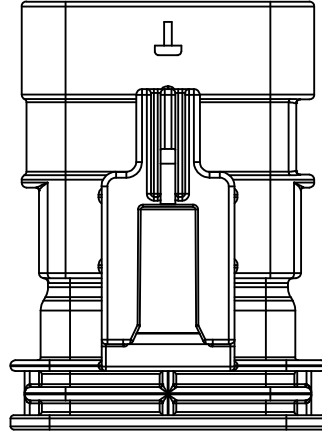
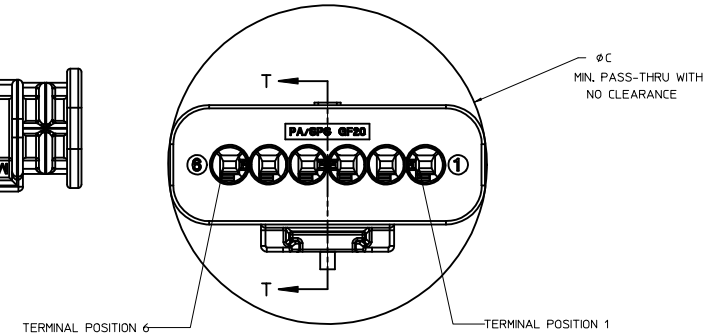
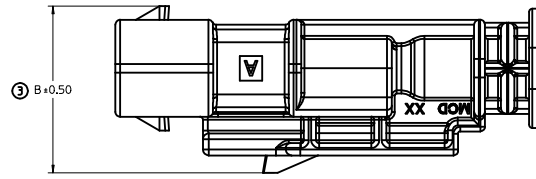
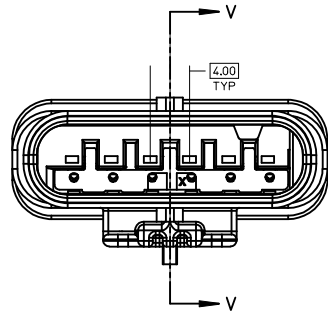
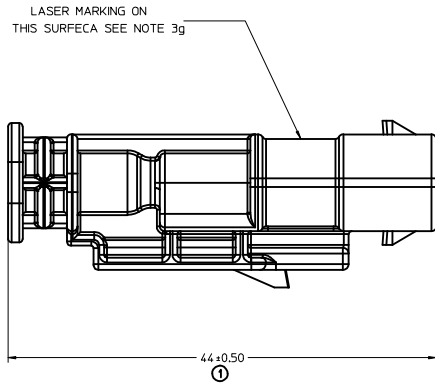


40G CLIP-SLOT OPTION

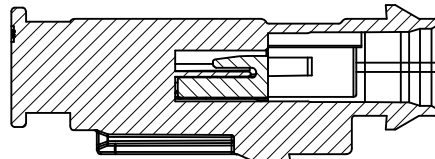


ENTER DESCRIPTION EC NO: UAU2016-1803 DRAWN/KOMALSKY 2016/06/01 CHKD: APPR:KIEKOSKI 2016/06/15 REV:	QUALITY SYMBOLS	GENERAL TOLERANCES (UNLESS SPECIFIED)		DIMENSION STYLE	SCALE	DESIGN UNITS	THIRD ANGLE PROJECTION
	▽=0	mm	INCH	MM ONLY	4:1	METRIC	TITLE 12MM 1X4, 1X6 BLADE SEALED ASSEMBLY CABLE SEAL
	▽=0	4 PLACES ± ---	± ---	DRAWN BY	DATE		DOCUMENT NO. SD-34899-6001
	▽=0	3 PLACES ± ---	± ---	MYANSLAMBROU	2012/07/13		
▽=0	2 PLACES ± 0.10	± ---	CHECKED BY	DATE			
	1 PLACE ± 0.20	± ---	VKOSHY	2012/07/19			
	0 PLACE ± 0.50	±	APPROVED BY	DATE			
			VKOSHY	2012/07/24			
		ANGULAR ± 3 °					
		DRAFT WHERE APPLICABLE MUST REMAIN WITHIN DIMENSIONS		SEE BOM			
				SIZE D			
				THIS DRAWING CONTAINS INFORMATION THAT IS PROPRIETARY TO MOLEX INCORPORATED AND SHOULD NOT BE USED WITHOUT WRITTEN PERMISSION			

BLADE SEALED ASSEMBLY



SECTION V-V



SECTION T-T

PRIMARY LOCK REINFORCEMENT (PLR) SHOWN IN THE PRE-STAGED POSITION

PRIMARY LOCK REINFORCEMENT (PLR) SHOWN IN THE FINAL-LOCK POSITION

1x6 BLADE SEALED ASSEMBLY, 40G CLIP SLOT	17.5	32.75
1x6 BLADE SEALED ASSEMBLY, 11mm CLIP SLOT	16	32.75
1x6 BLADE SEALED ASSEMBLY, 7mm CLIP SLOT	17.25	32.75
1x4 BLADE SEALED ASSEMBLY, 40G CLIP SLOT	17.5	25.25
1x4 BLADE SEALED ASSEMBLY, 11mm CLIP SLOT	16	24.75
1x4 BLADE SEALED ASSEMBLY, 7mm CLIP SLOT	17.25	24.75
CONFIGURATION	B	C

CHARTED DIMENSIONS

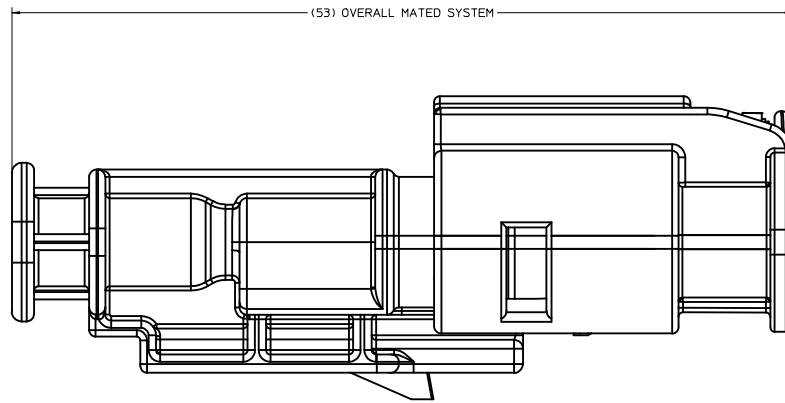
<b>ENTER DESCRIPTION</b> EC NO. UAU2016-1803 DRAWN: KOKALSKY 2016/06/01 CHKD: APPR: KOKOSKI 2016/06/15	<b>QUALITY SYMBOLS</b> ∇=0 ∇=0 ∇=0	<b>GENERAL TOLERANCES (UNLESS SPECIFIED)</b>		<b>DIMENSION STYLE</b> MM ONLY	SCALE 4:1	DESIGN UNITS METRIC	THIRD ANGLE PROJECTION
		4 PLACES ± --- mm ± --- INCH 3 PLACES ± --- mm ± --- INCH 2 PLACES ± 0.10 mm ± --- INCH 1 PLACE ± 0.20 mm ± --- INCH 0 PLACE ± 0.50 mm ± --- INCH	ANGULAR ± 3 ° DRAFT WHERE APPLICABLE MUST REMAIN WITHIN DIMENSIONS	DRAWN BY MYANSLAMBROU 2012/07/13 CHECKED BY VKOSHY 2012/07/19 APPROVED BY VKOSHY 2012/07/24	DATE DATE DATE	MATERIAL NO. SEE BOM	DOCUMENT NO. SD-34899-6001

12MM 1X4, 1X6 BLADE SEALED ASSEMBLY CABLE SEAL

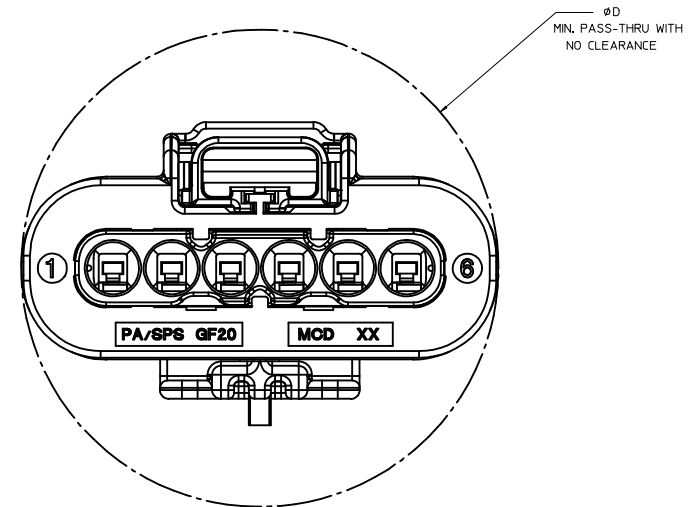
**molex**

THIS DRAWING CONTAINS INFORMATION THAT IS PROPRIETARY TO MOLEX INCORPORATED AND SHOULD NOT BE USED WITHOUT WRITTEN PERMISSION

CONNECTION SYSTEM PACKAGING



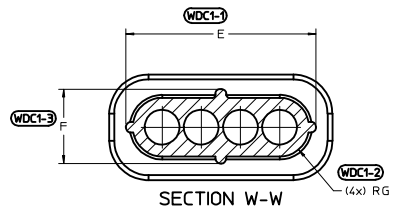
MODEL USED 'AM-120-S-006-1-Z01'



1x6 RECEPTACLE MATED TO 1x6 BLADE, 40 CLIP SLOT	TBD
1x6 RECEPTACLE MATED TO 1x6 BLADE, 11mm CLIP SLOT	33.5
1x6 RECEPTACLE MATED TO 1x6 BLADE, 7mm CLIP SLOT	33.5
1x4 RECEPTACLE MATED TO 1x4 BLADE, 40G CLIP SLOT	25.50
1x4 RECEPTACLE MATED TO 1x4 BLADE, 11mm CLIP SLOT	25.50
1x4 RECEPTACLE MATED TO 1x4 BLADE, 7mm CLIP SLOT	25.50
1.2mm CONNECTION SYSTEM CONFIGURATION	D

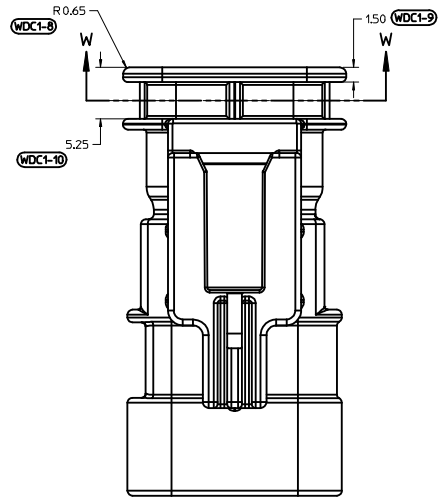
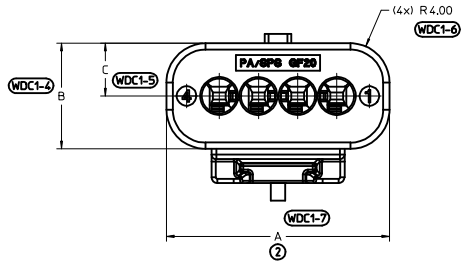
CHARTED DIMENSIONS

<b>ENTER DESCRIPTION</b> EC NO: UAU2016-1803 DRAWN BY: DR WIKOMALSKY 2016/06/01 CHKD: CHYD APPR: KOEKOGLI 2016/06/15 REV: DESCRIPTION	QUALITY SYMBOLS	GENERAL TOLERANCES (UNLESS SPECIFIED)	DIMENSION STYLE	SCALE	DESIGN UNITS	THIRD ANGLE PROJECTION
	▽=0	mm INCH	MM ONLY	6:1	METRIC	☉
	▽=0	4 PLACES ± --- ± ---	DRAWN BY: MYANSLAMBROU 2012/07/13	DATE	TITLE	12MM 1X4, 1X6 BLADE SEALED ASSEMBLY CABLE SEAL
	▽=0	3 PLACES ± 0.10 ± ---	CHECKED BY: VKOSHY 2012/07/19	DATE		
		2 PLACES ± 0.20 ± ---	APPROVED BY: VKOSHY 2012/07/24	DATE		
		1 PLACE ± 0.50 ±				
		0 PLACE ± 0.50 ±				
		ANGULAR ± 3 °	MATERIAL NO. SEE BOM	DOCUMENT NO. SD-34899-6001	SHEET NO. 6 OF 11	
		DRAFT WHERE APPLICABLE MUST REMAIN WITHIN DIMENSIONS	SIZE D	THIS DRAWING CONTAINS INFORMATION THAT IS PROPRIETARY TO MOLEX INCORPORATED AND SHOULD NOT BE USED WITHOUT WRITTEN PERMISSION		

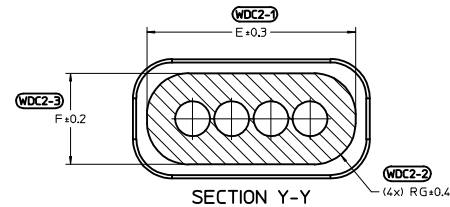


6 CIRCUIT	30.8	10.8	5.4	27.4	7.6	3.0
4 CIRCUIT	22.8	10.8	5.4	19.4	7.6	3.0
CONFIGURATION	A	B	C	E	F	G

CHARTED DIMENSIONS

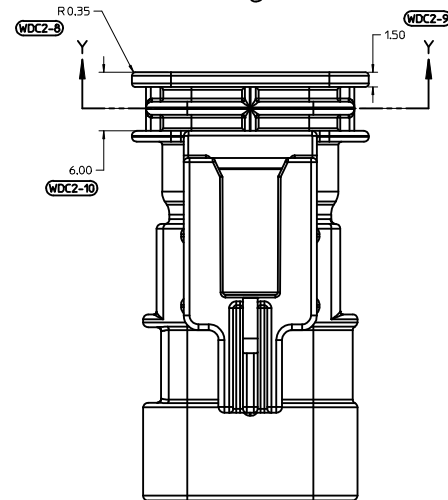
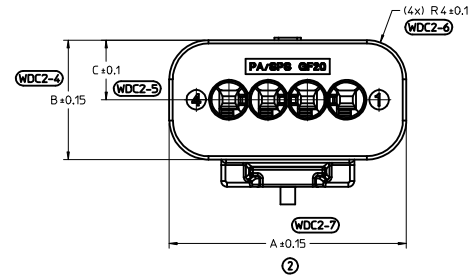


WIRE DRESS COVER  
INTERFACE OPTION 1  
WIRE DRESS COVERS  
NOT AVAILABLE



6 CIRCUIT	32.2	12.2	6.1	29.3	9.3	4.2
4 CIRCUIT	24.2	12.2	6.1	21.3	9.3	4.2
CONFIGURATION	A	B	C	E	F	G

CHARTED DIMENSIONS



WIRE DRESS COVER  
INTERFACE OPTION 2  
BASED ON HIRSCHMANN INTERFACE  
DRAWING 808-012-xxx REV B5

<b>ENTER DESCRIPTION</b> EC NO. UAU2016-1803 DRAWN BY: KOWALSKI CHKD: APPR: KOWALSKI DATE: 2016/06/15	<b>QUALITY SYMBOLS</b> ∇=0 ∇=0 ∇=0	<b>GENERAL TOLERANCES (UNLESS SPECIFIED)</b>		<b>DIMENSION STYLE</b> MM ONLY	<b>SCALE</b> 4:1	<b>DESIGN UNITS</b> METRIC	THIRD ANGLE PROJECTION					
		4 PLACES ± 0.10 ± 0.10	3 PLACES ± 0.20 ± 0.20	2 PLACES ± 0.50 ± 0.50	1 PLACE ± 0.20 ± 0.20	0 PLACE ± 0.50 ± 0.50	ANGLULAR ± 3.0	DRAFT WHERE APPLICABLE MUST REMAIN WITHIN DIMENSIONS	DRAWN BY: MYANSLAMBROU DATE: 2012/07/13	CHECKED BY: VKOSHY DATE: 2012/07/19	APPROVED BY: VKOSHY DATE: 2012/07/24	TITLE: 12MM 1X4, 1X6 BLADE SEALED ASSEMBLY CABLE SEAL
		MATERIAL NO. SEE TABLE		DOCUMENT NO. SD-34899-6001		SHEET NO. 7 OF 11		<b>molex</b>				
		THIS DRAWING CONTAINS INFORMATION THAT IS PROPRIETARY TO MOLEX INCORPORATED AND SHOULD NOT BE USED WITHOUT WRITTEN PERMISSION										









1x6 BLADE SEALED ASSEMBLY BOM  
FOR WIRE DRESS COVER INTERFACE 2  
REFER WIRE DRESS INTERFACE SHEET  
FOR DETAILS

KEYING OPTION D, 11mm CLIP SLOT, STONE GRAY	34899-6123																			D			SALEABLE				
KEYING OPTION C, 11mm CLIP SLOT, DARK GRAY	34899-6122																				C			SALEABLE			
KEYING OPTION B, 11mm CLIP SLOT, LIGHT GRAY	34899-6121																					A		SALEABLE			
KEYING OPTION A, 11mm CLIP SLOT, BLACK	34899-6120																					B		SALEABLE			
KEYING OPTION D, 11mm CLIP SLOT, YELLOW	34899-6113																							SALEABLE			
KEYING OPTION C, 11mm CLIP SLOT, YELLOW	34899-6112																							SALEABLE			
KEYING OPTION B, 11mm CLIP SLOT, YELLOW	34899-6111																							SALEABLE			
KEYING OPTION A, 11mm CLIP SLOT, YELLOW	34899-6110																							SALEABLE			
KEYING OPTION D, 7mm CLIP SLOT, STONE GRAY	34899-6093																							SALEABLE			
KEYING OPTION C, 7mm CLIP SLOT, DARK GRAY	34899-6092																							SALEABLE			
KEYING OPTION B, 7mm CLIP SLOT, LIGHT GRAY	34899-6091																							SALEABLE			
KEYING OPTION A, 7mm CLIP SLOT, BLACK	34899-6090																							SALEABLE			
KEYING OPTION D, 7mm CLIP SLOT, YELLOW	34899-6083																							SALEABLE			
KEYING OPTION C, 7mm CLIP SLOT, YELLOW	34899-6082																							SALEABLE			
KEYING OPTION B, 7mm CLIP SLOT, YELLOW	34899-6081																							SALEABLE			
KEYING OPTION A, 7mm CLIP SLOT, YELLOW	34899-6080	A																						SALEABLE			
ASSEMBLY DESCRIPTION	ASSEMBLY PART NUMBER																									PRODUCTION TOOL STATUS	COMMENTS

PLR			NATURAL	SPS/NYLON GF20
1x6 CONNECTOR HOUSING, KEYING OPTION D 11mm CLIP SLOT	STONE GRAY		DARK GRAY	SPS/NYLON GF20
1x6 CONNECTOR HOUSING, KEYING OPTION C 11mm CLIP SLOT	DARK GRAY		LIGHT GRAY	SPS/NYLON GF20
1x6 CONNECTOR HOUSING, KEYING OPTION B 11mm CLIP SLOT	LIGHT GRAY		BLACK	SPS/NYLON GF20
1x6 CONNECTOR HOUSING, KEYING OPTION A 11mm CLIP SLOT	BLACK		YELLOW	SPS/NYLON GF20
1x6 CONNECTOR HOUSING, KEYING OPTION D 11mm CLIP SLOT	YELLOW		YELLOW	SPS/NYLON GF20
1x6 CONNECTOR HOUSING, KEYING OPTION C 11mm CLIP SLOT	YELLOW		YELLOW	SPS/NYLON GF20
1x6 CONNECTOR HOUSING, KEYING OPTION B 11mm CLIP SLOT	YELLOW		YELLOW	SPS/NYLON GF20
1x6 CONNECTOR HOUSING, KEYING OPTION A 11mm CLIP SLOT	YELLOW		STONE GRAY	SPS/NYLON GF20
1x6 CONNECTOR HOUSING, KEYING OPTION D 7mm CLIP SLOT	STONE GRAY		DARK GRAY	SPS/NYLON GF20
1x6 CONNECTOR HOUSING, KEYING OPTION C 7mm CLIP SLOT	DARK GRAY		LIGHT GRAY	SPS/NYLON GF20
1x6 CONNECTOR HOUSING, KEYING OPTION B 7mm CLIP SLOT	LIGHT GRAY		BLACK	SPS/NYLON GF20
1x6 CONNECTOR HOUSING, KEYING OPTION A 7mm CLIP SLOT	BLACK		YELLOW	SPS/NYLON GF20
1x6 CONNECTOR HOUSING, KEYING OPTION D 7mm CLIP SLOT	YELLOW		YELLOW	SPS/NYLON GF20
1x6 CONNECTOR HOUSING, KEYING OPTION C 7mm CLIP SLOT	YELLOW		YELLOW	SPS/NYLON GF20
1x6 CONNECTOR HOUSING, KEYING OPTION B 7mm CLIP SLOT	YELLOW		YELLOW	SPS/NYLON GF20
1x6 CONNECTOR HOUSING, KEYING OPTION A 7mm CLIP SLOT	YELLOW		YELLOW	SPS/NYLON GF20

DESCRIPTION	COLOR	MATERIAL
<b>BOM/APPLICABLE COMPONENTS TABLE</b>		

LEGEND TABLE	
ABREVIATION	COMPONENT
A	CONNECTOR HOUSING KEYING OPTION A
B	CONNECTOR HOUSING KEYING OPTION B
C	CONNECTOR HOUSING KEYING OPTION C
D	CONNECTOR HOUSING KEYING OPTION D
PLR	PLR

<b>ENTER DESCRIPTION</b> EC NO: UAU2016-1803 DRAWN/KOMAL SKY CHKD: APPR:KOLEKSKL DATE: 2016/06/15 <b>B15</b>	<b>QUALITY SYMBOLS</b> ▽=0 ▽=0 ▽=0	<b>GENERAL TOLERANCES (UNLESS SPECIFIED)</b>		<b>DIMENSION STYLE</b> MM ONLY		SCALE	DESIGN UNITS	THIRD ANGLE PROJECTION	
		4 PLACES ±.005 3 PLACES ±.010 2 PLACES ±.015 1 PLACE ±.020 0 PLACE ±.050	mm     INCH ±.005    ±.005 ±.010    ±.010 ±.015    ±.015 ±.020    ±.020 ±.050    ±.050	DRAWN BY: MYANSLAMBROU DATE: 2012/07/13		TITLE: 12MM 1X4, 1X6 BLADE SEALED ASSEMBLY CABLE SEAL			
		APPROVED BY: V.KOSHY DATE: 2012/07/19		MATERIAL NO: SEE BOM			DOCUMENT NO: SD-34899-6001		
		ANGULAR ± 3 ° DRAFT WHERE APPLICABLE MUST REMAIN WITHIN DIMENSIONS		APPROVED BY: V.KOSHY DATE: 2012/07/24		SHEET NO: 11 OF 11		<b>molex</b>	
THIS DRAWING CONTAINS INFORMATION THAT IS PROPRIETARY TO MOLEX INCORPORATED AND SHOULD NOT BE USED WITHOUT WRITTEN PERMISSION									

TABLE OF CONTENTS

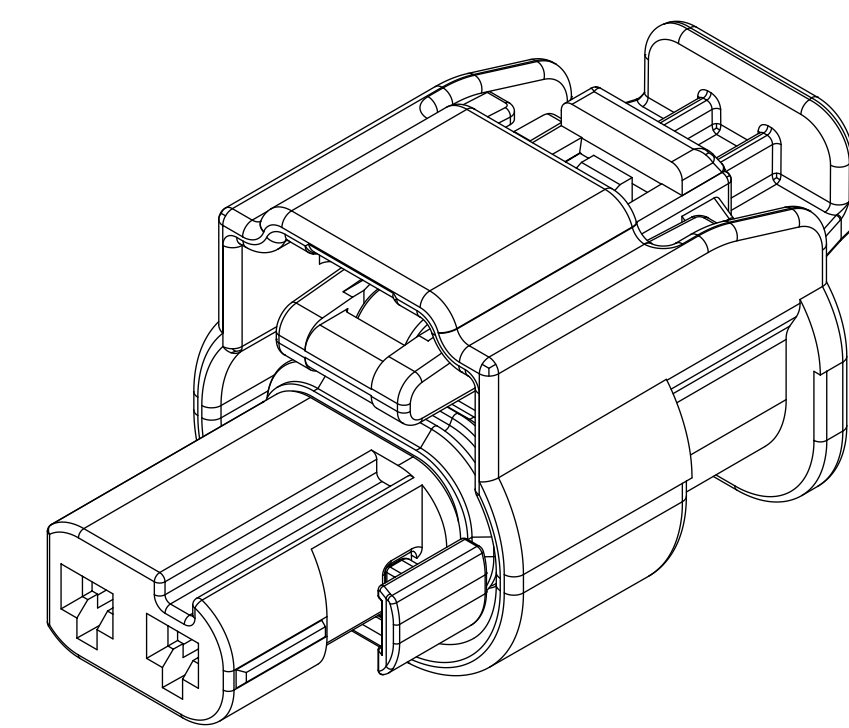
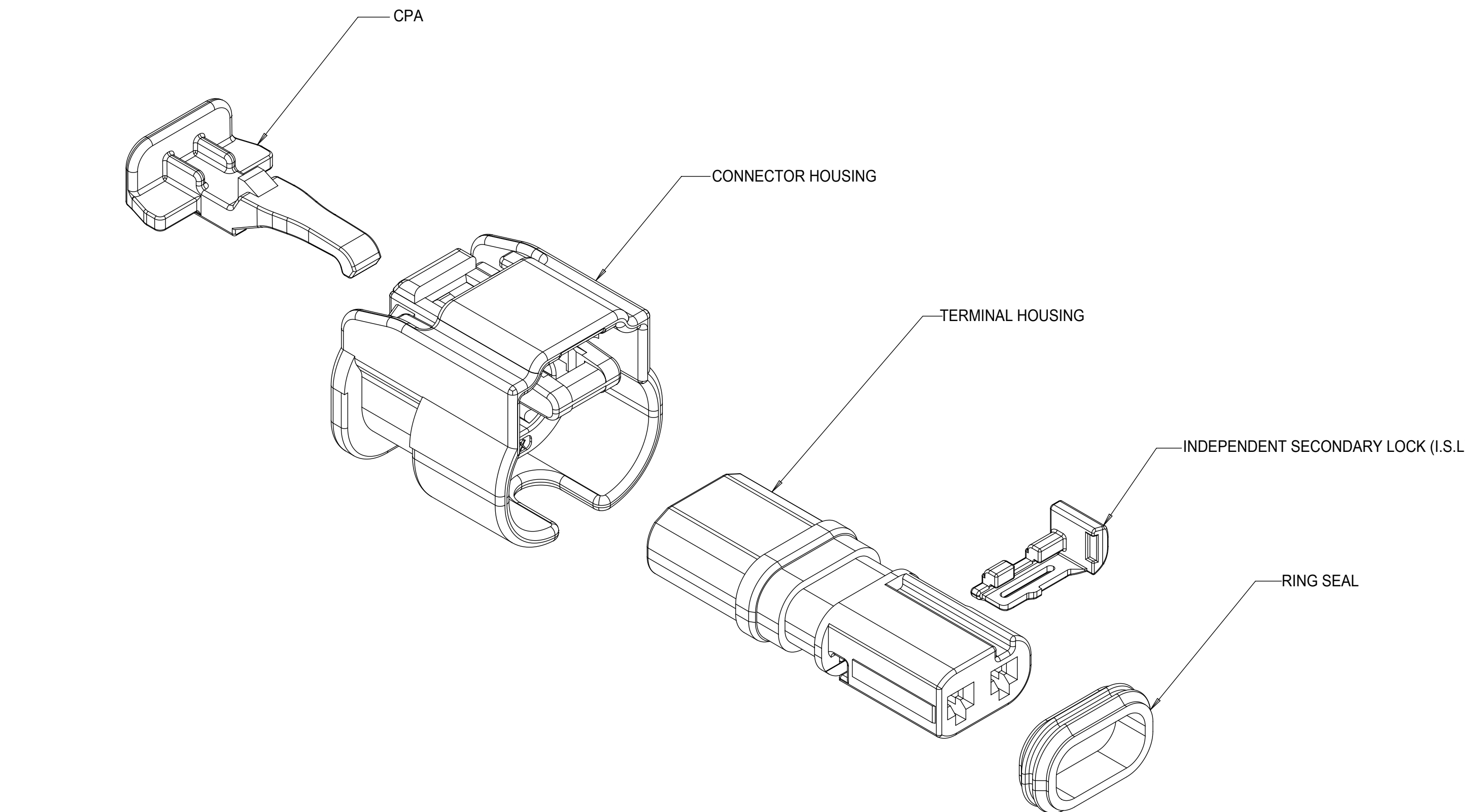
SHEET NO.	SHEET DESCRIPTION
1	NOTES
2	1x2 RECEPTACLE SEALED ASSEMBLY KEYING CONFIGURATIONS
3	1x3 RECEPTACLE SEALED ASSEMBLY KEYING CONFIGURATIONS
4	RECEPTACLE SEALED ASSEMBLY
5	1x2 RECEPTACLE SEALED ASSEMBLY BOM SHEET 1
6	1x3 RECEPTACLE SEALED ASSEMBLY BOM SHEET 1

NOTES: VALID UNLESS OTHERWISE SPECIFIED

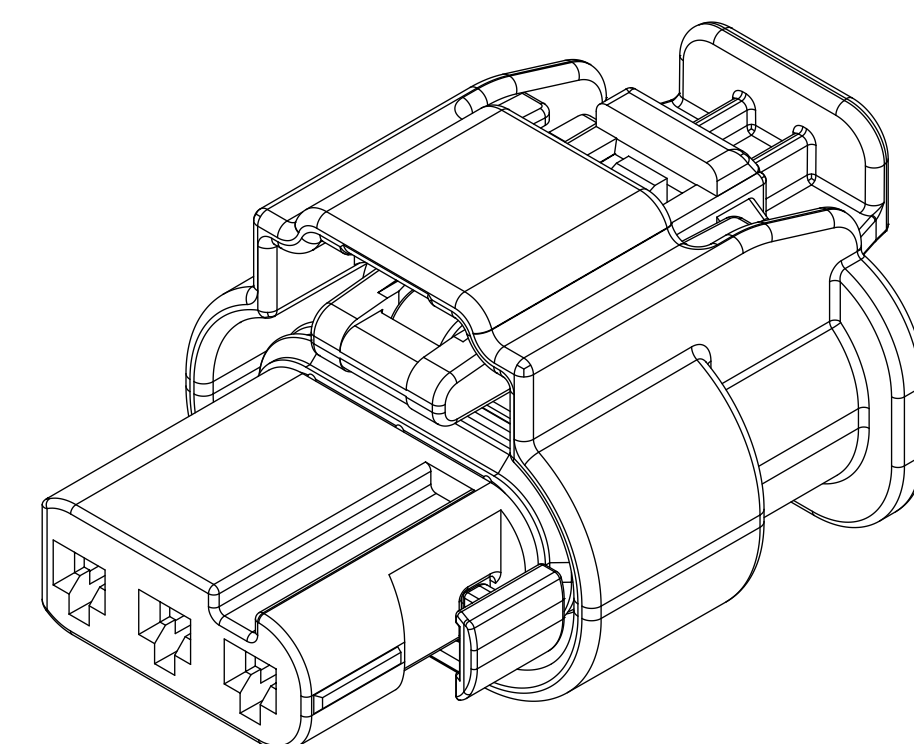
1. GENERAL:
  - a. APPLICATION SPECIFICATION SEE: AS-34900-0001  
CONTAINS: PRODUCT INTRODUCTION, PRODUCT SUMMARY, CONNECTOR ASSEMBLY, PACKAGING INFORMATION, CONNECTOR MATING, SERVICE INSTRUCTIONS, ELECTRICAL CONTINUITY CHECKING, CRIMPING, AND TROUBLESHOOTING.
  - b. PRODUCT SPECIFICATION SEE: PS-34900-0001  
CONTAINS: PRODUCT INTRODUCTION, PRODUCT SUMMARY, RATINGS (CURRENT, TEMPERATURE, SEALING, AND FLAMMABILITY), AND PRODUCT VALIDATION.
  - c. PACKAGING SPECIFICATION PER MOLEX DRAWING: PK-31301-898
  - d. PARTS MUST BE IN COMPLIANCE TO MOLEX CHEMICAL SUBSTANCES FOR PRODUCTS AND PACKAGING SPECIFICATION: ES-40000-5016
  - e. DATA MUST BE SUBMITTED UNDER THE MOLEX PART NUMBER TO IMDS (COMPANY ID#13255)
  - f. DESIGNED TO MATE WITH DEVICE CONNECTION AS SPECIFIED IN BOM CHART  
USCAR DRAWINGS AND MODELS ARE AVAILABLE AT <http://ewcap.uscarteams.org/>.

2. DESIGN - MATERIALS:
  - a. SEE BOM TABLE

3. DESIGN - GEOMETRY:
  - a. THIS IS A 100% CAD GENERATED PART. THE CAD MATHEMATICAL DATA IS THE MASTER FOR THIS PART. FOR DIMENSIONAL OR ANY INFORMATION NOT SHOWN ON THIS DRAWING, ANALYZE THE CAD MODEL.
  - b. GEOMETRIC DIMENSIONS AND TOLERANCES PER ASME Y14.5M - 1994
  - c. EDGES AND UNDIMENSIONED DETAILS PER ISO13715
  - d. CORNERS SHOWN AS SHARP TO BE R 0.2 MAX.
  - e. LETTERING SHALL BE 0.15 MAX RAISED IN 0.25 MAX RECESS PAD.  
THIS INCLUDES RECYCLING CODE, CAVITY ID, VENDOR IDENTIFICATION, AND CUSTOMER MATERIAL NUMBER.
  - f. VISUAL DEFECTS SHALL MEET COSMETIC STANDARD PS-45499-002 (Class B)
  - g. LASER MARKING:
    1. PART NUMBER
    2. DAY OF THE YEAR
    3. SHIFT
    4. YEAR



1x2 RECEPTACLE SEALED ASSEMBLY

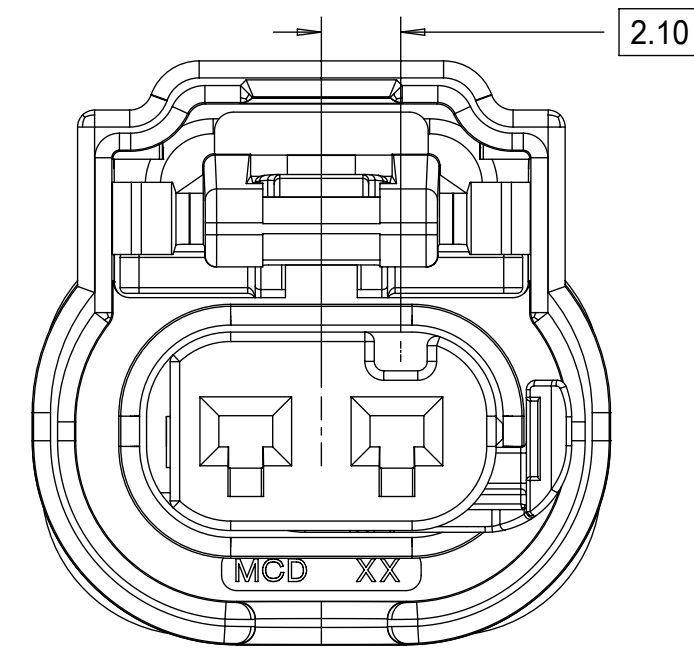


1x3 RECEPTACLE SEALED ASSEMBLY

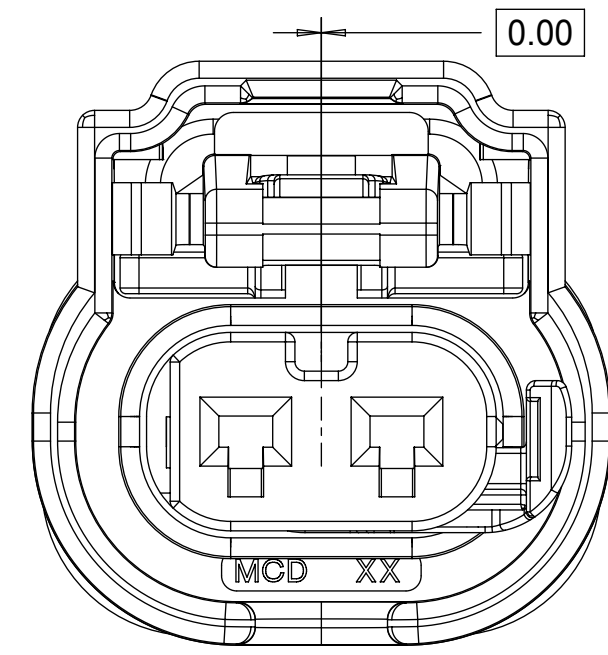
C1	- NX-REMASTERING FROM MODEL MANAGER - 1X2 KEY C MADE SALEABLE
C	34900-3127 RELEASED AS SALEABLE
B	PRIMARY KEYS (A,B) MOVED TO SALEABLE
A10	ADDED 1X3 SEVERE VIBRATION PART NUMBER
A9	1X2 AND 1X3 PART # UPDATED DIMENSION 2 UPDATED
A8	1X2 PART # UPDATED TO "TOOLED BUT NOT VALIDATED"
A7	1X2 PART # UPDATED TO "TOOLED BUT NOT VALIDATED"
A6	ADDED NEW PART NUMBERS FOR LATCH IMPROVEMENT
A5	BOM CORRECTIONS AND UPDATES
A4	BOM CORRECTIONS AND UPDATES
A3	1x2, 1x3 NON-SIR OK TO TOOL
A2	MINOR BOM CORRECTIONS
A1	ADDED COMPONENTS TO BOM
A	ADDED BLACK PART NUMBERS AND MINOR BOM UPDATES
3	ADDED 1x3
2	MINOR BOM CORRECTIONS
1	INITIAL RELEASE
REV	DESCRIPTION

QUALITY SYMBOLS	THIS DRAWING CONTAINS INFORMATION THAT IS PROPRIETARY TO MOLEX ELECTRONIC TECHNOLOGIES, LLC AND SHOULD NOT BE USED WITHOUT WRITTEN PERMISSION		DIMENSION UNITS		SCALE
▽ = 0	2017/04/20	2017/06/06	GENERAL TOLERANCES (UNLESS SPECIFIED)		MM
▽ = 0			ANGULAR TOL ± 3.0 °		
▽ = 0			4 PLACES ±	DRWN BY	DATE
▽ = 0			3 PLACES ±	MVANSLAMBROU	2012/02/15
▽ = 0			2 PLACES ± 0.1	CHKD BY	DATE
▽ = 0			1 PLACE ± 0.2	APPR BY	DATE
▽ = 0			0 PLACES ± 0.5	GGA	2012/12/13
▽ = 0			DRAFT WHERE APPLICABLE MUST REMAIN WITHIN DIMENSIONS	DRAWING SIZE	THIRD ANGLE PROJECTION
▽ = 0				D	
EC NO: 117704 DRWN: VYARAPPA CHKD: KDEKOSKI REV: APPR: KDEKOSKI			SERIES	MATERIAL NUMBER	CUSTOMER
C1			34900	SEE TABLE	GENERAL MARKET
RELEASE STATUS P1 RELEASE DATE 06.06.2017 17:35:25			DOCUMENT NUMBER	DOC TYPE	DOC PART SHEET NUMBER
			SD-34900-2001	PSD	001 1 OF 6

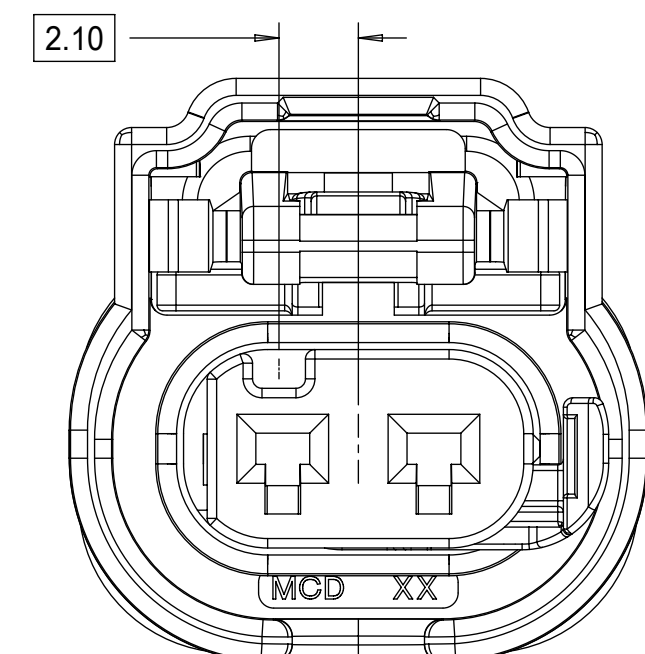
1x2 RECEPTACLE SEALED ASSEMBLY KEYING CONFIGURATIONS. FOR PART NUMBERS REFER TO BOM SHEET.



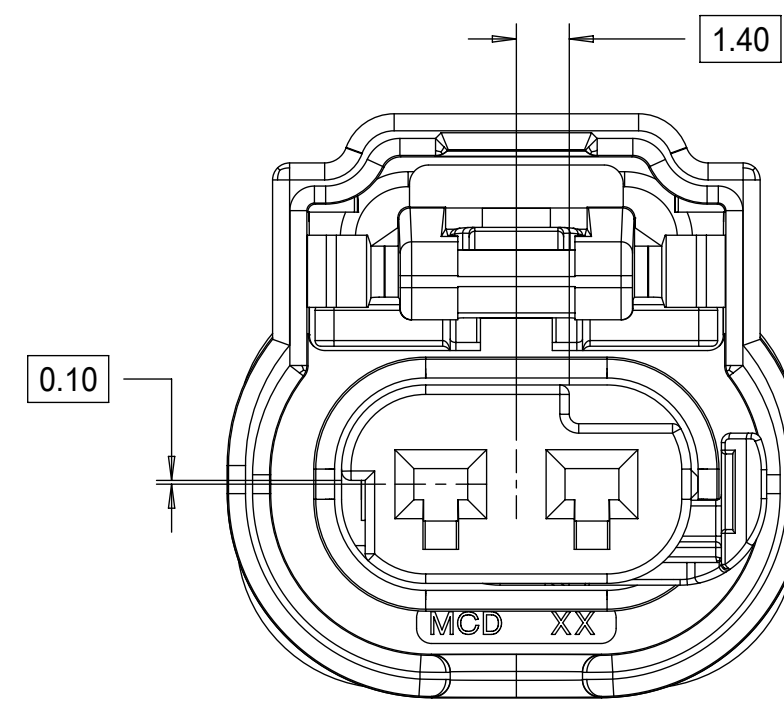
KEYING OPTION A



KEYING OPTION B



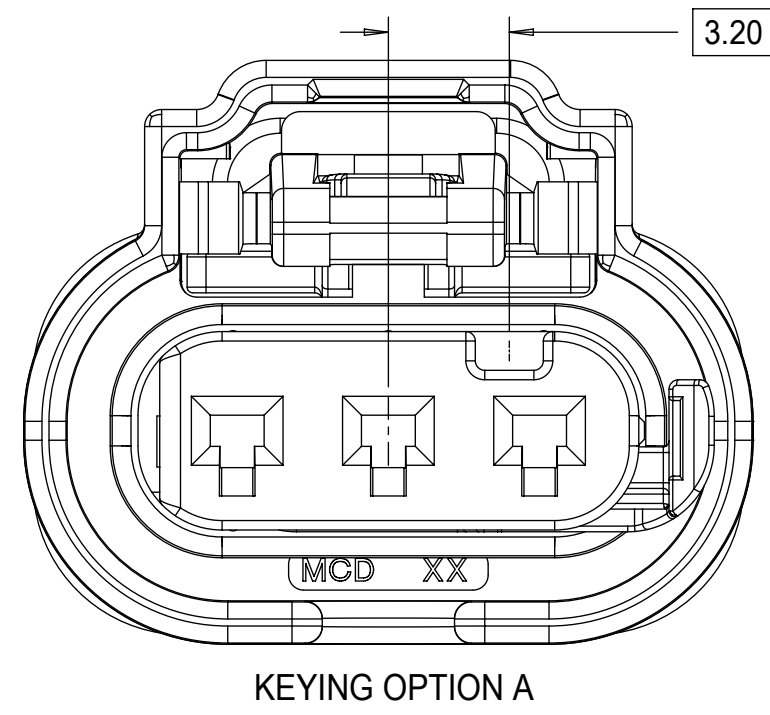
KEYING OPTION C



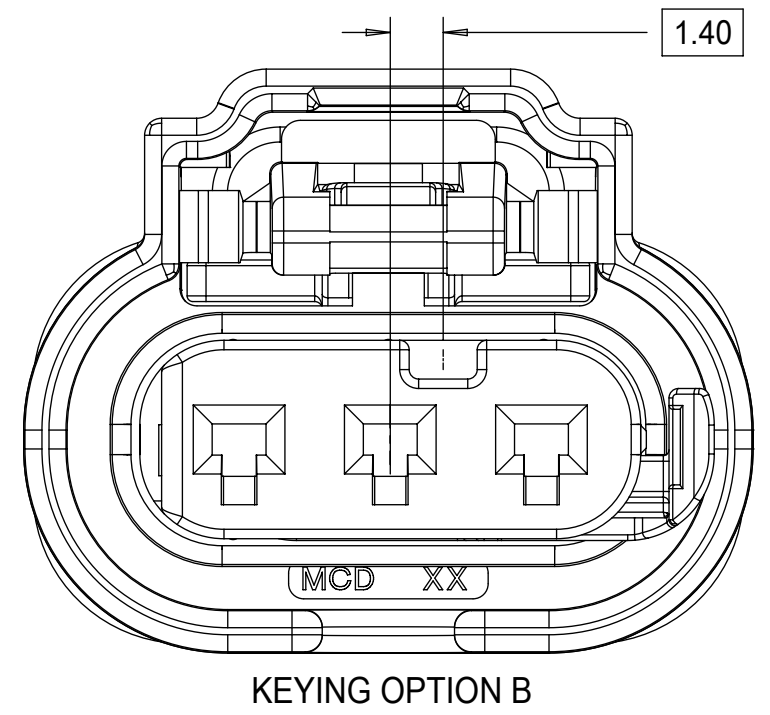
KEYING OPTION E

QUALITY SYMBOLS ▽ = 0 ▽ = 0 ▽ = 0 ▽ = 0 ▽ = 0 ▽ = 0 ▽ = 0 ▽ = 0 ▽ = 0		THIS DRAWING CONTAINS INFORMATION THAT IS PROPRIETARY TO MOLEX ELECTRONIC TECHNOLOGIES, LLC AND SHOULD NOT BE USED WITHOUT WRITTEN PERMISSION		GENERAL TOLERANCES (UNLESS SPECIFIED) ANGULAR TOL ± 3.0 ° 4 PLACES ± 3 PLACES ± 2 PLACES ± 0.1 1 PLACE ± 0.2 0 PLACES ± 0.5 DRAFT WHERE APPLICABLE MUST REMAIN WITHIN DIMENSIONS		DIMENSION UNITS MM		SCALE 5:1		DRWN BY MVANSLAMBROU		DATE 2012/02/15		CHKD BY GGA		DATE 2012/12/13		APPR BY GGA		DATE 2012/12/13		DRAWING SIZE D		THIRD ANGLE PROJECTION		SERIES 34900		MATERIAL NUMBER SEE BOM		CUSTOMER GENERAL MARKET		PRODUCT CUSTOMER DRAWING																					
EC NO: 117704 DRWN: VYARAPPA CHKD: REV APPR: KDEKOSKI		2017/04/20 2017/06/06		2017/04/20 2017/06/06		2017/04/20 2017/06/06		2017/04/20 2017/06/06		2017/04/20 2017/06/06		2017/04/20 2017/06/06		2017/04/20 2017/06/06		2017/04/20 2017/06/06		2017/04/20 2017/06/06		2017/04/20 2017/06/06		2017/04/20 2017/06/06		2017/04/20 2017/06/06		2017/04/20 2017/06/06		2017/04/20 2017/06/06		2017/04/20 2017/06/06		2017/04/20 2017/06/06		2017/04/20 2017/06/06																			
RELEASE STATUS P1		RELEASE DATE 06.06.2017		17:35:25		C1		SD-34900-2001		PSD		001		2 OF 6		19		18		17		16		15		14		13		12		11		10		9		8		7		6		5		4		3		2		1	

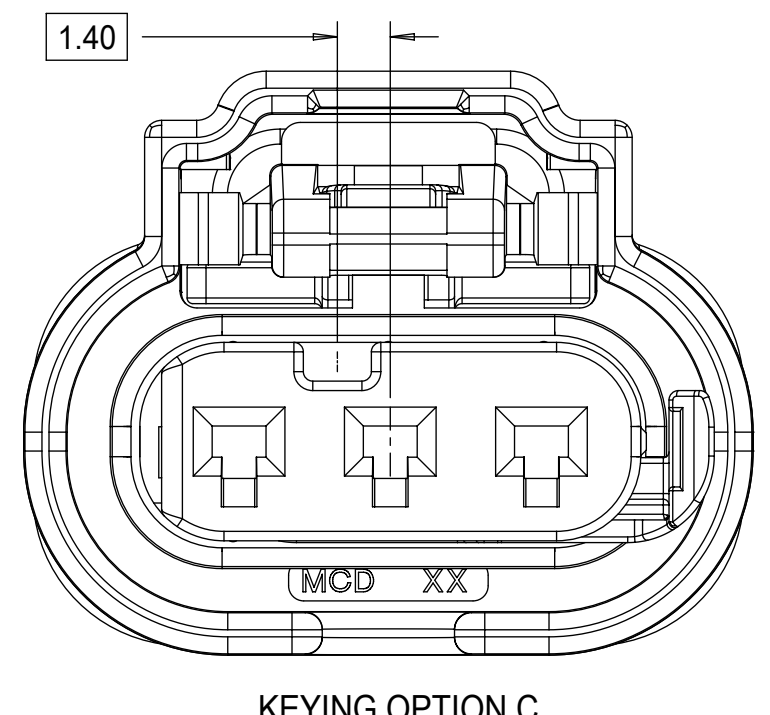
1x3 RECEPTACLE SEALED ASSEMBLY KEYING CONFIGURATIONS. FOR PART NUMBERS REFER TO BOM SHEET.



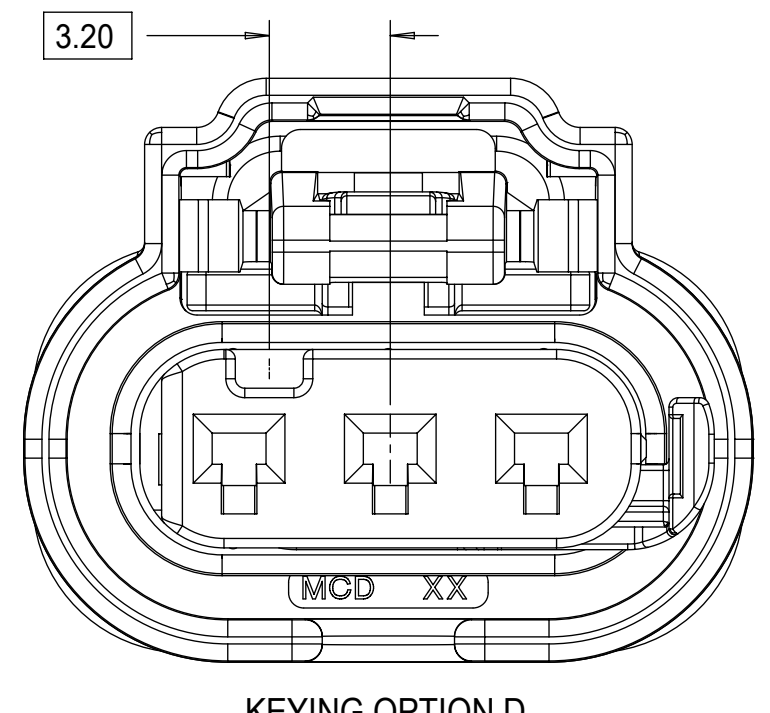
KEYING OPTION A



KEYING OPTION B

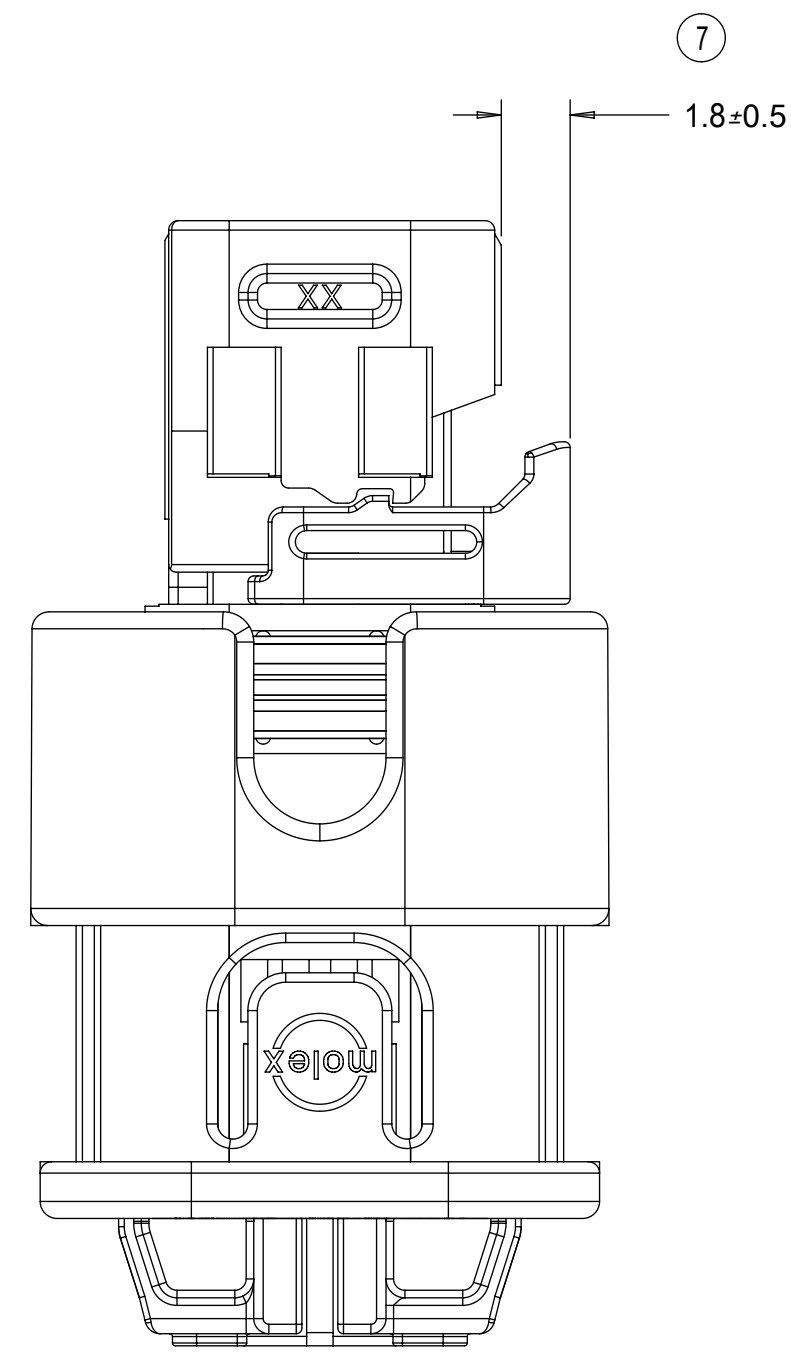
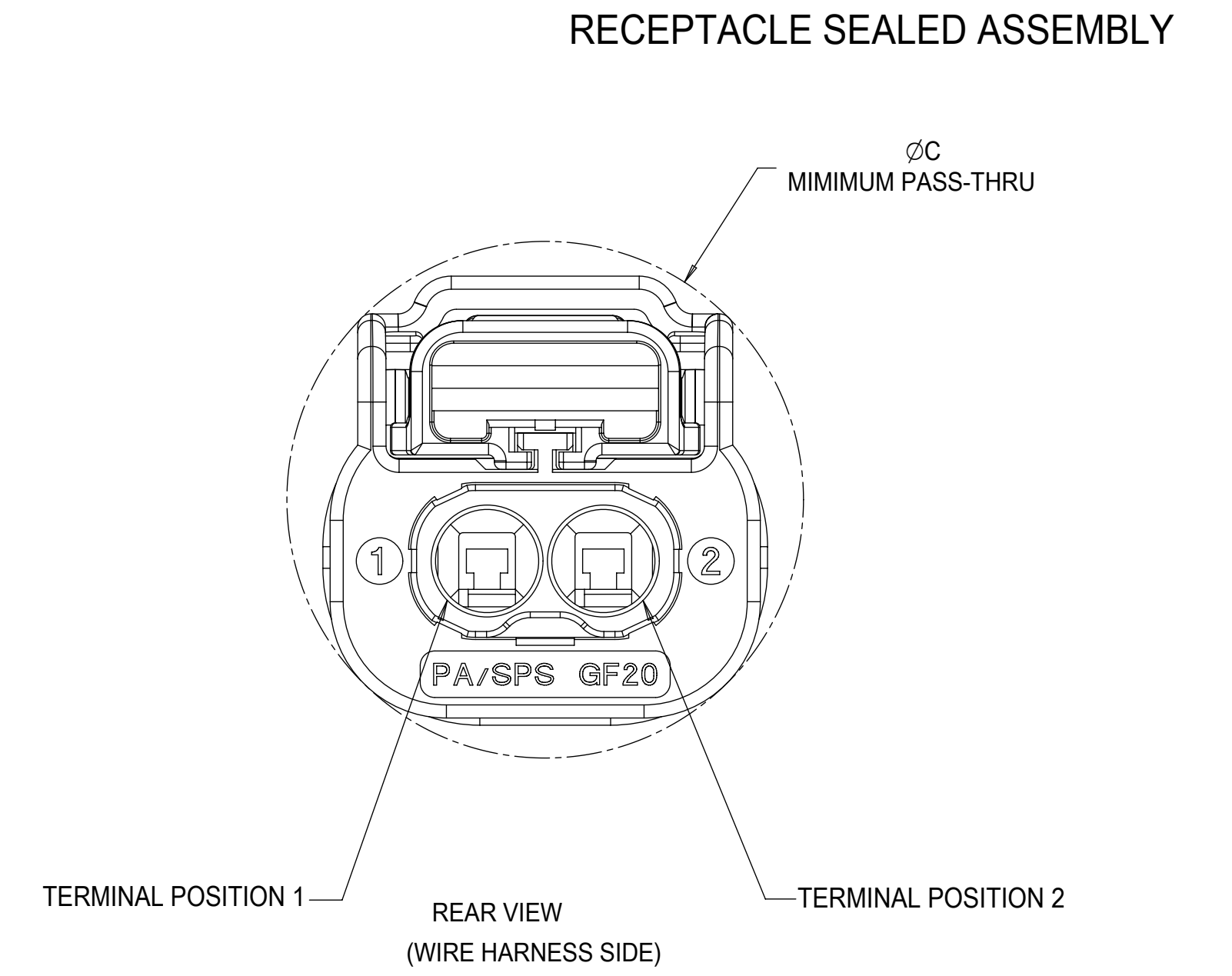
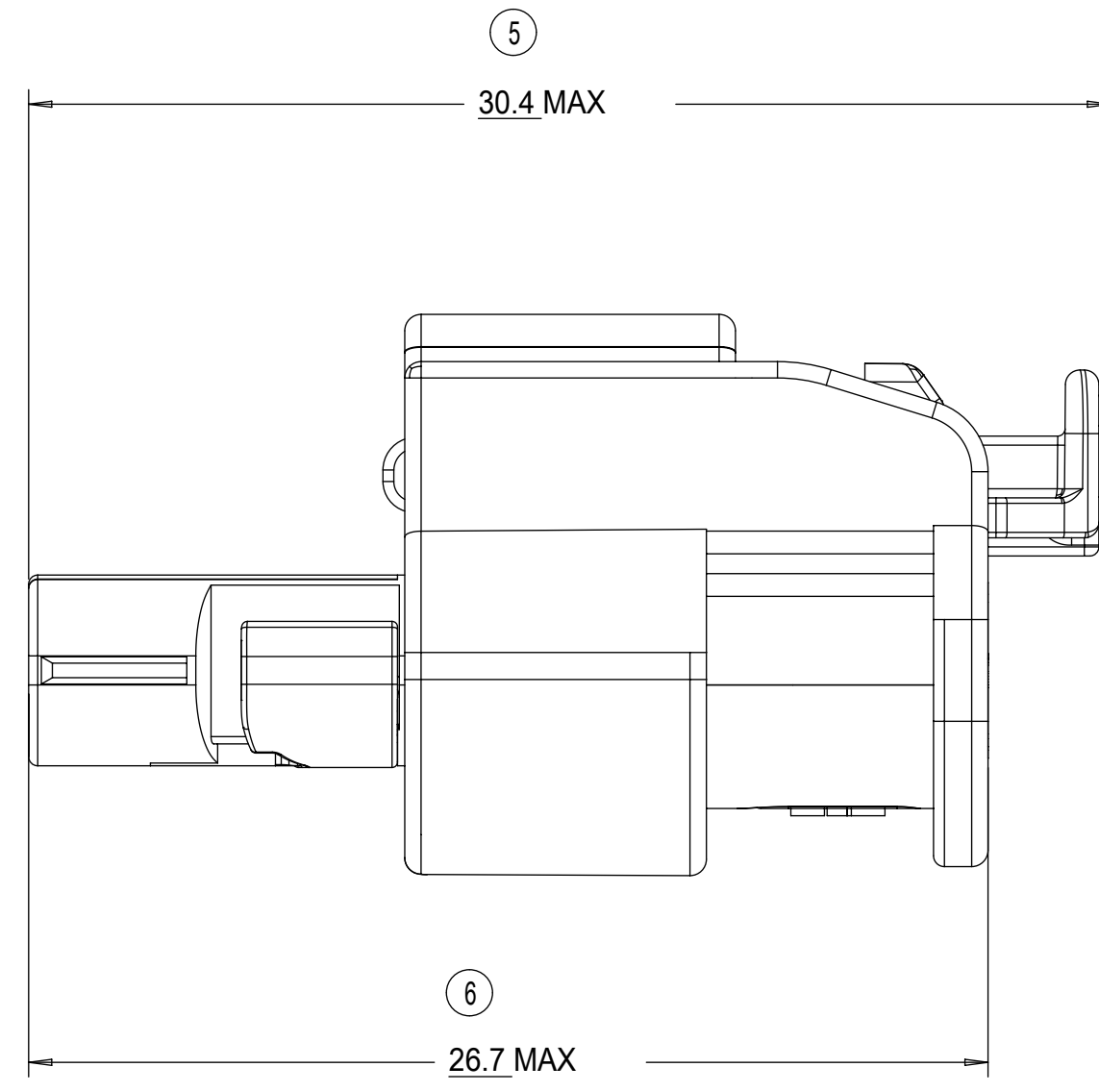
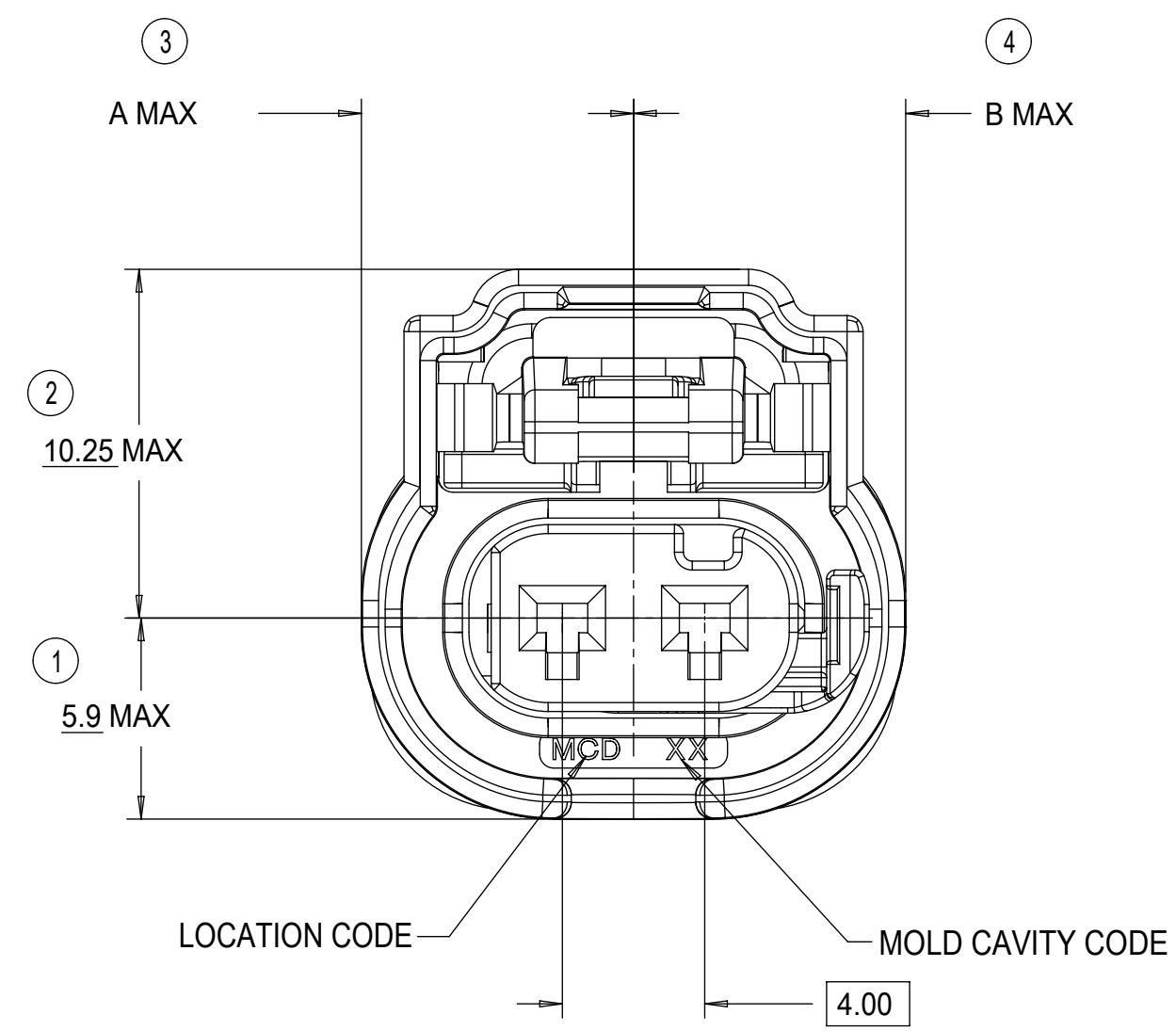
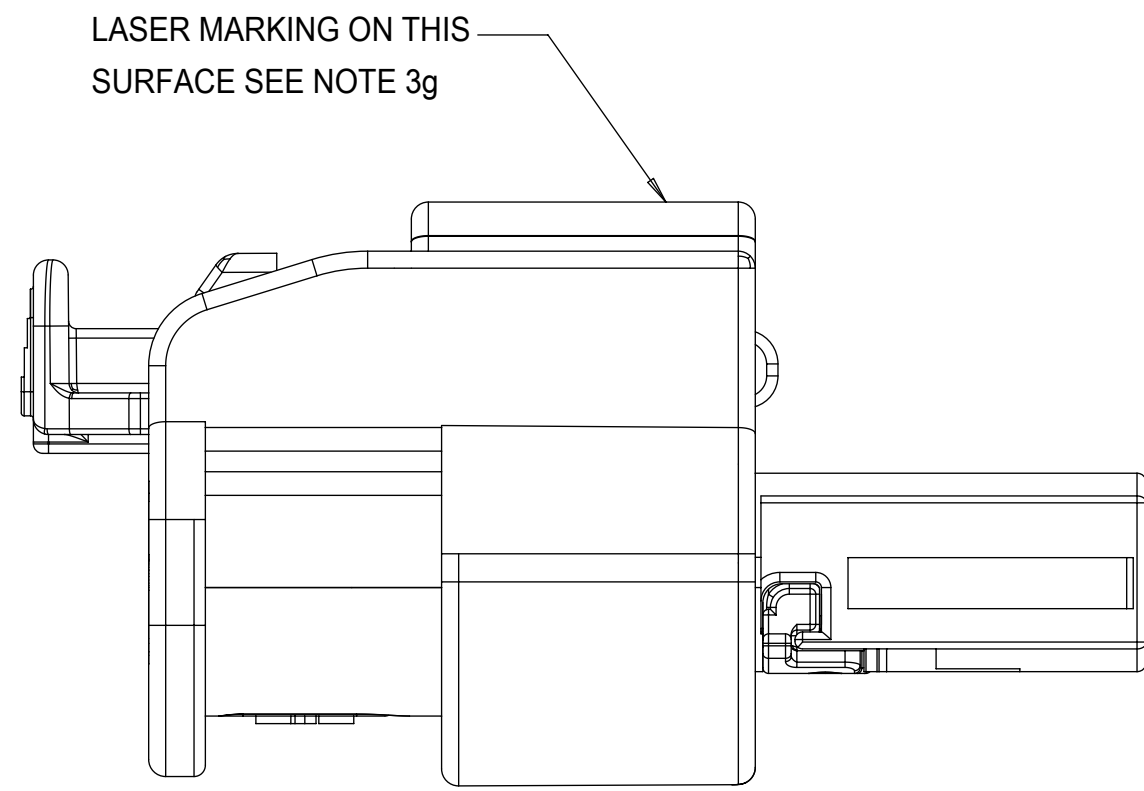


KEYING OPTION C

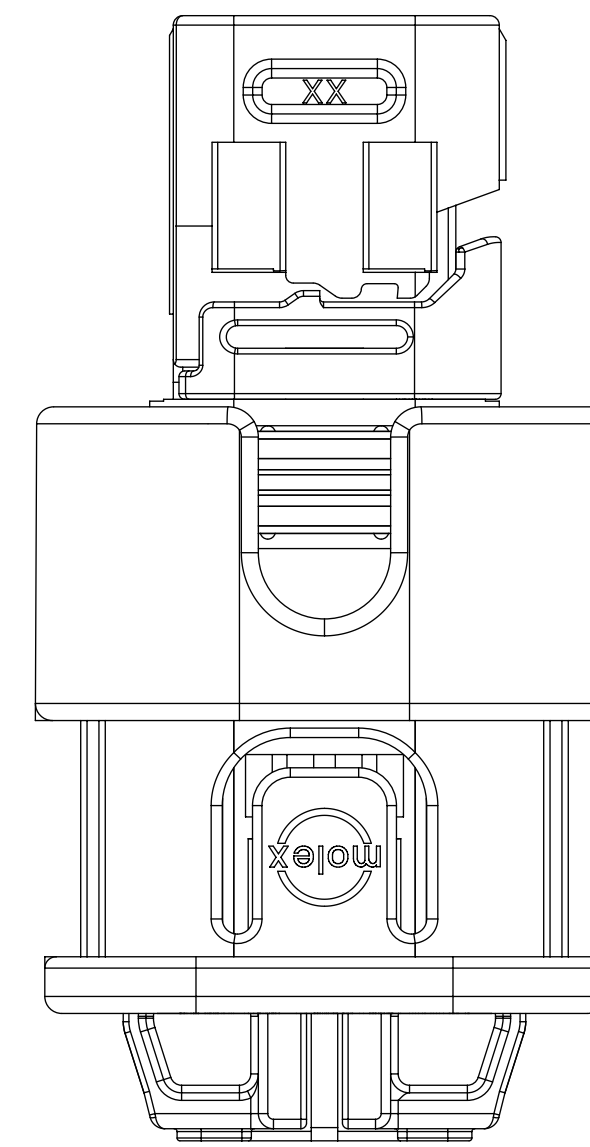


KEYING OPTION D

QUALITY SYMBOLS ▽ = 0 ▽ = 0 ▽ = 0 ▽ = 0 ▽ = 0 ▽ = 0 ▽ = 0 ▽ = 0 ▽ = 0		THIS DRAWING CONTAINS INFORMATION THAT IS PROPRIETARY TO MOLEX ELECTRONIC TECHNOLOGIES, LLC AND SHOULD NOT BE USED WITHOUT WRITTEN PERMISSION		GENERAL TOLERANCES (UNLESS SPECIFIED) ANGULAR TOL ± 3.0 ° 4 PLACES ± 3 PLACES ± 2 PLACES ± 0.1 1 PLACE ± 0.2 0 PLACES ± 0.5 DRAFT WHERE APPLICABLE MUST REMAIN WITHIN DIMENSIONS		DIMENSION UNITS MM		SCALE 5:1		DRWN BY MVANSLAMBROU		DATE 2012/02/15		CHKD BY DATE		APPR BY GGA		DATE 2012/12/13		DRAWING SIZE D		THIRD ANGLE PROJECTION		SERIES 34900		MATERIAL NUMBER SEE BOM		CUSTOMER GENERAL MARKET	
EC NO: 117704 DRWN: VYARAPPA CHKD: REV APPR: KDEKOSKI		2017/04/20 2017/06/06		MOLEX		1.2MM 1X2, 1X3 RECPT. SEALED ASSEMBLY CABLE SEAL		PRODUCT CUSTOMER DRAWING		DOCUMENT NUMBER SD-34900-2001		DOC TYPE PSD		DOC PART 001		SHEET NUMBER 3 OF 6													



INDEPENDENT SECONDARY LOCK (ISL)  
SHOWN IN THE PRE-STAGED POSITION



INDEPENDENT SECONDARY LOCK (ISL)  
SHOWN IN THE FINAL-LOCK POSITION

1x3 RECEPTACLE SEALED ASSEMBLY	10.0	10.0	20.75
1x2 RECEPTACLE SEALED ASSEMBLY	8.0	8.0	18.75
CONFIGURATION	A	B	C
<b>CHARTED DIMENSIONS</b>			


<b>QUALITY SYMBOLS</b> 	THIS DRAWING CONTAINS INFORMATION THAT IS PROPRIETARY TO MOLEX ELECTRONIC TECHNOLOGIES, LLC AND SHOULD NOT BE USED WITHOUT WRITTEN PERMISSION									
	2017/04/20	2017/06/06	GENERAL TOLERANCES (UNLESS SPECIFIED)		DIMENSION UNITS	SCALE				
	DRWN BY: VYARAPPA	CHKD: KDEKOSKI	ANGULAR TOL ± 3.0 °		MM	5:1				
	EC NO: 117704 DRWN: VYARAPPA CHKD: KDEKOSKI REV APPR:	4 PLACES ±	4 PLACES ±		DRWN BY	DATE	1.2MM 1X2, 1X3 RECPT. SEALED ASSEMBLY CABLE SEAL  PRODUCT CUSTOMER DRAWING  SERIES: 34900 MATERIAL NUMBER: SEE BOM CUSTOMER: GENERAL MARKET  DOCUMENT NUMBER: SD-34900-2001 DOC TYPE: PSD DOC PART: 001 SHEET NUMBER: 4 OF 6			
		3 PLACES ±	3 PLACES ±		MVANSLAMBROU	2012/02/15				
		2 PLACES ± 0.1	2 PLACES ±		CHKD BY	DATE				
		1 PLACE ± 0.2	1 PLACE ±		APPR BY	DATE				
		0 PLACES ± 0.5	0 PLACES ±		GGA	2012/12/13				
	DRAFT WHERE APPLICABLE MUST REMAIN WITHIN DIMENSIONS		DRAWING SIZE	THIRD ANGLE PROJECTION	D					

1X2 RECEPTACLE SEALED ASSEMBLY BOM SHEET 1

KEYING OPTION E, BLACK	34900-2123	-40 TO 155	4				CHB			E	TOOLED BUT NOT VALIDATED		1	2	3
KEYING OPTION C, BLACK	34900-2122	-40 TO 155	4				CHB			C	SALEABLE		1	2	3
KEYING OPTION B, BLACK	34900-2121	-40 TO 155	4				CHB		B		SALEABLE		1	2	3
KEYING OPTION A, BLACK	34900-2120	-40 TO 155	4				CHB		A		SALEABLE		1	2	3
KEYING OPTION E, YELLOW	34900-2104	-40 TO 125	2				CHY			E	TOOLED BUT NOT VALIDATED		1	2	3
KEYING OPTION C, YELLOW	34900-2103	-40 TO 125	2				CHY			C	SALEABLE		1	2	3
KEYING OPTION B, YELLOW	34900-2102	-40 TO 125	2				CHY		B		SALEABLE		1	2	3
KEYING OPTION A, YELLOW	34900-2101	-40 TO 125	2				CHY		A		SALEABLE		1	2	3
KEYING OPTION E, BLACK	34900-2023	-40 TO 125	2				CHB			E	OBSOLETE		1	2	3
KEYING OPTION C, BLACK	34900-2022	-40 TO 125	2				CHB			C	OBSOLETE		1	2	3
KEYING OPTION B, BLACK	34900-2021	-40 TO 125	2				CHB		B		OBSOLETE		1	2	3
KEYING OPTION A, BLACK	34900-2020	-40 TO 125	2				CHB		A		OBSOLETE		1	2	3
KEYING OPTION E, YELLOW	34900-2004	-40 TO 125	2				CHY			E	OBSOLETE		1	2	3
KEYING OPTION C, YELLOW	34900-2003	-40 TO 125	2				CHY			C	OBSOLETE		1	2	3
KEYING OPTION B, YELLOW	34900-2002	-40 TO 125	2				CHY		B		SALEABLE		1	2	3
KEYING OPTION A, YELLOW	34900-2001	-40 TO 125	2				CHY		A		SALEABLE		1	2	3
ASSEMBLY DESCRIPTION	PART NUMBER	OPERATING TEMPERATURE	VIBRATION CLASS PER GMW3191 DEC. 2007				A	B	C	E	STATUS	COMMENTS	DESIGNED TO MATE WITH DEVICE CONNECTION		

	RING SEAL	BURNT RED	INHERENTLY LUBRICATED SILICONE	
	ISL	NATURAL	SPS/NYLON GF20	
	CPA	RED	PBT GF30	
	TERMINAL HOUSING KEYING OPTION E	STONE GRAY	SPS/NYLON GF20	
	TERMINAL HOUSING KEYING OPTION C	DARK GRAY	SPS/NYLON GF20	
	TERMINAL HOUSING KEYING OPTION B	LT. GRAY	SPS/NYLON GF20	
	TERMINAL HOUSING KEYING OPTION A	BLACK	SPS/NYLON GF20	
	CONNECTOR HOUSING	BLACK	SPS/NYLON GF20	UPDATED LATCH
	CONNECTOR HOUSING	YELLOW	SPS/NYLON GF20	UPDATED LATCH
	CONNECTOR HOUSING	BLACK	SPS/NYLON GF20	
	CONNECTOR HOUSING	YELLOW	SPS/NYLON GF20	
	DESCRIPTION	COLOR	MATERIAL	COMMENTS
BOM / APPLICABLE COMPONENTS TABLE				

ABREVIATION	COMPONENT
CHY	CONNECTOR HOUSING YELLOW
CHB	CONNECTOR HOUSING BLACK
A	TERMINAL HOUSING KEY A
B	TERMINAL HOUSING KEY B
C	TERMINAL HOUSING KEY C
E	TERMINAL HOUSING KEY E
CPA	CPA
ISL	ISL
R	RING SEAL
1	USCAR INTERFACE 120-S-003-1-Z01 SEE NOTE 1f FOR WEBSITE
2	MOLEX INLINE BLADE CONNECTOR E-34899-2001
3	USCAR INTERFACE 120-S-003-1-Z02 SEE NOTE 1f FOR WEBSITE

THIS DRAWING CONTAINS INFORMATION THAT IS PROPRIETARY TO MOLEX ELECTRONIC TECHNOLOGIES, LLC AND SHOULD NOT BE USED WITHOUT WRITTEN PERMISSION											
QUALITY SYMBOLS	2017/04/20	2017/06/06	GENERAL TOLERANCES (UNLESS SPECIFIED)	DIMENSION UNITS	SCALE	 1.2MM 1X2, 1X3 RECPT. SEALED ASSEMBLY CABLE SEAL PRODUCT CUSTOMER DRAWING					
▽ = 0	EC NO: 117704 DRWN: VYARAPPA CHKD: REV APPR: KDEKOSKI	2017/06/06	ANGULAR TOL ± 3.0 °	MM	2:1						
▽ = 0			4 PLACES ±	DRWN BY	DATE						
▽ = 0			3 PLACES ±	MVANSLAMBROU	2012/02/15						
▽ = 0	2 PLACES ± 0.1	CHKD BY	DATE	APPR BY		DATE	SERIES		MATERIAL NUMBER	CUSTOMER	
▽ = 0	1 PLACE ± 0.2	GGA	2012/12/13	DRAFT WHERE APPLICABLE MUST REMAIN WITHIN DIMENSIONS		D	THIRD ANGLE PROJECTION		34900	9999999999	GENERAL MARKET
▽ = 0	0 PLACES ± 0.5			DOCUMENT NUMBER		DOC TYPE		DOC PART	SHEET NUMBER		
▽ = 0	C1		SD-34900-2001		PSD	001	5 OF 6				



1X3 RECEPTACLE SEALED ASSEMBLY BOM SHEET 1

KEYING OPTION D, STONE GRAY	34900-3127	-40 TO 155	4												CHB								D	SALEABLE			1	2	3
KEYING OPTION C, DARK GRAY	34900-3126	-40 TO 155	4												CHB								C	OK TO TOOL			1	2	3
KEYING OPTION B, LIGHT GRAY	34900-3125	-40 TO 155	4												CHB								B	OK TO TOOL			1	2	3
KEYING OPTION A, BLACK	34900-3124	-40 TO 155	4												CHB								A	SALEABLE			1	2	3
KEYING OPTION D, STONE GRAY	34900-3123	-40 TO 125	2												CHB								D	TOOLED BUT NOT VALIDATED			1	2	3
KEYING OPTION C, DARK GRAY	34900-3122	-40 TO 125	2												CHB								C	TOOLED BUT NOT VALIDATED			1	2	3
KEYING OPTION B, LIGHT GRAY	34900-3121	-40 TO 125	2												CHB								B	SALEABLE			1	2	3
KEYING OPTION A, BLACK	34900-3120	-40 TO 125	2												CHB								A	SALEABLE			1	2	3
KEYING OPTION D, YELLOW	34900-3104	-40 TO 125	2												CHY								D	TOOLED BUT NOT VALIDATED			1	2	3
KEYING OPTION C, YELLOW	34900-3103	-40 TO 125	2												CHY								C	TOOLED BUT NOT VALIDATED			1	2	3
KEYING OPTION B, YELLOW	34900-3102	-40 TO 125	2												CHY								B	SALEABLE			1	2	3
KEYING OPTION A, YELLOW	34900-3101	-40 TO 125	2												CHY								A	SALEABLE			1	2	3
KEYING OPTION D, STONE GRAY	34900-3023	-40 TO 125	2												CHB								D	OBSOLETE			1	2	3
KEYING OPTION C, DARK GRAY	34900-3022	-40 TO 125	2												CHB								C	OBSOLETE			1	2	3
KEYING OPTION B, LIGHT GRAY	34900-3021	-40 TO 125	2												CHB								B	OBSOLETE			1	2	3
KEYING OPTION A, BLACK	34900-3020	-40 TO 125	2												CHB								A	OBSOLETE			1	2	3
KEYING OPTION D, YELLOW	34900-3004	-40 TO 125	2												CHY								D	OBSOLETE			1	2	3
KEYING OPTION C, YELLOW	34900-3003	-40 TO 125	2												CHY								C	OBSOLETE			1	2	3
KEYING OPTION B, YELLOW	34900-3002	-40 TO 125	2												CHY								B	OBSOLETE			1	2	3
KEYING OPTION A, YELLOW	34900-3001	-40 TO 125	2												CHY								A	OBSOLETE			1	2	3
ASSEMBLY DESCRIPTION	PART NUMBER	OPERATING TEMPERATURE	VIBRATION CLASS PER GMW3191 DEC. 2007												A	B	C	D	A	B	C	D	STATUS	COMMENTS	DESIGNED TO MATE WITH DEVICE CONNECTION				

RING SEAL	LIGHT BLUE	INHERENTLY LUBRICATED SILICONE	
ISL	NATURAL	SPS/NYLON GF20	
CPA	RED	PBT GF30	
TERMINAL HOUSING KEYING OPTION D, V4	STONE GRAY	SPS/NYLON GF20	
TERMINAL HOUSING KEYING OPTION C, V4	DARK GRAY	SPS/NYLON GF20	
TERMINAL HOUSING KEYING OPTION B, V4	LT. GRAY	SPS/NYLON GF20	
TERMINAL HOUSING KEYING OPTION A, V4	BLACK	SPS/NYLON GF20	
TERMINAL HOUSING KEYING OPTION D	STONE GRAY	SPS/NYLON GF20	
TERMINAL HOUSING KEYING OPTION C	DARK GRAY	SPS/NYLON GF20	
TERMINAL HOUSING KEYING OPTION B	LT. GRAY	SPS/NYLON GF20	
TERMINAL HOUSING KEYING OPTION A	BLACK	SPS/NYLON GF20	
CONNECTOR HOUSING	BLACK	SPS/NYLON GF20	UPDATED LATCH
CONNECTOR HOUSING	YELLOW	SPS/NYLON GF20	UPDATED LATCH
CONNECTOR HOUSING	BLACK	SPS/NYLON GF20	
CONNECTOR HOUSING	YELLOW	SPS/NYLON GF20	
DESCRIPTION	COLOR	MATERIAL	COMMENTS

BOM / APPLICABLE COMPONENTS TABLE

LEGEND TABLE

ABREVIATION	COMPONENT
CHY	CONNECTOR HOUSING YELLOW
CHB	CONNECTOR HOUSING BLACK
A	TERMINAL HOUSING KEY A
B	TERMINAL HOUSING KEY B
C	TERMINAL HOUSING KEY C
D	TERMINAL HOUSING KEY D
CPA	CPA
ISL	ISL
R	RING SEAL
1	USCAR INTERFACE 120-S-002-1-Z01 SEE NOTE 1f FOR WEBSITE
2	MOLEX INLINE BLADE CONNECTOR E-34899-2001
3	USCAR INTERFACE 120-S-002-1-Z02 SEE NOTE 1f FOR WEBSITE

QUALITY SYMBOLS	THIS DRAWING CONTAINS INFORMATION THAT IS PROPRIETARY TO MOLEX ELECTRONIC TECHNOLOGIES, LLC AND SHOULD NOT BE USED WITHOUT WRITTEN PERMISSION						
▽ = 0	2017/04/20	2017/06/06	GENERAL TOLERANCES (UNLESS SPECIFIED)	DIMENSION UNITS	SCALE		
▽ = 0			ANGULAR TOL ± 3.0 °	MM	5:1		
▽ = 0			4 PLACES ±	DRWN BY	DATE		
▽ = 0			3 PLACES ±	MVANSLAMBROU	2012/02/15		
▽ = 0	2 PLACES ± 0.1	CHKD BY	DATE				
▽ = 0	1 PLACE ± 0.2	APPR BY	DATE				
▽ = 0	0 PLACES ± 0.5	GGA	2012/12/13				
▽ = 0	DRAFT WHERE APPLICABLE MUST REMAIN WITHIN DIMENSIONS	DRAWING SIZE	THIRD ANGLE PROJECTION	SERIES	MATERIAL NUMBER	CUSTOMER	
▽ = 0		D	⊕	34900	9999999999	GENERAL MARKET	
▽ = 0				DOCUMENT NUMBER	DOC TYPE	DOC PART	SHEET NUMBER
				SD-34900-2001	PSD	001	6 OF 6

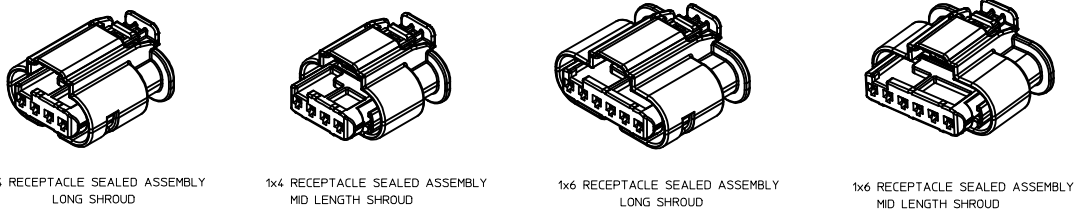
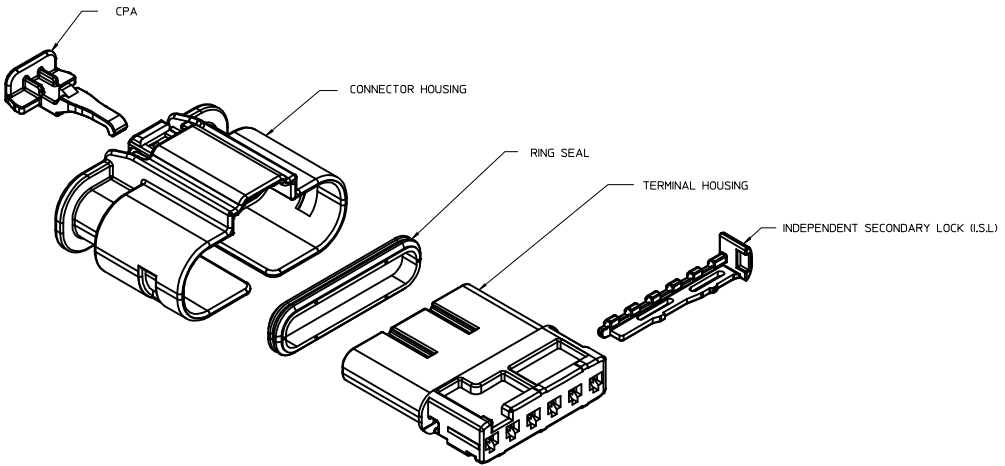


1.2MM 1X2, 1X3 RECPT. SEALED ASSEMBLY CABLE SEAL

PRODUCT CUSTOMER DRAWING

**TABLE OF CONTENTS**

SHEET NO.	SHEET DESCRIPTION
1	NOTES
2	1x4 RECEPTACLE SEALED ASSEMBLY KEYING CONFIGURATIONS
3	1x6 RECEPTACLE SEALED ASSEMBLY KEYING CONFIGURATIONS
4	RECEPTACLE SEALED ASSEMBLY
5	1x4 RECEPTACLE SEALED ASSEMBLY BOM SHEET
6	1x6 RECEPTACLE SEALED ASSEMBLY BOM SHEET



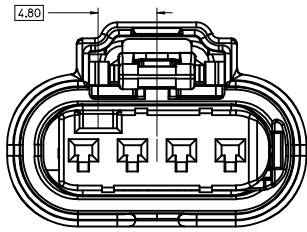
**NOTES: VALID UNLESS OTHERWISE SPECIFIED**

1. GENERAL:
  - a. APPLICATION SPECIFICATION SEE: AS-34900-0001  
CONTAINS: PRODUCT INTRODUCTION, PRODUCT SUMMARY, CONNECTOR ASSEMBLY, PACKAGING INFORMATION, CONNECTOR MATING, SERVICE INSTRUCTIONS, ELECTRICAL CONTINUITY CHECKING, CRIMPING, AND TROUBLESHOOTING.
  - b. PRODUCT SPECIFICATION SEE: PS-34900-0001  
CONTAINS: PRODUCT INTRODUCTION, PRODUCT SUMMARY, APPROVED TERMINALS, SINGLE WIRE SEALS, RATINGS (CURRENT, TEMPERATURE, SEALING, AND FLAMMABILITY), AND PRODUCT VALIDATION.
  - c. PACKAGING SPECIFICATION PER MOLEX DRAWING: PK-31301-898
  - d. PARTS MUST BE IN COMPLIANCE TO MOLEX CHEMICAL SUBSTANCES FOR PRODUCTS AND PACKAGING SPECIFICATIONS ES-40000-5016
  - e. DATA MUST BE SUBMITTED UNDER THE MOLEX PART NUMBER TO IMDS (COMPANY ID#13235)
  - f. DESIGNED TO MATE WITH DEVICE CONNECTION AS SPECIFIED IN BOM CHART USCAR INTERFACE DRAWINGS AND MODELS ARE AVAILABLE AT <http://ewcap.uscarteams.org/>.
2. DESIGN - MATERIALS:
  - a. SEE BOM TABLE
3. DESIGN - GEOMETRY:
  - a. THIS IS A 100% CAD GENERATED PART. THE CAD MATHEMATICAL DATA IS THE MASTER FOR THIS PART. FOR DIMENSIONAL OR ANY INFORMATION NOT SHOWN ON THIS DRAWING, ANALYZE THE CAD MODEL.
  - b. GEOMETRIC DIMENSIONS AND TOLERANCES PER ASME Y14.5M - 1994
  - c. EDGES AND UNDIMENSIONED DETAILS PER ISO13715
  - d. CORNERS SHOWN AS SHARP TO BE R 0.2 MAX
  - e. LETTERING SHALL BE 0.15 MAX RAISED IN 0.25 MAX RECESS PAD. THIS INCLUDES RECYCLING CODE, CAVITY ID, VENDOR IDENTIFICATION, AND CUSTOMER MATERIAL NUMBER.
  - f. VISUAL DEFECTS SHALL MEET COSMETIC STANDARD PS-45499-002 (Class B) CAD MODEL
- g. LASER MARKING:
  1. PART NUMBER
  2. DAY OF THE YEAR
  3. SHIFT
  4. YEAR

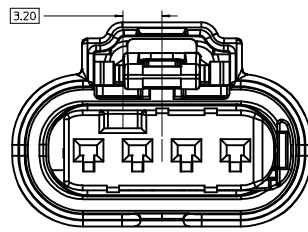
A12	RELEASE ALL KEYS SALEABLE
A11	RELEASE NON SIR SALEABLE
A10	PART #'S WITH NEW LATCH DESIGN SALEABLE
A9	PART #'S WITH NEW LATCH DESIGN SALEABLE
A8	ADDED NEW PART NUMBERS FOR LATCH IMPROVEMENT PARTS
A7	UPDATED 34900-6012 AND 34900-6012 TO SALEBLE
A6	UPDATED SHROUD LENGTH DIMENSION SCHEME
A5	BOM CORRECTIONS AND UPDATES
A4	BOM CORRECTIONS AND UPDATES
A3	NON SIR PART# OK TO TOOL
A2	BOM UPDATES FOR NON-SIR PART #
A1	1X6 MID LENGTH SHROUD OK TO TOOL
A	1X4 INLINE VIEWS ADDED
1	INITIAL RELEASE
REV	DESCRIPTION

<b>ENTER DESCRIPTION</b> ELC NO: UAU2016-1730 DRAWN: PATE01 CHKD: APPR: KOZEWSKI 2016/05/31 2016/05/31	<b>QUALITY SYMBOLS</b> ∇=0 ∇=0 ∇=0	<b>GENERAL TOLERANCES (UNLESS SPECIFIED)</b> mm      INCH 4 PLACES ± --- ± --- 3 PLACES ± --- ± --- 2 PLACES ± 0.10 ± --- 1 PLACE ± 0.20 ± --- 0 PLACE ± 0.50 ± --- ANGULAR ± 3 ° DRAFT WHERE APPLICABLE MUST REMAIN WITHIN DIMENSIONS	<b>DIMENSION STYLE</b> MM ONLY DRAWN BY: MYANSLAMBROU DATE: 2012/05/03 CHECKED BY: DATE:	SCALE: 3:1 DESIGN UNITS: METRIC THIRD ANGLE PROJECTION	TITLE: 12MM 1X4, 1X6 RECP.T. SEALED ASSEMBLY CABLE SEAL <b>molex</b>	APPROVED BY: GGA DATE: 2012/12/13	MATERIAL NO. <b>SEE TABLE</b>	DOCUMENT NO. SD-34900-6001	SHEET NO. 1 OF 6

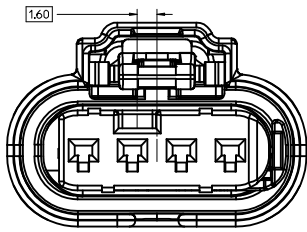
1x4 RECEPTACLE SEALED ASSEMBLY KEYING CONFIGURATIONS. FOR PART NUMBERS REFER TO BOM SHEET.



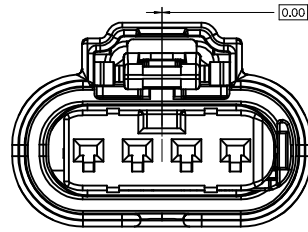
KEYING OPTION A



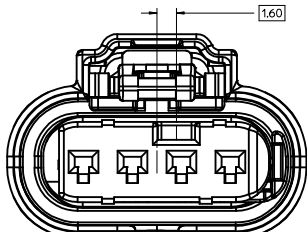
KEYING OPTION E



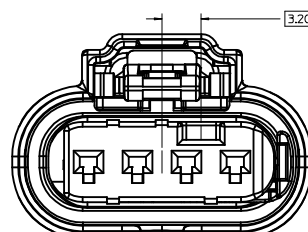
KEYING OPTION B



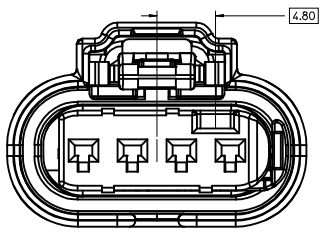
KEYING OPTION F



KEYING OPTION C



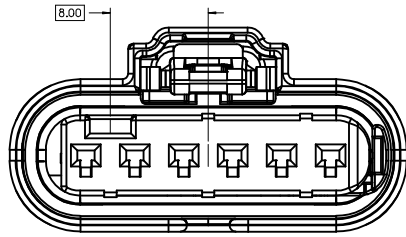
KEYING OPTION G



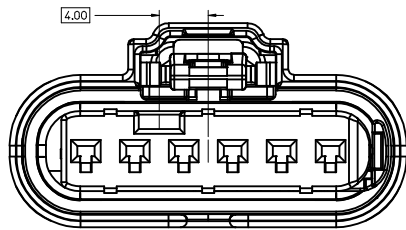
KEYING OPTION D

<b>ENTER DESCRIPTION</b> EEC NO: UAU2016-1730 DRAWN/PATE01 2016/05/23 CHKD: APPR:KIEKOSKI 2016/05/31 REV:	QUALITY SYMBOLS	GENERAL TOLERANCES (UNLESS SPECIFIED)	DIMENSION STYLE	SCALE	DESIGN UNITS	THIRD ANGLE PROJECTION	
	▽=0	4 PLACES ± mm ± INCH	MM ONLY	5:1	METRIC	☉	
	▽=0	3 PLACES ± 0.10 ± ---					
	▽=0	1 PLACE ± 0.20 ± ---					
		0 PLACE ± 0.50 ±					
		ANGULAR ± 3 °					
		DRAFT WHERE APPLICABLE MUST REMAIN WITHIN DIMENSIONS					
			DRAWN BY	DATE	TITLE		
			MYANSLAMBROU	2012/05/03	12MM 1X4, 1X6 RECPT. SEALED ASSEMBLY CABLE SEAL		
			CHECKED BY	DATE			
			GGG	2012/12/13			
			APPROVED BY	DATE			
			SEE BOM				
			MATERIAL NO.	DOCUMENT NO.			
				SD-34900-6001			
			SIZE				
			D				
			THIS DRAWING CONTAINS INFORMATION THAT IS PROPRIETARY TO MOLEX INCORPORATED AND SHOULD NOT BE USED WITHOUT WRITTEN PERMISSION				
						SHEET NO. 2 OF 6	

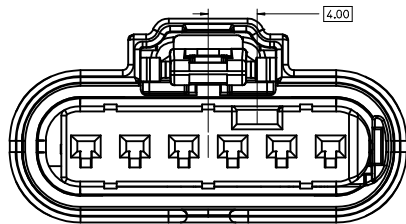
1x6 RECEPTACLE SEALED ASSEMBLY KEYING CONFIGURATIONS. FOR PART NUMBERS REFER TO BOM SHEET.



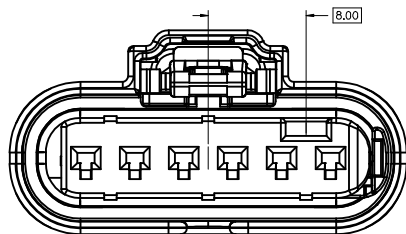
KEYING OPTION A



KEYING OPTION B



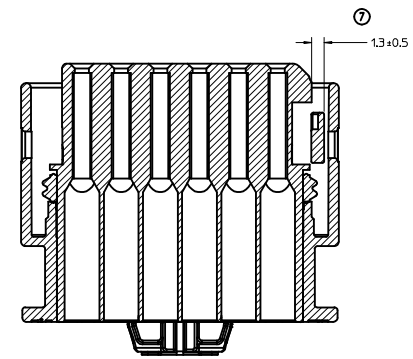
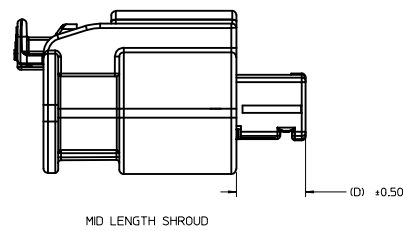
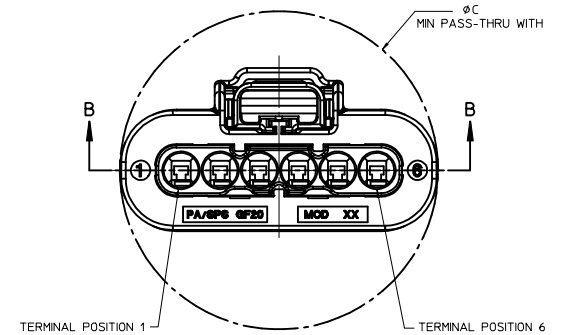
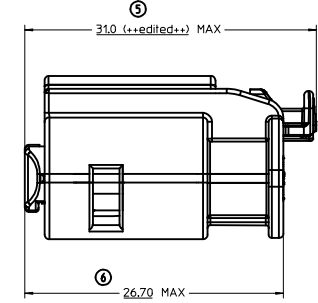
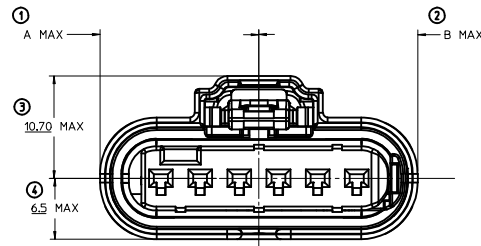
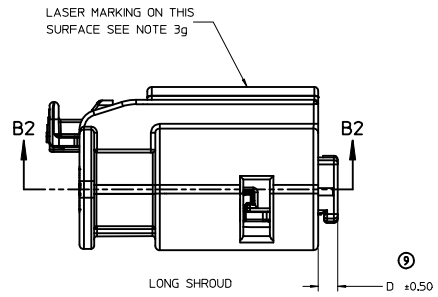
KEYING OPTION C



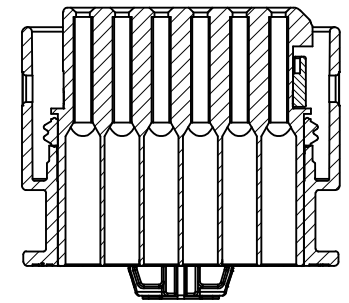
KEYING OPTION D

SEE SHEET 1 ELEC NO. UAU2016-1730 DRAWN/PATE01 2016/05/23 CHKD: APPR:KIEKOSKI 2016/05/31 REV DESCRIPTION	QUALITY SYMBOLS ▽=0 ▽=0 ▽=0		GENERAL TOLERANCES (UNLESS SPECIFIED) mm INCH 4 PLACES ± --- ± --- 3 PLACES ± --- ± --- 2 PLACES ± 0.10 ± --- 1 PLACE ± 0.20 ± --- 0 PLACE ± 0.50 ±		DIMENSION STYLE MM ONLY DRAWN BY DATE MYANSLAMBROU 2012/05/03 CHECKED BY DATE		SCALE 5:1 DESIGN UNITS METRIC THIRD ANGLE PROJECTION		TITLE 12MM 1X4, 1X6 RECPT. SEALED ASSEMBLY CABLE SEAL	
	ANGULAR ± 3 ° DRAFT WHERE APPLICABLE MUST REMAIN WITHIN DIMENSIONS		APPROVED BY DATE GGA 2012/12/13		MATERIAL NO. SEE BOM		DOCUMENT NO. SD-34900-6001		SHEET NO. 3 OF 6	
	THIS DRAWING CONTAINS INFORMATION THAT IS PROPRIETARY TO MOLEX INCORPORATED AND SHOULD NOT BE USED WITHOUT WRITTEN PERMISSION									
	SIZE D									

RECEPTACLE SEALED ASSEMBLY



SECTION B-B  
INDEPENDENT SECONDARY LOCK (ISL)  
SHOWN IN THE PRE-STAGED POSITION



SECTION B2-B2  
INDEPENDENT SECONDARY LOCK (ISL)  
SHOWN IN THE FINAL-LOCK POSITION

	A	B	C	D
1x6 MID LENGTH SHROUD	16.5	16.5	33.0	6.70
1x4 MID LENGTH SHROUD	16.5	16.5	25.0	6.70
1x6 LONG SHROUD	16.5	16.5	33.0	2.00
1x4 LONG SHROUD	12.5	12.5	25.0	2.00
DESCRIPTION	A	B	C	D

CHARTED DIMENSIONS

<b>ENTER DESCRIPTION</b> EEC NO: UAU2016-1730 DRAWN: PATE01 CHKD: APPR: KIEKSKI REV: A12	QUALITY SYMBOLS ∇=0 ∇=0 ∇=0	GENERAL TOLERANCES (UNLESS SPECIFIED) mm INCH 4 PLACES ± --- ± --- 3 PLACES ± --- ± --- 2 PLACES ± 0.10 ± --- 1 PLACE ± 0.20 ± --- 0 PLACE ± 0.50 ± --- ANGULAR ± 3 ° DRAFT WHERE APPLICABLE MUST REMAIN WITHIN DIMENSIONS	DIMENSION STYLE MM ONLY SCALE 4:1 DESIGN UNITS METRIC THIRD ANGLE PROJECTION	DRAWN BY MYANSLAMBROU DATE 2012/05/03 CHECKED BY DATE APPROVED BY GGA DATE 2012/12/13	TITLE 12MM 1X4, 1X6 RECPT. SEALED ASSEMBLY CABLE SEAL <b>molex</b> DOCUMENT NO. SD-34900-6001 SHEET NO. 4 OF 6
	MATERIAL NO. SEE BOM		MATERIAL NO. SEE BOM		INCORPORATED AND SHOULD NOT BE USED WITHOUT WRITTEN PERMISSION
	SIZE D		THIS DRAWING CONTAINS INFORMATION THAT IS PROPRIETARY TO MOLEX		INCORPORATED AND SHOULD NOT BE USED WITHOUT WRITTEN PERMISSION
	THIS DRAWING CONTAINS INFORMATION THAT IS PROPRIETARY TO MOLEX				

1x4 RECEPTACLE SEALED ASSEMBLY BOM SHEET 1

KEY OPTION	CONNECTOR HOUSING COLOR	TERMINAL HOUSING COLOR	OUTER HOUSING SHROUD LENGTH	ASSEMBLY PART NUMBER	CHMB	A	B	C	D	E	F	G	CONCEPT	1	2
KEY OPTION G	BLACK	LIGHT GRAY	MID LENGTH	34900-4136									CONCEPT	1	2
KEY OPTION F	BLACK	BLACK	MID LENGTH	34900-4135							F		CONCEPT	1	2
KEY OPTION E	BLACK	DARK GRAY	MID LENGTH	34900-4134						E			CONCEPT	1	2
KEY OPTION D	BLACK	LIGHT GRAY	MID LENGTH	34900-4133						D			CONCEPT	1	2
KEY OPTION C	BLACK	DARK GRAY	MID LENGTH	34900-4132						C			CONCEPT	1	2
KEY OPTION B	BLACK	STONE GRAY	MID LENGTH	34900-4131						B			CONCEPT	1	2
KEY OPTION A	BLACK	BLACK	MID LENGTH	34900-4130						A			CONCEPT	1	2
KEY OPTION G	BLACK	LIGHT GRAY	LONG	34900-4126		CHB						G	SALEABLE	1	2
KEY OPTION F	BLACK	BLACK	LONG	34900-4125		CHB						F	SALEABLE	1	2
KEY OPTION E	BLACK	DARK GRAY	LONG	34900-4124		CHB					E		SALEABLE	1	2
KEY OPTION D	BLACK	LIGHT GRAY	LONG	34900-4123		CHB				D			SALEABLE	1	2
KEY OPTION C	BLACK	DARK GRAY	LONG	34900-4122		CHB				C			SALEABLE	1	2
KEY OPTION B	BLACK	STONE GRAY	LONG	34900-4121		CHB				B			SALEABLE	1	2
KEY OPTION A	BLACK	BLACK	LONG	34900-4120		CHB				A			SALEABLE	1	2
KEY OPTION G	YELLOW	LIGHT GRAY	LONG	34900-4116		CHY						G	SALEABLE	1	2
KEY OPTION F	YELLOW	BLACK	LONG	34900-4115		CHY						F	SALEABLE	1	2
KEY OPTION E	YELLOW	DARK GRAY	LONG	34900-4114		CHY					E		SALEABLE	1	2
KEY OPTION D	YELLOW	LIGHT GRAY	LONG	34900-4113		CHY				D			SALEABLE	1	2
KEY OPTION C	YELLOW	DARK GRAY	LONG	34900-4112		CHY				C			SALEABLE	1	2
KEY OPTION B	YELLOW	STONE GRAY	LONG	34900-4111		CHY				B			SALEABLE	1	2
KEY OPTION A	YELLOW	BLACK	LONG	34900-4110		CHY				A			SALEABLE	1	2
KEY OPTION G	BLACK	LIGHT GRAY	LONG	34900-4026		CHB						G	OBSOLETE	1	2
KEY OPTION F	BLACK	BLACK	LONG	34900-4025		CHB						F	OBSOLETE	1	2
KEY OPTION E	BLACK	DARK GRAY	LONG	34900-4024		CHB					E		OBSOLETE	1	2
KEY OPTION D	BLACK	LIGHT GRAY	LONG	34900-4023		CHB				D			OBSOLETE	1	2
KEY OPTION C	BLACK	DARK GRAY	LONG	34900-4022		CHB				C			OBSOLETE	1	2
KEY OPTION B	BLACK	STONE GRAY	LONG	34900-4021		CHB				B			OBSOLETE	1	2
KEY OPTION A	BLACK	BLACK	LONG	34900-4020		CHB				A			OBSOLETE	1	2
KEY OPTION G	YELLOW	LIGHT GRAY	LONG	34900-4016		CHY						G	OBSOLETE	1	2
KEY OPTION F	YELLOW	BLACK	LONG	34900-4015		CHY						F	OBSOLETE	1	2
KEY OPTION E	YELLOW	DARK GRAY	LONG	34900-4014		CHY					E		OBSOLETE	1	2
KEY OPTION D	YELLOW	LIGHT GRAY	LONG	34900-4013		CHY				D			OBSOLETE	1	2
KEY OPTION C	YELLOW	DARK GRAY	LONG	34900-4012		CHY				C			OBSOLETE	1	2
KEY OPTION B	YELLOW	STONE GRAY	LONG	34900-4011		CHY				B			OBSOLETE	1	2
KEY OPTION A	YELLOW	BLACK	LONG	34900-4010		CHY				A			OBSOLETE	1	2
ASSEMBLY DESCRIPTION	CONNECTOR HOUSING COLOR	TERMINAL HOUSING COLOR	OUTER HOUSING SHROUD LENGTH	ASSEMBLY PART NUMBER									PRODUCTION TOOL STATUS	COMMENTS	DESIGNED TO MATE WITH DEVICE CONNECTION

ABBREVIATION	COMPONENT
CHY	CONNECTOR HOUSING YELLOW
CHB	CONNECTOR HOUSING BLACK
CHBM	CONNECTOR HOUSING BLACK MID SHROUD
A	TERMINAL HOUSING KEY A
B	TERMINAL HOUSING KEY B
C	TERMINAL HOUSING KEY C
D	TERMINAL HOUSING KEY D
E	TERMINAL HOUSING KEY E
F	TERMINAL HOUSING KEY F
G	TERMINAL HOUSING KEY G
CPA	CPA
ISL	ISL
RING SEAL	RING SEAL
1	USCAR INTERFACE 120-S-004-1-202 SEE NOTE 1f FOR WEBSITE
2	MOLEX INLINE BLADE CONNECTOR SD-34899-6001

DESCRIPTION	COLOR	MATERIAL	COMMENTS
RING SEAL	LIGHT BLUE	INHERENTLY LUBRICATED SILICONE	
ISL	NATURAL	SPS/NYLON GF20	
CPA	RED	PBT GF30	
TERMINAL HOUSING KEYING OPTION G	LIGHT GRAY	SPS/NYLON GF20	
TERMINAL HOUSING KEYING OPTION F	BLACK	SPS/NYLON GF20	
TERMINAL HOUSING KEYING OPTION E	DARK GRAY	SPS/NYLON GF20	
TERMINAL HOUSING KEYING OPTION D	LIGHT GRAY	SPS/NYLON GF20	
TERMINAL HOUSING KEYING OPTION C	DARK GRAY	SPS/NYLON GF20	
TERMINAL HOUSING KEYING OPTION B	STONE GRAY	SPS/NYLON GF20	
TERMINAL HOUSING KEYING OPTION A	BLACK	SPS/NYLON GF20	
MID LENGTH CONNECTOR HOUSING	BLACK	SPS/NYLON GF20	
CONNECTOR HOUSING	BLACK	SPS/NYLON GF20	UPDATED LATCH
CONNECTOR HOUSING	YELLOW	SPS/NYLON GF20	UPDATED LATCH
CONNECTOR HOUSING	BLACK	SPS/NYLON GF20	
CONNECTOR HOUSING	YELLOW	SPS/NYLON GF20	

<b>ENTER DESCRIPTION</b> ELEC NO: UAU2016-1730 DRAWN/PAT01 CHYD: APPR:K0EKSGL 2016/05/12 2016/05/31 A12	QUALITY SYMBOLS ∇=0 ∇=0 ∇=0	GENERAL TOLERANCES (UNLESS SPECIFIED) 4 PLACES ± mm INCH 3 PLACES ± mm INCH 2 PLACES ± 0.10 mm INCH 1 PLACE ± 0.20 mm INCH 0 PLACE ± 0.50 mm INCH ANGULAR ± 3 ° DRAFT WHERE APPLICABLE MUST REMAIN WITHIN DIMENSIONS	DIMENSION STYLE MM ONLY DRAWN BY DATE MYANSLAMBROU 2012/05/03 CHECKED BY DATE APPROVED BY DATE GGA 2012/12/13	SCALE 5:1 DESIGN UNITS METRIC THIRD ANGLE PROJECTION	TITLE 12MM 1X4, 1X6 RECP. SEALED ASSEMBLY CABLE SEAL molex	MATERIAL NO. SEE BOM DOCUMENT NO. SD-34900-6001	SHEET NO. 5 OF 6
	THIS DRAWING CONTAINS INFORMATION THAT IS PROPRIETARY TO MOLEX INCORPORATED AND SHOULD NOT BE USED WITHOUT WRITTEN PERMISSION						
	SIZE D						

1x6 RECEPTACLE SEALED ASSEMBLY BOM SHEET 1

KEY OPTION D	BLACK	STONE GRAY	MID LENGTH	34900-6190				CHMB		D	SALEABLE						3
KEY OPTION C	BLACK	DARK GRAY	MID LENGTH	34900-6121				CHMB		C	SALEABLE						3
KEY OPTION B	BLACK	LIGHT GRAY	MID LENGTH	34900-6128				CHMB	B		SALEABLE						3
KEY OPTION A	BLACK	BLACK	MID LENGTH	34900-6119				CHMB	A		SALEABLE						3
KEY OPTION D	BLACK	STONE GARY	LONG	34900-6143				CHLB		D	SALEABLE		1	2			
KEY OPTION C	BLACK	DARK GRAY	LONG	34900-6142				CHLB		C	SALEABLE		1	2			
KEY OPTION B	BLACK	LIGHT GRAY	LONG	34900-6141				CHLB	B		SALEABLE		1	2			
KEY OPTION A	BLACK	BLACK	LONG	34900-6140				CHLB	A		SALEABLE		1	2			
KEY OPTION D	YELLOW	STONE GRAY	LONG	34900-6113				CHLY		D	SALEABLE		1	2			
KEY OPTION C	YELLOW	DARK GRAY	LONG	34900-6112				CHLY		C	SALEABLE		1	2			
KEY OPTION B	YELLOW	LIGHT GRAY	LONG	34900-6111				CHLY	B		SALEABLE		1	2			
KEY OPTION A	YELLOW	BLACK	LONG	34900-6110				CHLY	A		SALEABLE		1	2			
KEY OPTION D	BLACK	STONE GRAY	MID LENGTH	34900-6030				CHMB		D	OBSOLETE						3
KEY OPTION C	BLACK	DARK GRAY	MID LENGTH	34900-6021				CHMB		C	OBSOLETE						3
KEY OPTION B	BLACK	LIGHT GRAY	MID LENGTH	34900-6028				CHMB	B		OBSOLETE						3
KEY OPTION A	BLACK	BLACK	MID LENGTH	34900-6019				CHMB	A		OBSOLETE						3
KEY OPTION D	BLACK	STONE GARY	LONG	34900-6043				CHLB		D	OBSOLETE		1	2			
KEY OPTION C	BLACK	DARK GRAY	LONG	34900-6042				CHLB		C	OBSOLETE		1	2			
KEY OPTION B	BLACK	LIGHT GRAY	LONG	34900-6041				CHLB	B		OBSOLETE		1	2			
KEY OPTION A	BLACK	BLACK	LONG	34900-6040				CHLB	A		OBSOLETE		1	2			
KEY OPTION D	YELLOW	STONE GRAY	LONG	34900-6013				CHLY		D	OBSOLETE		1	2			
KEY OPTION C	YELLOW	DARK GRAY	LONG	34900-6012				CHLY		C	OBSOLETE		1	2			
KEY OPTION B	YELLOW	LIGHT GRAY	LONG	34900-6011				CHLY	B		OBSOLETE		1	2			
KEY OPTION A	YELLOW	BLACK	LONG	34900-6010				CHLY	A		OBSOLETE		1	2			
ASSEMBLY DESCRIPTION	CONNECTOR HOUSING COLOR	TERMINAL CAVITY COLOR	OUTER HOUSING SHROUD LENGTH	ASSEMBLY PART NUMBER					A B C D		PRODUCTION TOOL STATUS	COMMENTS	DESIGNED TO MATE WITH DEVICE CONNECTION				3

RING SEAL	BURNT RED	INHERENTLY LUBRICATED SILICONE	
ISL	NATURAL	SPS/NYLON GF20	
CPA	RED	PBT GF30	
TERMINAL HOUSING KEYING OPTION D	STONE GRAY	SPS/NYLON GF20	
TERMINAL HOUSING KEYING OPTION C	DARK GRAY	SPS/NYLON GF20	
TERMINAL HOUSING KEYING OPTION B	LIGHT GRAY	SPS/NYLON GF20	
TERMINAL HOUSING KEYING OPTION A	BLACK	SPS/NYLON GF20	
CONNECTOR HOUSING MID LENGTH	BLACK	SPS/NYLON GF20	UPDATED LATCH
CONNECTOR HOUSING LONG	BLACK	SPS/NYLON GF20	UPDATED LATCH
CONNECTOR HOUSING LONG	YELLOW	SPS/NYLON GF20	UPDATED LATCH
CONNECTOR HOUSING MID LENGTH	BLACK	SPS/NYLON GF20	
CONNECTOR HOUSING LONG	BLACK	SPS/NYLON GF20	
CONNECTOR HOUSING LONG	YELLOW	SPS/NYLON GF20	

DESCRIPTION	COLOR	MATERIAL	COMMENTS
BOM/APPLICABLE COMPONENTS TABLE			

LEGEND TABLE	
ABBREVIATION	COMPONENT
CHLY	CONNECTOR HOUSING LONG YELLOW
CHLB	CONNECTOR HOUSING LONG BLACK
CHMB	CONNECTOR HOUSING MEDIUM BLACK
A	TERMINAL HOUSING KEY A
B	TERMINAL HOUSING KEY B
C	TERMINAL HOUSING KEY C
D	TERMINAL HOUSING KEY D
CPA	CPA
ISL	ISL
RING SEAL	RING SEAL
1	USCAR INTERFACE 120-S-006-1-Z02 SEE NOTE 1f FOR WEBSITE
2	MOLEX INLINE BLADE CONNECTOR SD-34899-6001
3	USCAR INTERFACE 120-S-006-1-Z04 SEE NOTE 1f FOR WEBSITE

<b>ENTER DESCRIPTION</b> ELEC NO: UAU2016-1730 DRAWN/PAT01 CHKD: APPR:K0EKGSKI 2016/05/23 2016/05/31 A12	QUALITY SYMBOLS ∇=0 ∇=0 ∇=0	GENERAL TOLERANCES (UNLESS SPECIFIED) 4 PLACES ± --- ± --- 3 PLACES ± --- ± --- 2 PLACES ± 0.10 ± --- 1 PLACE ± 0.20 ± --- 0 PLACE ± 0.50 ± --- ANGULAR ± 3 ° DRAFT WHERE APPLICABLE MUST REMAIN WITHIN DIMENSIONS	DIMENSION STYLE MM ONLY DRAWN BY DATE MYANSLAMBROU 2012/05/03 CHECKED BY DATE APPROVED BY DATE GGA 2012/12/13	SCALE 2:1 DESIGN UNITS METRIC THIRD ANGLE PROJECTION	TITLE 12MM 1X4, 1X6 RECP.T. SEALED ASSEMBLY CABLE SEAL <b>molex</b> DOCUMENT NO. SD-34900-6001	SHEET NO. 6 OF 6
	MATERIAL NO. SEE TABLE					
	THIS DRAWING CONTAINS INFORMATION THAT IS PROPRIETARY TO MOLEX INCORPORATED AND SHOULD NOT BE USED WITHOUT WRITTEN PERMISSION					
	SIZE D					