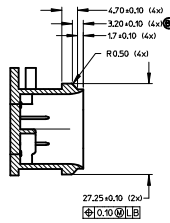
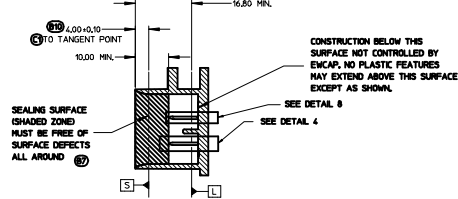
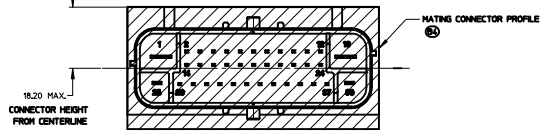
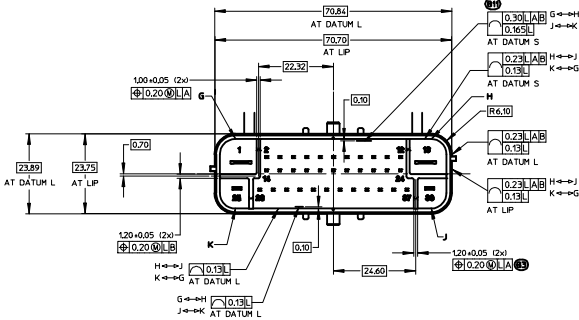
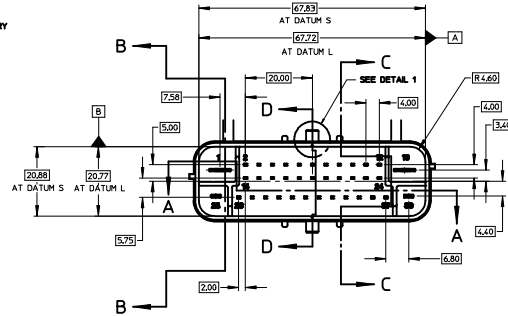
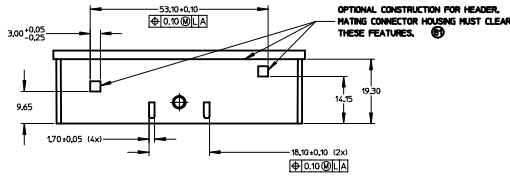


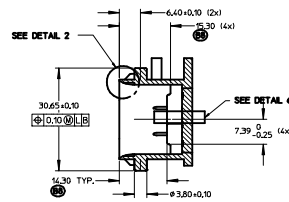
- NOTES:
1. ALL DIMENSIONS SHOWN IN MILLIMETERS.
 2. DIMENSIONING AND TOLERANCING PER ASME Y14.5-1994.
 3. RADIUS ON ALL CORNERS SHOWN SHARP OR ALL UNSPECIFIED RADII 0.25 EXCEPT AS NOTED.
 4. REFER TO "SAE/USCAR-12 CONNECTOR DESIGN GUIDELINES" FOR ADDITIONAL INFORMATION.
 5. 0.25 DEGREE DRAFT ON ALL INSIDE SURFACES, UNLESS OTHERWISE SPECIFIED.
 6. STANDARD COLORS FOR POLARIZATION - DEVIATION REQUIRES APPROVAL OF AUTHORIZED PERSON.
 7. REFER TO DRAWING ENCAP-001 FOR TERMINAL GEOMETRY AND PLATING DETAILS.



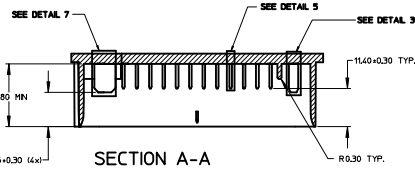
SECTION C-C



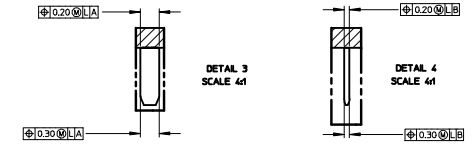
SECTION B-B



SECTION D-D

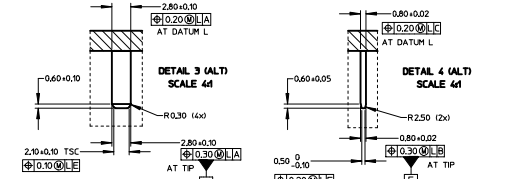


SECTION A-A

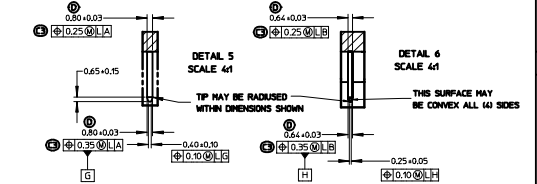


2.80MM BLADE DETAIL

SEE DRAWING ENCAP-001 FOR DETAILS

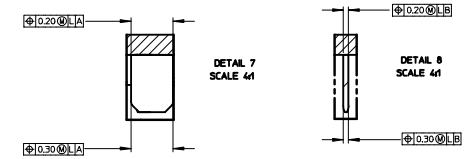


2.80MM BLADE DETAIL (ALTERNATE) B2



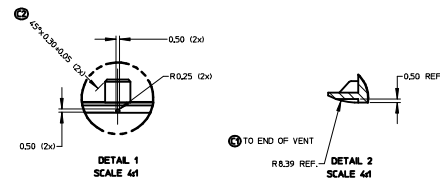
0.80X0.64MM BLADE DETAIL

(ABS INTERFACE ONLY)



6.30MM BLADE DETAIL

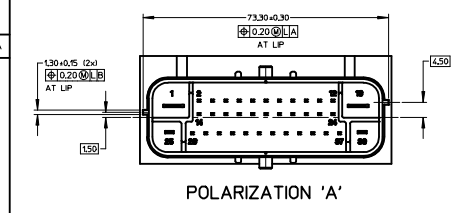
SEE DRAWING ENCAP-001 FOR DETAILS



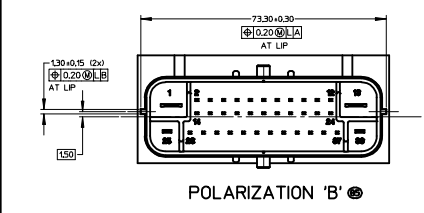
DETAIL 1 SCALE 4:1

DETAIL 2 SCALE 4:1

999-S-038-C01	C	BROWN
999-S-038-001	B	GRAY
999-S-038-A01	A	BLACK
USCAR PART NO.	OPTION	COLOR



POLARIZATION 'A'



POLARIZATION 'B'

TO BE DETERMINED

POLARIZATION 'C'



059	D	REVISED 0.64mm x 0.60mm PIN SIZE TOLERANCE ±0.03	03292005	MCD	BBW
C5		REVISED 0.64mm POS. 0.25 BASE/0.35 TIP			
C2		ADDED CHAMFER DIMENSION 45°±0.30±0.05			
0591	C1	CLARIFIED LOCATION OF TANGENT POINT	10252004	MCD	BBW
B11		INCREASED TOLERANCE ON LONG SIDES			
B9		DIMENSION FEATURES TO FRONT OF SHROUD			
B8		REVISED GD&T ON 0.80X0.64 BLADE			
B7		ADDED CIRCUIT DIVIDER HEIGHT			
B6		ADDED SEALING AREA DESCRIPTION			
B5		REMOVED ENCAP FROM TITLE BLOCK			
B4		ADDED POLARIZATION 'B'			
B3		ADDED MATING CONN. PROFILE			
B2		CHANGED DIVIDER WALL TOLERANCE TO 0.20			
B1		ADDED OPTIONAL BLADE CONSTRUCTION			
0031	B1	ADDED STANDOFF RIBS	12022003	MCD	BBW
0031	A	RELEASED	08252003	MCD	BBW
0031	LET	REVISION RECORD	DATE	DWN	CHK
TOLERANCES UNLESS OTHERWISE SPECIFIED					
DIMENSIONS ARE IN MILLIMETERS					
ANGLES °'					
X: H/25 Y: H/25					
THIRD ANGLE PROJECTION					
SCALE	2:1	DRAWN BY	DIANEELS	CHECKED BY	WILSON
DATE	08/25/2003				
30 CIRCUIT ABS CONNECTOR INTERFACE -OPTION 2					
REV	1	ISSUED FOR	DATE	BY	REVISION LEVEL
0031	1	999-S-038-3-201		E	

TABLE OF CONTENTS

SHEET NO.	SHEET DESCRIPTION
1	NOTES AND BOM
2	CONFIGURATIONS
3	RECEPTACLE CONNECTOR ASSEMBLY
4	WIRE SHIELD

NOTES: VALID UNLESS OTHERWISE SPECIFIED

- CONNECTOR TO BE SHIPPED WITH TPA IN PRE-LOAD POSITION AS SHOWN IN SECTION Z-Z.
- ALL TEXT TO BE CLEARLY LEGIBLE AND 1.50MM MIN. HEIGHT. MARKING ORIENTATION MAY BE PARALLEL TO THE LENGTH OF THE PART, AS SHOWN, OR PERPENDICULAR TO THE LENGTH OF THE PART.

DATE CODE DESCRIPTION:

- 1st THROUGH 3rd DIGIT = "DAY#" OF THE CALENDAR YEAR. (EXAMPLE FEB. 3rd = '034')
- LAST DIGIT = LAST DIGIT OF CALENDAR YEAR. (EXAMPLE: 2000 = '0')
- SERIAL NUMBER DESCRIPTION:
 - FIRST CHARACTER "M." = ASSEMBLY MACHINE NUMBER
 - FOLLOWING NUMBER STARTS AT "00001" AND IS RESET FOR EACH NEW "DAY#".
- MOLEX PART NUMBER:
 - SEE TABLE

3. DIMENSIONS NOT SHOWN CAN BE OBTAINED FROM THE ASSOCIATED MODEL.

4. GENERAL:

- APPLICATION SPECIFICATION SEE: AS-31380-001
 - CONTAINS: PRODUCT INTRODUCTION, PRODUCT SUMMARY, HARNESS ASSEMBLY, CONNECTOR MATING, AND SERVICE INSTRUCTIONS.
 - DESIGNED TO MATE WITH DEVICE AS SPECIFIED IN THE MATING INTERFACE DRAWINGS CHART.
 - DENOTES DRAWINGS THAT CAN BE ACCESSED AT <<http://ewcap.uscarteams.org/>>.

- PRODUCT SPECIFICATION SEE: PS-31380-100
 - CONTAINS: PRODUCT INTRODUCTION, PRODUCT SUMMARY, RATINGS (CURRENT AND TEMPERATURE), TERMINALS, WIRE DIAMETER RANGE, PRODUCT VALIDATION, AND PRODUCT DEVIATIONS.

- PACKAGING SPECIFICATION PER MOLEX DRAWING: PK-31300-550
- PARTS MUST BE IN COMPLIANCE TO MOLEX CHEMICAL SUBSTANCES FOR PRODUCTS AND PACKAGING SPECIFICATION: QEHS-699000-300

- DATA MUST BE SUBMITTED UNDER THE MOLEX PART NUMBER TO IMDS (COMPANY ID#13255)

5. DESIGN - MATERIALS:

- SEE BOM TABLE IN SD-31380-0002

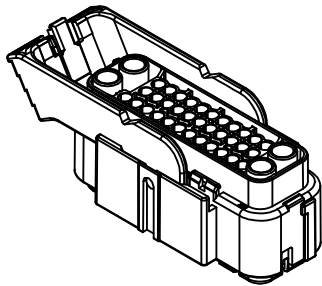
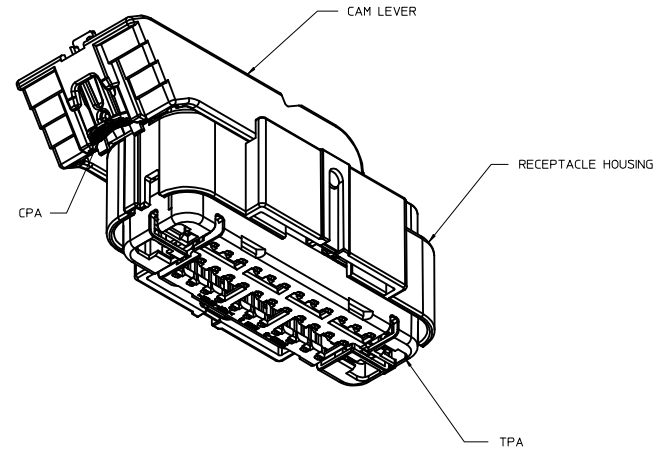
6. DESIGN - GEOMETRY:

- THE 3-D CAD DATA IS BASIC (WITHOUT TOLERANCE) AND MASTER FOR THIS PART WITH THE EXCEPTION OF UNDERLINED DIMENSIONS. DIMENSIONAL INFORMATION NOT SHOWN ON THIS DRAWING IS DEFINED BY THE DATA FILE AT ITS LATEST REVISION.
- GEOMETRIC DIMENSIONS AND TOLERANCES PER ASME Y14.5M-2009
- EDGES AND UNDIMENSIONED DETAILS PER ISO13715
- CORNERS SHOWN AS SHARP TO BE R 0.2 MAX.
- VISUAL DEFECTS SHALL MEET COSMETIC STANDARD PS-45499-002 (Class B).

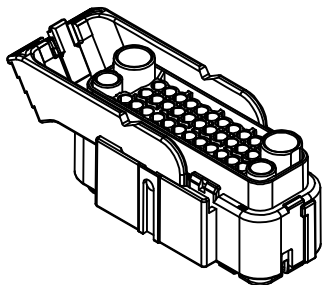
7. MUST BE USED WITH WIRE SHIELD - MOLEX PART NUMBER 31382-1001. WIRE SHIELD SHIPPED SEPARATELY.

MATING INTERFACE DRAWINGS

SERIES	INTERFACE DEFINITION
31380	*999-S-038-3-Z01
31381	*999-S-038-3-Z02



31381 SERIES



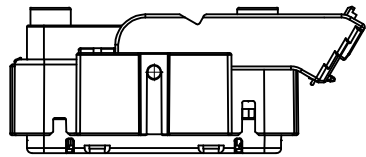
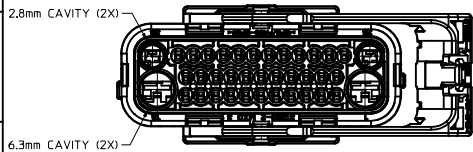
31380 SERIES

INSPECTION NUMBER LOG	
LAST NUMBER: 2	A INITIAL RELEASE
ADDED:	
REMOVED:	

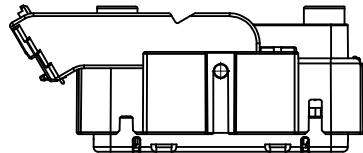
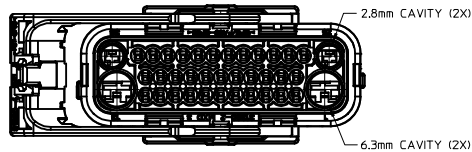
ENTER DESCRIPTION EC NO: UAU2014-1972 DRWNAFFOFTT 2014/06/26 CHKOKRIZZI 2014/06/27 APPR:VKOSHY 2014/06/30	QUALITY SYMBOLS	GENERAL TOLERANCES (UNLESS SPECIFIED)		DIMENSION STYLE		DRAWN BY DATE APPROFFITT 2014/06/26	CHECKED BY DATE	TITLE USCAR 38 WAY HYBRID RCPT SEALED ASSEMBLY	SCALE 1.5:1	DESIGN UNITS METRIC	THIRD ANGLE PROJECTION
		mm	INCH	MM ONLY	INCH						
REV DESCRIPTION	∇=0	4 PLACES	± .--- ± .---	APPROVED BY DATE VKOSHY 2014/06/30				DOCUMENT NO. SD-31380-0001	SHEET NO. 1 OF 4	molex THIS DRAWING CONTAINS INFORMATION THAT IS PROPRIETARY TO MOLEX INCORPORATED AND SHOULD NOT BE USED WITHOUT WRITTEN PERMISSION	
	∇=0	3 PLACES	± .--- ± .---								
	∇=0	2 PLACES	± 0.13 ± .---								
	∇=0	1 PLACE	± 0.25 ± .---								
		0 PLACE	± .--- ± .---								
		ANGULAR ± 1 °		SEE NOTE 5a.							
		DRAFT WHERE APPLICABLE MUST REMAIN WITHIN DIMENSIONS		SIZE 1							

SHEET DESCRIPTION

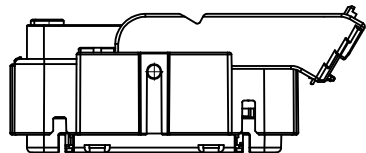
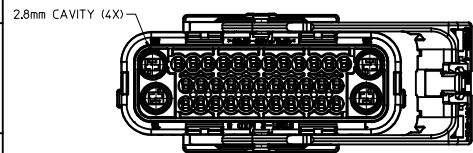
CONFIGURATIONS



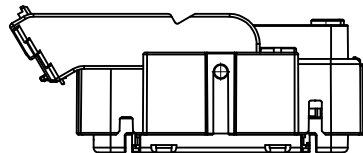
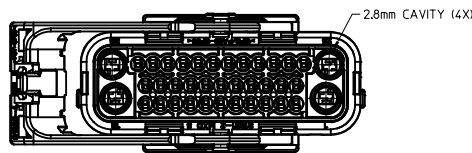
31380-10XX
TYPE II HARNESS ASSEMBLY
COUNTERCLOCKWISE LEVER THROW



31380-11XX
TYPE II HARNESS ASSEMBLY
CLOCKWISE LEVER THROW



31381-10XX
TYPE I HARNESS ASSEMBLY
COUNTERCLOCKWISE LEVER THROW



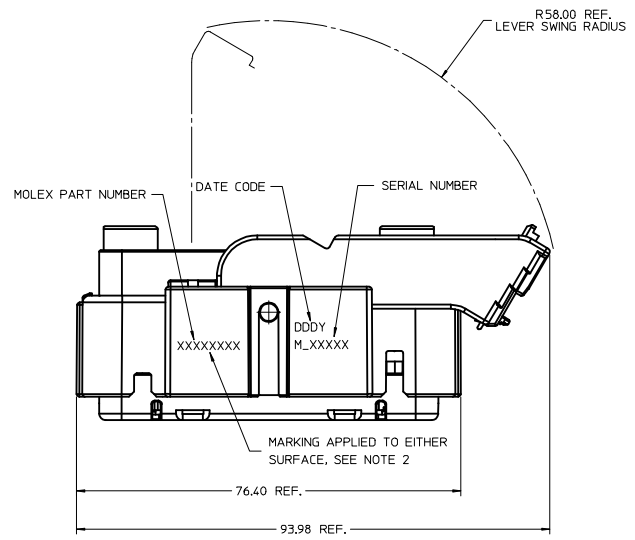
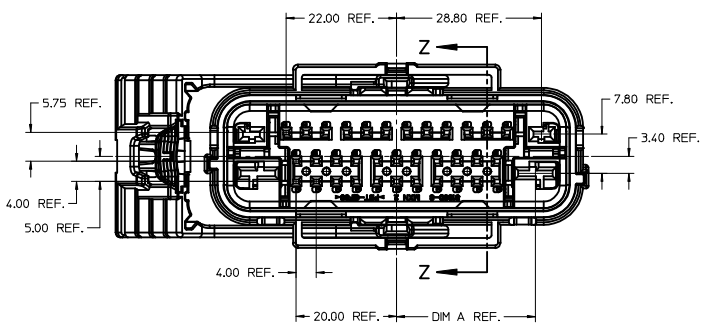
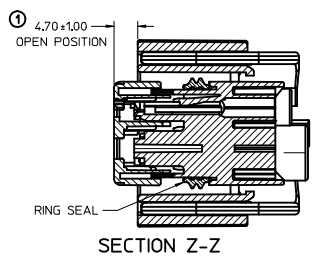
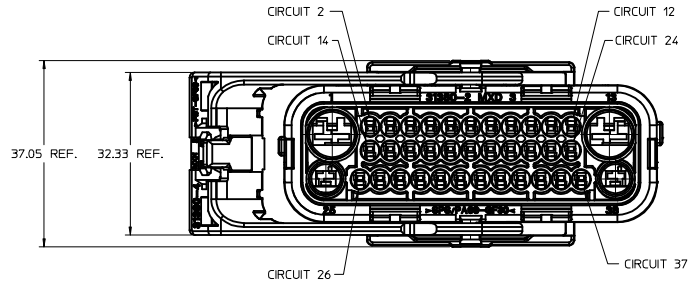
31381-11XX
TYPE I HARNESS ASSEMBLY
CLOCKWISE LEVER THROW

ENTER DESCRIPTION EDC NO: UAU2014-1972 DRAWN BY: APROFFITT 2014/06/26 CHECKED BY: CHYKORIZZI 2014/06/27 APPR: VKOSHY 2014/06/30 A	QUALITY SYMBOLS ▽=0 ▽=0 ▽=0	GENERAL TOLERANCES (UNLESS SPECIFIED)		DIMENSION STYLE MM ONLY		SCALE 1.5:1	DESIGN UNITS METRIC	THIRD ANGLE PROJECTION	
		4 PLACES ± --- ± --- 3 PLACES ± --- ± --- 2 PLACES ± 0.13 ± --- 1 PLACE ± 0.25 ± --- 0 PLACE ± --- ± ---	mm INCH	DRAWN BY APROFFITT	DATE 2014/06/26	TITLE USCAR 38 WAY HYBRID RCPT SEALED ASSEMBLY			
		ANGULAR ± 1 °		APPROVED BY VKOSHY	DATE 2014/06/30	DOCUMENT NO. SD-31380-0001			
		DRAFT WHERE APPLICABLE MUST REMAIN WITHIN DIMENSIONS		SEE NOTE 5a.		SHEET NO. 2 OF 4			

THIS DRAWING CONTAINS INFORMATION THAT IS PROPRIETARY TO MOLEX INCORPORATED AND SHOULD NOT BE USED WITHOUT WRITTEN PERMISSION

SHEET DESCRIPTION
RECEPTACLE CONNECTOR ASSEMBLY

CHARTED DIMENSIONS	
SERIES	DIMENSION
31380	A
31381	27.58
	27.90



ENTER DESCRIPTION EC NO: UAU2014-1972 DRW/APPROFIT: 2014/06/26 CHK/KR/IZI: 2014/06/27 APPR:VKOSHY: 2014/06/30	QUALITY SYMBOLS	GENERAL TOLERANCES (UNLESS SPECIFIED)	DIMENSION STYLE	SCALE	DESIGN UNITS	THIRD ANGLE PROJECTION
	▽=0	4 PLACES ± --- ± ---	MM ONLY	2:1	METRIC	
	▽=0	3 PLACES ± --- ± ---				
	▽=0	2 PLACES ± 0.13 ± ---				
▽=0	1 PLACE ± 0.25 ± ---					
▽=0	0 PLACE ± --- ± ---					
	ANGULAR ± 1°	DRAFT WHERE APPLICABLE MUST REMAIN WITHIN DIMENSIONS	SEE NOTE 5a.			

TITLE
USCAR 38 WAY HYBRID RCPT SEALED ASSEMBLY

molex

DOCUMENT NO. SD-31380-0001

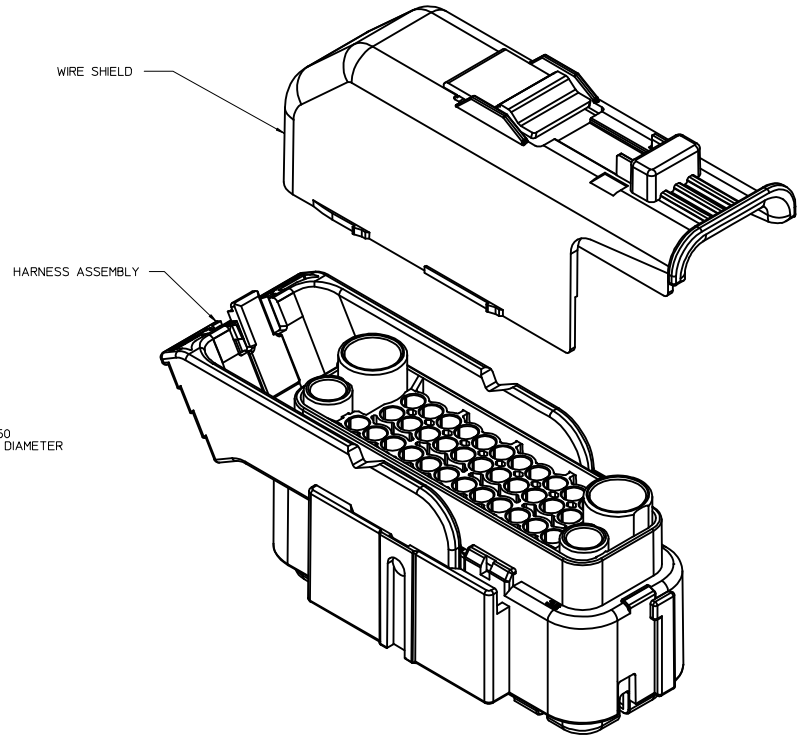
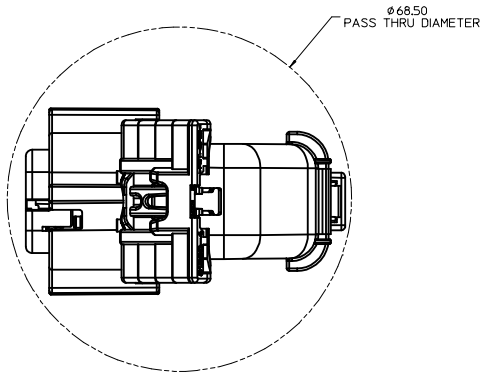
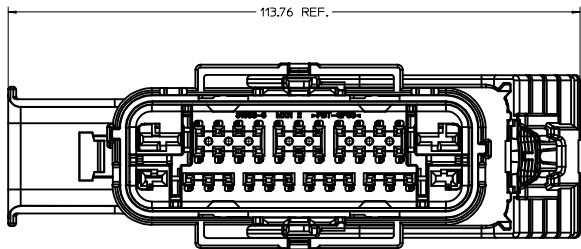
SHEET NO. 3 OF 4

THIS DRAWING CONTAINS INFORMATION THAT IS PROPRIETARY TO MOLEX INCORPORATED AND SHOULD NOT BE USED WITHOUT WRITTEN PERMISSION

SHEET DESCRIPTION
WIRE SHIELD

WIRESHIELD NOTES: VALID UNLESS OTHERWISE SPECIFIED

1. GENERAL:
 a. APPLICATION SPECIFICATION SEE: AS-31380-001
 -WIRE SHIELD (MOLEX PART NUMBER 31382-1001) MUST BE USED WITH HARNESS ASSEMBLY
 -WIRE SHIELD SHIPPED SEPARATELY
 -FOR ADDITIONAL INFORMATION SEE THE WIRE SHIELD COMPONENT DRAWING SD-31382-100.



ENTER DESCRIPTION EC NO: UAU2014-1972 DRWNG: APROFF/TT 2014/06/26 CHKDR: R/ZZI 2014/06/27 APPR: VKOSHY 2014/06/30	QUALITY SYMBOLS ∇=0 ∇=0 ∇=0	GENERAL TOLERANCES (UNLESS SPECIFIED)		DIMENSION STYLE MM ONLY		SCALE 2.5:1	DESIGN UNITS METRIC	THIRD ANGLE PROJECTION
		4 PLACES ± --- ± --- 3 PLACES ± --- ± --- 2 PLACES ± 0.13 ± --- 1 PLACE ± 0.25 ± --- 0 PLACE ± --- ± ---	mm INCH	DRAWN BY APROFF/TT	DATE 2014/06/26	TITLE USCAR 38 WAY HYBRID RCPT SEALED ASSEMBLY		
		ANGULAR ± 1 °		APPROVED BY VKOSHY	DATE 2014/06/30	DOCUMENT NO. SD-31380-0001		SHEET NO. 4 OF 4
		DRAFT WHERE APPLICABLE MUST REMAIN WITHIN DIMENSIONS		SEE NOTE 5a.		THIS DRAWING CONTAINS INFORMATION THAT IS PROPRIETARY TO MOLEX INCORPORATED AND SHOULD NOT BE USED WITHOUT WRITTEN PERMISSION		

