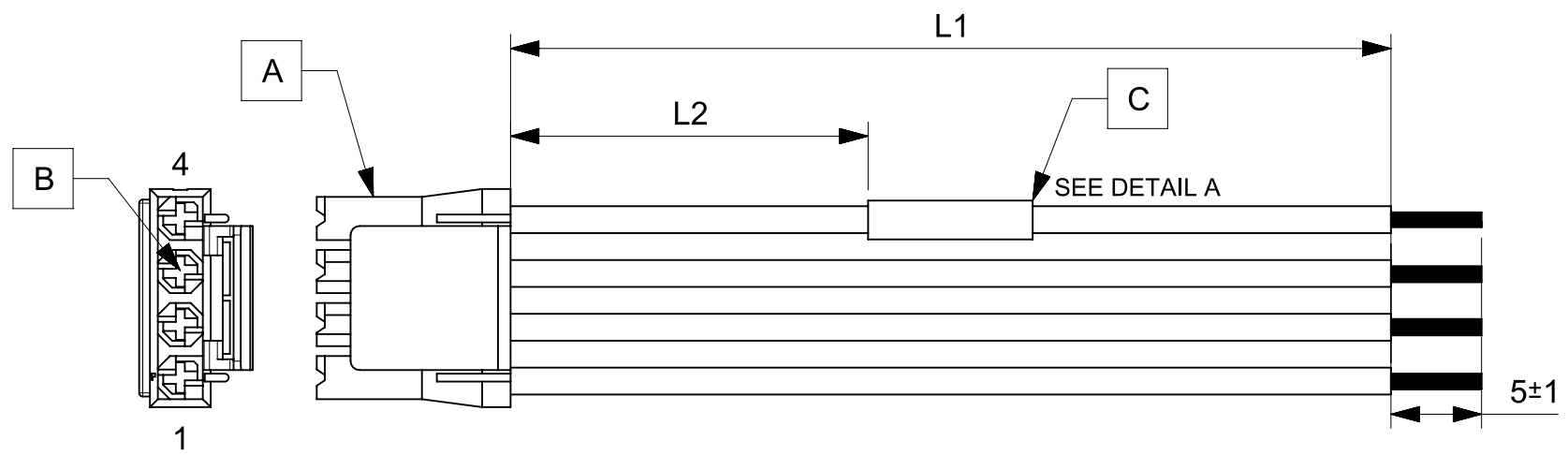


| ITEM | PART#      | DESCRIPTION                   | QTY | UOM |
|------|------------|-------------------------------|-----|-----|
| A    | 1726722004 | Super-Sabre Rcpt Hsg V-0 4ckt | 1   | PC  |
| B    | 1718250100 | Super-Sabre Female Crimp Tml  | 4   | PC  |
| C    | --         | PAPER PRINTED PAPER WHITE     | 1   | PC  |

| FROM | TO | DESCRIPTION                         | COLOR |
|------|----|-------------------------------------|-------|
| A1   | -- | 1X10AWG DISC MPPE BK UL11028 HOOKUP | BLACK |
| A2   | -- | 1X10AWG DISC MPPE BK UL11028 HOOKUP | BLACK |
| A3   | -- | 1X10AWG DISC MPPE BK UL11028 HOOKUP | BLACK |
| A4   | -- | 1X10AWG DISC MPPE BK UL11028 HOOKUP | BLACK |



| TABLE       |        |         |                               |
|-------------|--------|---------|-------------------------------|
| PART NUMBER | L1     | L2      | TITLE                         |
| 2160111041  | 150±8  | 63 REF  | SUPER SABRE R-S 150MM 4CKT Sn |
| 2160111042  | 300±10 | 138 REF | SUPER SABRE R-S 300MM 4CKT Sn |
| 2160111043  | 600±10 | 288 REF | SUPER SABRE R-S 600MM 4CKT Sn |

- NOTES**
1. Connector view shown is from mating side.
  2. Free ends must be stripped, twisted & tinned. The length of tinning is 5±1mm. Tinning dia must be 4mm Max.
  3. Label text must be 2mm max. in height with Arial font.
  4. Label must be wrapped on a single cable.

MOLEX P/N  
MOLEX  
BATCH WK/YR  
DETAIL A

| REVISION   |     |                 |         |
|------------|-----|-----------------|---------|
| DATE       | REV | DESCRIPTION     | CHANGER |
| 2020/04/07 | A   | INITIAL RELEASE | ARAJU   |

|   |   |   |                                       |  |                |
|---|---|---|---------------------------------------|--|----------------|
| FUNCTIONAL SYMBOLS<br>$\frac{E}{A} = 0$<br>$\frac{E}{E} = 0$<br>$\frac{E}{P} = 0$<br>DIVISIONAL SYMBOLS | THIS DRAWING CONTAINS INFORMATION THAT IS PROPRIETARY TO MOLEX ELECTRONIC TECHNOLOGIES, LLC AND SHOULD NOT BE USED WITHOUT WRITTEN PERMISSION |   | CURRENT REV DESC:                     |  |                |
|   | DIMENSION UNITS   | SCALE   | GENERAL TOLERANCES (UNLESS SPECIFIED) |  |                |
|   | mm  | NTS   | ANGULAR TOL ± °                       |  |                |
|   | 4 PLACES ±  |   | EC NO: 644416                         |  |                |
| 3 PLACES ±  |   | DRWN: ARAJU 2020/04/07  |                                       | PRODUCT CUSTOMER DRAWING<br>DOCUMENT NUMBER: 2160111041<br>DOC TYPE: PSD<br>DOC PART: 000<br>REVISION: A |                |
| 2 PLACES ±  |   | CHK'D: RDESAI01 2020/09/01  |                                       |  |                |
| 1 PLACE ±   |   | APPR: RDESAI01 2020/09/01   |                                       |  |                |
| 0 PLACES ±  |   | INITIAL REVISION: DRWN: ARAJU 2020/04/07<br>APPR: RDESAI01 2020/09/01 |                                       | MATERIAL NUMBER: SEE TABLE<br>CUSTOMER: GENERAL MARKET<br>SHEET NUMBER: 1 OF 1                           |                |
| DRAFT WHERE APPLICABLE MUST REMAIN WITHIN DIMENSIONS  |   | THIRD ANGLE PROJECTION  | DRAWING: A4-SIZE                      |  | SERIES: 216011 |