

PLEASE CHECK WWW.MOLEX.COM FOR LATEST PART INFORMATION

Part Number: [2069962201](#)
Status: **Active**
Overview: CP Wire-to-Board and Wire-to-Wire Connector Systems
Description: CP-4.5 Receptacle Housing, 4.50mm Pitch, Dual Row, Polarized, Positive Lock, 2 Circuits, Blue

Documents:

3D Model	Datasheet (PDF)
Drawing (PDF)	RoHS Certificate of Compliance (PDF)
3D Model (PDF)	

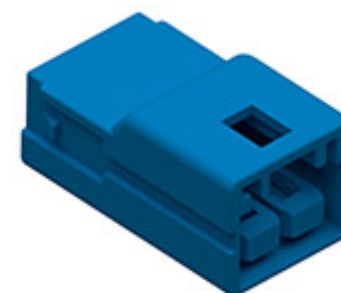
General

Product Family	Crimp Housings
Series	206996
Application	Power, Wire-to-Wire
Overview	CP Wire-to-Board and Wire-to-Wire Connector Systems
Product Name	CP-4.5
UPC	193264461912

Physical

Circuits (maximum)	2
Color - Resin	Blue
Gender	Receptacle
Glow-Wire Capable	No
Keying to Mating Part	Yes
Lock to Mating Part	Yes
Material - Resin	Nylon
Net Weight	1.630/g
Number of Rows	2
Packaging Type	Bag
Panel Mount	No
Pitch - Mating Interface	4.50mm
Pitch - Termination Interface	4.50mm
Polarized to Mating Part	Yes
Temperature Range - Operating	-40° to +105°C

Material Info



Series image - Reference only

EU ELV

Not Reviewed

EU RoHS

Not Reviewed

REACH SVHC

Not Reviewed

Halogen-Free

Status

Not Reviewed

For more information, please visit [Contact US](#)

China ROHS

Not Reviewed

ELV

Not Reviewed

RoHS Phthalates

Not Reviewed

Search Parts in this Series

[206996](#) Series

Mates With

CP-4.5 Plug Housing [2069972201](#)

Use With

Genderless Crimp Terminal 16-20 AWG
[2069998000](#)
Genderless Crimp
Terminal 22-26 AWG [2070008000](#)

CP-4.5 TPA [2069980100](#)

PLEASE CHECK WWW.MOLEX.COM FOR LATEST PART INFORMATION