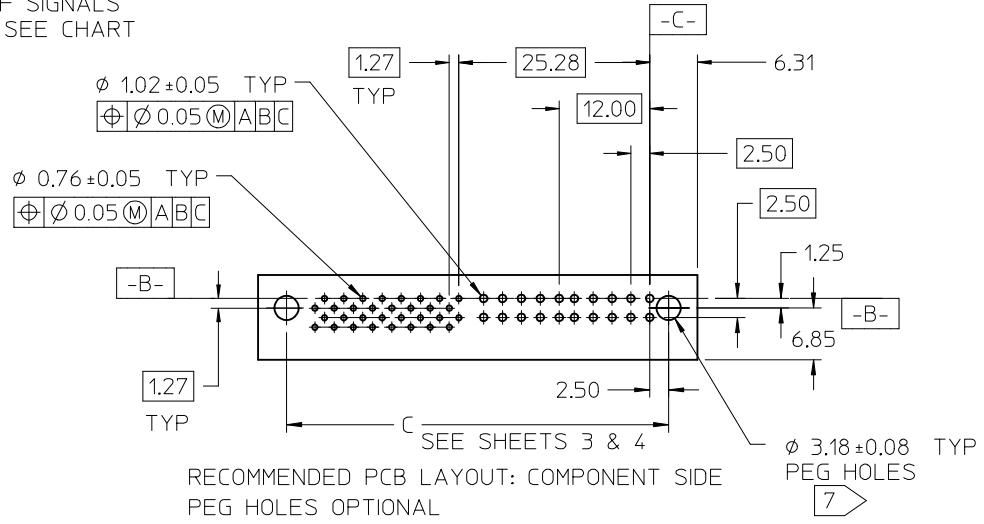
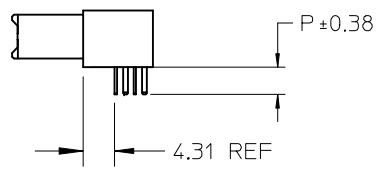
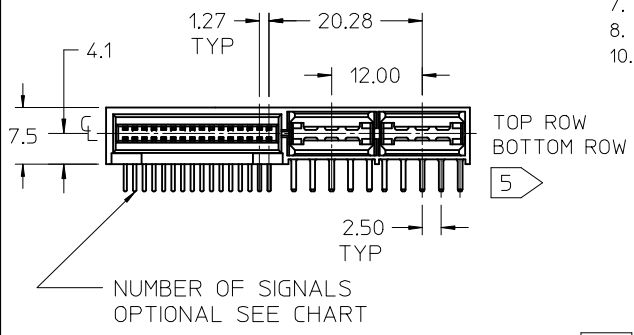
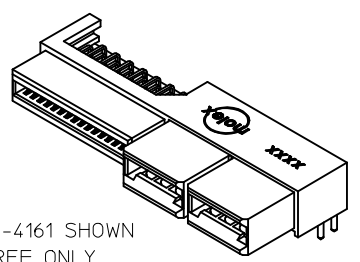


- SEE NOTE 10.
- NOTES:
1. MATERIAL HOUSING: GLASS FILLED LCP (LIQUID CRYSTAL POLYMER), 94V-0, COLOR-BLACK.
CONTACT: COPPER ALLOY.
 2. FINISH: SELECT GOLD - .76 MICROMETERS/30 MICROINCHES MINIMUM CONTACT AREA.
SELECT TIN - 3.81 MICROMETERS/150 MICROINCHES MINIMUM TAIL AREA.
BOTH OVER NICKEL - 1.27 MICROMETERS/50 MICROINCHES MINIMUM.
 3. POWER TERMINALS ARE LUBRICATED IN CONTACT AREA.
 3. PRODUCT SPECIFICATION: PS-45984-001.
 4. PACKAGING: TRAY PER PK-45984-001.
 5. SEE SHEET 5 FOR CKT IDENTIFICATION.
 6. PARTS ARE RoHS COMPLIANT.
 7. PEG HOLES ARE OPTIONAL SEE SHEET 3 AND 4.
 8. MATES TO 1.57/0.062 CARD EDGE OR MOLEX P/N 45985-4****.
 10. DATE CODE LOCATED APPROXIMATELY WHERE SHOWN.



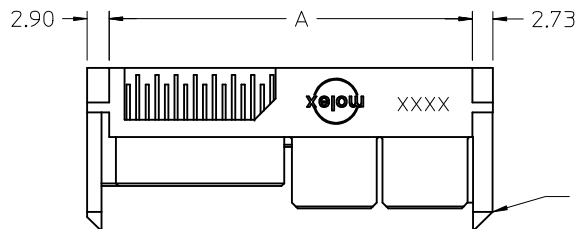
RECOMMENDED PCB LAYOUT: COMPONENT SIDE
PEG HOLES OPTIONAL

| NO OF SIGNAL | MATERIAL NUMBER | DIM A REF | DIM P | PCB THK |
|--------------|-----------------|-----------|-------|---------|
| 12 | 45984-4111 | 35.5 | 4.50 | 3.18 |
| 16 | 45984-4121 | 38.0 | | |
| 20 | 45984-4131 | 40.6 | | |
| 24 | 45984-4141 | 43.1 | | |
| 28 | 45984-4151 | 45.6 | | |
| 32 | 45984-4161 | 48.2 | | |
| 36 | 45984-4171 | 50.7 | 3.60 | 2.36 |
| 40 | 45984-4181 | 53.3 | | |
| 12 | 45984-4112 | 35.5 | | |
| 16 | 45984-4122 | 38.0 | | |
| 20 | 45984-4132 | 40.6 | | |
| 24 | 45984-4142 | 43.1 | | |
| 28 | 45984-4152 | 45.6 | 2.90 | 1.57 |
| 32 | 45984-4162 | 48.2 | | |
| 36 | 45984-4172 | 50.7 | | |
| 40 | 45984-4182 | 53.3 | | |
| 12 | 45984-4113 | 35.5 | | |
| 16 | 45984-4123 | 38.0 | | |
| 20 | 45984-4133 | 40.6 | | |
| 24 | 45984-4143 | 43.1 | | |
| 28 | 45984-4153 | 45.6 | | |
| 32 | 45984-4163 | 48.2 | | |
| 36 | 45984-4173 | 50.7 | | |
| 40 | 45984-4183 | 53.3 | | |

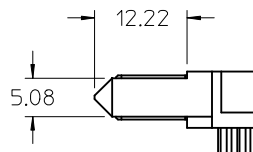
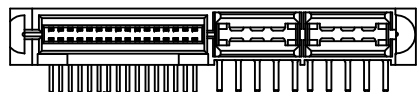


45984-4161 SHOWN
FOR REF ONLY
SEE CHART

| | | | | | | | | | | |
|---|---------------------|---------------------------------------|------------|-------------------------------------|------------|--|-------------------------------|------------------------|--|--|
| UPDATE GEOMETRY EC NO: UCP2016-4911 DRWN: BANDURA 2016/06/28 CHKD: BANDURA 2016/06/28 APPR: BPI/SZCZOR 2016/10/21 | QUALITY SYMBOLS | GENERAL TOLERANCES (UNLESS SPECIFIED) | | DIMENSION STYLE MM ONLY | | SCALE 1:1 | DESIGN UNITS METRIC | THIRD ANGLE PROJECTION | | |
| | | mm | INCH | DRAWN BY | DATE | TITLE LPH RECEPTACLE ASSEMBLY RT ANGLE 4 CIRCUIT POWER CONNECTOR | | | | |
| | | 4 PLACES ± --- | ± --- | SAMIEC | 2005/05/13 | | | | | |
| | | 3 PLACES ± --- | ± --- | CHECKED BY | DATE | | | | | |
| 2 PLACES ± 0.25 | ± --- | SAMIEC | 2005/05/13 | | | | | | | |
| 1 PLACE ± 0.38 | ± --- | APPROVED BY | DATE | DOCUMENT NO. SD-45984-400 | | | | | | |
| 0 PLACE ± | ± | MARGULIS | 2005/05/13 | | | | | | | |
| ANGULAR ± 1/2° DRAFT WHERE APPLICABLE MUST REMAIN WITHIN DIMENSIONS | | MATERIAL NO. SEE CHART | | SHEET NO. 1 OF 5 | | THIS DRAWING CONTAINS INFORMATION THAT IS PROPRIETARY TO MOLEX INCORPORATED AND SHOULD NOT BE USED WITHOUT WRITTEN PERMISSION | | | | |
| | | SIZE | | | | | | | | |

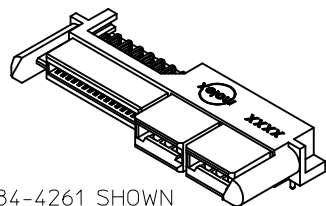


OPTIONAL GUIDES
SEE CHART



NO OF SIGNALS
OPTIONAL
SEE CHART

GUIDE POST OPTIONS



45984-4261 SHOWN
FOR REF ONLY
SEE CHART

| NO OF SIGNAL | MATERIAL NUMBER | DIM A | DIM P | PCB THK |
|--------------|-----------------|-------|-------|---------|
| 12 | 45984-4211 | 35.5 | 4.50 | 3.18 |
| 16 | 45984-4221 | 38.0 | | |
| 20 | 45984-4231 | 40.6 | | |
| 24 | 45984-4241 | 43.1 | | |
| 28 | 45984-4251 | 45.6 | | |
| 32 | 45984-4261 | 48.2 | | |
| 36 | 45984-4271 | 50.7 | 3.60 | 2.36 |
| 40 | 45984-4281 | 53.3 | | |
| 12 | 45984-4212 | 35.5 | | |
| 16 | 45984-4222 | 38.0 | | |
| 20 | 45984-4232 | 40.6 | | |
| 24 | 45984-4242 | 43.1 | | |
| 28 | 45984-4252 | 45.6 | 2.90 | 1.57 |
| 32 | 45984-4262 | 48.2 | | |
| 36 | 45984-4272 | 50.7 | | |
| 40 | 45984-4282 | 53.3 | | |
| 12 | 45984-4213 | 35.5 | | |
| 16 | 45984-4223 | 38.0 | | |
| 20 | 45984-4233 | 40.6 | | |
| 24 | 45984-4243 | 43.1 | | |
| 28 | 45984-4253 | 45.6 | | |
| 32 | 45984-4263 | 48.2 | | |
| 36 | 45984-4273 | 50.7 | | |
| 40 | 45984-4283 | 53.3 | | |

| | | | | | | | | | |
|---|-----------------|--|-------|--|------------------------------|---------------------|---|------------------------|--|
| SEE SHEET 1 EC NO: UCP2016-4911 DRWN:MBANDURA 2016/06/28 CHKD:MBANDURA 2016/06/28 APPR:BPISZCZOR 2016/10/21 | QUALITY SYMBOLS | GENERAL TOLERANCES (UNLESS SPECIFIED) | | DIMENSION STYLE MM ONLY | | SCALE 1:1 | DESIGN UNITS METRIC | THIRD ANGLE PROJECTION | |
| | ▽=0 | | mm | INCH | DRAWN BY SAMIEC | DATE 2005/05/13 | TITLE LPH RECEPTACLE ASSEMBLY RT ANGLE 4 CIRCUIT POWER CONNECTOR molex | | |
| | ▽=0 | 4 PLACES | ± --- | ± --- | CHECKED BY SAMIEC | DATE 2005/05/13 | | | |
| | ▽=0 | 3 PLACES | ± --- | ± --- | APPROVED BY MARGULIS | DATE 2005/05/13 | | | |
| | 2 PLACES | ± 0.25 | ± --- | MATERIAL NO. SEE CHART | DOCUMENT NO. SD-45984-400 | | | | |
| J1 | DESCRIPTION | ANGULAR ±1/2° | | SIZE A | | SHEET NO. 2 OF 5 | | | |
| | REV | DRAFT WHERE APPLICABLE MUST REMAIN WITHIN DIMENSIONS | | THIS DRAWING CONTAINS INFORMATION THAT IS PROPRIETARY TO MOLEX INCORPORATED AND SHOULD NOT BE USED WITHOUT WRITTEN PERMISSION | | | | | |

6

5

4

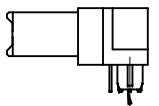
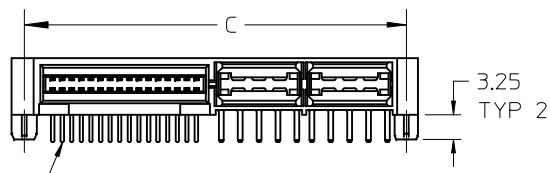
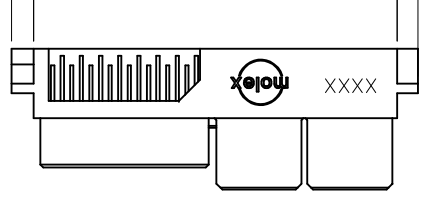
3

2

1

| NO OF SIGNAL | MATERIAL NUMBER | DIM A | DIM C | DIM P | PCB THK |
|--------------|-----------------|-------|-------|-------|---------|
| 12 | 45984-4311 | 35.5 | 37.90 | 4.50 | 3.18 |
| 16 | 45984-4321 | 38.0 | 40.44 | | |
| 20 | 45984-4331 | 40.6 | 42.98 | | |
| 24 | 45984-4341 | 43.1 | 45.52 | | |
| 28 | 45984-4351 | 45.6 | 48.06 | | |
| 32 | 45984-4361 | 48.2 | 50.60 | | |
| 36 | 45984-4371 | 50.7 | 53.14 | 3.60 | 2.36 |
| 40 | 45984-4381 | 53.3 | 55.68 | | |
| 12 | 45984-4312 | 35.5 | 37.90 | | |
| 16 | 45984-4322 | 38.0 | 40.44 | | |
| 20 | 45984-4332 | 40.6 | 42.98 | | |
| 24 | 45984-4342 | 43.1 | 45.52 | | |
| 28 | 45984-4352 | 45.6 | 48.06 | | |
| 32 | 45984-4362 | 48.2 | 50.60 | | |
| 36 | 45984-4372 | 50.7 | 53.14 | 2.90 | 1.57 |
| 40 | 45984-4382 | 53.3 | 55.68 | | |
| 12 | 45984-4313 | 35.5 | 37.90 | | |
| 16 | 45984-4323 | 38.0 | 40.44 | | |
| 20 | 45984-4333 | 40.6 | 42.98 | | |
| 24 | 45984-4343 | 43.1 | 45.52 | | |
| 28 | 45984-4353 | 45.6 | 48.06 | | |
| 32 | 45984-4363 | 48.2 | 50.60 | | |
| 36 | 45984-4373 | 50.7 | 53.14 | 40 | 55.68 |
| 40 | 45984-4383 | 53.3 | 55.68 | | |

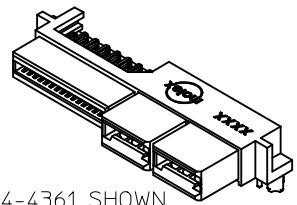
2.90 A 2.73



NO OF SIGNALS
OPTIONAL
SEE CHART

OPTIONAL PEGS

MOUNTING PEG OPTIONS



45984-4361 SHOWN
FOR REF ONLY
SEE CHART

| | | |
|-------------|---------------------|------------|
| SEE SHEET 1 | EC NO: UCP2016-4911 | 2016/06/28 |
| | DRWN:MBANDURA | 2016/06/28 |
| | CHKD:MBANDURA | 2016/06/28 |
| | APPR:BPISZCZOR | 2016/10/21 |
| | REV | J1 |

| QUALITY SYMBOLS | $\nabla = 0$ |
|-----------------|--------------|
| $\nabla = 0$ | $\nabla = 0$ |
| $\nabla = 0$ | $\nabla = 0$ |

| GENERAL TOLERANCES (UNLESS SPECIFIED) | | |
|--|------------|-----------|
| | mm | INCH |
| 4 PLACES | \pm --- | \pm --- |
| 3 PLACES | \pm --- | \pm --- |
| 2 PLACES | ± 0.25 | \pm --- |
| 1 PLACE | ± 0.38 | \pm --- |
| 0 PLACE | \pm | \pm |
| ANGULAR $\pm 1/2^\circ$ | | |
| DRAFT WHERE APPLICABLE MUST REMAIN WITHIN DIMENSIONS | | |

| DIMENSION STYLE | |
|-----------------|------------|
| MM ONLY | |
| DRAWN BY | DATE |
| SAMIEC | 2005/05/13 |
| CHECKED BY | DATE |
| SAMIEC | 2005/05/13 |
| APPROVED BY | DATE |
| MARGULIS | 2005/05/13 |
| MATERIAL NO. | |
| SEE CHART | |
| SIZE | A |

| | | | | |
|--|-----|--------------|--------|------------------------|
| SCALE | 1:1 | DESIGN UNITS | METRIC | THIRD ANGLE PROJECTION |
| TITLE | | | | |
| LPH RECEPTACLE ASSEMBLY RT ANGLE 4 CIRCUIT POWER CONNECTOR | | | | |
| molex | | | | |
| DOCUMENT NO. | | | | SHEET NO. |
| SD-45984-400 | | | | 3 OF 5 |

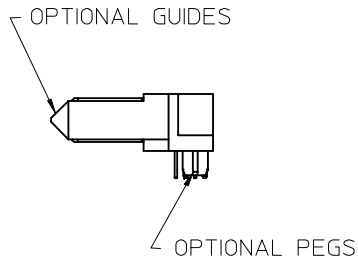
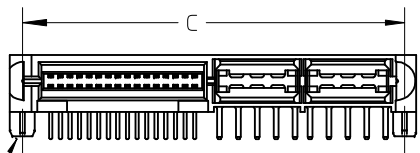
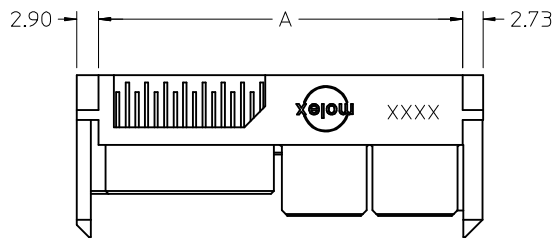
5

4

3

2

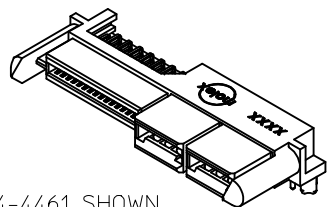
1



NO OF SIGNALS
OPTIONAL
SEE CHART

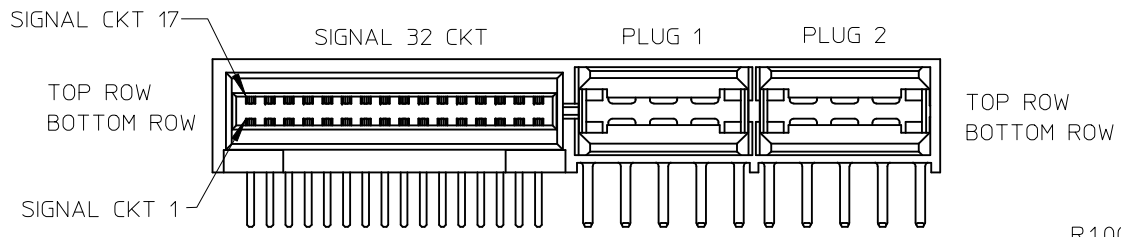
GUIDE POST & MOUNTING PEG OPTIONS

| NO OF SIGNAL | MATERIAL NUMBER | DIM A | DIM C | DIM P | PCB THK |
|--------------|-----------------|-------|-------|-------|---------|
| 12 | 45984-4411 | 35.5 | 37.90 | 4.50 | 3.18 |
| 16 | 45984-4421 | 38.0 | 40.44 | | |
| 20 | 45984-4431 | 40.6 | 42.98 | | |
| 24 | 45984-4441 | 43.1 | 45.52 | | |
| 28 | 45984-4451 | 45.6 | 48.06 | | |
| 32 | 45984-4461 | 48.2 | 50.60 | | |
| 36 | 45984-4471 | 50.7 | 53.14 | | |
| 40 | 45984-4481 | 53.3 | 55.68 | | |
| 12 | 45984-4412 | 35.5 | 37.90 | 3.60 | 2.36 |
| 16 | 45984-4422 | 38.0 | 40.44 | | |
| 20 | 45984-4432 | 40.6 | 42.98 | | |
| 24 | 45984-4442 | 43.1 | 45.52 | | |
| 28 | 45984-4452 | 45.6 | 48.06 | | |
| 32 | 45984-4462 | 48.2 | 50.60 | | |
| 36 | 45984-4472 | 50.7 | 53.14 | | |
| 40 | 45984-4482 | 53.3 | 55.68 | | |
| 12 | 45984-4413 | 35.5 | 37.90 | 2.90 | 1.57 |
| 16 | 45984-4423 | 38.0 | 40.44 | | |
| 20 | 45984-4433 | 40.6 | 42.98 | | |
| 24 | 45984-4443 | 43.1 | 45.52 | | |
| 28 | 45984-4453 | 45.6 | 48.06 | | |
| 32 | 45984-4463 | 48.2 | 50.60 | | |
| 36 | 45984-4473 | 50.7 | 53.14 | | |
| 40 | 45984-4483 | 53.3 | 55.68 | | |

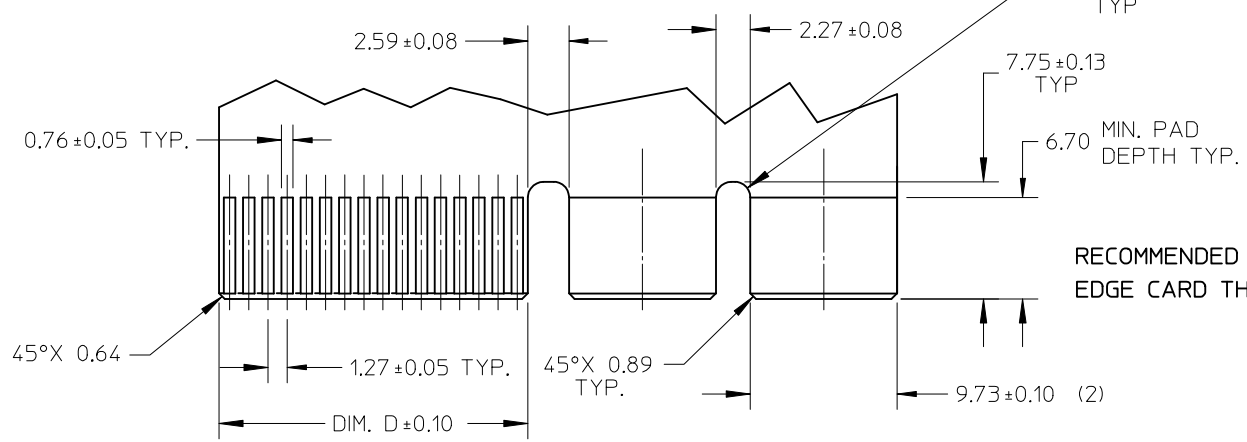


45984-4461 SHOWN
FOR REF ONLY
SEE CHART

| | | | | | | | | | | |
|---|--|--|------------|----------------------------|---|--|---|------------------------|--|--|
| SEE SHEET 1 EC NO: UCP2016-4911 DRWN:MBANDURA 2016/06/28 CHKD:MBANDURA 2016/06/28 APPR:BPISZCZOR 2016/10/21 | QUALITY SYMBOLS | GENERAL TOLERANCES (UNLESS SPECIFIED) | | DIMENSION STYLE MM ONLY | | SCALE 1:1 | DESIGN UNITS METRIC | THIRD ANGLE PROJECTION | | |
| | $\nabla_A = 0$ $\nabla_E = 0$ $\nabla_F = 0$ | | mm | INCH | DRAWN BY | DATE | TITLE LPH RECEPTACLE ASSEMBLY RT ANGLE 4 CIRCUIT POWER CONNECTOR | | | |
| | | 4 PLACES | \pm --- | \pm --- | SAMIEC | 2005/05/13 | | | | |
| | | | 3 PLACES | \pm --- | \pm --- | CHECKED BY | DATE | | | |
| | | 2 PLACES | \pm 0.25 | \pm --- | SAMIEC | 2005/05/13 | | | | |
| | 1 PLACE | \pm 0.38 | \pm --- | APPROVED BY | DATE | molex DOCUMENT NO. SD-45984-400 SHEET NO. 4 OF 5 | | | | |
| | 0 PLACE | \pm | \pm | MARGULIS | 2005/05/13 | | | | | |
| | | ANGULAR $\pm 1/2^\circ$ | | MATERIAL NO. | | | | | | |
| | | DRAFT WHERE APPLICABLE MUST REMAIN WITHIN DIMENSIONS | | SEE CHART | | | | | | |
| | | | | SIZE | THIS DRAWING CONTAINS INFORMATION THAT IS PROPRIETARY TO MOLEX INCORPORATED AND SHOULD NOT BE USED WITHOUT WRITTEN PERMISSION | | | | | |

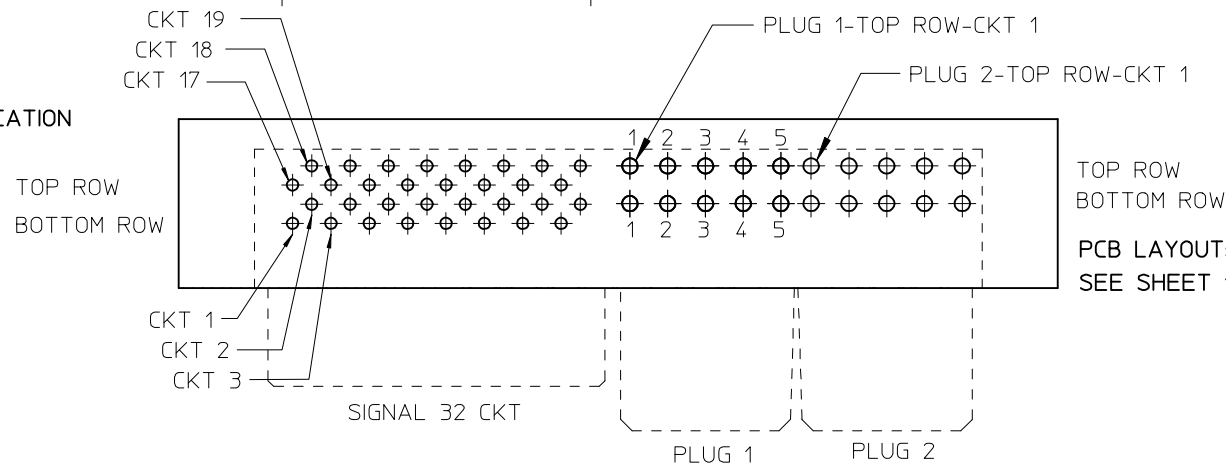


| NO. OF SIGNAL | DIM. D |
|---------------|--------|
| 12 | 8.00 |
| 16 | 10.54 |
| 20 | 13.08 |
| 24 | 15.62 |
| 28 | 18.16 |
| 32 | 20.70 |
| 36 | 23.24 |
| 40 | 25.78 |



RECOMMENDED EDGE CARD LAYOUT
EDGE CARD THICKNESS: 1.57±0.15/.062±.006

CIRCUIT IDENTIFICATION



TOP ROW
BOTTOM ROW
PCB LAYOUT: COMPONENT SIDE
SEE SHEET 1 FOR DIMENSIONS

| | | | | | | | | | | |
|--|---------------------|---------------------------------------|--|----------------------------|--|--------------------|---|------------------------|--|--|
| SEE SHEET 1 EC NO: UCP2016-4911 DRWN: MBANDURA 2016/06/28 CHKD: BANDURA 2016/06/28 APPR: BPI/SZCZOR 2016/10/21 | QUALITY SYMBOLS | GENERAL TOLERANCES (UNLESS SPECIFIED) | | DIMENSION STYLE MM ONLY | | SCALE 2:1 | DESIGN UNITS METRIC | THIRD ANGLE PROJECTION | | |
| | | | mm | INCH | DRAWN BY SAMIEC | DATE 2005/05/13 | TITLE LPH RECEPTACLE ASSEMBLY RT ANGLE 4 CIRCUIT POWER CONNECTOR | | | |
| | | 4 PLACES | ± --- | ± --- | CHECKED BY SAMIEC | DATE 2005/05/13 | | | | |
| | | 3 PLACES | ± --- | ± --- | APPROVED BY MARGULIS | DATE 2005/05/13 | molex DOCUMENT NO. SD-45984-400 SHEET NO. 5 OF 5 | | | |
| 2 PLACES | ± 0.25 | ± --- | MATERIAL NO. | | | | | | | |
| 1 PLACE | ± 0.38 | ± --- | ANGULAR ±1/2° | | SEE CHART | | | | | |
| 0 PLACE | ± | ± | DRAFT WHERE APPLICABLE MUST REMAIN WITHIN DIMENSIONS | | THIS DRAWING CONTAINS INFORMATION THAT IS PROPRIETARY TO MOLEX INCORPORATED AND SHOULD NOT BE USED WITHOUT WRITTEN PERMISSION | | | | | |