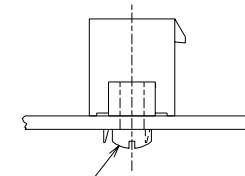
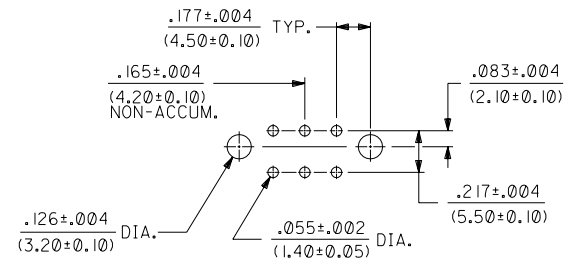
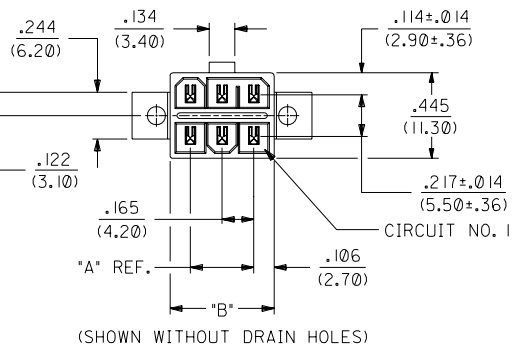
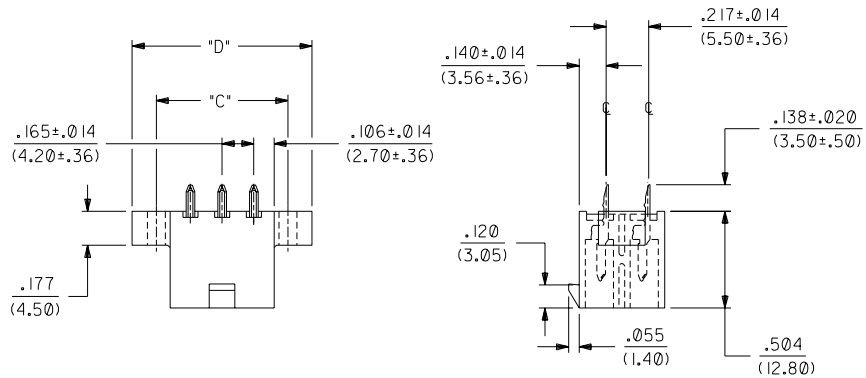


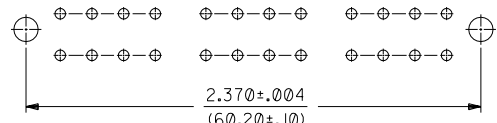
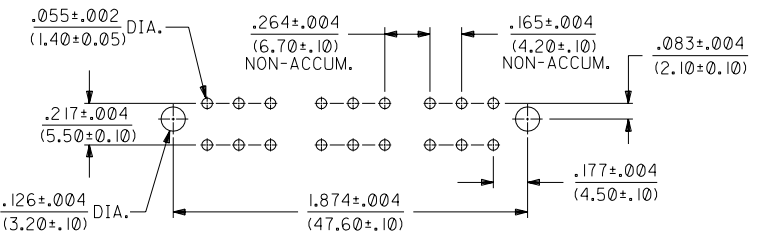
1. HOUSING MAT'L.: POLYESTER, UNFILLED, 94V-0. COLOR: BLACK.
 2. TERMINAL MATERIAL: BRASS ALLOY 260.
 3. PART MATES WITH RECEPTACLE 30067-*..
 4. PRODUCT SPECIFICATION AND PROCESSING PARAMETERS: SEE PS-5556-003
 5. PART IS DESIGNED FOR USE WITH 4-40 OR M3 SCREWS.
 6. PLATINGS:
 - 1 = .000035/(.00090) MIN. BRIGHT TIN OVER .000020/(.00050) MIN. COPPER.
 - *2 = .000030/(.00076) MIN. SELECT GOLD AND .000100/(.00254) MIN. SELECT MATTE TIN OVER .000050/(.00127) MIN. NICKEL OVERALL.
- *THE PRIMARY SHIPPING CARTON WILL BE LABELED "COMPLIANT TO RoHS DIRECTIVE 2002/95/EC AND ELV ANNEX II OF DIRECTIVE 2000/53/EC." CARTONS WITHOUT THIS LABEL MAY CONTAIN PRODUCT WITH TIN-LEAD PLATING.



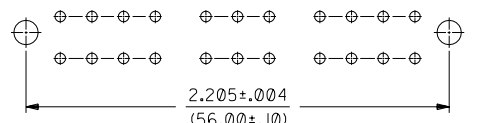
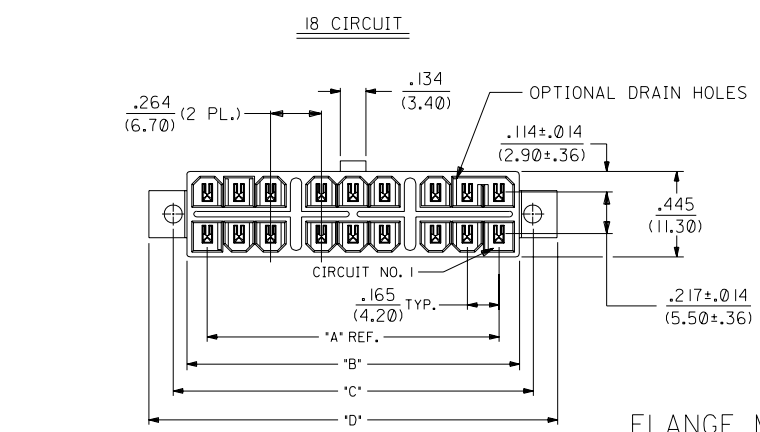
RECOMMENDED INSTALLATION OF HEADER TO P.C. BOARD



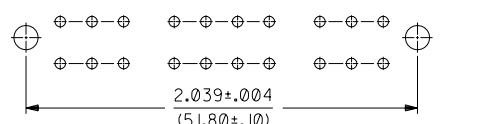
RECOMMENDED HOLE LAYOUT FOR .070/(1.78) MAX. THICK P.C. BOARD



24 CIRCUIT



22 CIRCUIT



20 CIRCUIT

FLANGE MOUNT (SEE SHT. 2 FOR PARTS WITH PEGS)

4	E		
3	E		
2	D3	G	REMOVED TIN-LEAD ECN #UCP2004-1872 03-29-04 MSC
1	G		

DIMENSIONS SHOWN (METRIC) INCH UNLESS OTHERWISE SPECIFIED TOLERANCES: ANGULAR ± 1/2°		▽ = 0 ▼ = 0		REVISE ONLY ON CAD SYSTEM	
3 PLACE ± .010 ---		INCH METRIC		TITLE	
2 PLACE ± .014 ± 0.25				MINI-FIT T.P.A. VERTICAL HEADER ASSEMBLY	
1 PLACE --- ± 0.36		DRAFT WHERE APPLICABLE MUST REMAIN WITHIN DIMENSIONS		MOLEX INCORPORATED SHEET NO. DATE U.S.A. 1 OF 4 9/19/91	
PART NO. SDA-30069-1		DRWG. NO. SDA-30069-1		SEE CHARTS	
DRWG. BY: RJF	CHK'D. BY: GEP	FILE NAME: S30069X1.DGN	APP'D. BY: RAS	SCALE: 2:1	SIZE: CP C

TIN-PLATED ASSEMBLIES WITH FLANGES, WITHOUT DRAIN HOLES.							GOLD-PLATED ASSEMBLIES WITH FLANGES, WITHOUT DRAIN HOLES.						
CKT. SIZE	ENG. NO.	EDP. NO.	DIM. 'A'	DIM. 'B'	DIM. 'C'	DIM. 'D'	CKT. SIZE	ENG. NO.	EDP. NO.	DIM. 'A'	DIM. 'B'	DIM. 'C'	DIM. 'D'
2	A-30069-02A1	15-97-7022	—	.213 (5.40)	.354 (9.00)	.606 (15.40)	2	A-30069-02A2	15-97-7024	—	.213 (5.40)	.354 (9.00)	.606 (15.40)
4	A-30069-04A1	15-97-7042	.165 (4.20)	.378 (9.60)	.520 (13.20)	.772 (19.60)	4	A-30069-04A2	15-97-7044	.165 (4.20)	.378 (9.60)	.520 (13.20)	.772 (19.60)
6	A-30069-06A1	15-97-7062	.331 (8.40)	.543 (13.80)	.685 (17.40)	.937 (23.80)	6	A-30069-06A2	15-97-7064	.331 (8.40)	.543 (13.80)	.685 (17.40)	.937 (23.80)
8	A-30069-08A1	15-97-7082	.496 (12.60)	.709 (18.00)	.850 (21.60)	1.102 (28.00)	8	A-30069-08A2	15-97-7084	.496 (12.60)	.709 (18.00)	.850 (21.60)	1.102 (28.00)
10	A-30069-10A1	15-97-7102	.661 (16.80)	.874 (22.20)	1.016 (25.80)	1.268 (32.20)	10	A-30069-10A2	15-97-7104	.661 (16.80)	.874 (22.20)	1.016 (25.80)	1.268 (32.20)
12	A-30069-12A1	15-97-7122	.827 (21.00)	1.039 (26.40)	1.181 (30.00)	1.433 (36.40)	12	A-30069-12A2	15-97-7124	.827 (21.00)	1.039 (26.40)	1.181 (30.00)	1.433 (36.40)
14	A-30069-14A1	NOT TOOLED	.992 (25.20)	1.205 (30.60)	1.346 (34.20)	1.598 (40.60)	14	A-30069-14A2	NOT TOOLED	.992 (25.20)	1.205 (30.60)	1.346 (34.20)	1.598 (40.60)
16	A-30069-16A1	15-97-7162	1.157 (29.40)	1.370 (34.80)	1.512 (38.40)	1.764 (44.80)	16	A-30069-16A2	15-97-7164	1.157 (29.40)	1.370 (34.80)	1.512 (38.40)	1.764 (44.80)
18	A-30069-18A1	NOT TOOLED	1.520 (38.60)	1.732 (44.00)	1.874 (47.60)	2.126 (54.00)	18	A-30069-18A2	NOT TOOLED	1.520 (38.60)	1.732 (44.00)	1.874 (47.60)	2.126 (54.00)
20	A-30069-20A1	NOT TOOLED	1.685 (42.80)	1.898 (48.20)	2.039 (51.80)	2.291 (58.20)	20	A-30069-20A2	NOT TOOLED	1.685 (42.80)	1.898 (48.20)	2.039 (51.80)	2.291 (58.20)
22	A-30069-22A1	NOT TOOLED	1.850 (47.00)	2.063 (52.40)	2.205 (56.00)	2.457 (62.40)	22	A-30069-22A2	NOT TOOLED	1.850 (47.00)	2.063 (52.40)	2.205 (56.00)	2.457 (62.40)
24	A-30069-24A1	NOT TOOLED	2.016 (51.20)	2.228 (56.60)	2.370 (60.20)	2.622 (66.60)	24	A-30069-24A2	NOT TOOLED	2.016 (51.20)	2.228 (56.60)	2.370 (60.20)	2.622 (66.60)

TIN-PLATED ASSEMBLIES WITH FLANGES AND DRAIN HOLES.							GOLD-PLATED ASSEMBLIES WITH FLANGES AND DRAIN HOLES.						
CKT. SIZE	ENG. NO.	EDP. NO.	DIM. 'A'	DIM. 'B'	DIM. 'C'	DIM. 'D'	CKT. SIZE	ENG. NO.	EDP. NO.	DIM. 'A'	DIM. 'B'	DIM. 'C'	DIM. 'D'
2	A-30069-02B1	NOT TOOLED	—	.213 (5.40)	.354 (9.00)	.606 (15.40)	2	A-30069-02B2	NOT TOOLED	—	.213 (5.40)	.354 (9.00)	.606 (15.40)
4	A-30069-04B1	15-97-7046	.165 (4.20)	.378 (9.60)	.520 (13.20)	.772 (19.60)	4	A-30069-04B2	15-97-7048	.165 (4.20)	.378 (9.60)	.520 (13.20)	.772 (19.60)
6	A-30069-06B1	15-97-7066	.331 (8.40)	.543 (13.80)	.685 (17.40)	.937 (23.80)	6	A-30069-06B2	15-97-7068	.331 (8.40)	.543 (13.80)	.685 (17.40)	.937 (23.80)
8	A-30069-08B1	15-97-7086	.496 (12.60)	.709 (18.00)	.850 (21.60)	1.102 (28.00)	8	A-30069-08B2	15-97-7088	.496 (12.60)	.709 (18.00)	.850 (21.60)	1.102 (28.00)
10	A-30069-10B1	15-97-7106	.661 (16.80)	.874 (22.20)	1.016 (25.80)	1.268 (32.20)	10	A-30069-10B2	15-97-7108	.661 (16.80)	.874 (22.20)	1.016 (25.80)	1.268 (32.20)
12	A-30069-12B1	15-97-7126	.827 (21.00)	1.039 (26.40)	1.181 (30.00)	1.433 (36.40)	12	A-30069-12B2	15-97-7128	.827 (21.00)	1.039 (26.40)	1.181 (30.00)	1.433 (36.40)
14	A-30069-14B1	NOT TOOLED	.992 (25.20)	1.205 (30.60)	1.346 (34.20)	1.598 (40.60)	14	A-30069-14B2	NOT TOOLED	.992 (25.20)	1.205 (30.60)	1.346 (34.20)	1.598 (40.60)
16	A-30069-16B1	15-97-7166	1.157 (29.40)	1.370 (34.80)	1.512 (38.40)	1.764 (44.80)	16	A-30069-16B2	15-97-7168	1.157 (29.40)	1.370 (34.80)	1.512 (38.40)	1.764 (44.80)
18	A-30069-18B1	NOT TOOLED	1.520 (38.60)	1.732 (44.00)	1.874 (47.60)	2.126 (54.00)	18	A-30069-18B2	NOT TOOLED	1.520 (38.60)	1.732 (44.00)	1.874 (47.60)	2.126 (54.00)
20	A-30069-20B1	NOT TOOLED	1.685 (42.80)	1.898 (48.20)	2.039 (51.80)	2.291 (58.20)	20	A-30069-20B2	NOT TOOLED	1.685 (42.80)	1.898 (48.20)	2.039 (51.80)	2.291 (58.20)
22	A-30069-22B1	NOT TOOLED	1.850 (47.00)	2.063 (52.40)	2.205 (56.00)	2.457 (62.40)	22	A-30069-22B2	NOT TOOLED	1.850 (47.00)	2.063 (52.40)	2.205 (56.00)	2.457 (62.40)
24	A-30069-24B1	NOT TOOLED	2.016 (51.20)	2.228 (56.60)	2.370 (60.20)	2.622 (66.60)	24	A-30069-24B2	NOT TOOLED	2.016 (51.20)	2.228 (56.60)	2.370 (60.20)	2.622 (66.60)

LEGEND:

A - 30069 - ** A *

CIRCUIT SIZE (02-24)

HOUSING STYLE

A = FLANGES
 B = FLANGES, DRAIN HOLES
 C = PEGS
 D = PEGS, DRAIN HOLES

PLATING

1 = TIN OVER COPPER.
 2 = 30' GOLD OVER NICKEL.

E	SEE SHT. 1
D3	SEE SHT. 1
D2	SEE SHT. 1
C1	SEE SHT. 1
C	SEE SHT. 1
B	SEE SHT. 1
A	SEE SHEET 1

DIMENSIONS SHOWN (METRIC) INCH UNLESS OTHERWISE SPECIFIED TOLERANCES ANGLES ARE ± 1/2°

DRAFT WHERE APPLICABLE MUST REMAIN WITHIN DIMENSIONS

DRWG. BY: R/JF CHK'D. BY: GEP
 APP'D. BY: RAS SCALE: --2--

MFG. SH. REV. LTR. REVISIONS

REVISIONS

TITLE: MINI-FIT T.P.A. VERTICAL HEADER ASSEMBLY

PART NO. SEE CHARTS. SDA-30069-****

MOLEX INCORPORATED LITTLEVILLE, MISSOURI 60532 U.S.A.

SHEET NO. 3 DATE 9/19/91

THIS DRAWING CONTAINS INFORMATION THAT IS PROPRIETARY TO MOLEX INC. AND SHOULD NOT BE USED WITHOUT WRITTEN PERMISSION.

CP C