

PLEASE CHECK WWW.MOLEX.COM FOR LATEST PART INFORMATION

Part Number: **0757101006**
Status: **Active**
Overview: GbX I-Trac Backplane Connector System
Description: GbX I-Trac Right-Angle Daughtercard Module, 1.85mm by 3.70mm Pitch, Unguided, 11 Rows, 6 Columns, 132 Circuits

Documents:

3D Model	Product Specification PS-75710-999-001 (PDF)
Drawing (PDF)	Packaging Specification PK-70873-609-001 (PDF)
3D Model (PDF)	RoHS Certificate of Compliance (PDF)

Agency Certification

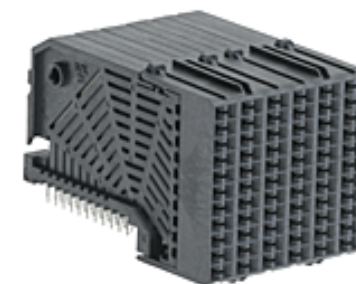
UL E29179

General

Product Family	Backplane Connectors
Series	<u>75710</u>
Application	Coplanar, Daughtercard
Component Type	PCB Receptacle
Data Rate	12.0 Gbps
Overview	<u>GbX I-Trac Backplane Connector System</u>
Product Name	GbX I-Trac
Taxonomy	Backplane Connectors
UPC	822350316835

Physical

Circuits (Loaded)	132
Circuits (maximum)	132
Color - Resin	Black
Durability (mating cycles max)	200
First Mate / Last Break	No
Flammability	94V-0
Guide to Mating Part	No
Keying to Mating Part	None
Material - Metal	High Performance Alloy (HPA)
Material - Plating Mating	Gold
Material - Plating Termination	Tin
Material - Resin	High Temperature Thermoplastic
Net Weight	16.236/g
Number of Columns	6
Number of Pairs	Open Pin Field
Number of Rows	11
Orientation	Right Angle
PC Tail Length	2.00mm
PCB Locator	Yes
PCB Retention	Yes
PCB Thickness - Recommended	1.60mm
Packaging Type	Tray
Pitch - Mating Interface	1.85mm, 3.70mm
Pitch - Termination Interface	1.00mm, 2.70mm
Plating min - Mating	0.762µm
Plating min - Termination	0.762µm
Polarized to PCB	No
Stackable	Yes
Surface Mount Compatible (SMC)	Yes
Temperature Range - Operating	-55° to +80°C
Termination Interface: Style	Through Hole - Compliant Pin



Series image - Reference only

EU ELV

Not Relevant

EU RoHS

Compliant

REACH SVHC

Not Contained Per -
D(2022)4187-DC (10
June 2022)

Halogen-Free

Status

Low-Halogen

For more information, please visit [Contact US](#)

China ROHS

ELV

RoHS Phthalates

China RoHS

Green Image

Not Relevant

Not Contained

Search Parts in this Series

[75710](#) Series

Mates With

[75705](#) GbX I-Trac Vertical Header Module.
[75910](#) GbX I-Trac Right Angle Header
Module

Use With

[78234](#) GbX I-Trac Right Angle Power
Header. [76153](#) Pirate Cannon Wide Guide
Module

Electrical

Current - Maximum per Contact	1.0A
Shield Type	N/A
Shielded	No
Voltage - Maximum	120V AC (RMS)/DC

Solder Process Data

Lead-freeProcess Capability	N/A
-----------------------------	-----

Material Info**Reference - Drawing Numbers**

Packaging Specification	PK-70873-609-001
Product Specification	PS-75710-999-001
Sales Drawing	SD-75710-001-001

This document was generated on 08/26/2022

PLEASE CHECK WWW.MOLEX.COM FOR LATEST PART INFORMATION