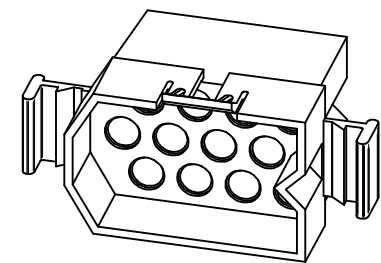
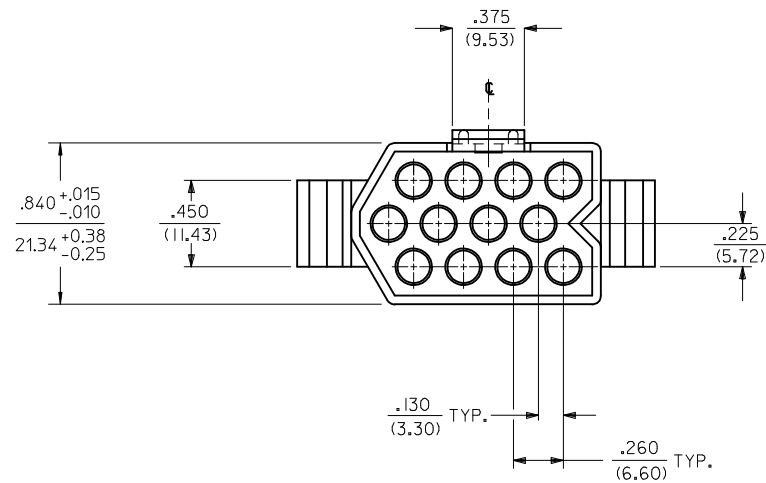


MOUNTING EAR (2 PL.)
(WHEN SPECIFIED)
SEE SHT. 3



PLUG 220I-P



REV	DESCRIPTION	DATE	APPROVED
J2	REVISE TOLERANCES EC NO: UCP2015-0654 IDRW:MKIPPER CHKD:JBELL APPR:FSMITH	2014/08/14 2014/08/14 2014/08/15	

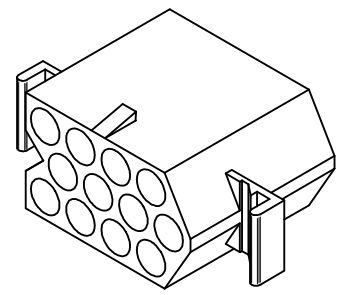
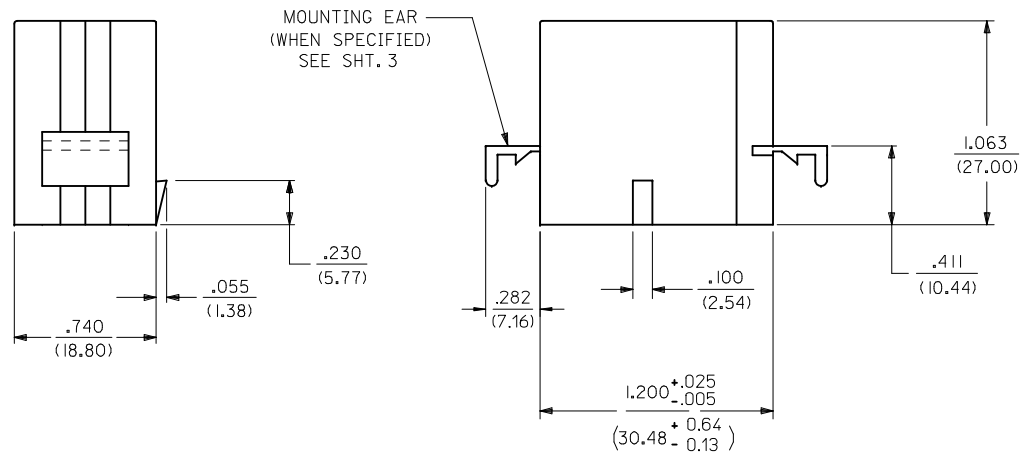
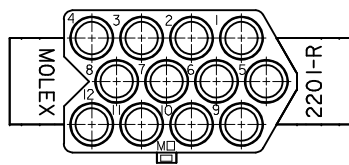
QUALITY SYMBOLS	
	ϕ
	ϕ
	ϕ

GENERAL TOLERANCES (UNLESS SPECIFIED)	
mm	INCH
4 PLACES	\pm ---
3 PLACES	\pm ---
2 PLACES	\pm 0.25
1 PLACE	\pm 0.35
0 PLACE	\pm ---

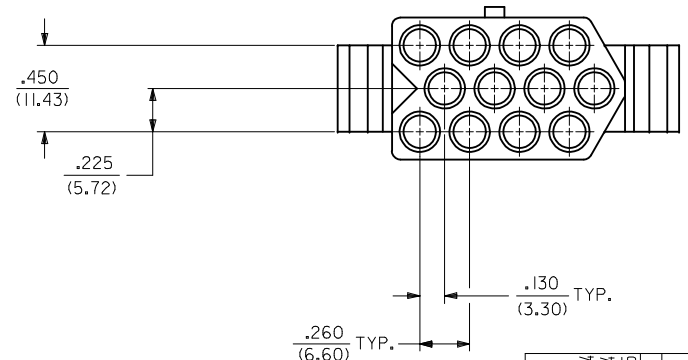
DIMENSION STYLE IN/MM		SCALE 2:1	DESIGN UNITS INCH	THIRD ANGLE PROJECTION
DRAWN BY GEP	DATE 7/23/87	TITLE 12 CIRCUIT HOUSING PLUG & RECEPTACLE		
CHECKED BY RW	DATE 7/23/87			
APPROVED BY FSMITH	DATE 2014/08/15			
MATERIAL NO. SEE CHART		DOCUMENT NO. SD-2201-*	SHEET NO. 1 OF 3	

DRAFT WHERE APPLICABLE MUST REMAIN WITHIN DIMENSIONS

THIS DRAWING CONTAINS INFORMATION THAT IS PROPRIETARY TO MOLEX INCORPORATED AND SHOULD NOT BE USED WITHOUT WRITTEN PERMISSION



RECEPTACLE 2201-R

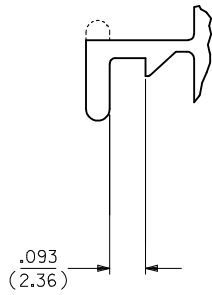


SEE SHEET 1 EC NO: UCP2015-0654 DRWN:KIPPER 2014/08/14 CHKD:JBELL 2014/08/14 APPR:FSMITH 2014/08/15	QUALITY SYMBOLS ∇=0 ∇=0 ∇=0	GENERAL TOLERANCES (UNLESS SPECIFIED) mm INCH 4 PLACES ± --- ± --- 3 PLACES ± --- ± .010 2 PLACES ± 0.25 ± .014 1 PLACE ± 0.35 ± --- 0 PLACE ± --- ± ---	DIMENSION STYLE IN/MM DRAWN BY DATE GEP 7/23/87 CHECKED BY DATE RW 7/23/87 APPROVED BY DATE FSMITH 2014/08/15	SCALE 2:1 DESIGN UNITS INCH THIRD ANGLE PROJECTION	TITLE 12 CIRCUIT HOUSING PLUG & RECEPTACLE molex
	J2	ANGULAR ±1/2° DRAFT WHERE APPLICABLE MUST REMAIN WITHIN DIMENSIONS	MATERIAL NO. SEE CHART	DOCUMENT NO. SD-2201-*	SHEET NO. 2 OF 3
	THIS DRAWING CONTAINS INFORMATION THAT IS PROPRIETARY TO MOLEX INCORPORATED AND SHOULD NOT BE USED WITHOUT WRITTEN PERMISSION				
	SIZE C				

PLUG

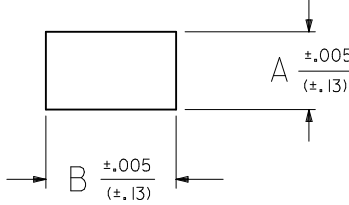
RECEPTACLE

PART NO.	ENG. NO.	DESCRIPTION	PART NO.	ENG. NO.	DESCRIPTION
03-12-2121	2201-P	PLUG WITH STANDARD EARS (DETAIL 1)	03-12-1121	2201-R	RECEPTACLE WITH STANDARD EARS (DETAIL 1)



DETAIL 1
STANDARD MOUNTING EAR
SCALE 4:1

MOUNTING PANEL OPENING		
HOUSING	DIM. "A"	DIM. "B"
PLUG	.855/(21.72)	1.460/(37.08)
RECEPTACLE	.810/(20.57)	1.360/(34.54)



NOTES:

- 1) MATERIAL: NYLON TYPE 6/6, 94V-2, NATURAL.
- 2) FINISH: N/A
- 3) PRODUCT SPECS: NONE.
- 4) PACKAGING SPECS: BULK PACK PER PK-2201-001.
- 5) FOR USE WITH .125/(3.18) DIA. SERIES TERMINALS.
- 6) MAXIMUM PANEL THICKNESS .090/(2.29).

SEE SHEET 1 EC NO: UCP2015-0654 DRWN:KIPPER 2014/08/14 CHKD:JBELL 2014/08/14 APPR:FSMITH 2014/08/15	J2 REV	DESCRIPTION QUALITY SYMBOLS ▽=0 ▽=0 ▽=0	GENERAL TOLERANCES (UNLESS SPECIFIED)		DIMENSION STYLE IN/MM	SCALE 2:1	DESIGN UNITS INCH	THIRD ANGLE PROJECTION
			4 PLACES ± --- ± --- 3 PLACES ± --- ± .010 2 PLACES ± 0.25 ± .014 1 PLACE ± 0.35 ± --- 0 PLACE ± --- ± ---	DRAWN BY GEP	DATE 7/23/87	TITLE 12 CIRCUIT HOUSING PLUG & RECEPTACLE		
			ANGULAR ±1/2°	CHECKED BY RW	DATE 7/23/87			
			DRAFT WHERE APPLICABLE MUST REMAIN WITHIN DIMENSIONS			APPROVED BY FSMITH	DATE 2014/08/15	MATERIAL NO. SEE CHART

THIS DRAWING CONTAINS INFORMATION THAT IS PROPRIETARY TO MOLEX INCORPORATED AND SHOULD NOT BE USED WITHOUT WRITTEN PERMISSION