

MSA-25U Smoke Absorber Introduction Guide



THANK YOU FOR PURCHASING THE MSA-25U SMOKE ABSORBER

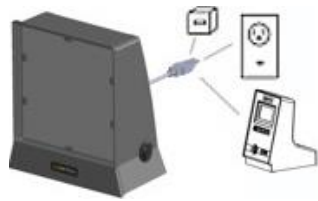
The MSA-25U User Manual can be downloaded from the following link or QR code:
Das Benutzerhandbuch kann direkt über den folgenden Link heruntergeladen werden:
Le manuel d'utilisation peut être téléchargé directement à partir du lien suivant:
El manual de usuario de MSA-25U se puede descargar desde el siguiente enlace:
Il manuale utente può essere scaricato direttamente dal seguente link:
La guida per l'utente può essere scaricata direttamente dal seguente link:
可以从以下链接直接下载用户手册:



bit.ly/Metcal-MSA-25U-User-Guide



1. Add Filter



2. Plug into a USB port



3. Power On

Please read the following safety information before using this product

WARNING// 警告// WARNUNG// 警告//ATTENZIONE//AVERTISSEMENT//ADVERTENCIA//경고

To reduce the risk of fire or electric shock, do not use with any solid-state speed control devices. Disconnect the power cord before servicing. Failure could result in electric shock. For safe and successful operation of the unit, read these instructions completely. If the instructions are not observed, the manufacturer can assume no responsibility. Retain this manual for future reference. Consult your "safety department" when using the unit on flammable gases. This unit is not explosion safe and can only be used for the extraction of vapors, which have concentration levels well below the lower explosive limits. Do not use the unit to extract corrosive substances. Do not expose the connecting cable to heat, oil, or sharp edges. Make sure the unit stands stable and secure. Use only original equipment filters or authorized filter replacements. Do not operate the unit without filter inserts. Contaminants in the extracted air will damage the fan. Always



MSA-25U Smoke Absorber

Introduction Guide



disconnect the power supply before servicing the unit. Never cover exhaust openings. Never cover all air inlet openings simultaneously. Observe general safety regulations for the handling of chemicals such as adhesives and sealants. Do not absorb combustible or explosive gas with the absorber. Use genuine Metcal or authorized replacement parts. If the supply cord is damaged, it must be replaced by the manufacturer, its service agent, or similarly qualified persons to avoid a hazard. This appliance can be used by children aged from 8 years and above and persons with reduced physical, sensory, or mental capabilities or lack of experience and knowledge if they have been given supervision or instruction concerning use of the appliance in a safe way and understand the hazards involved. Children shall not play with the appliance. Cleaning and user maintenance shall not be made by children without supervision. this appliance is designed to be used in commercial areas. They shall state that prior to cleaning or other maintenance, the appliance must be disconnected from the supply mains.

MAINTENANCE

Absorption power will decrease when the filter needs to be changed. Replace the filter when the filter turns white or when dust adheres to the surface of the filter. (Do not allow the filter to get wet)

Removing the filter

When replacing the filter, place your fingers on the filter and remove it by pulling it outward.

Attaching the filter

Place the filter on the absorber so that it aligns with the face of the unit. Then place the filter behind the six retaining tabs (see arrows, right).



PART NUMBER	DESCRIPTION
FM-MSA25	MSA25 Activated Charcoal Filter (Pack of 5)

WARRANTY

OK International warrants this product against any defects in material or workmanship for (1) year from the date of purchase by the original owner. This Warranty excludes normal maintenance and shall not apply to any opened, misused, abused, altered, or damaged items. If the product should become defective within the warranty period, Ok International will repair or replace the product free of charge as its sole option. The repaired or replacement item will be shipped, freight prepaid, to the original purchaser. The warranty period will start from the date of purchase. If the date of purchase cannot be substantiated the date of manufacture will be used as the start date of the warranty period.

Waste Electrical and Electronic Equipment Directive - WEEE (2002/96/EC).

When this MSA-25U is no longer required, if it cannot be re-used, we ask our customers not to dispose of it as unsorted municipal waste but to appropriately recycle the MSA-25U. In Europe, please contact your OK International distributor who can advise the recycling options available (www.okinternational.com).

Please visit Metcal's web page (www.metcal.com) where you will find available information on systems, accessories, technical notes, user guides, and more.

7000-7400

For Sales and Support:

Metcal Corporate Headquarters
10800 Valley View Street
Cypress, California, 90630, USA
Tel: 1-714-799-9910 | Fax: 1-714-828-2001
E-mail: eorders@okinternational.com

Visit our website for more information and to contact the Techcon office nearest you. We have several offices worldwide that are ready to serve your needs.

metcal.com/contact-us