

## L4400 Series LXI Switching and Control Summary

features switching, digital I/O, analog outputs and counter functionality in compact, self-contained LXI instruments



- LXI Class C Compliant **LXI**
- Small, 1U, half-rack size
- Built-in Ethernet connectivity
- Fully-featured graphical Web interface
- Standard Dsub connectors for flexible connection options
- Software drivers for most common programming environments

The Agilent L4400 Series LXI instruments are high-performance LXI Class C compliant instruments that encompass all benefits of LXI with an Ethernet connection, instrument Web server, standard software drivers and more. With their small size and Ethernet connectivity, these instruments are easily placed anywhere on the network.

**L4400 Series LXI Instruments offer a broad range of functionality to meet a wide variety of applications needs in design verification, automated test and data acquisition.**

### Low Frequency Switching

	Max Volts	Max Current	Scan Ch/Sec
L4421A 40 Channel Armature	±300 V	1 A	100
L4433A Dual 4 x 8 Reed Matrix	±150 V	0.5 A	500
L4437A 28 Channel Form C 4 Channel Form A	300 V 30 VDC/250 VAC	1 A 5 A	N/A N/A

### RF and Microwave Switching

L4445A Microwave Switch/Attenuator Driver	Drive up to 64 external switch coils; 32 SPDT switches, 8 multipoint switches, 8 attenuators, or custom combination
---	---

### System Measurement and Control

L4450A 64-Bit Digital I/O with Memory and Counter	Eight 8-bit digital I/O channels with programmable polarity, thresholds up to 5 V with handshaking protocols and 128 kbytes pattern memory. Two 10 MHz frequency counters and programmable clock output
L4451A 4 Channel Isolated D/A Converter with Memory	Output DCV up to ±16 V or DC current up to ±20 mA, output waveforms w/200 kHz update rate and 16 bit resolution. 500 k memory for waveform
L4452A Multifunction	Four 8-bit digital I/O channels, 2 Channel ±12 V analog outputs, 100 kHz gated totalizer



**Agilent Technologies**

### Ethernet connectivity enables simple connection to the network and remote access to your measurements

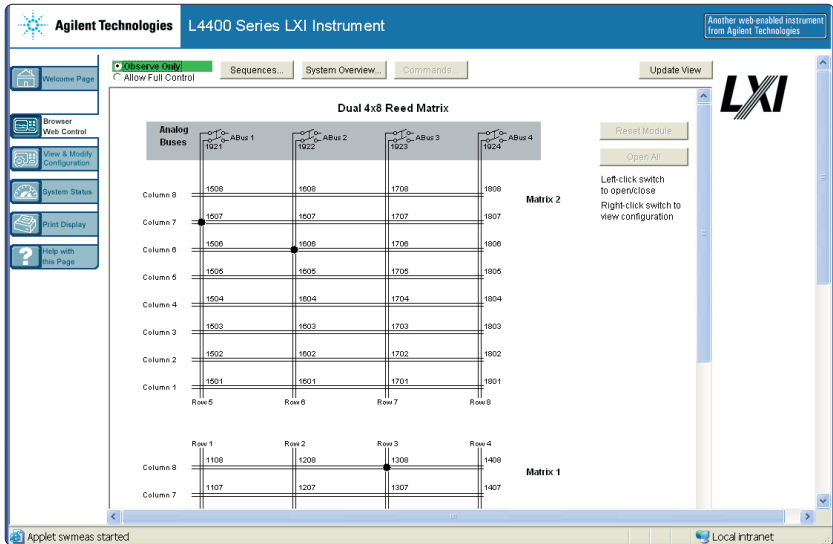
You can set up a private network to filter out unwanted LAN traffic and speed up the I/O throughput, or take advantage of the remote capabilities and distribute your tests worldwide.

### Use the built-in graphical Web interface for remote access and control of your instruments via a Java-enabled Web browser

Monitor, troubleshoot, or debug your application remotely. The Web interface includes features that allow you to view and modify instrument setup, setup and initiate scans or switch sequences, and get status reports on relay counts, firmware revisions and more.

### System connections you can trust

The L4400 series instruments come with standard Dsub connectors for simple, reliable connection options that include quick disconnect terminal blocks, cables and connector kits.



### Software drivers and connection tools to work in your environment

The Agilent I/O Libraries Suite make it easy for you to configure and integrate instruments into your system – even if your system includes instruments from other vendors. Additionally, these instruments include IVI and LabVIEW software drivers making it easy to program in the most popular programming environments including Agilent VEE and T&M Toolkit, National Instruments LabVIEW and LabWindows, and Microsoft programming languages.

### Agilent's family of LXI instruments offer versatility

In addition to the L4400 Series LXI instruments, Agilent offers the 34980A Switch/Measure unit for high-density systems. So whether you need a full-blown switching system with high-density switching, measurement and system control, or just a few channels of switching, Agilent's family of LXI switch/measure instruments have great versatility so you can choose what you need and easily add to it when your requirements change.

[www.Agilent.com/find/L4400](http://www.Agilent.com/find/L4400)  
[www.Agilent.com/find/34980A](http://www.Agilent.com/find/34980A)

See the Agilent L4400 and 34980A specific datasheets for more product information and ordering details.



Product specifications and descriptions in this document are subject to change without notice.

Microsoft®, Windows®, and Windows NT® are U.S. registered trademarks of Microsoft Corp.

© Agilent Technologies, Inc. 2006  
Printed in U.S.A. March 15, 2006  
5989-4921EN