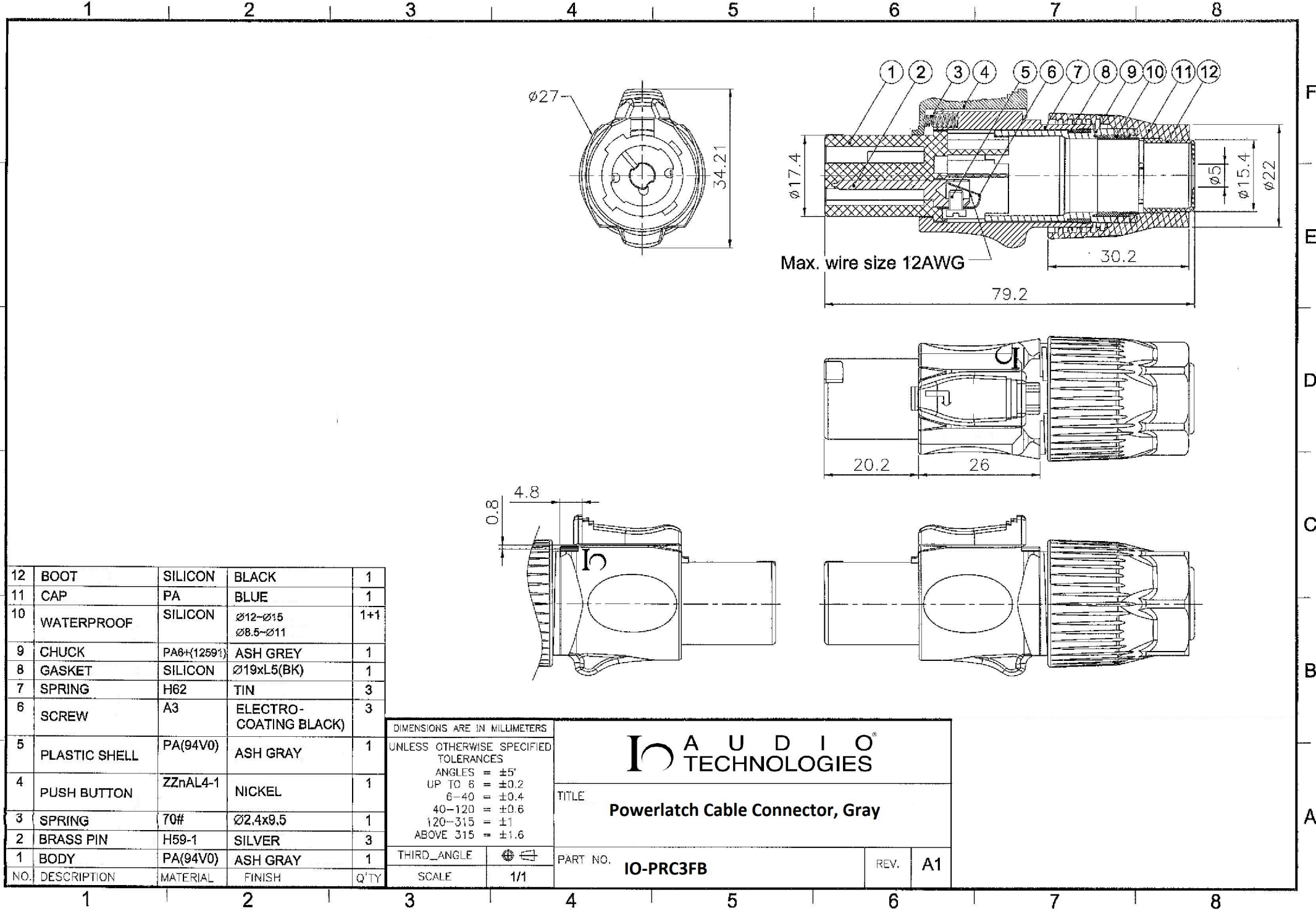


12	BOOT	SILICON	BLACK	1
11	CAP	PA	BLUE	1
10	WATERPROOF	SILICON	Ø12-Ø15 Ø8.5-Ø11	1+1
9	CHUCK	PA6+(12591)	ASH GREY	1
8	GASKET	SILICON	Ø19xL5 BK	1
7	SPRING	H62	TIN	3
6	SCREW	A3	ELECTRO-COATING BLACK	3
5	PLASTIC SHELL	PA(94V0)	BLUE	1
4	PUSH BUTTON	ZZnAL4-1	NICKEL	1
3	SPRING	70#	Ø2.4x9.5	1
2	BRASS PIN	H59-1	SILVER	3
1	BODY	PA(94V0)	BLUE	1
NO.	DESCRIPTION	MATERIAL	FINISH	Q'TY

DIMENSIONS ARE IN MILLIMETERS	
UNLESS OTHERWISE SPECIFIED TOLERANCES	
ANGLES = ±5°	
UP TO 6 = ±0.2	
6-40 = ±0.4	
40-120 = ±0.6	
120-315 = ±1	
ABOVE 315 = ±1.6	
THIRD_ANGLE	
SCALE	1/1

HAUDIO TECHNOLOGIES	
TITLE Powerlatch Cable Connector, Blue	
PART NO.	IO-PRC3FA
REV.	A1



12	BOOT	SILICON	BLACK	1
11	CAP	PA	BLUE	1
10	WATERPROOF	SILICON	Ø12-Ø15 Ø8.5-Ø11	1+1
9	CHUCK	PA6+(12591)	ASH GREY	1
8	GASKET	SILICON	Ø19xL5(BK)	1
7	SPRING	H62	TIN	3
6	SCREW	A3	ELECTRO-COATING BLACK)	3
5	PLASTIC SHELL	PA(94V0)	ASH GRAY	1
4	PUSH BUTTON	ZZnAL4-1	NICKEL	1
3	SPRING	70#	Ø2.4x9.5	1
2	BRASS PIN	H59-1	SILVER	3
1	BODY	PA(94V0)	ASH GRAY	1
NO.	DESCRIPTION	MATERIAL	FINISH	Q'TY

DIMENSIONS ARE IN MILLIMETERS	
UNLESS OTHERWISE SPECIFIED TOLERANCES	
ANGLES = ±5°	
UP TO 6 = ±0.2	
6-40 = ±0.4	
40-120 = ±0.6	
120-315 = ±1	
ABOVE 315 = ±1.6	
THIRD_ANGLE	
SCALE	1/1

IO AUDIO TECHNOLOGIES	
TITLE Powerlatch Cable Connector, Gray	
PART NO.	IO-PRC3FB
REV.	A1