

# 199999/120000 COUNTS DUAL DISPLAY DIGITAL MULTIMETER



## GDM-8255A (199999 Counts) GDM-8251A (120000 Counts)



### FEATURES

- \* GDM-8255A : 199,999 Counts Display  
GDM-8251A : 120,000 Counts Display
- \* VFD Two Colors Display
- \* 0.012% DCV Accuracy
- \* True RMS (AC, AC+DC)
- \* 9 Major Measuring Functions and 10 Advanced Measurement Functions
- \* 2W/4W Resistance Measurement
- \* High Voltage 1000V and 10A Current Range
- \* Standard Interface : RS-232C, USB Device, Digital I/O
- \* Free PC Software (DMM-VIEWER), LabVIEW Driver
- \* Optional 16+2 Channels Scanner Card (GDM-SC1 for GDM-8255A only)

### GTL-117 Test Lead

For: GDM-8255A/8251A,  
GDM-8245/8246



### GTL-247 USB Cable

A-A type cable,  
Approx. 1.8m  
For: GDM-8255A/8251A



### GDM-01 Calibration key

For: GDM-8255A/8251A



The GDM-8255A/8251A portable precision multimeters feature 199,999/120,000 counts, a dual display, a 0.012% DCV accuracy and 2w/4w measurement. The VFD display technology provides the excellent observation of contrast and brightness.

The GDM-8255A/8251A carries an extensive list of standard measurement items with a dual-display allowing two measurement items to be displayed simultaneously. Advanced measurement functions, such as Max/Min, Hold, Relative value and Compare, are suitable for a multiplicity of applications such as production testing, research and field verification. The USB, RS-232C and 9-pin digital I/O interface are included as standard features for remote control and data capturing for ATE applications.

For convenient PC-based remote control and extensive data capture, the GDM-8255A/8251A includes DMM-Viewer software at no additional cost. DMM-Viewer mimics the operation of the multimeters on the PC, allowing you to quickly use the software with little effort.

The optional scanner card (GDM-SC1), creates a self-contained multipoint measurement solution with plug-in design. This approach eliminates the complexities of multipoint measurements and data processing. The scanner lets users effectively measure multiple channels connected to a single GDM-8255A. Each scanner card has 16 general purpose channels and 2 extra channels for current (ACI, DCI) measurements. All channels are fully isolated (Hi and Lo). Up to two scanner cards can be inserted into each multimeter for a maximum of 36 channels. These optional modules not only provide customers with a complete hands-free multiple measurement solution, but also provide a cost effect upgrade path compared to purchasing dedicated instruments. (OPTIONAL FOR GDM-8255A ONLY)

SPECIFICATIONS		
	GDM-8255A	GDM-8251A
<b>FULL SCALE</b>		
	199,999 Counts	120,000 Counts
<b>SAMPLE RATE</b>	Slow : 5 1/2 digits, 10 readings/second Medium : 4 1/2 digits, 30 readings/second Fast : 3 1/2 digits, 60 readings/second	
<b>DC VOLTAGE</b>		
Range	100mV, 1V, 10V, 100V, 1000V 5 ranges	
Accuracy	± (0.012% rdg + 5 digits)	
Input Impedance	10MΩ	
<b>AC VOLTAGE True RMS</b>		
Range	100mV, 1V, 10V, 100V, 750V 5 ranges	
Accuracy	20Hz~45Hz : ± (1% rdg + 100 digits) 45Hz ~ 10kHz : ± (0.2% rdg + 100 digits) 10kHz ~ 30kHz : ± (1% rdg + 100 digits) 30kHz~100kHz : ± (3% rdg + 200 digits)	
Input Impedance	1.1MΩ in parallel with approx. 100pF	
<b>DC CURRENT</b>		
Range	10mA, 100mA, 1A, 10A 4 ranges	
Accuracy	10mA, 100mA : ± (0.05% rdg + 15 digits) 1A, 10A range : ± (0.2% rdg + 5 digits)	
<b>AC CURRENT TRUE RMS</b>		
Range	10mA, 100mA, 1A, 10A 4 ranges	
Accuracy	10mA, 100mA range : 20Hz ~ 50Hz : ± (1.5% rdg + 100 digits) 50Hz ~ 10kHz : ± (0.5% rdg + 100 digits) 10kHz~20kHz : ± (2% rdg + 200 digits) 1A, 10A range : 50Hz ~ 10kHz : ± (1% rdg + 100 digits)	
<b>RESISTANCE</b>		
Range	100Ω, 1kΩ, 10kΩ, 100kΩ, 1MΩ, 10MΩ, 100MΩ 7 ranges	
2W Accuracy	100Ω range : ± (0.1% rdg + 8digits) (*) 1kΩ range : ± (0.08% rdg + 5 digits) (*) 10kΩ ~ 1MΩ 3 ranges : ± (0.06% rdg + 5digits) 10MΩ range : ± (0.3% rdg + 5 digits) 100MΩ range : ± (3% rdg + 8 digits)	
4W Accuracy	100Ω range : ± (0.05% rdg + 8 digits) (*) 1kΩ ~ 1MΩ 4 ranges : ± (0.05% rdg + 5 digits) 10MΩ range : ± (0.3% rdg + 5 digits) 100MΩ range : ± (3% rdg + 8 digits)	
<b>DIODE TEST</b>	Open Circuit Voltage 2.0V, Test Current 0.5mA	
<b>FREQUENCY</b>	10Hz~800kHz	



**GDM-8255A**

**GDM-8251A Rear Panel**



**GDM-8255A Rear Panel**



SPECIFICATIONS	
<b>CONTINUITY BEEPER</b>	
1 ~ 100Ω	Define by user
<b>TEMPERATURE</b>	
0 ~ 300 °C	J, K, T Type
<b>OTHER FUNCTIONS</b>	
Auto range / Manual, Math : MX + B / % / 1/X	
Max, Min, dBm, dB, REL, Hold, Compare, Store, Recall	
<b>DISPLAY</b>	
VFD, Two Colors Display	
<b>INTERFACE</b>	
Digital I/O, USB, RS-232C	
<b>POWER SOURCE</b>	
AC 100V~240V± 10%, 50/60Hz	
<b>DIMENSIONS &amp; WEIGHT</b>	
265(W) x 107(H) x 350(D) mm, Approx. 2.6 kg	
NOTE : (*)USE "REL" Mode	

ORDERING INFORMATION	
<b>GDM-8255A</b>	199,999 Counts Dual Display Digital Multimeter
<b>GDM-8251A</b>	120,000 Counts Dual Display Digital Multimeter
ACCESSORIES :	
Quick start user manual x 1, Power cord x 1, Test lead GTL-117 x 1, USB Cable GTL-247	
CD x 1 (including complete user manual, upgrade program and PC software DMM Viewer),	
Calibration key GDM-01 x 1 (Compatible with Fluke 5720A/5725A calibrators only)	
<b>OPTION</b>	
Opt.01	Scanner Card (GDM-SC1 for GDM-8255A only)
<b>OPTIONAL ACCESSORIES</b>	
<b>GTL-108A</b>	4W Type test lead
<b>GTL-232</b>	RS232C Cable, 9-pin female to 9-pin, null modem for computer
<b>FREE DOWNLOAD</b>	
<b>PC Software</b>	DMM-VIEWER
<b>Driver</b>	USB Driver
	LabVIEW Driver

**GDM-SC1 Scanner card**

Multipoint Testing can be facilitated by simple insertion of scanner card.  
For: GDM-8255A



**GTL-108A 4W Type Test Lead**

For: GOM-801H/802, GDM-8255A/8251A

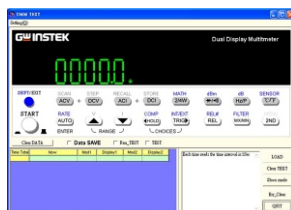


**GTL-232 RS-232C Cable**

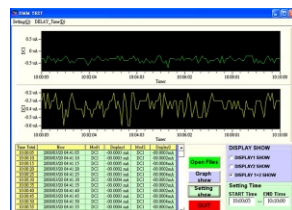
For: GDM-8255A/8251A



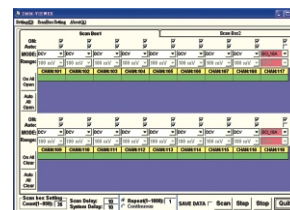
**DMM-Viewer PC Software**



General Control Mode



Reload-Data Graphic



Scanner Control Mode