

Instructions
for
EDSYN ^{INC} [®]

FXF11

FUMINATOR[®]

Bench Top Fume Extractor Fan with Task Light



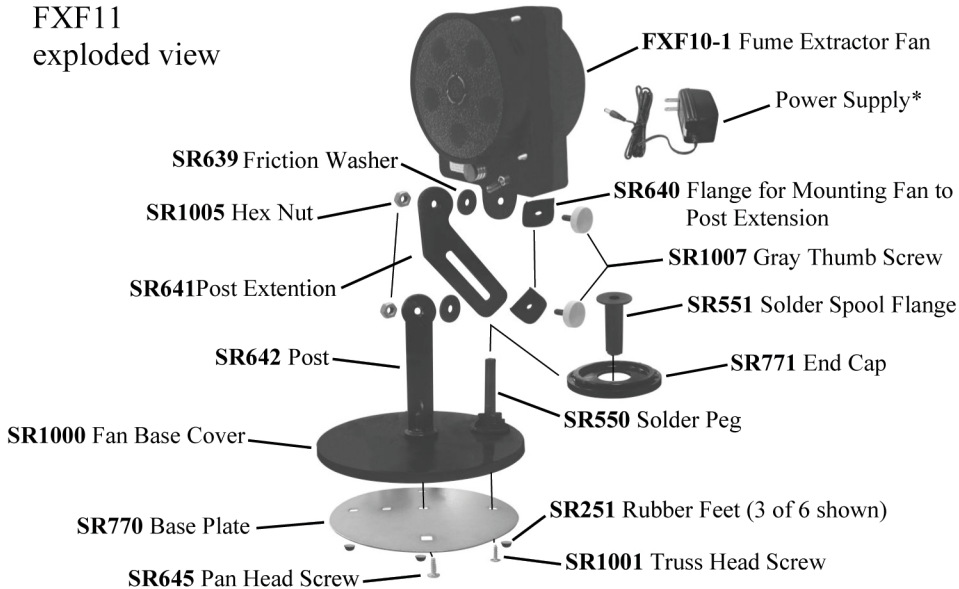
Solder not
Included

Product Features

- Patented Front Rotating Filter provides 8 times better filtration than stationary filter with Rear Charcoal Impregnated Filter
- Powerful 12V fan removes unwanted fumes and particles away from user
- Quick and easy filter replacement with fan blade safety grill to protect user
- 2 Point Sliding Arm positions Fan to almost any working angle
- Larger 1" Diameter Fine Thread Thumbscrews easier to use and see
- Bright Front White LED provides task lighting and Yellow LED shows air out
- ESD Safe and Ultra-quiet operation
- 90 day warranty (does not include filters)

FXF11

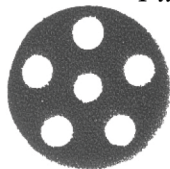
exploded view



Primary Rotating Filter

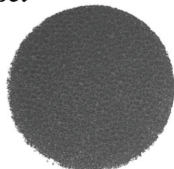
The XF02 filter element rotates at the same speed as the fan blades. Fumes and residues are evenly distributed.

Filter Set



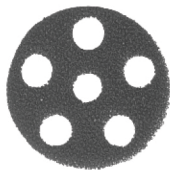
1 XF02

Primary Rotating Filter



1 XF03

Charcoal Impregnated
Stationary Filter



(set of 5)

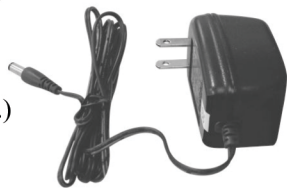
Charcoal Impregnated Stationary Filter

(set of 5)

*Power Supply

SR538

for 115V (U.S.A.)



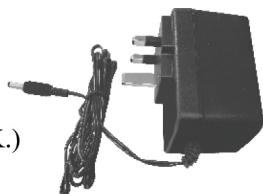
SR572

for 230V (Europe)

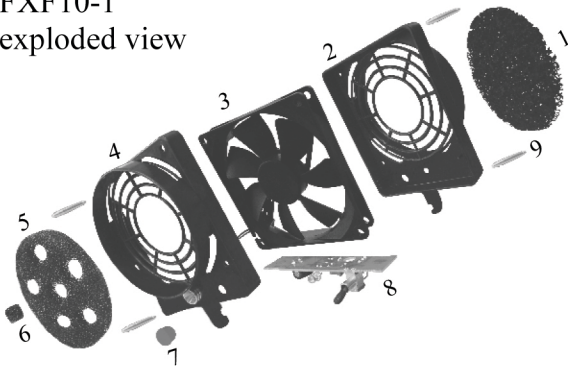


SR821

for 230B (U.K.)



FXF10-1
exploded view



- 1. XF03 Charcoal Impregnated Stationary Filter (Set of 5)
- 2. SR489 Fan Cage (Back)
- 3. SR474 Fan Motor
- 4. SR1006 Fan Cage (Front)
- 5. XF02 Primary Rotating Filter (Set of 5)
- 6. SR768 Center Felt Filter
- 7. SR1004 Light Diffuser
- 8. SR475 Circuit Board Assembly
- 9. SR1003 Spacer Dowel (Set of 4)

WARNING:

Removing pins may cause fan cage to crack. To avoid damage please send in for repairs.

Filter Replacement

- 1. Pull out dirty filter from hub when fan is off.
- 2. Replace with new XF02 Primary Rotating Filter or XF03 Charcoal Impregnated Stationary Filter



Front View
(air input)



Rear View
(air output)

White LED
(provides task lighting*)
*Use diffuser cap to dim white LED.

Yellow LED
(indicates air flow away from fan)

Universal 12VDC Input
Jack Type: J4 Female 2.1 mm x 5.5 mm. Recommended 12VDC, 500mA Power Supply

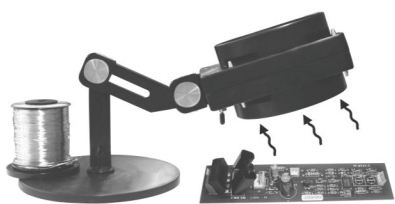
Variable Positioning



when extracting residue from the operator.

The XF02 and XF03 filter elements can be used separately. For maximum filtration, install both filters.

For Cooling and Drying



Position the FXF11 close to the area that needs to be cooled or dried. When used for drying caution is required due to some debris in filter.

Specifications

Power Requirements	12VDC
Overall Dimension	5.5"W x 12"H x 5.5"D 140 mm x 305 mm x 140 mm
Weight	1.09 lbs (.49 kg)

For more information check out our instruction video on YouTube

Warranty

Edsyn stands behind its products. We warrant that new tools will be free from defects for 90-days from the date of purchase. During this time period Edsyn will repair or, at its option, replace the tool at no charge. This warranty does not include tips and accessories. Any tool that appears to have been deliberately abused, altered, or destroyed is not covered by this warranty.

Technical Support

Contact our Customer Service for assistance related to the purchase of this product or recommendations on a challenge that you may encounter. There are many replacement parts that are available to keep your tool in top condition. To speak to someone in Customer Service, call 818-989-2324.

©Copyright 2012 by EDSYN®, Inc. All Rights Reserved

No part of this publication, including individual icons, may be reproduced or utilized in any form or by any means without the written permission of EDSYN®, Inc.



Designed Patented & Assembled in U.S.A.

Design, color, weight, and material subject to change without notice. Components from other designs may be used with information pertaining to it, but not applicable to another use.

Labels and instructions will supersede this information.



Phone: 818-989-2324 • FAX: 818-997-0895

Email: info@edsyn.com • Internet: www.edsyn.com

Address: 15958 Arminta St, Van Nuys, CA 91406

Form. 878

Rev D