

3 Watt Linear UHF Amplifier For:

- Signal Distribution
- Communications
- Lab Use



Featuring:

- 150 KHz – 300 MHz
- Rugged Compact Design
- Low Distortion
- Solid State Reliability
- Forced Air Cooling



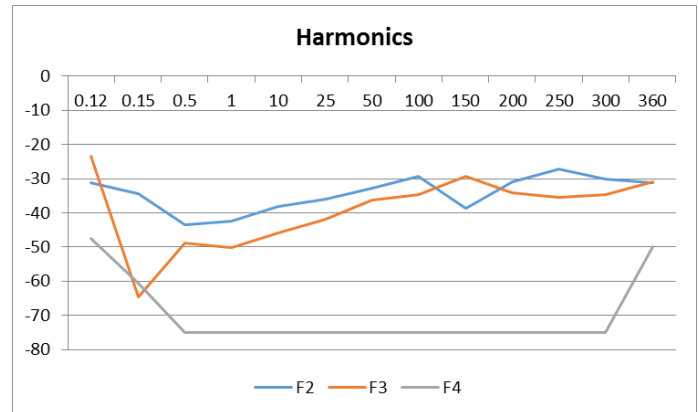
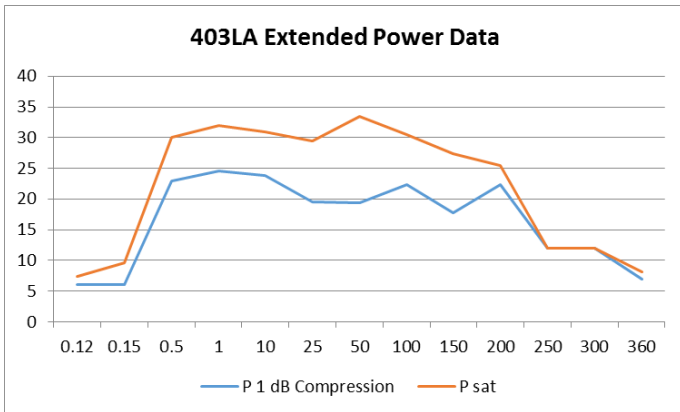
403LA POWER AMPLIFIER

E&I 403LA Specifications*

| | |
|------------------------------------|---|
| Class of Operation: | Class A |
| Frequency Coverage: | 150 KHz – 300 MHz |
| Rated Power: | 3.0 Watts |
| Saturated Power: | 8 Watts |
| Power Gain: | 37 dB nominal |
| Gain Flatness: | +/- 2dB |
| Input Power for Rated Pout: | 1 mw (0 dBm) |
| Input Impedance / VSWR: | 50 Ω / 1.5:1 |
| Output Impedance / VSWR: | 50 Ω / 2:1 |
| Harmonic Level: | < -25 dBc @ 3W Pout |
| Ruggedness: | ∞:1 VSWR |
| Stability: | Unconditional into any passive or reactive load |
| Protection: | Unit will withstand input signal of +13 dBm without damage (1.0 V rms) max. |
| Third Order Intercept: | IP3 ~ 45 dBm typical |
| AC Input: | 100 – 240 VAC 47-63 Hz 1 A @ 120V 0.5 A @ 240V |
| Temperature Range: | 0° – 45° C |
| Cooling: | Forced Air |
| Dimensions (H x W x D): | 3.5 x 6.2 x 10.5 inches 88 x 157 x 267.5 mm |
| Weight: | 7 lbs (3.2 Kg) |
| Connectors: | BNC |
| Rack Mounting: | Optional |
| RF Input Signal: | AM, FM, SSB, Pulsed |



403LA POWER AMPLIFIER



Performance into 50 ohms

| Input | | | | Amplifier Gain Nominal dB | Output | | | |
|----------------------|-------|----------------|----------------|---------------------------------|---------------------|-------|----------------|----------------|
| Input Power Watts | dBm | V p-p Volts | V rms Volts | | Output Power dBm | Watts | V p-p Volts | V rms Volts |
| 0.000200 | -7.00 | 0.28 | 0.10 | 37 | 30.00 | 1.00 | 20.00 | 7.07 |
| 0.0004 | -3.48 | 0.42 | 0.15 | 37 | 33.52 | 2.25 | 30.00 | 10.61 |
| 0.0008 | -0.98 | 0.57 | 0.20 | 37 | 36.02 | 4.00 | 40.00 | 14.14 |
| 0.0012 | 0.96 | 0.71 | 0.25 | 37 | 37.96 | 6.25 | 50.00 | 17.68 |



Electronics & Innovation, Ltd.
 150 Research Blvd.
 Rochester, NY 14623
 Tel: 585-214-0598 / Fax: 585-214-0580
www.eandiltd.com