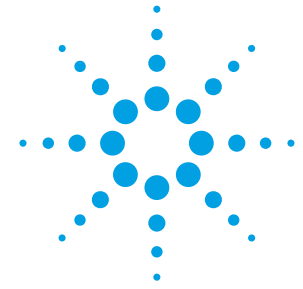


Quick Fact Sheet

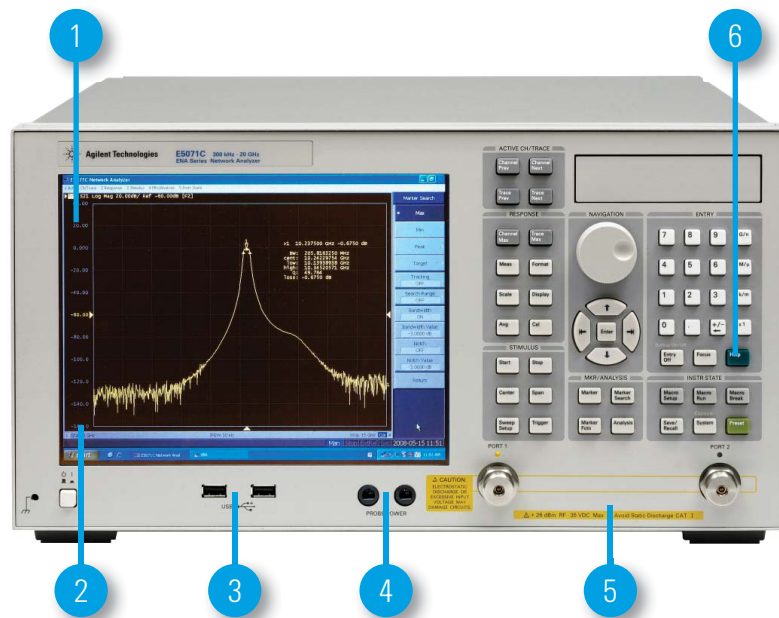
Agilent E5071CEP Express Configuration

9 kHz - 20 GHz vector network analyzer

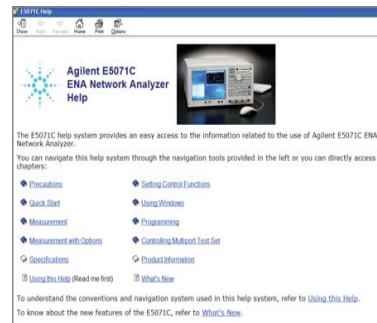


The industry standard in RF Network Analysis

Agilent's E5071CEP ENA series network analyzer – express configuration deliver new standards in speed, accuracy, and versatility for RF network analysis. Designed with a wide range of measurement capabilities to meet multiple network analysis needs, the E5071CEP offers efficiency and flexibility for both manufacturing and R&D applications in industries such as: wireless communication, automotive, semiconductor, and medical.



1. 160 measurement channels and 16 measurement traces
2. 10.4-inch LCD touch screen
3. USB ports (Front x 2, Rear x 4)
4. Dual probe power source
5. 2-port S-parameter test set
6. Context sensitive embedded help



Embedded help appears on the display

Key Features

1. Best-in-class performance for accurate and high-cost-performance tests and measurements
 - Wide dynamic range: > 123 dB
 - Fast measurement speed: 41 ms at 1601 points with full 2-port cal
 - Low trace noise: < 0.004 dBrms at 70 kHz IFBW
2. Intuitive user interface and PC connectivity for quick and easy operation
 - Windows OS with LAN/USB/GPIB connection
 - Built-in VBA for test automation or making customized GUI
 - 8753 series look & feel button and code translator
3. Useful functions that fit your measurement needs
 - Powerful calibration
 - Fixture Simulator

Same great products, now offered with off-the-shelf delivery and value pricing

The Agilent E5071CEP ENA series network analyzer express configuration is the most popular configuration for fast delivery and value. Created to get necessary tools into your hands more quickly, the express configurations provide the performance of an ENA series network analyzer delivered to you RIGHT NOW through Agilent's distribution partners. Express configurations are fully upgradable, so as your needs change, you can optimize your test equipment with additional options.



Agilent Technologies

Quick Fact Sheet

Agilent E5071CEP ENA Series Network Analyzer - Express Configuration

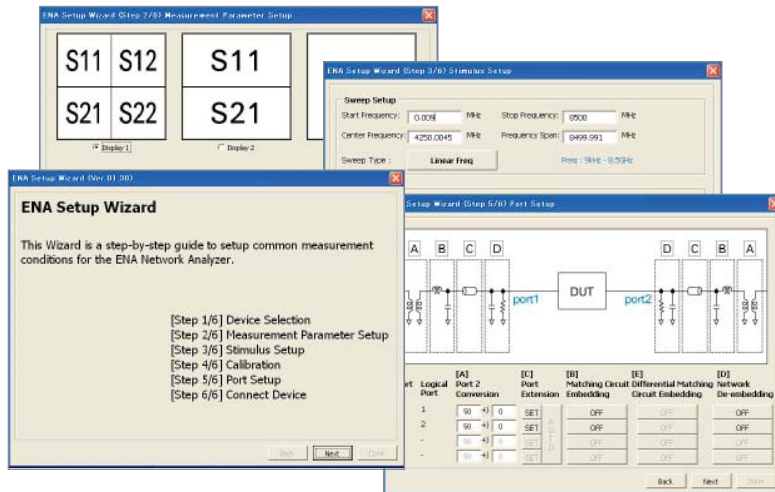
9 kHz - 20 GHz vector network analyzer

Model

Options	Description
E5071CEP	ENA Series Network Analyzer - Express Configuration

Options

Test set options	Frequency	Connector type	Number of port	Bias tee
E5071CEP-240	9 kHz to 4.5 GHz	Type-N(f)	2	No
E5071CEP-280	9 kHz to 8.5 GHz	Type-N(f)	2	No
E5071CEP-2K5	300 kHz to 20 GHz	3.5 mm (m)	2	Yes



The Set up Wizard using built-in VBA guides the user through all the required steps, making setup, error correction, and measurement intuitive and error free.

Recommended Accessories

Cables and bias tee

Model	Description
N6314A	Test port cable, type-N (m-m), 50 Ω , 24 inches
N4419AK20	Test port cable, 3.5 mm (m-f), 36 inches
11612A	Bias Network, 45 MHz to 26.5 GHz

Calibration kit for option 240 and 280 (below 9 GHz)

Model	Description
85032F	Standard mechanical calibration kit, DC to 9 GHz, type-N, 50 Ω
85033E	Standard mechanical calibration kit, DC to 9 GHz, 3.5 mm
85092C	RF electronic calibration module, 300 kHz to 9 GHz, type-N(f), 2-port
85093C	RF Ecal module, 300 kHz to 9 GHz, 3.5 mm, 2-port

Calibration kit for option 2K5 (over 9 GHz)

Model	Description
85052D	Economy mechanical calibration kit, 3.5 mm, DC to 26.5 GHz
N4691B	Ecal module, 300 kHz to 26.5 GHz, 3.5 mm, 2-port

www.agilent.com/find/express

www.agilent.com/find/express-e5071c

For additional product information, refer to following literature.

Technical overview: 5990-7847EN

To find a distributor in your area, go to www.agilent.com/find/distributors

Product specifications and descriptions in this document subject to change without notice.

© Agilent Technologies, Inc. 2010, Printed in USA, April 18, 2011

5990-7812EN



Agilent Technologies