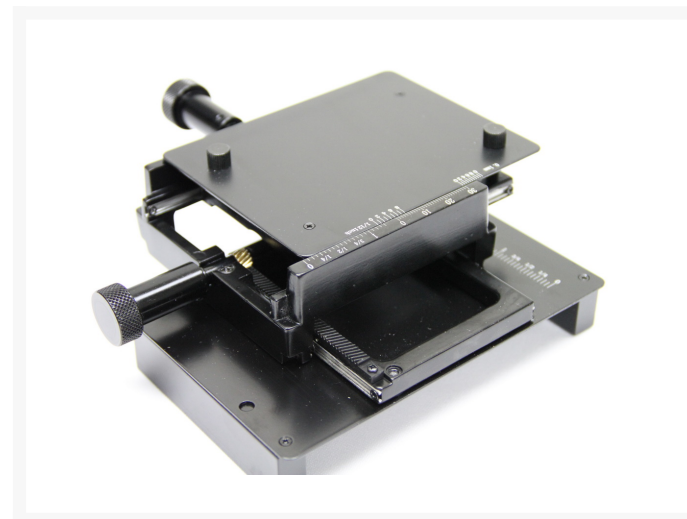
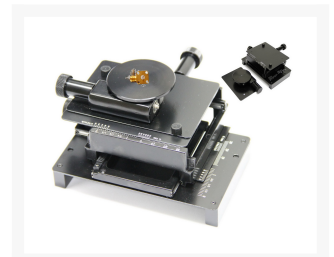




MS15X-S1

\$169

Product Images



Description

Multifunctional X/Y fine adjustment and rotational base designed for precise adjustment under Dino-Lite microscopes. The included rotating table connects directly to the top plate of the X/Y stage allowing for simple rotation of the viewing subject. The precision machine crafted components provide for smooth movements and adjustments in positions with the knurled rotation knobs.

- Travel Area: X:1.5" / Y:1.25"
- X/Y Table Size: 3.25" x 4.25"

Additional Information

Warranty Period	1 year
Manufactured in	China
Service & Support	U.S. (www.dinolite.us) English & Spanish
Regulatory Approval	ROHS
Dimensions	12.7cm (W) x 15.2cm (L) x 7.6cm (H)
Weight	907g
Material	Metal
Flexibility	360° Movement, XY Movement
Compatible with	All Dino-Lite Handheld Microscopes
Package Includes	Base, Stage
Package Dimensions	30.5cm(L) x15.2cm(W) x 6.7cm(H)
Package Weight	1.1kg

