

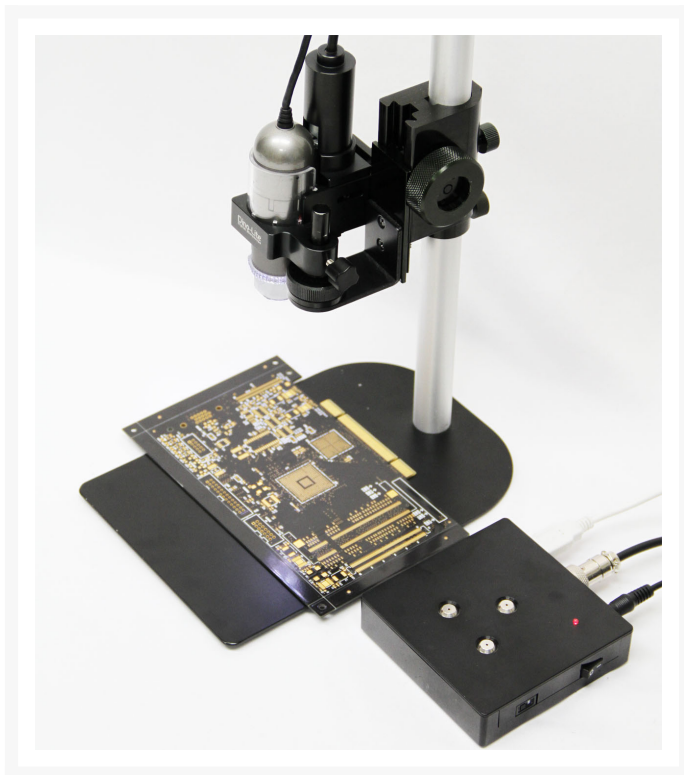


MSKM-01

\$399

Product Images





Description

The MSKM-01 is an optional attachment that allows control of the Dino-Lite microscopes focus knob without touching the device. It can be used in specific conditions when the Dino-Lite microscope has to be isolated during use, such as: using it in a hazardous environment, when integrated into a machine, used in an enclosed space, and etc. Controlling the Dino-Lite can be done by using a control box tethered to the MSKM-01 or use with DinoCapture 2.0 software. When using with DinoCapture 2.0, the knob motor can be controlled by the right and left mouse buttons similar to the MSKM-01's control box. MicroTouch on the control box works as a snapshot trigger to take pictures directly into the software. Motor: 12 V, 9.5 RPM

*Note: MS35B, RK-10A, or RK-06A stand & Dino-Lite microscope required for use, sold separately

Additional Information

Warranty Period	1 year
Manufactured in	Taiwan
Service & Support	U.S. (www.dinolite.us) English & Spanish
Regulatory Approval	CE, FCC, ROHS
Dimensions	77.14mm (L), 65.55mm (W), 98mm (H)
Weight	340g (Motor) 110g (Control Box)
Material	Metal
Compatible with	All Dino-Lite models sold in 2014 or later. Please contact us to confirm compatibility with earlier models.
Package Includes	Motor, Control Box, C-Clip, Set Screws, AC Adapter, USB Cable, Male/Female 2 Pin Circular DIN Connector, Software CD
Package Dimensions	18.5cm(L) x 7.3cm(W) x 21.6cm(H)
Package Weight	1.2kg

