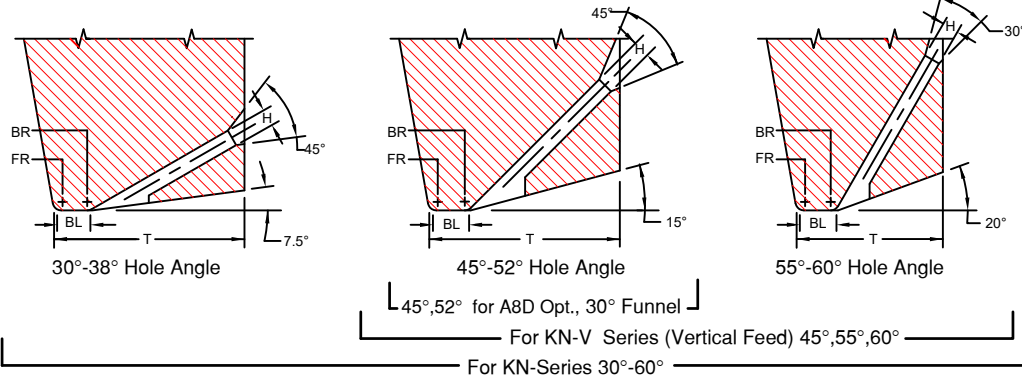


SERIES KN & KN-V

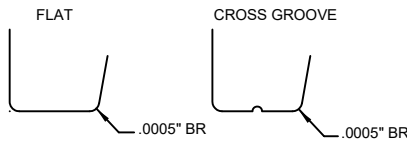
SMALL WIRE & LARGE WIRE

FOR AUTOMATIC BONDERS



Available Vertical Hole Ø marked with X

	TD		TDF		For Vertical Hole
	in.	mm	in.	mm	
1/16	.0624	1.59	.0460	1.17	
1/16	.0624	1.59	.0590	1.50	X
	.0784	1.99	.0630	1.60	
	.0784	1.99	.0720	1.83	X
3/32	.0937	2.38	.0880	2.24	X
	.1180	3.00	.0985	2.50	
1/8	.1249	3.17	.0937	2.38	
1/8	.1249	3.17	.1180	3.00	



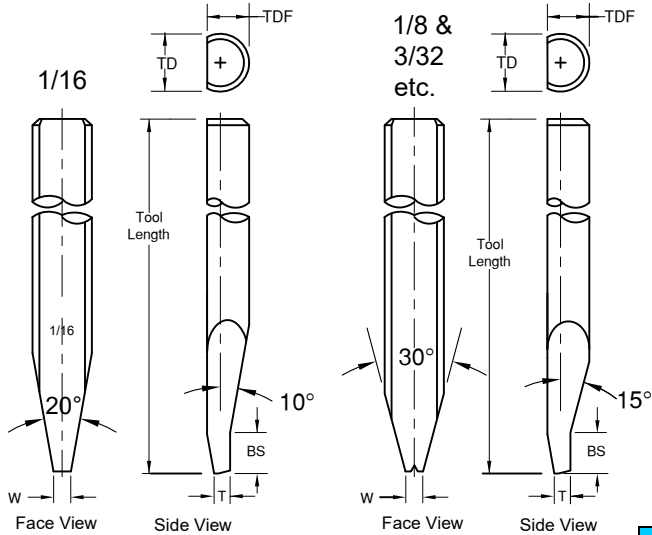
We recommend a .0005" back radius and a cross groove or a flat bond foot when ordering tools for gold wire thermosonic bonding. For more gold wire application information see Tech Tip

KN-SERIES SMALL WIRE

.0005" through .0020" wire Ø

KN-SERIES LARGE WIRE

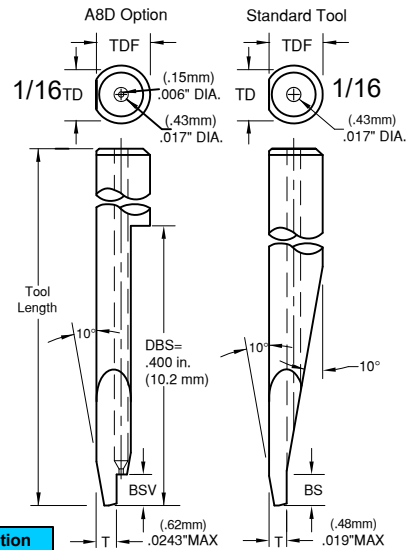
.0030" through .0160" For wire Ø



Standard: Ø 1/16, 45° to 52° Hole Angle : BS"=.045" (1.14mm) .
Supplies only to Standard size Ø1/16, larger tool Ø are different.
Standard: (BS) supplied unless otherwise specified. See Tool Options #A3

KN-V SERIES VERTICAL FEED DEEP ACCESS

.0005" through .0020" wire Ø

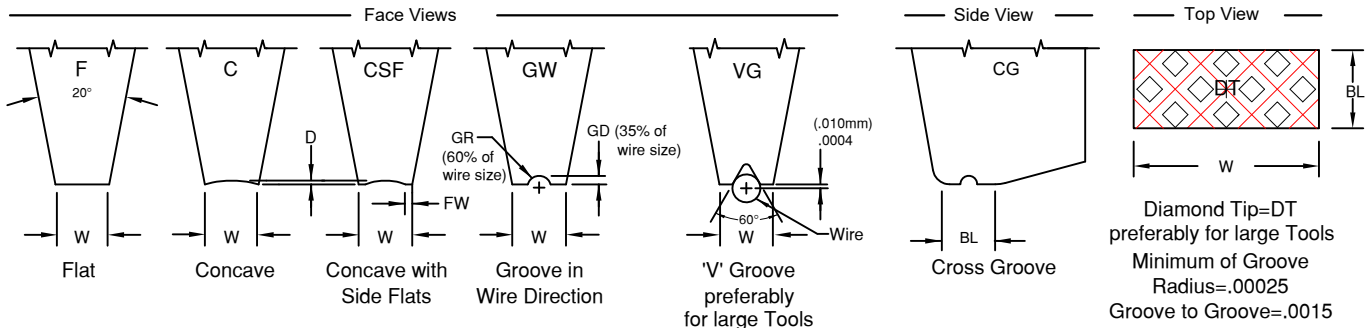


NOTE: We recommend our A8D option for enhanced wire control. Our standard vertical feed has slightly more clearance but less wire control. See in Tool Options for illustration. To order just add A8D in space 11. Not suitable for F&K and Hesse Mechatronics machine

A8D Option

Hole Angle	BSV	
	in.	mm
45°	.035	.89
52°	.050	1.27

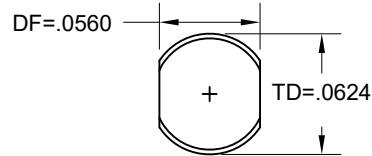
Standard: Ø1/16 45° to 52° Hole Angle : BS"=.045" (1.14mm)
Standard: (BS) supplied unless otherwise specified. See Tool Options
No Front Angle if T=MAX



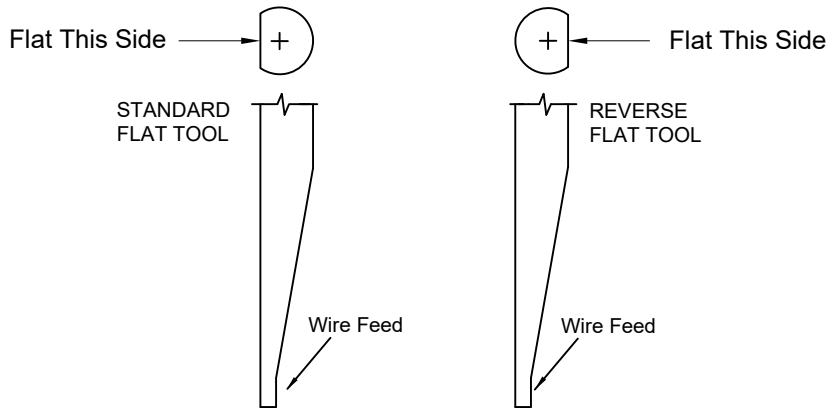
OPTIONS



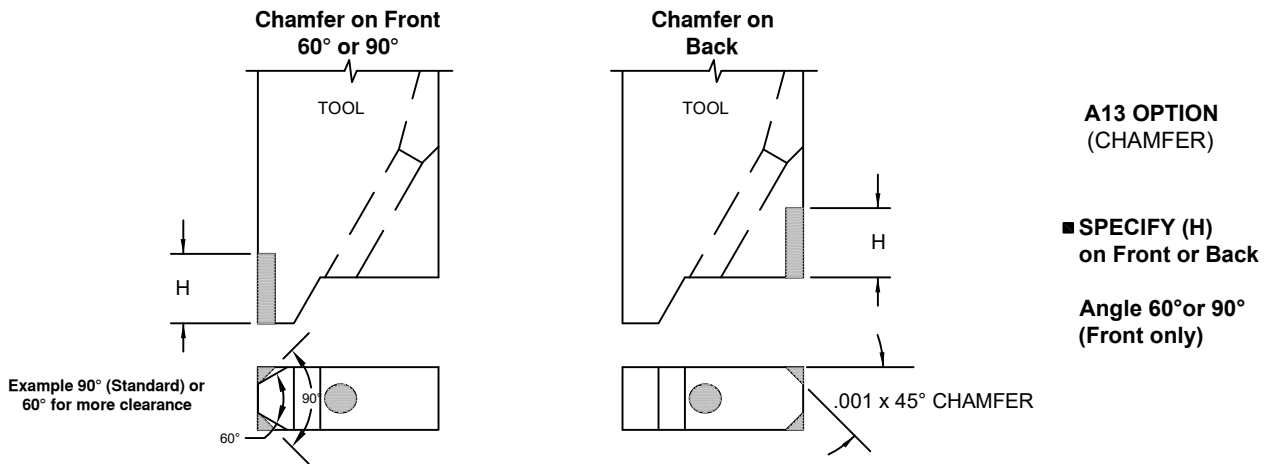
Below are shown various problem situations that can occur during bonding operations and their solutions. When choosing an option, please note the corresponding option number (A1, A2, etc.) when completing the part number from the Ordering Information sections. **These option numbers should appear as the last item in the part number.**



**A10 OPTION
(DOUBLE FLAT)**



**A12 OPTION
(REVERSE FLAT)**

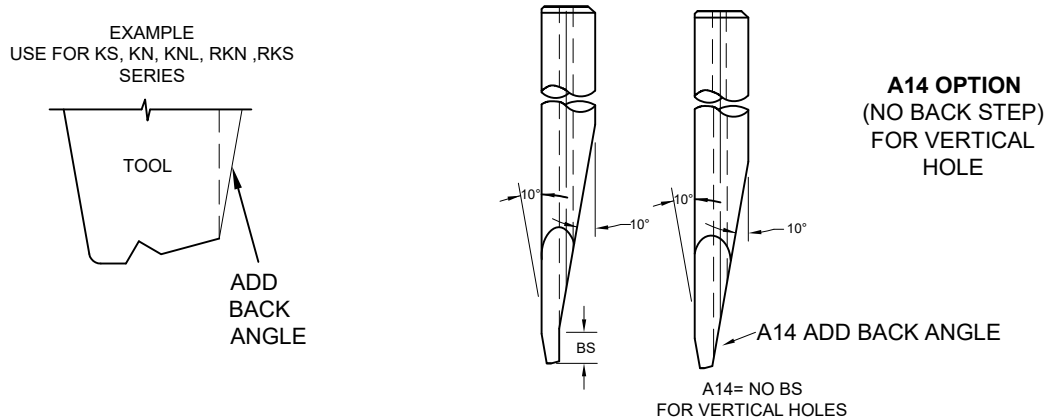


**A13 OPTION
(CHAMFER)**

■ SPECIFY (H)
on Front or Back

Angle 60° or 90°
(Front only)

NO BACK STEP FOR TOOLS WITH VERTICAL HOLE



**A14 OPTION
(NO BACK STEP)
FOR VERTICAL
HOLE**

A14= NO BS
FOR VERTICAL HOLES