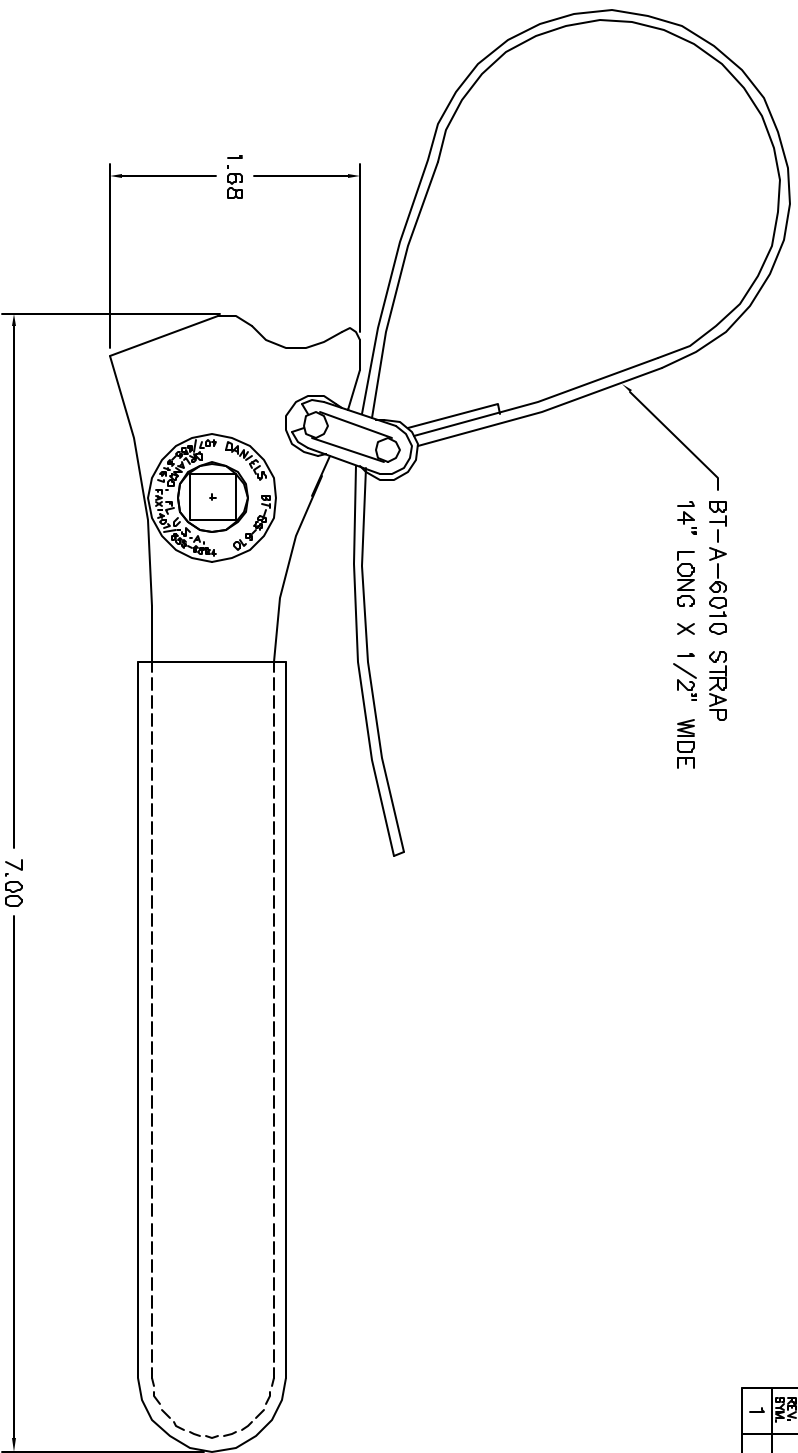


REV.	EQD. NUMBER	DESCRIPTION	BY DATE	APP'D DATE
1		ORIGINAL RELEASE	10/29/91	10/78



**UNCONTROLLED DOCUMENT
WILL NOT BE UPDATED**

RESTRICTED & CONFIDENTIAL		MATERIAL		ITEM		PART NO.		QTY.		DESCRIPTION/REMARKS	
CONFIDENTIAL PROPERTY OF DANIELS MANUFACTURING CORP. NOT TO BE REPRODUCED OR TRANSMITTED IN ANY FORM OR BY ANY MEANS, ELECTRONIC OR MECHANICAL, INCLUDING PHOTOCOPYING, RECORDING, OR BY ANY INFORMATION STORAGE AND RETRIEVAL SYSTEM, WITHOUT PERMISSION IN WRITING BY DANIELS MANUFACTURING. ALL RIGHTS RESERVED. THIS DRAWING IS THE PROPERTY OF DANIELS MANUFACTURING CORP. AND IS LOANED TO YOU FOR YOUR USE ONLY. IT IS NOT TO BE REPRODUCED OR TRANSMITTED IN ANY FORM OR BY ANY MEANS, ELECTRONIC OR MECHANICAL, INCLUDING PHOTOCOPYING, RECORDING, OR BY ANY INFORMATION STORAGE AND RETRIEVAL SYSTEM, WITHOUT PERMISSION IN WRITING BY DANIELS MANUFACTURING.		HEAT TREAT		DRN.	PD	DATE	DATE				
				CHG'S	JS	10/29/91	10/29/91				
FINISH				APPR'D.		DATE		TITLE		WEIGHT LEGEND	
								STRAP WRENCH ENVELOPE DRAWING		CAD P/N BT-BS-610-ENV	
DO NOT SCALE DRAWING				NOTE:		THIS DRAWING IS AN OUTLINE DRAWING OF THE RESPECTIVE CHG PART NUMBER INDICATED. ACTUAL DIM PART NUMBER IS SHOWN. THE "-ENV" SUFFIX		SCALE B NTS		DIMS IN BT-BS-610-ENV	