



# Agilent DAQ with Matlab for Medical Science

## Case Study

### Introduction

Agilent data acquisition (DAQ) units can now work with MATLAB®, thanks to a MATLAB adaptor that acts as a plug-in, allowing the users to control the DAQ product family with the MATLAB DAQ Toolbox.

MATLAB is a suitable programming platform to be used in conjunction with the DAQ because of its versatility in:

- a) Mathematics and computation
- b) Algorithm development
- c) Data acquisition
- d) Modeling, simulation, and prototyping
- e) Data analysis, exploration, and visualization
- f) Scientific and engineering graphics
- g) Application development including Graphical user interface (GUI) building

It is recommended that the users understand the basics of MATLAB programming before you start with any application that involved the Agilent DAQ.



**Agilent Technologies**

# Operating Principle

The following prerequisites are required before the users use the Agilent DAQ with MATLAB:

- Agilent IO Libraries Suite 14.2
- Agilent U23XX or Agilent U25XX IVI-COM driver
- MATLAB DAQ toolbox
- Agilent U2300A or U2500A MATLAB DAQ toolbox adaptor

Correct installation depends on which DAQ family is being used. Therefore, it is recommended that the users install the U2300A or U2500A MATLAB DAQ Toolbox Adaptor and also the IVI-COM driver.

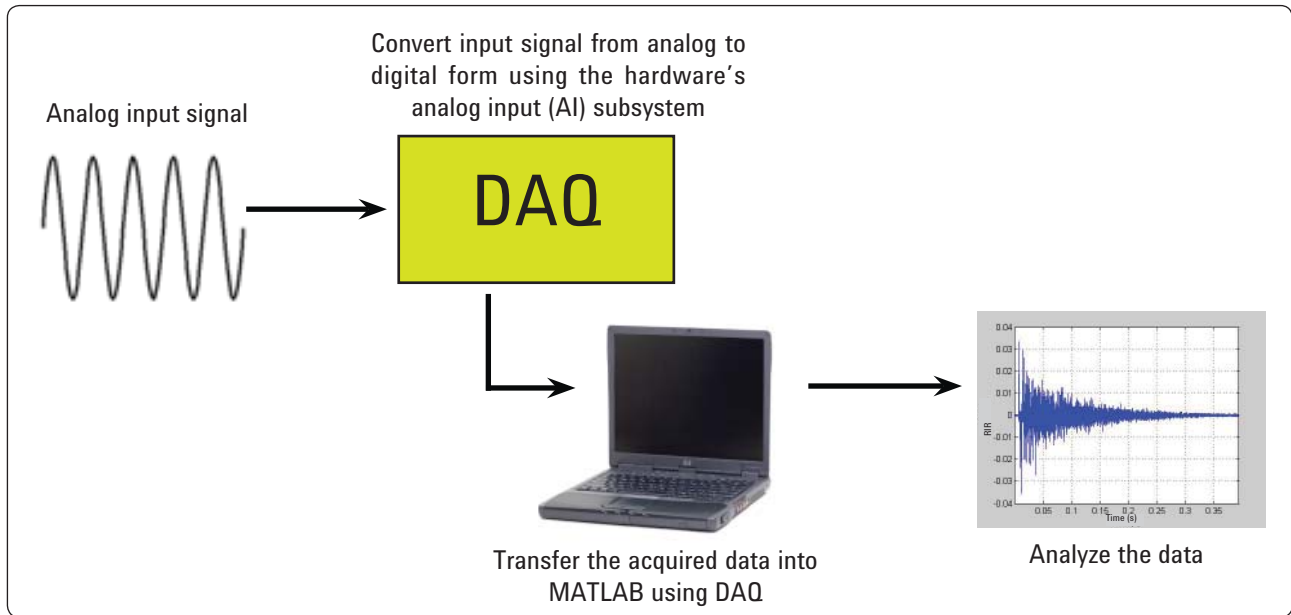


Figure 1. DAQ with MATLAB flow system

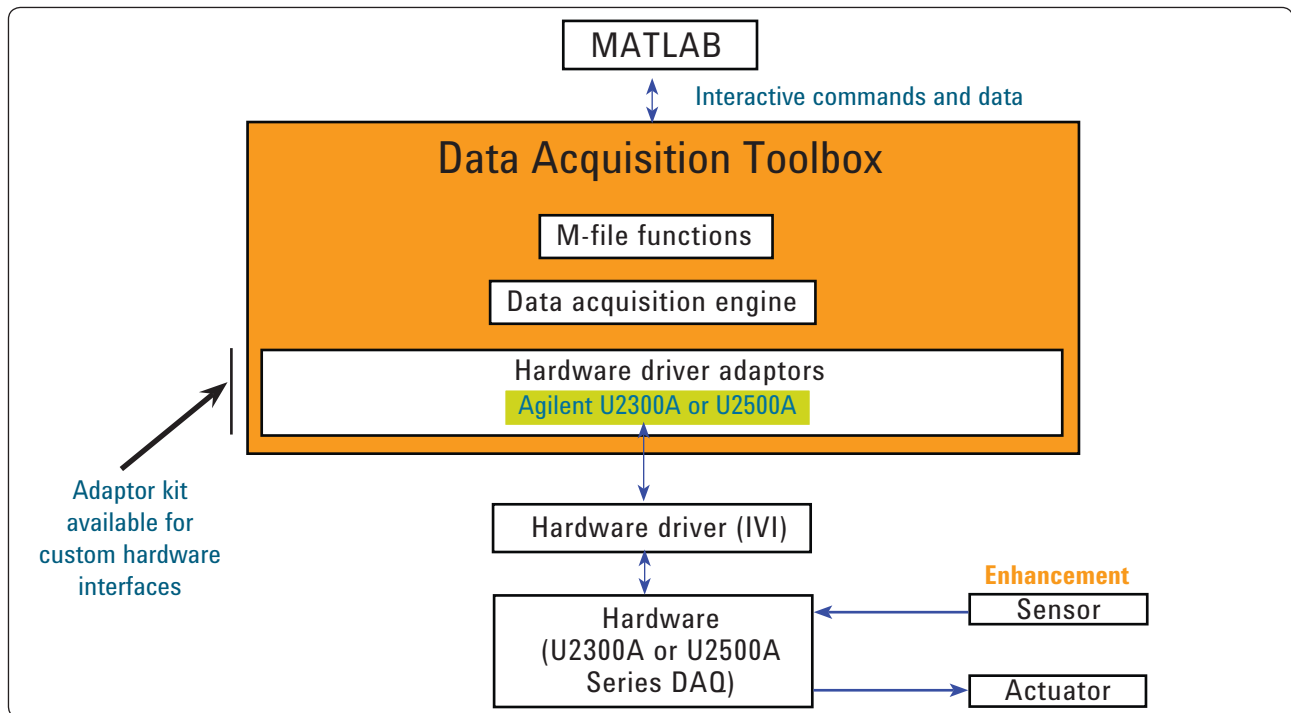


Figure 2. DAQ architecture

## System Configuration

MATLAB can be used with an Agilent data acquisition unit in medical research, as illustrated by the following example. Human and animal brains are constantly making decisions that cause neurons to fire, creating neural voltage spikes. The spike information can be gathered by implanted circuitry and an extremely low power transmitter that reads these neural spikes from the brain and transmits the information back to be processed by a nearby receiver link.

Although the receiver can be set to the proper frequency and modulation type in order to receive the transmitted signal, a good deal of computation and digital processing is required to recover and analyze the incoming data. MATLAB can be used with the DAQ unit to digitize the analog receiver data for further analysis.

- For the transmitter portion:

A voltage is encoded as an 8-bit word (eg.: 0 being 0 V and 255 being 1 mV). There is a known packet structure in the transmission: 11XXXXXXXX0.

- For the receiver portion:

This receiver will receive the wireless data from the transmitter and digitize it using DAQ. MATLAB will control the acquisition and data analysis. Then, MATLAB will perform the Fast Fourier Transform (FFT), apply the clock-recovery algorithm, resample data, align words, and graph live data.

The above configuration enables the users to plot live neural spikes as voltage versus time. Refer below for an example on how the data acquisition process is done using MATLAB and DAQ.

An example of MATLAB code is shown below:

### 1) MATLAB control of data acquisition

```
% set acquisition variables
```

```
sampleRate = 2000000
```

```
% samples/s
```

```
acquisitionTime = inf
```

```
% seconds
```

```
% setup acquisition
```

```
ai = analoginput ('agilentu2500', 0)
```

```
% create analoginput object ai
```

```
chan = addchannel (ai, 0)
```

```
% create analoginput channel chan
```

```
set (ai, 'samplerate', sampleRate)
```

```
% setup ai acquisition
```

```
set (ai, 'samplespertrigger', acquisitionTime*sampleRate)
```

```
% inf to continuously acquire data
```

## System Configuration (continued)

### 2) FFT to recover clock

*% We take an FFT of the data and plot the power spectral density as a function of frequency*

```
N = length (SampledSignal)*2
```

*According to Nyquist theory, it would be good to have 2x points for FFT but recommendation is 10x points.*

```
f = fft (Edges, N);
```

```
Pyy = f. *conj (f) / (N)
```

```
freq = sampleRate / (N) * (N/2-1) ;
```

```
subplot (2,1,2) ;
```

```
semilogx (freq,Pyy(1:N/2));
```

```
title ('Power spectral density');
```

```
xlabel ('Frequency (Hz)');
```

*% We take an FFT of the data and plot the power spectral density as a function of frequency*

```
N = length (SampledSignal)*2;
```

*According to Nyquist theory, it would be good to have 2x points for FFT but recommendation is 10x points.*

```
f = fft (Edges, N);
```

```
Pyy = f.*conj(f)/(N);
```

```
freq = sampleRate/(N)*(0:(N/2-1));
```

```
subplot (2,1,2);
```

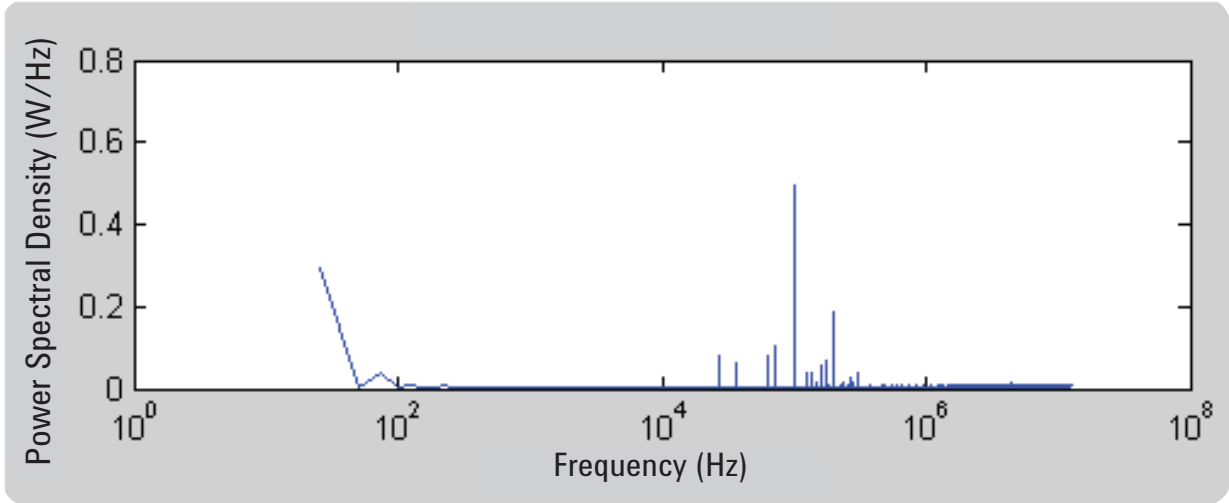
```
semilogx (freq,Pyy(1:N/2));
```

```
title ('Power spectral density');
```

```
xlabel ('Frequency (Hz)');
```

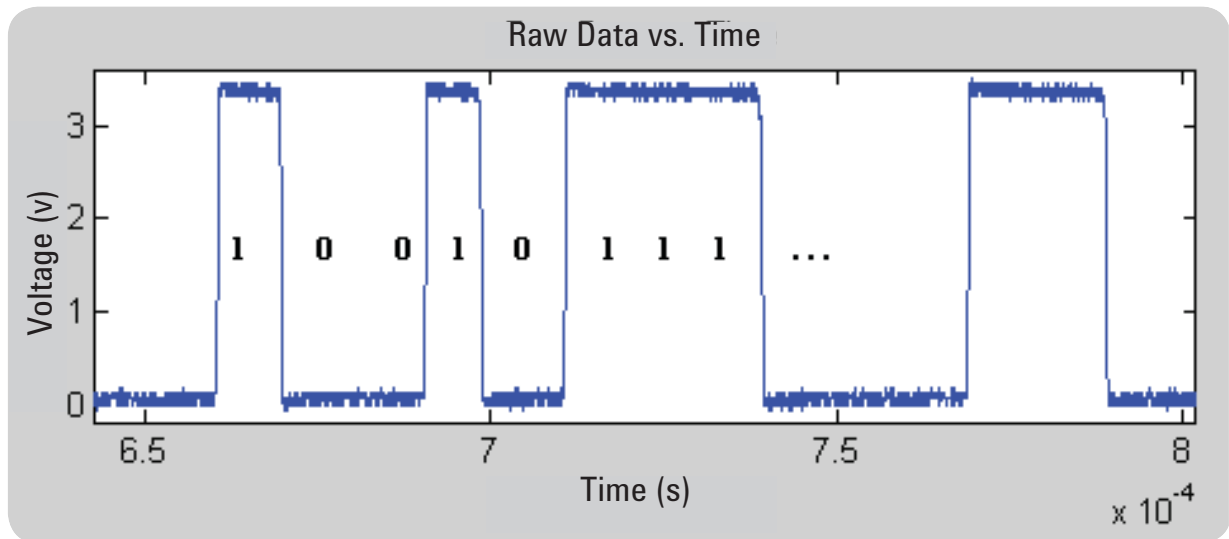
## Power Spectral Density and Clock Recovery

MATLAB enables the users to utilize its mathematical capability and perform functions such as power spectral density plot shown below:



**Figure 3.** Sample of power spectral density graph

The data is resampled before it converts all the samples into bits based on clock recovery. This will convert a large MATLAB vector of samples into a vector of 1's and 0's. The basic idea is highlighted on the graph below:



**Figure 4.** Deciphering the graph into binary data

# Transmission Packet Structure

The transmission packet structure is of the pattern 11XXXXXXXXX0. This means there are two 1s, 8 data bits, and a 0 in every word. The users need to align the captured data properly in order to find the first valid data. Figure 5 is a plot that demonstrates how the data is captured. The upper portion shows the misaligned data whereas the lower portion shows the aligned data. The red pixels in the graph represent 1s, and the blue pixels represent 0s. The top graph is created before the data alignment, while the bottom graph is created after the data alignment. The leading 1s and trailing 0s are eliminated, leaving with a lot of 8-bit data words.

Now the users can grab each voltage value as a function of time and can plot the data to view the neural spike data.

The users need to be aware that an off-the-shelf wireless receiver will have a “data out” channel to be connected to the DAQ for sampling, processing, and analysis using the MATLAB program. However, the receiver usually does not come with clock recovery, and thus it is important for MATLAB to perform FFT to determine the sampling rate of the received data.

The sample rate must be determined in order for the users to align the data properly.

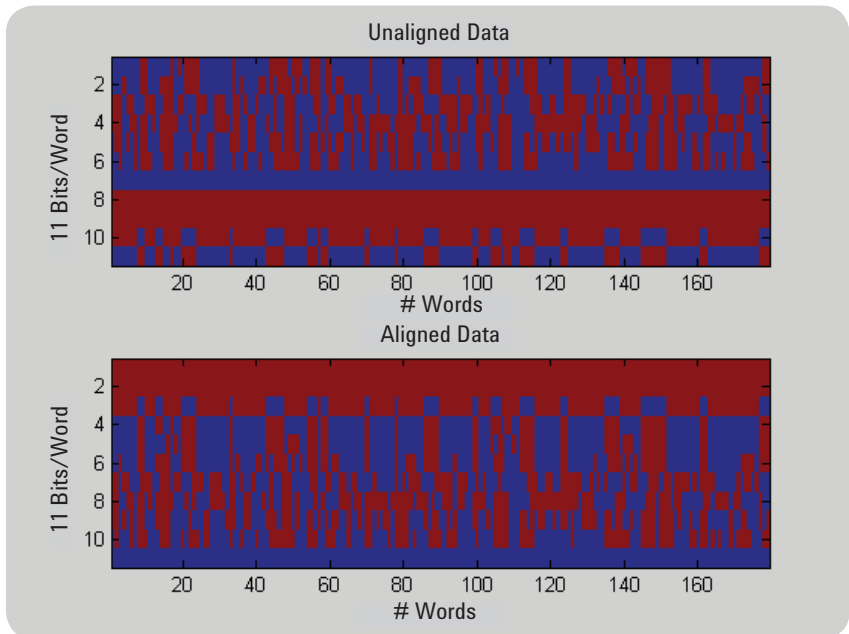


Figure 5. The difference between unaligned data and aligned data

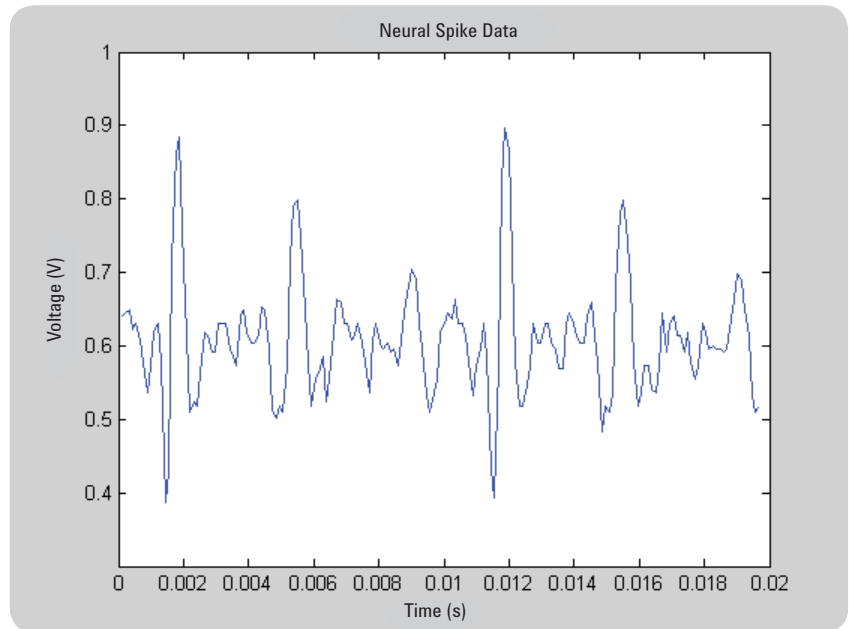


Figure 6. Neural spike readings as voltage versus time

## Summary

This case study illustrates how a DAQ such as the Agilent’s U2531A could be used in medical research, among many industries. The ability to take advantage of Data Acquisition Toolbox software, in conjunction with the MATLAB technical computing environment, such as data exploration and visualization in MATLAB’s programming platform will allow the users to engage in medical research and medical science breakthroughs.

## Reference

- [1] R.R. Harrison, P.T. Watkins, R.J.Kier, R.O.Lovejoy, D.J.Black, B.Greger, F.Solzbacher, "A Low-Power Integrated Circuit for a Wireless 100-Electrode Neural Recording System," IEEE Journal of Solid-State Circuits, vol.42, pp. 123-133, January 2007.
- [2] J. Holleman and B. Otis, "A Sub-Microwatt Low-Noise Amplifier for Neural Recording," in Proc. IEEE Engineering in Medicine and Biology Society Conference, pp. 3930-3933, August 2007.
- [3] Woradorn Wattanapanitch, Michale Fee, Rahul Sarpeshkar, "An Energy-Efficient Micropower Neural Recording Amplifier," IEEE Transactions on Biomedical Circuits and Systems, vol. 1, pp.136-147, June 2007.
- [4] J. L. Bohorquez, J. L. Dawson, A. P. Chandrakasan, "A 350 $\mu$ W CMOS MSK transmitter and 400 $\mu$ W OOK super-regenerative receiver for Medical Implant Communications," IEEE Symposium on VLSI Circuits, pp. 32-33, 2008.



### Agilent Email Updates

[www.agilent.com/find/emailupdates](http://www.agilent.com/find/emailupdates)  
Get the latest information on the products and applications you select.



### Agilent Direct

[www.agilent.com/find/agilentdirect](http://www.agilent.com/find/agilentdirect)  
Quickly choose and use your test equipment solutions with confidence.



[www.agilent.com/find/open](http://www.agilent.com/find/open)  
Agilent Open simplifies the process of connecting and programming test systems to help engineers design, validate and manufacture electronic products. Agilent offers open connectivity for a broad range of system-ready instruments, open industry software, PC-standard I/O and global support, which are combined to more easily integrate test system development.

*MATLAB is a U.S. registered trademark of the Math Works, Inc.*

## Remove all doubt

Our repair and calibration services will get your equipment back to you, performing like new, when promised. You will get full value out of your Agilent equipment throughout its lifetime. Your equipment will be serviced by Agilent-trained technicians using the latest factory calibration procedures, automated repair diagnostics and genuine parts. You will always have the utmost confidence in your measurements. For information regarding self maintenance of this product, please contact your Agilent office.

Agilent offers a wide range of additional expert test and measurement services for your equipment, including initial start-up assistance, onsite education and training, as well as design, system integration, and project management.

For more information on repair and calibration services, go to:

[www.agilent.com/find/removealldoubt](http://www.agilent.com/find/removealldoubt)

Product specifications and descriptions in this document subject to change without notice.

[www.agilent.com](http://www.agilent.com)  
[www.agilent.com/find/matlab\\_usbDAQ](http://www.agilent.com/find/matlab_usbDAQ)

For more information on Agilent Technologies' products, applications or services, please contact your local Agilent office. The complete list is available at:

[www.agilent.com/find/contactus](http://www.agilent.com/find/contactus)

### Americas

Canada	(877) 894-4414
Latin America	305 269 7500
United States	(800) 829-4444

### Asia Pacific

Australia	1 800 629 485
China	800 810 0189
Hong Kong	800 938 693
India	1 800 112 929
Japan	0120 (421) 345
Korea	080 769 0800
Malaysia	1 800 888 848
Singapore	1 800 375 8100
Taiwan	0800 047 866
Thailand	1 800 226 008

### Europe & Middle East

Austria	01 36027 71571
Belgium	32 (0) 2 404 93 40
Denmark	45 70 13 15 15
Finland	358 (0) 10 855 2100
France	0825 010 700*
	*0.125 €/minute
Germany	07031 464 6333**
Ireland	1890 924 204
Israel	972-3-9288-504/544
Italy	39 02 92 60 8484
Netherlands	31 (0) 20 547 2111
Spain	34 (91) 631 3300
Sweden	0200-88 22 55
Switzerland	0800 80 53 53
United Kingdom	44 (0) 118 9276201

Other European Countries:

[www.agilent.com/find/contactus](http://www.agilent.com/find/contactus)

Revised: October 1, 2008

© Agilent Technologies, Inc. 2009  
Printed in USA, June 16, 2009  
5990-4134EN



**Agilent Technologies**