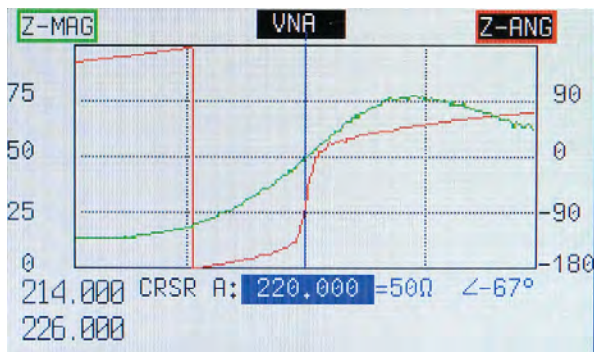


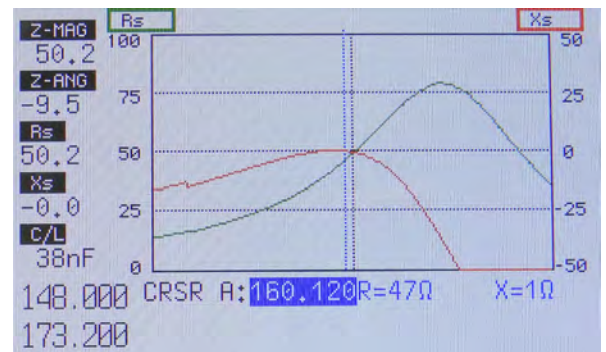
The Bravo Ex² Analyzer is a Network Analyzer with frequency range of 100KHz to 525MHz that accurately measures Impedances from 0 to 2000 Ohms, Resistance, Impedance Angle, X, Return Loss, and SWR. The Bravo Ex² can simultaneously provide graphical display for any two measurement parameters. The frequency sweep is plotted in the X axis and independent left and right Y axis scales are user selectable. The Bravo's portability makes it the ideal test instrument for field or lab use. Additionally, our Bravo products come with Site Analyzer PC Vision™ software. This application permits remote control operation of the Bravo Ex² to upload test results to a PC or laptop, view the VNA or Smith Charts in full color, store and print complete analyzer data. While the Bravo's LCD can support displaying two parameters, PC Vision can display one or all the testing parameters at once. The Bravo Ex² is fully rechargeable and includes "AA" NiMH batteries. This instrument will save time, reduce capital expenditures, and reduce costs typically associated with testing and tuning resonant devices and filters.



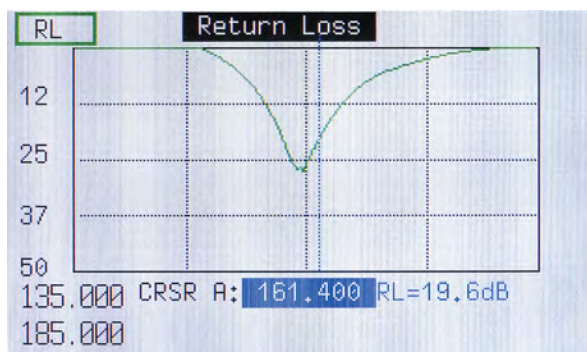
Multiple Measurements in One Rugged, Hand-held Package



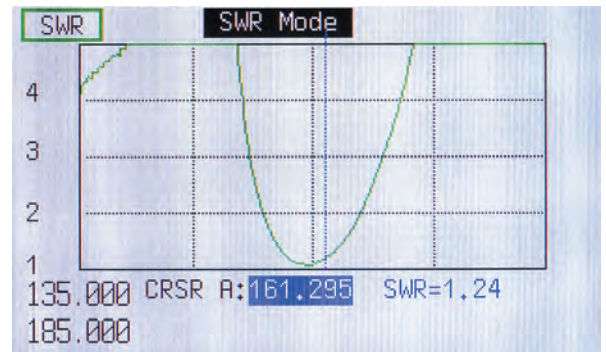
Mag and Phase



Resistance and Reactance



Return Loss



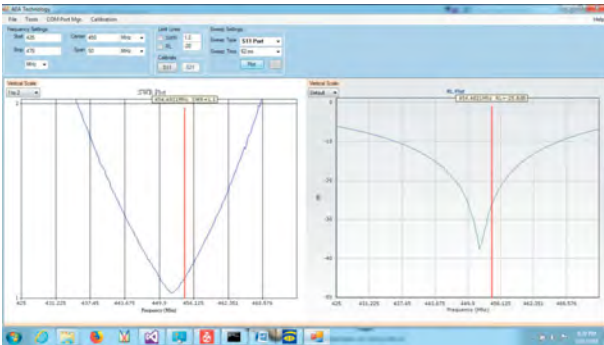
SWR

Key Specifications (for a complete list download the Operating Manual from our website)

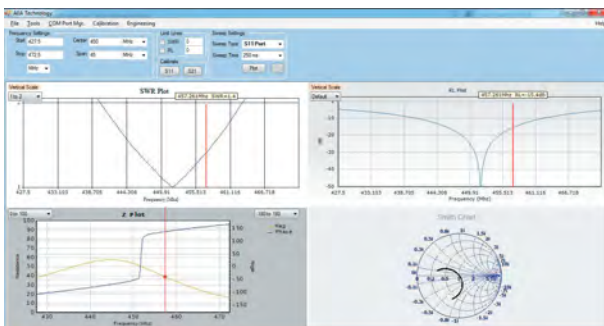
| | |
|----------------------------|--|
| Bravo Ex ² | SWR, Return Loss, Resistance, Reactance, Impedance and Impedance Angle |
| Frequency Range: | 100KHz – 525MHz |
| Tuning/Display Resolution: | 1Hz (100 KHz - 150MHz), 200Hz > 150MHz |
| Refresh Rate: | 2.5 times/second |
| Frequency Display: | 251 points |
| Measurement Speed: | 5ms / data point |
| Output Power: | -5 dBm @ 50 Ohms |
| RF Connectors: | "N" Type |
| Power requirements: | 12-20VDC @ 650mA min. or 8 AA Batteries |
| Size: | 8.5" x 4.3" x 2.25" (216 x 109 x 57 mm) |
| Weight: | 2.2 lbs (1.0 Kilogram) with belt case and batteries |
| Warranty | 2 years |

Specifications subject to change without notice

Make tuning clear and easy using Pc Vision application



View all measurement screens or zoom in on one...



Features:

- Quarter VGA back-lit color display (user selectable color scheme) Colors can be customized for best viewing
- One-button Auto-tune locates the coil's best SWR or Return loss
- Large numeric Format readout in CW mode
- Quickly shift between SWR, Return Loss and VNA functions
- Has "Cable Null" option to eliminate test lead or feed line
- Internal Memory can hold 100's of plots and setups
- Ultra Low-Magnetic signature
- Site Analyzer PC Vision™ application and USB-2 Cable included
- Save, recall and upload test results to a PC

Benefits:

- Economical Multi Function
- Very fast response time in graphical display mode
- Compact design makes it easy to carry on site
- Improves reliability
- Can be operated in remote control from a PC or laptop
- Document Unit under test performance and tuning
- Maintain servicing records for resonant devices and filters

Ordering Information:

6053-5000 Dual port unit Kit
The Bravo Ex² Analyzer Kit Includes:
 Bravo Ex² Analyzer
 "N" to BNC Adapter,
 Terminators BNC (short & 50 Ohm),
 Padded case
 6 ft USB Cable , AC adapter, Quick Start
 Guide, and CD with Operating Manual,
 Training PPT and Site Analyzer PC
 Vision™ application



Optional Accessories

Kit Carrying Case Part No. 6015-1002
 Large reinforced soft sided carrying
 case with product wells in closed foam
 insert and shoulder strap



Made in USA with US
and global parts



ISO 9001 Registered Company