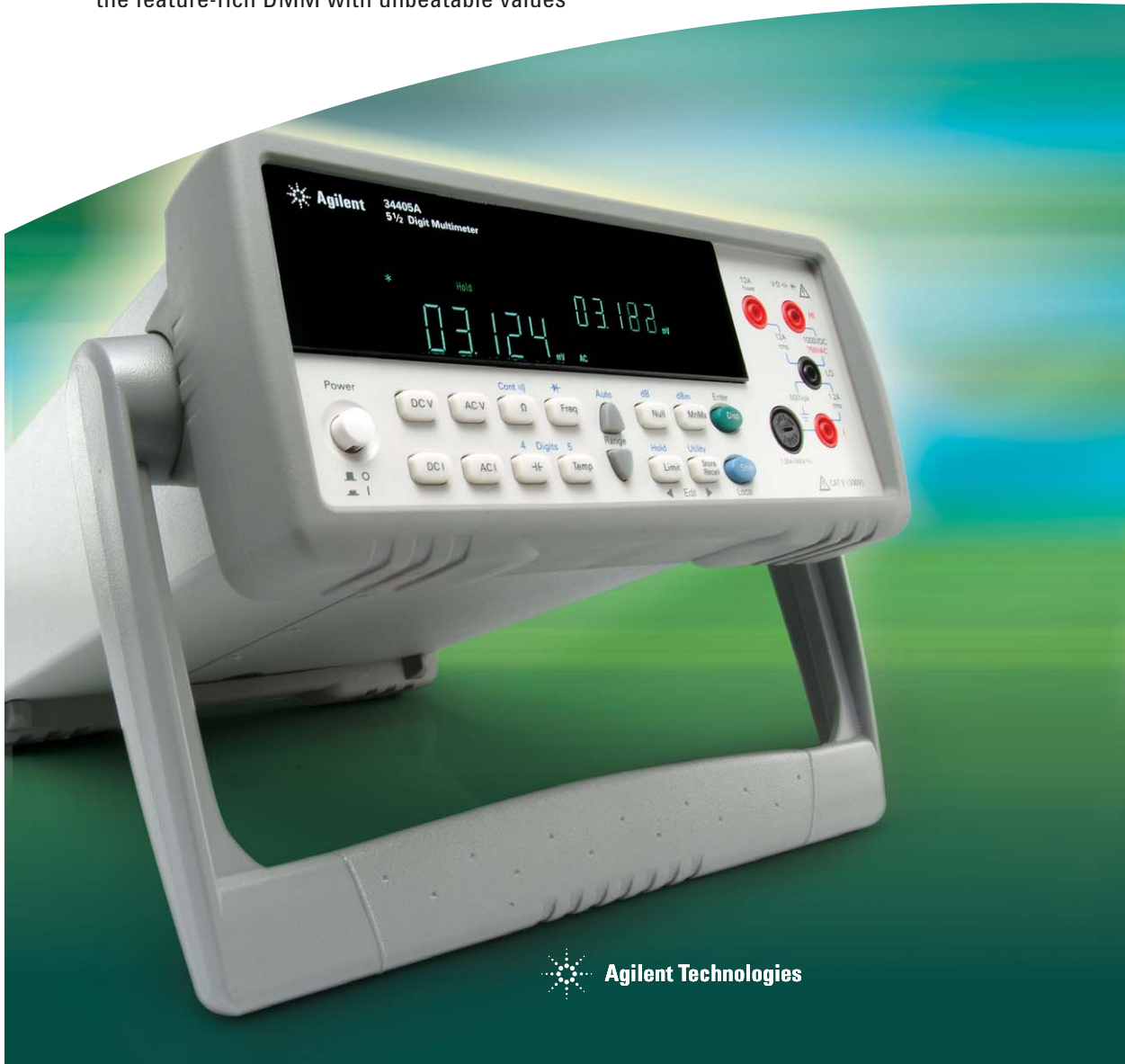


## Agilent 34405A Digital Multimeter

the feature-rich DMM with unbeatable values



## True Capability and Reliability

Affordable yet feature rich, the Agilent 34405A 5.5 digit digital multimeter comes with true capability and reliability for your demanding test and measurement applications.

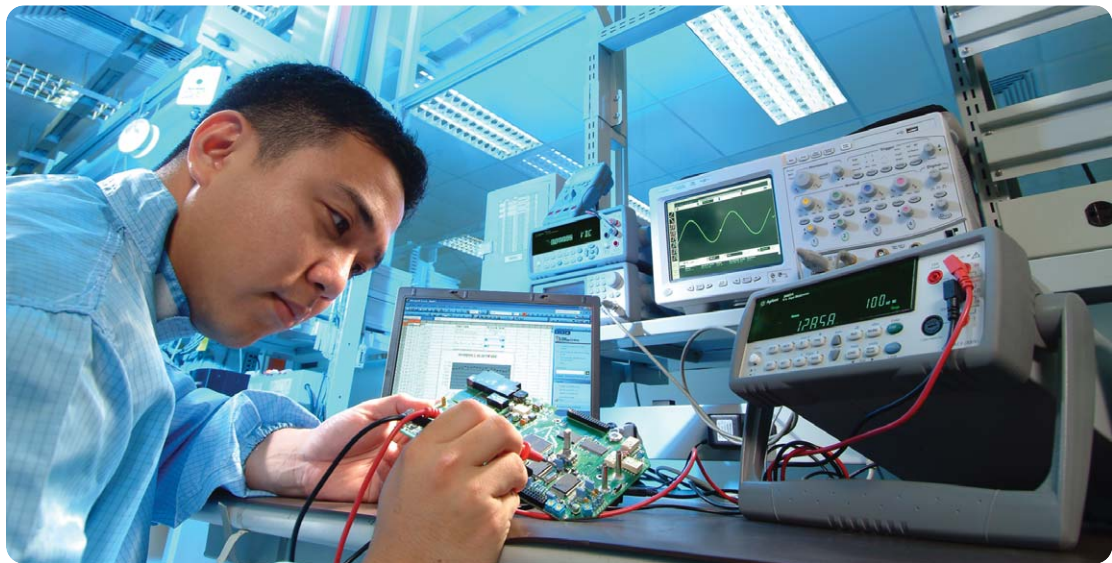
The 34405A is designed beyond meeting general industrial needs, covering voltage, current, resistance, frequency, diode test and continuity measurements. Its true value is more evident in its capability to 'stretch' temperature and capacitance measurements for better coverage over broader applications. Not only that, you can perform more efficient and accurate measurements with its built-in math functions.

With the 34405A, your measurements are made fast, easy and more convenient. Perform quick setup and remote control with the USB 2.0 (TMC-488.2 compliant) interface. Take two readings simultaneously from the same signal for better visibility and troubleshooting, leading to high throughput and productivity. Connect the 34405A to your PC, for 'unlimited' storage to capture intermittent signals and more flexibility in measurement configuration and data manipulation. You can also store/recall complete instrument setups to further save test time.

Designed to stringent quality controls and backed by a leading service and support team, the 34405A is your ideal instrument that's truly capable and reliable across a broad range of industries—be it R&D, design and validation, manufacturing or education.

### Features

- 120,000 counts resolution
- 16 built-in measurement functions, including temperature and capacitance
- 6 built-in math functions: Null, dBm, dB, MinMax, Limit and Hold
- Up to 70 readings per second
- 0.025% DC voltage accuracy
- USB 2.0 interface (TMC-488.2 compliant)
- SCPI compatible
- Comes with Agilent IO Library Suite, DMM Intuilink connectivity software, and IVI-COM and LabVIEW<sup>®</sup> drivers

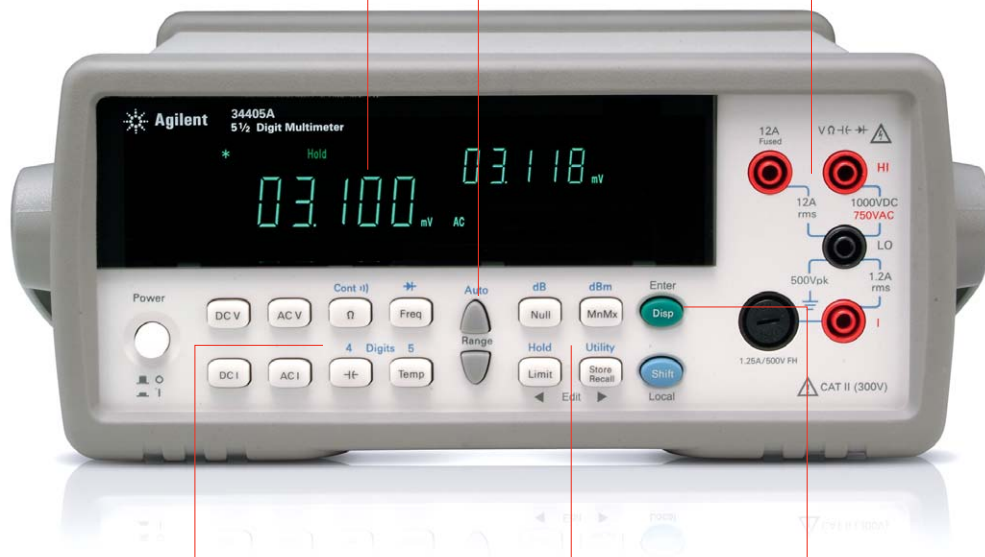


## More Features, Uncompromised Quality

Use the Up-Down keys to select the desired measurement range. Just press Shift ▶ Auto key to switch measurement range automatically.

5.5 digit dual display increases productivity and throughput in troubleshooting.

Connect the supplied test loads to the input terminals to start your measurements.



Superior value with a broad range of functions, including temperature and capacitance measurements.

Select secondary display measurements.

Math functions and utility menu that allow users to take reference measurements (ie. Min/Max value, etc.) and store measurement setups from the front panel.

## Ideal for Your Applications

### Designed for educators

The 34405A is designed with today's educators in mind. It is programmable with LabVIEW<sup>(1)</sup>, making it easy for integration into your existing system. It is not only affordable, but also built for robustness that insures your investment over the years to come.



*34405A's robust build and easy integration into existing systems make it ideal for today's research and teaching lab environments.*

*“Real capabilities don't come with a big price tag”*



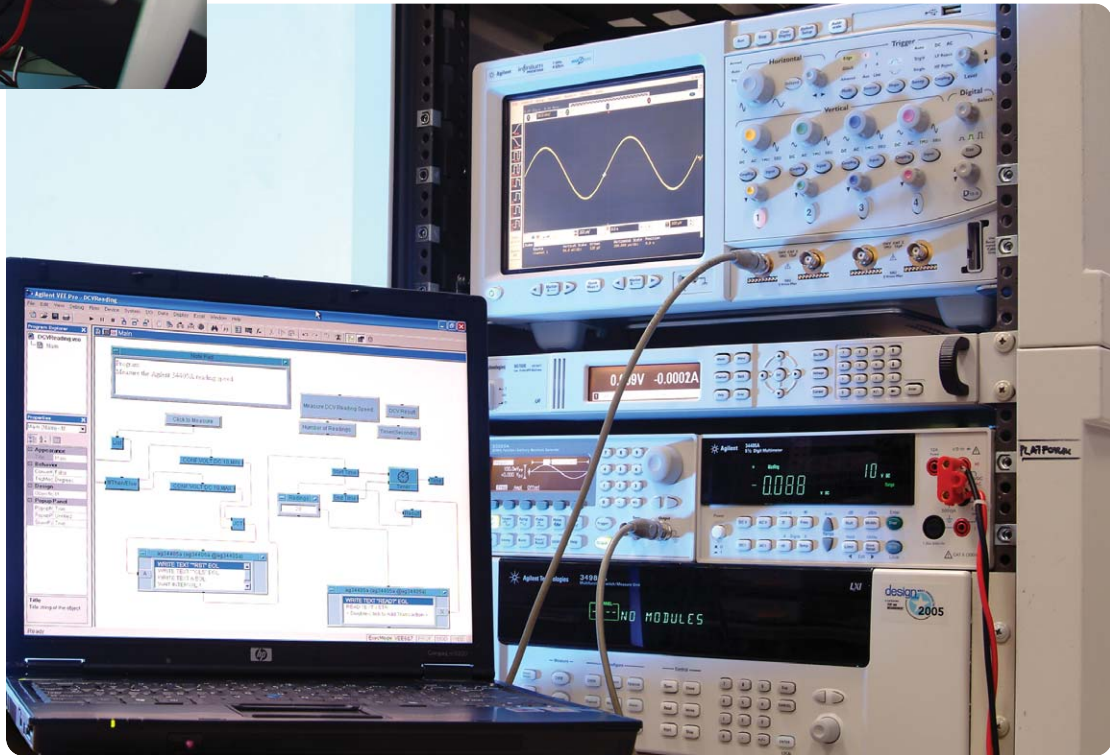


### Works well in manufacturing environments

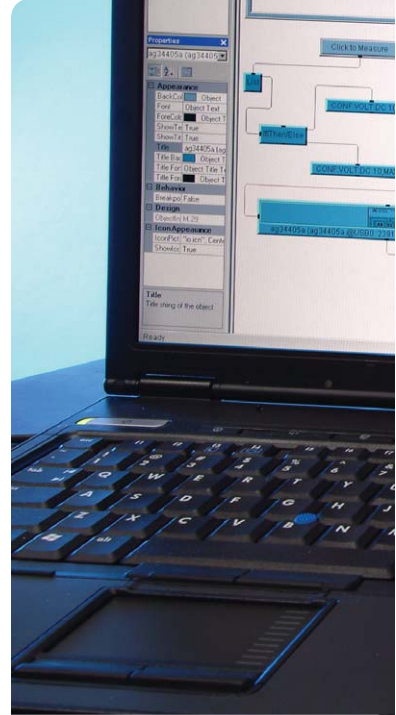
The 34405A is a perfect fit for the robust manufacturing industry as it is small, rack-mountable and rugged with its shock-absorbing bumpers. It is remote-controllable with industry-standard SCPI commands so you can conveniently configure your measurements from a distance. Save setup and configuration time of your instrument with USB connectivity. With its dual display feature, take two readings simultaneously from the same signal. Not only that, get accurate measurements (up to 70 readings per second) so you can make timely decisions for your high volume.



*Make quick and accurate measurements without instrument setup or configuration hassle*



## Ideal for Your Applications



### Quick connect to PC with built-in USB 2.0 interface

The 34405A's built-in USB 2.0 interface enables quick and easy connection to the PC with its USB interface, which is auto-detectable by the bundled award-winning Agilent IO Library Suite. Hence, you can save unnecessary setup time and perform your tests sooner. Its PC-connect capability allows you to remotely control the instrument with industry-standard SCPI commands.



*USB 2.0 interface makes the 34405A hot-swappable and auto-detectable, saving setup and configuration time.*



*An advocate of Agilent Open, the 34405A opens up to flexibility and customer convenience via system-ready instrumentation.*

### **Flexibility to work seamlessly with most software environments**

The 34405A is a member of the Agilent Open, providing flexibility for seamless integration into a test system. For easy integration with different programming environments, the 34405A is shipped with the Agilent IO Library Suite, LabVIEW<sup>®</sup> driver and IVI-COM driver.

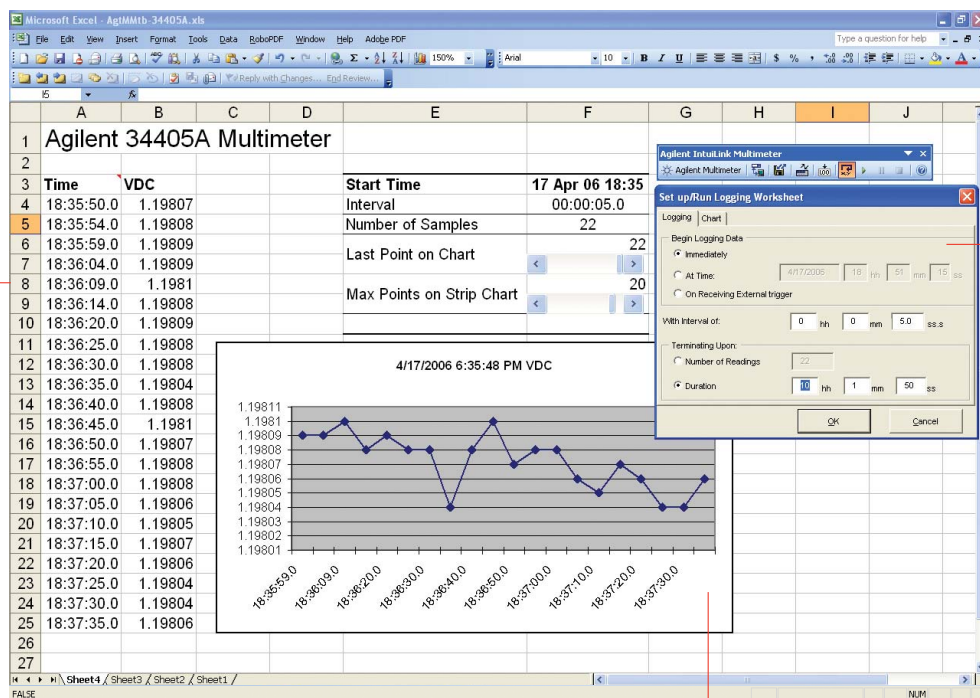


## Ideal for Your Applications

### Data logging setup in minutes with bundled Intuilink

The 34405A is the only instrument in its class that comes with an easy-to-use software—the ideal complement to customer’s measurement needs. The DMM Intuilink connectivity software is able to connect to the 34405A and data log directly from it through the USB port. Intuilink also gives users the flexibility to configure tests and export data for detailed analysis.

*Set the interval or duration for your measurement*



*Trend plot helps you analyze your results*

*View your measurements easily in table format*



The step-by-step guide on using Intuilink with the 34405A is available at [www.agilent.com/find/34405A](http://www.agilent.com/find/34405A) in the FAQ section. It answers the question, “How can I start using the software provided for data logging with the 34405A multimeter?”



## Specifications<sup>[2]</sup>

<b>Display</b>	VFD
<b>Resolution</b>	5.5 digits
<b>Operating specifications</b>	
DCV, DCI	70 readings/s
ACV, ACI	2.5 readings/s
Frequency	9 readings/s
<b>DC specifications</b>	
<b>DCV</b>	
Range	100 mV – 1000 V
Accuracy	0.025%
<b>DCI</b>	
Range	10 mA – 10 A
Accuracy	0.05%
<b>Resistance</b>	
Range	100 Ω – 100 MΩ
Accuracy	0.05%
<b>Continuity / Diode test</b>	Yes
<b>AC specifications</b>	
<b>True RMS ACV</b>	
Range	100 mV – 750 V
Accuracy	0.2%
<b>True RMS ACI</b>	
Range	10 mA – 10 A
Accuracy	0.5%
<b>Frequency</b>	
Range	300 kHz
Accuracy	0.02%

<b>Temperature measurement range</b>	– 80 °C to 150 °C
<b>Capacitance measurement range</b>	1 nF – 10,000 μF
<b>Math functions</b>	
Null	Yes
Hold	Yes
Min/Max/Average	Yes
dB/dBm	Yes
Limit test	Yes
<b>Remote control</b>	
Interface	USB 2.0 (TMC-488.2)
Programming language	SCPI, IEEE-488.1, IEEE-488.2
Software	Intuilink, Agilent IO Library Suite
Drivers	LabVIEW <sup>®</sup> , IVI-COM
<b>General</b>	
Weight	3.75 kg
Size x 303.2 mm	103.8 mm x 261.1 mm
Safety	Certified by CSA for IEC/EN/CSA/UL 61010-1 2nd Edition CAT I 1000 V, CAT II 300 V
Warranty	One year

## Standard Shipped Components

- Test lead kit
- Power cord
- Quick Start Guide
- Product Reference CD-ROM
- Test report
- USB interface cable
- User's and Service Guide
- Agilent IO Library Suite CD-ROM

## Optional Accessories



34132A Deluxe Test Lead Kits



34133A Precision Electronics Test Leads



E2308A Thermistor Probe



34330A 30A Current Shunt



## Measurement Automation— Quick and Easy

Whatever instrument you're programming—a power supply, power meter or data acquisition device, whether distributed or local—Agilent VEE graphical language software and I/O hardware provide you the ease and flexibility to set up and automate the way you want for your application need. Make measurements quickly, easily—and affordably—today.

### Measurement automation program in Agilent VEE and Agilent I/O hardware



### Instruments



[www.agilent.com/find/34405A](http://www.agilent.com/find/34405A)

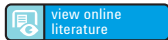


[www.agilent.com/find/quotation](http://www.agilent.com/find/quotation)

Select your instrument and click a button. A formal quotation will be delivered to your email address in 2 minutes.



[www.agilent.com/find/34405A\\_demo](http://www.agilent.com/find/34405A_demo)



[www.agilent.com/find/34405A](http://www.agilent.com/find/34405A)

View the datasheet (Publication number: 5989-4906EN).



### Agilent Email Updates

[www.agilent.com/find/emailupdates](http://www.agilent.com/find/emailupdates)  
Get the latest information on the products and applications you select.



### Agilent Direct

[www.agilent.com/find/agilentdirect](http://www.agilent.com/find/agilentdirect)  
Quickly choose and use your test equipment solutions with confidence.



[www.agilent.com/find/open](http://www.agilent.com/find/open)  
Agilent Open simplifies the process of connecting and programming test systems to help engineers design, validate and manufacture electronic products. Agilent offers open connectivity for a broad range of system-ready instruments, open industry software, PC-standard I/O and global support, which are combined to more easily integrate test system development.



[www.lxistandard.org](http://www.lxistandard.org)  
LXI is the LAN-based successor to GPIB, providing faster, more efficient connectivity. Agilent is a founding member of the LXI consortium

## Remove all doubt

Our repair and calibration services will get your equipment back to you, performing like new, when promised. You will get full value out of your Agilent equipment throughout its lifetime. Your equipment will be serviced by Agilent-trained technicians using the latest factory calibration procedures, automated repair diagnostics and genuine parts. You will always have the utmost confidence in your measurements.

Agilent offers a wide range of additional expert test and measurement services for your equipment, including initial start-up assistance onsite education and training, as well as design, system integration, and project management.

For more information on repair and calibration services, go to

[www.agilent.com/find/removealldoubt](http://www.agilent.com/find/removealldoubt)

## www.agilent.com

For more information on Agilent Technologies' products, applications or services, please contact your local Agilent office. The complete list is available at:

[www.agilent.com/find/contactus](http://www.agilent.com/find/contactus)

### Phone or Fax Americas

Canada	(877) 894-4414
Latin America	305 269 7500
United States	(800) 829-4444

### Asia Pacific

Australia	1 800 629 485
China	800 810 0189
Hong Kong	800 938 693
India	1 800 112 929
Japan	81 426 56 7832
Korea	080 769 0800
Malaysia	1 800 888 848
Singapore	1 800 375 8100
Taiwan	0800 047 866
Thailand	1 800 226 008

### Europe

Austria	0820 87 44 11
Belgium	32 (0) 2 404 93 40
Denmark	45 70 13 15 15
Finland	358 (0) 10 855 2100
France	0825 010 700
Germany	01805 24 6333* *0.14€/minute
Ireland	1890 924 204
Italy	39 02 92 60 8484
Netherlands	31 (0) 20 547 2111
Spain	34 (91) 631 3300
Sweden	0200-88 22 55
Switzerland (French)	44 (21) 8113811(Opt2)
Switzerland (German)	0800 80 53 53 (Opt 1)
United Kingdom	44 (0) 7004 666666

Other European Countries:

[www.agilent.com/find/contactus](http://www.agilent.com/find/contactus)

Revised: March 23, 2007

Product specifications and descriptions in this document subject to change without notice.

© Agilent Technologies, Inc. 2007  
Printed in USA, November 7, 2007  
5989-5905EN



Agilent Technologies